

# INSTALLATION MANUAL

## 4055102

### Level of Difficulty

Easy

### Parts List

1	Driver / left running board*
1	Passenger / right running board*
6	VersaTrac™ mounting bracket, universal
2	VersaTrac™ mounting bracket, passenger / right, front, upper
2	VersaTrac™ mounting bracket, passenger / right, front, lower
14	Clip nut, M8*
30	Hex bolt, M8 - 1.25 x 25mm (B)
30	Lock washer, M8 (B)
30	Flat washer, M8 (B)
16	Hex nut, M8 (B)
2	Hex bolt, M10 - 1.50 x 30mm (B)
2	Lock washer, M10
2	Flat washer, M10

(B) = Black hardware

\*Running boards sold separately

### Tools Required

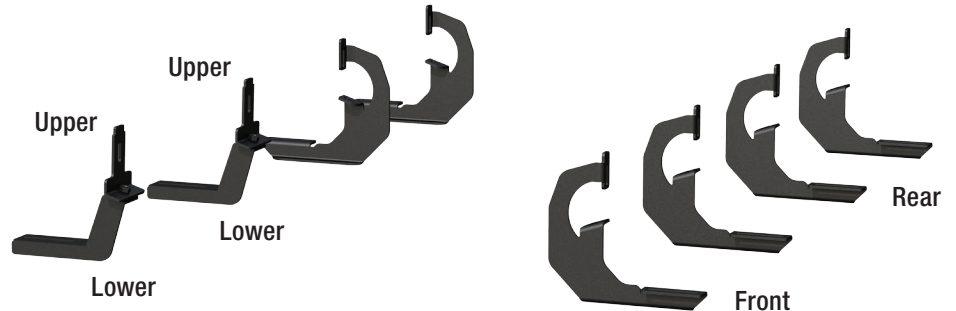
Ratchet	Socket set
Torque wrench	Socket extension
Level	

### Torque Specifications

	Metric	SAE
	M6 bolt	3 ft.-lbs.
	M8 bolt	7 ft.-lbs.
	M10 bolt	16 ft.-lbs.
	M12 bolt	28 ft.-lbs.
	1/4" bolt	3 ft.-lbs.
	5/16" bolt	7 ft.-lbs.
	3/8" bolt	16 ft.-lbs.
	7/16" bolt	20 ft.-lbs.
	1/2" bolt	28 ft.-lbs.

Use above torque setting unless otherwise noted

### Product Photo



### SlimGrip™ (not included)



### Notes and Maintenance

Before you begin installation, read all instructions thoroughly.

Proper tools will improve the quality of installation and reduce the time required.

To protect the product, wax after installing. Regular waxing is recommended to add a protective layer over the finish. Do not use any type of polish or wax that may contain abrasives that could damage the finish.

For polished, gloss and other smooth finishes, polish may be used to clear small scratches and scuffs on the finish.

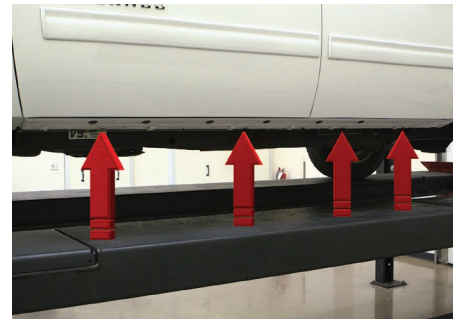
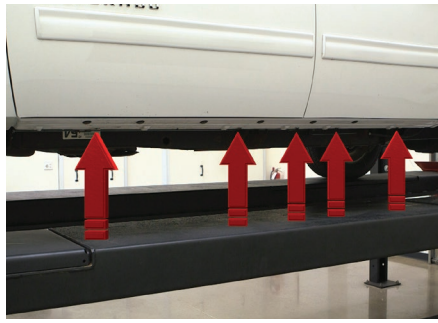
Mild automotive detergent may be used to clean the product. Do not use dish detergent, abrasive cleaners, abrasive pads, wire brushes or other similar products that may damage the finish.

Refer to the table to the left when securing hardware during the installation process to help prevent damage to the product or vehicle.

### Step 1

Starting on the driver side, locate the five mounting tabs along the bottom edge of the vehicle body.

This installation will use the first, second, fourth and fifth mounting tabs.



### Step 2

Starting at the front driver-side mounting location, locate the threaded hole on the inside of the body panel.

Attach the bracket to the body panel using an M8 hex bolt, lock washer and flat washer.

Snug the hardware, but do not fully tighten.



### Step 3

Secure the bracket with a second M8 hex bolt, lock washer and flat washer, using the factory-threaded nut on the edge of the body panel.

Snug the hardware, but do not fully tighten.



### Step 4

Repeat steps 2 and 3 to install the second bracket over the second mounting tab location from step 1.



### Step 5

Locate the fourth and fifth tab locations from step 1.

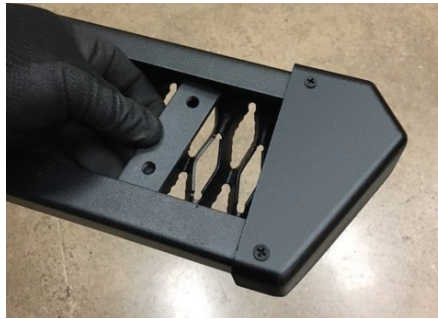
Insert a clip nut through the access hole and align it over the adjacent smaller hole. Insert a second clip nut over the lower mounting tab.

Secure the bracket to the vehicle with an M8 hex bolt, lock washer and flat washer in each mounting location.



### Step 6

Slide the four track mounting brackets into the bottom side of the SlimGrip™ board.



### Step 7

Carefully place the running board onto the mounting brackets.

Align the track mounting brackets with the mounting brackets on the vehicle.



### Step 8

Attach the track mounting brackets to the mounting brackets using black M8 hex bolts, hex nuts, lock washers and flat washers.





### Step 9

At this time, adjust the running board to the desired location.

With the running board in position, it is recommended to tighten all brackets to the vehicle first, followed by the running board connections.

For recommended torque specifications, refer to the table on page one.



### Step 10

Locate the front mounting point on the passenger side of the vehicle to install the front two passenger mounting brackets.

Place the upper mounting bracket against the rocker panel. Align the weld nut on the upper mounting bracket with the mounting hole in the rocker panel.

Align one of the passenger front lower mounting brackets with the upper mounting bracket. Secure the two mounting brackets together using an M10 hex bolt, lock washer and flat washer.

Torque all M10 hardware to 31.6 ft-lbs.

Repeat this process to install the second passenger mounting bracket. Secure the top mounting bracket to the rocker panel using an M8 hex bolt, lock washer and flat washer.

Snug the hardware, but do not fully tighten.



### Step 11

Repeat step 5 on the passenger side of the vehicle to install the two rear mounting brackets.

Repeat steps 6 through 9 on the passenger side of the vehicle to install the running boards.

Congratulations on the installation of your new SlimGrip™ running boards.

With the running boards installed, periodic inspections should be performed to ensure all mounting hardware remains tight.

To protect your investment, see the 'Notes and Maintenance' section on the first page of this instruction manual.

