

INSTALLATION MANUAL

416088

Level of Difficulty

Easy

This is the second of two manuals required to complete this installation. The first manual is included with your mounting brackets.

Parts List

1	Driver / left SlimGrip™ running board
1	Passenger / right SlimGrip™ running board
2	Right end cap
2	Left end cap
8	Self-piercing phillips screw
8	Mounting plate
16	Hex bolt, M8
16	Flat washer, M8
16	Serrated flange nut, M8

Attachment hardware is supplied with the mounting brackets. Hardware quantities will vary depending on the vehicle application.

Tools Required

Ratchet set	Torque wrench
-------------	---------------

Torque Specifications

Metric	M6 bolt	3 ft-lbs.
	M8 bolt	7 ft-lbs.
	M10 bolt	16 ft-lbs.
	M12 bolt	28 ft-lbs.
SAE	1/4" bolt	3 ft-lbs.
	5/16" bolt	7 ft-lbs.
	3/8" bolt	16 ft-lbs.
	7/16" bolt	20 ft-lbs.
	1/2" bolt	28 ft-lbs.

Use above torque setting unless otherwise noted

Product Photo

Notes and Maintenance

Before you begin installation, read all instructions thoroughly.

Proper tools will improve the quality of installation and reduce the time required.

To protect the product, wax after installing. Regular waxing is recommended to add a protective layer over the finish. Do not use any type of polish or wax that may contain abrasives that could damage the finish.

For polished, gloss and other smooth finishes, polish may be used to clear small scratches and scuffs on the finish.

Mild automotive detergent may be used to clean the product. Do not use dish detergent, abrasive cleaners, abrasive pads, wire brushes or other similar products that may damage the finish.

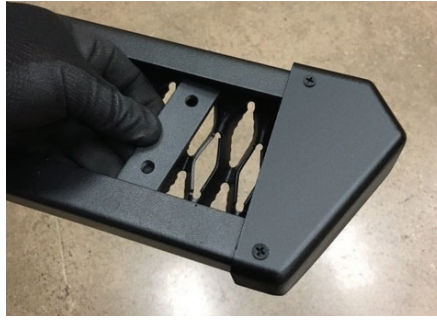
Refer to the table to the left when securing hardware during the installation process to help prevent damage to the product or vehicle.

Step 1

Secure the end caps using self-piercing screws.

Slide the provided track mounting plates into the bottom of the SlimGrip™ board.

Note: The number of mounting brackets may vary based on application. Use one mounting plate per bracket.



Step 2

Carefully place the running board onto the mounting brackets.

Align the track mounting plates with the mounting brackets on the vehicle.



Step 3

Attach the track mounting plates to the mounting brackets using two black M8 hex bolts, hex nuts, lock washers and flat washers per bracket. Repeat for the remaining mounting brackets.

At this time, adjust the running board to the desired location.

With the running board in position, it is recommended to tighten all brackets to the vehicle first, followed by the running board connections.

For recommended torque specifications, refer to the table on page 1.



Step 4

Repeat steps 1 through 4 on the passenger side of the vehicle.

Congratulations on the installation of your new SlimGrip™ running boards.

With the running boards installed, periodic inspections should be performed to ensure all mounting hardware remains tight.

To protect your investment, see the 'Notes and Maintenance' section on the first page of this instruction manual.



Representative Image

INSTALLATION MANUAL

4055101

Level of Difficulty

Easy

This is the first of two manuals required to complete this installation. The second manual is included with your running boards / side steps.

Parts List

8	VersaTrac™ mounting bracket, universal
16	Clip nut, M8*
32	Hex bolt, M8 - 1.25 x 25mm
32	Lock washer, M8
32	Flat washer, M8
16	Hex nut, M8

* Depending on the year of the vehicle, clip nuts may or may not be needed.

Running boards / side steps sold separately

Tools Required

Ratchet	Socket set
Torque wrench	Socket extension
Level	--

Torque Specifications

Metric	M6 bolt	3 ft-lbs.
	M8 bolt	7 ft-lbs.
	M10 bolt	16 ft-lbs.
	M12 bolt	28 ft-lbs.
	1/4" bolt	3 ft-lbs.
SAE	5/16" bolt	7 ft-lbs.
	3/8" bolt	16 ft-lbs.
	7/16" bolt	20 ft-lbs.
	1" bolt	20 ft-lbs.
	1 1/2" bolt	28 ft-lbs.

Use above torque setting unless otherwise noted

Product Photo

Notes and Maintenance

Before you begin installation, read all instructions thoroughly.

Proper tools will improve the quality of installation and reduce the time required.

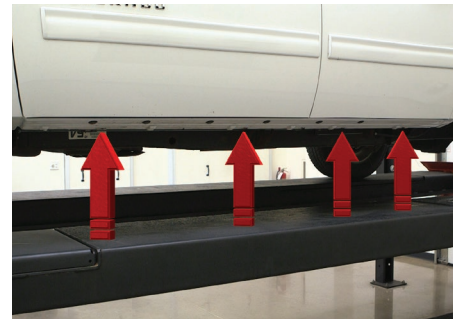
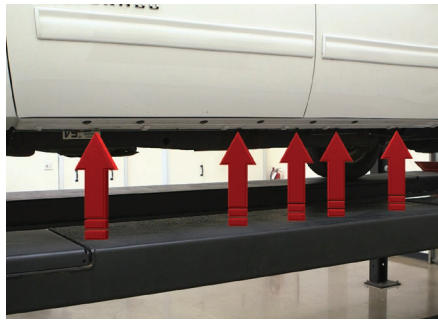
Mild automotive detergent may be used to clean the product. Do not use dish detergent, abrasive cleaners, abrasive pads, wire brushes or other similar products that may damage the finish.

Refer to the table to the left when securing hardware during the installation process to help prevent damage to the product or vehicle.

Step 1

Starting on the driver side, locate the five mounting tabs along the bottom edge of the vehicle body.

This installation will use the first, second, fourth and fifth mounting tabs.



Step 2

Starting at the front driver-side mounting location, locate the threaded hole on the inside of the body panel.

Attach the bracket to the body panel using an M8 hex bolt, lock washer and flat washer.

Snug the hardware, but do not fully tighten.

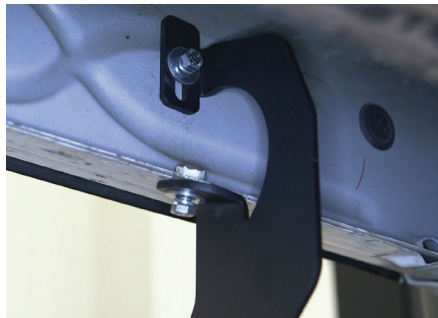


Step 3

Secure the bracket with a second M8 hex bolt, lock washer and flat washer, using the factory-threaded nut on the edge of the body panel.

Snug the hardware, but do not fully tighten.

Repeat steps 2 and 3 to install the second bracket over the second mounting tab location from step 1.



Step 4

Locate the fourth and fifth mounting tabs from step 1.

Insert a clip nut through the access hole and align it over the adjacent smaller hole. Insert a second clip nut over the lower mounting tab.

Secure the bracket to the vehicle with an M8 hex bolt, lock washer and flat washer in each mounting location.

Repeat steps 1 through 4 on the passenger side of the vehicle.

Note: To complete the installation, refer to the manual included with your running boards / side steps.

