

INSTALLATION MANUAL

4055111

Level of Difficulty

Easy

Parts List

1	Driver / left running board*
1	Passenger / right running board*
4	VersaTrac™ mounting bracket, universal
1	VersaTrac™ mounting bracket, driver side, front
1	VersaTrac™ mounting bracket, passenger side, rear
12	Hex bolt, M8 (S)
12	Flat washer, M8 (S)
12	Lock washer, M8 (S)
12	Hex bolt, M8 (B)
12	Flat washer, M8 (B)
12	Lock washer, M8 (B)
12	Hex nut, M8 (B)
6	Hex bolt, M10
6	Flat washer, M10
6	Lock washer, M10
6	Flat washer, M12
6	Lock washer, M12
6	Hex nut, M12
6	T-bolt, M12 tab
6	Plastic bolt retainer
1	Spacer plate

(S) = Silver hardware

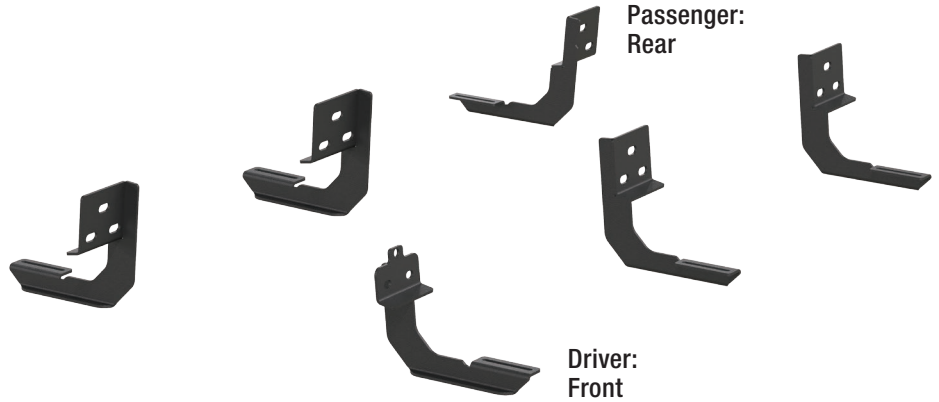
(B) = Black hardware

*Running boards sold separately

Tools Required

Ratchet	Socket set
Torque wrench	Level
Utility knife	

Product Photo



SlimGrip™ (not included)



Notes and Maintenance

Before you begin installation, read all instructions thoroughly.

Proper tools will improve the quality of installation and reduce the time required.

To protect the product, wax after installing. Regular waxing is recommended to add a protective layer over the finish. Do not use any type of polish or wax that may contain abrasives that could damage the finish.

For polished, gloss and other smooth finishes, polish may be used to clear small scratches and scuffs on the finish.

Mild automotive detergent may be used to clean the product. Do not use dish detergent, abrasive cleaners, abrasive pads, wire brushes or other similar products that may damage the finish.

Refer to the table to the left when securing hardware during the installation process to help prevent damage to the product or vehicle.

Torque Specifications

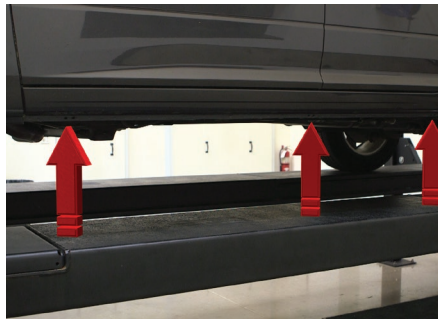
Metric			SAE		
	M6 bolt	3 ft.-lbs.		1/4" bolt	3 ft.-lbs.
M8 bolt	7 ft.-lbs.	5/16" bolt	7 ft.-lbs.		
M10 bolt	16 ft.-lbs.	3/8" bolt	16 ft.-lbs.		
M12 bolt	28 ft.-lbs.	7/16" bolt	20 ft.-lbs.		
--	--	1/2" bolt	28 ft.-lbs.		

Use above torque setting unless otherwise noted

Step 1

Starting on the driver side, locate the three mounting tabs along the bottom edge of the vehicle body.

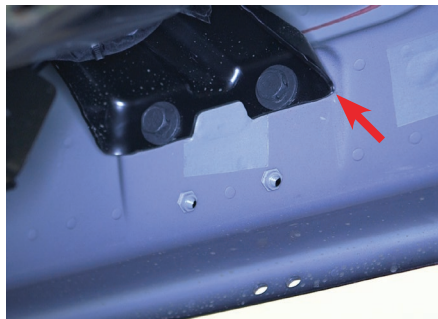
Locate the front mounting point.



Step 2

Using a utility knife, cut and remove the tape plug covering the third mounting point for the front mounting bracket.

Note: If vehicle is 2009 - 2015, there may not be a support bracket (indicated by the red arrow) at this location. In this case, use the provided spacer plate between the driver-side front mounting bracket and the rocker panel.



Step 3

Insert an M12 T-bolt plate into the opening. Slide a plastic bolt retainer over the thread of the bolt to hold the bolt in place.

Place the front driver-side bracket onto the vehicle and secure the top portion with an M12 lock washer, flat washer and hex nut.

Snug the hardware, but do not fully tighten.



Step 4

Finish securing the front mounting bracket to the vehicle by inserting two silver M8 hex bolts, lock washers, and flat washers into the bottom holes of the mounting bracket.

Note: On vehicles not equipped with M8 threaded inserts, align the M10 nut on the M12 T-bolt plate with either hole location on the bracket. Secure using an M10 hex bolt, lock washer and flat washer.



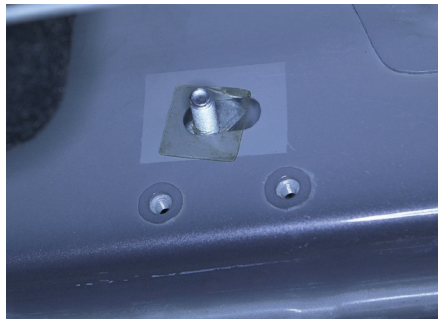
Step 5

Locate the middle mounting location and one of the universal mounting brackets.

Insert an M12 T-bolt plate into the top mounting position. Slide a plastic bolt retainer over the thread of the bolt to hold the bolt in place. Place the mounting bracket over the stud and secure with an M12 flat washer, lock washer and hex nut.

Secure the bottom of the bracket with two silver M8 hex bolts, lock washers and flat washers. Snug the hardware, but do not fully tighten.

Note: On vehicles not equipped with M8 threaded inserts, align the M10 nut on the M12 T-bolt plate with either hole location on the bottom of the bracket. Secure using an M10 hex bolt, lock washer and flat washer.



Step 6

Locate the rear mounting location and repeat step 5 to secure one of the remaining universal brackets to the rear location on the driver side.



Step 7

Repeat step 5 for the front, middle and rear mounting locations on the passenger side. The front and middle locations will use universal brackets.

Note: The rear passenger-side bracket is not universal and is identified with a notch cut into the back of the bracket as shown.



Step 8

Slide the three track mounting brackets into the bottom side of the SlimGrip™ board.



Step 9

Carefully place the running board onto the mounting brackets.

Align the track mounting brackets with the mounting brackets on the vehicle.



Step 10

Attach the track mounting brackets to the mounting brackets on the vehicle using black M8 hex bolts, hex nuts, lock washers and flat washers.



Step 11

At this time, adjust the running board to the desired location.

With the running board in position, it is recommended to tighten all brackets to the vehicle first, followed by the running board connections.

For recommended torque specifications, refer to the table on page one.



Step 12

Repeat steps 8 through 11 to install the running board to the brackets on the passenger side of the vehicle.

Congratulations on the installation of your new SlimGrip™ running boards.

With the running boards installed, periodic inspections should be performed to ensure all mounting hardware remains tight.

To protect your investment, see the 'Notes and Maintenance' section on the first page of this instruction manual.

