

This is the second of two manuals required to complete this installation. The first manual is included with your mounting brackets.

## Level of Difficulty

Easy

## Parts List

4	Hex bolt, 1/2"
4	Lock nut, 1/2"
8	Flat washer, 1/2"
1	Bumper assembly

## Tools Required

Ratchet	Torque wrench
Socket set	Wrench set
Socket extension	--

## Torque Specifications

1/2" bolt	70 ft-lbs.
-----------	------------

Use above torque setting unless otherwise noted

## Product Photo



## NOTICE

Before you begin installation, read all instructions thoroughly.

Proper tools will improve the quality of installation and reduce the time required.

To help prevent damage to the product or vehicle, refer to the specified torque specifications when securing hardware during the installation process.

## Maintenance

To protect the product, wax after installing. Regular waxing is recommended to add a protective layer over the finish. Do not use any type of polish or wax that may contain abrasives that could damage the finish.

For polished, gloss and other smooth finishes, polish may be used to clear small scratches and scuffs on the finish.

Mild automotive detergent may be used to clean the product. Do not use dish detergent, abrasive cleaners, abrasive pads, wire brushes or other similar products that may damage the finish.

## Step 1

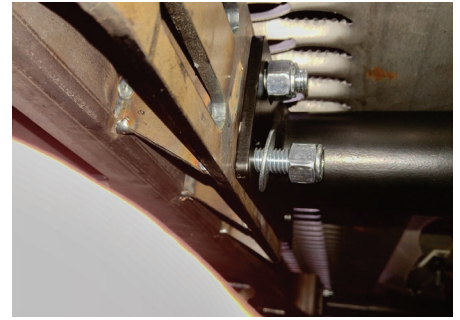
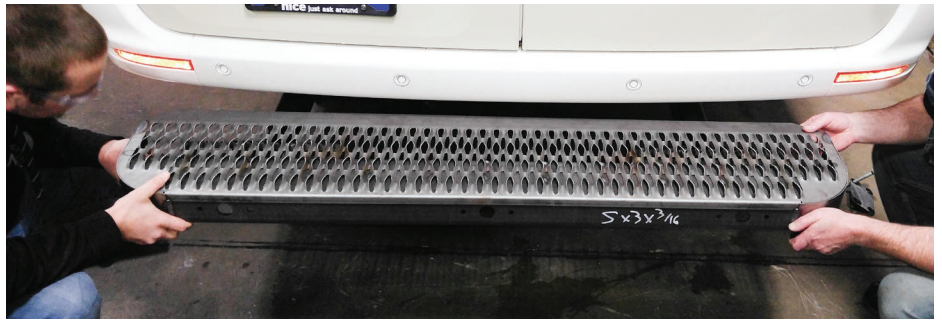
With assistance, line up the slots in the brackets of the impact bumper assembly to the slots in the vehicle brackets. Secure the step assembly to the vehicle bracket with the 1/2" hardware.

Adjust the step so that it is centered and level. Tighten all hardware to the recommended torque specifications listed on page one.

Congratulations on the installation of your new impact bumper step.

With the bumper installed, periodic inspections should be performed to ensure all mounting hardware remains tight.

To protect your investment, see the /Notes and Maintenance/ section on the first page of this instruction manual.



# INSTALLATION MANUAL

# 571500

This is the first of two manuals required to complete this installation. The second manual is included with your Impact™ rear bumper guard.

## Level of Difficulty

Easy

Installation difficulty levels are based on time and effort involved and may vary depending on the installer level of expertise, condition of the vehicle and proper tools and equipment.

## Parts List

Qty	Description
2	Mounting bracket
8	Hex bolt, M12
8	Lock nut, M12
16	Flat washer, M12

## Tools Required

Ratchet	Socket set
Torque wrench	Wrench set
Socket extension	--

## Torque Specifications

M12 bolt	100 ft-lbs.
Use above torque setting unless otherwise noted	

## Product Photo



## NOTICE

Visit [www.luvernetruck.com](http://www.luvernetruck.com) for a full-color copy of this instruction manual, as well as helpful videos, guides and much more!

Before you begin installation, read all instructions thoroughly.

Proper tools will improve the quality of installation and reduce the time required.

Shock assemblies need to be greased before use. Inspect and grease shock assemblies periodically to ensure smooth and quiet operation.

Periodic inspection of your product should be performed to ensure all hardware and / or components remain secure.

To help prevent damage to the product or vehicle, refer to the specified torque specifications when securing hardware during the installation process.

## Maintenance

Mild automotive detergent may be used to clean the product. Do not use dish detergent, abrasive cleaners, abrasive pads, wire brushes or other similar products that may damage the finish.

### Step 1

**Note:** Impact bumper is not compatible with the OEM receiver hitch or accessory rear bumper step. If installing on a van equipped with either of these options they must be removed at this time.

On the driver side of the vehicle, locate the four horizontal holes at the rear of the vehicle frame. Using four M12 bolts, flat washers and lock nuts attach the bracket to the outside of the frame.

Snug the hardware, but do not fully tighten.



### Step 2

On the passenger side of the vehicle, locate the four horizontal holes at the rear of the vehicle frame. Using four M12 bolts, flat washers and lock nuts, attach the bracket to the inside of the frame.

Snug the hardware, but do not fully tighten.



### Step 3

Tighten all hardware to the recommended torque specifications listed on page 1.

Use the instructions and hardware provided with your Impact™ rear bumper guard to attach the bumper to the brackets.

#### **NOTICE**

To complete the installation, refer to the manual included with your Impact™ rear bumper guard.

