

Level of Difficulty

Easy

Parts List

| | |
|---|---|
| 1 | Driver / left side upright |
| 1 | Passenger / right side upright |
| 1 | Driver / left side mounting bracket |
| 1 | Passenger / right side mounting bracket |
| 4 | Hex bolt, 7/16" |
| 4 | Flat washer, 7/16" |
| 4 | Flat washer, 1/2" |
| 4 | Lock washer, 1/2" |
| 4 | Cap nut, 1/2" |
| 4 | Carriage bolt, 1/2" |
| 2 | Hex bolt 1/2" - 13 x 1.5" |
| 2 | Hex bolt 1/2" - 13 x 4.5" |
| 2 | Serrated flange nut, 1/2" |

Tools Required

| | |
|------------|-------------------|
| Ratchet | Socket set |
| Wrench set | Socket extensions |

Torque Specifications

| | |
|------------|------------|
| 7/16" bolt | 30 ft-lbs. |
| 1/2" bolt | 50 ft-lbs. |

Use above torque setting unless otherwise noted

Product Photo



NOTICE

Before you begin installation, read all instructions thoroughly.

Proper tools will improve the quality of installation and reduce the time required.

To help prevent damage to the product or vehicle, refer to the specified torque specifications when securing hardware during the installation process.

Maintenance

To protect the product, wax after installing. Regular waxing is recommended to add a protective layer over the finish. Do not use any type of polish or wax that may contain abrasives that could damage the finish.

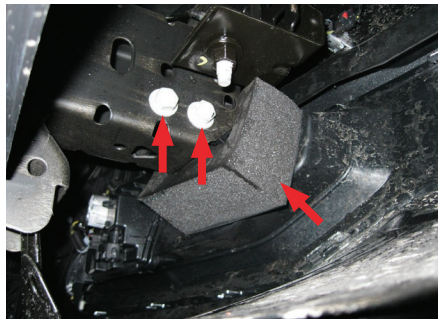
For polished, gloss and other smooth finishes, polish may be used to clear small scratches and scuffs on the finish.

Mild automotive detergent may be used to clean the product. Do not use dish detergent, abrasive cleaners, abrasive pads, wire brushes or other similar products that may damage the finish.

Step 1

Starting on the driver side of the vehicle, locate and remove the factory tow hook bolts. Remove the factory tow hooks and the foam spacer.

Repeat on the passenger side of the vehicle.

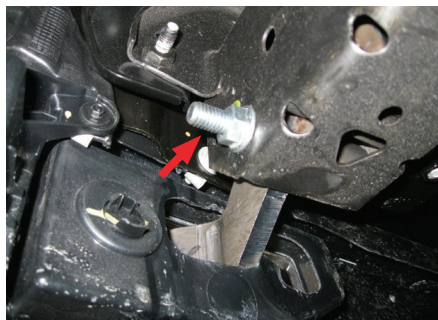
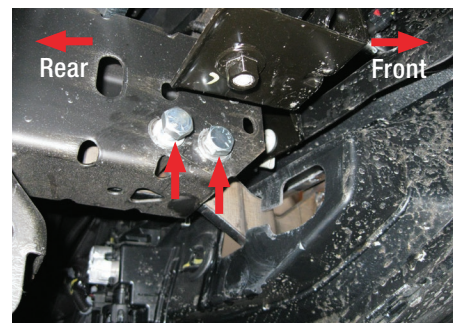


Step 2

Insert the mounting bracket through the tow hook opening. Secure the mounting bracket using a 1/2" - 13 x 4.5 hex bolt with the 1/2" serrated flange nut in the front hole and a 1/2" - 13 x 1.5 with 1/2" lock washer on the rear hole.

Snug the hardware, but do not fully tighten.

Repeat on the passenger side of the vehicle.



Step 3

Slide the upright over the mounting bracket and secure using 1/2" carriage bolts, washers and cap nuts.

Snug the hardware, but do not fully tighten.

Repeat on the passenger side of the vehicle.

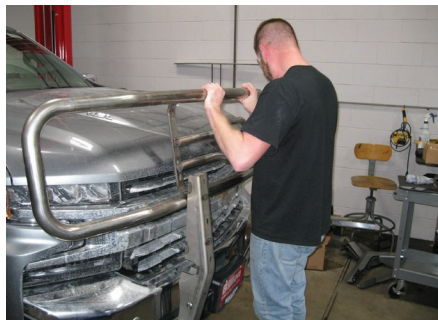
Note: The upright can be mounted in either the upper or lower location on the mounting bracket. It is recommended to use the lower location for Chevrolet applications and the upper location for GMC applications.



Step 4

Carefully lower the ring between the grille guard and the uprights. Secure the ring using four 7/16" hex bolts and flat washers.

Tighten the hardware to the recommended torque specifications listed in the table on page one.



Step 5

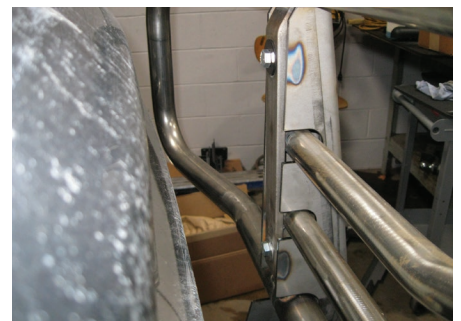
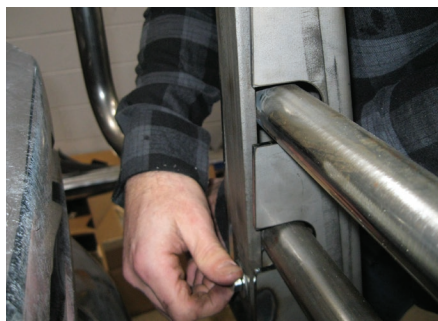
Tighten the vehicle mounting brackets to the recommended torque specifications listed in the table on page one.

Adjust the guard so that it is upright and level. Tighten the upright hardware to the recommended torque specifications listed in the table on page one.

Congratulations on the installation of your new LUVERNE 2" tubular grille guard.

With the grille guard installed, periodic inspections should be performed to ensure all mounting hardware remains tight.

To protect your investment, see the 'Notes and Maintenance' section on the first page of this installation manual.



Learn more about grille guards and bull bars we have.