

Installation Instructions

I - Sheet Number 10752 Rev.A
LUND Part#318096

LUND®

Running Board Bracket Kit

For proper installation and best possible fit, please read all instructions BEFORE you begin.

Important Safety Information



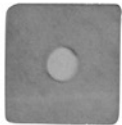
- To be used with Lund® branded products only.
- Do not stand on Lund running board or bracket while vehicle is in motion.
- Do not use the brackets as a jacking point for the vehicle.
- Do not use the bracket system or running boards to fasten cargo.
- Periodically check all components for tightness.
- Be sure to wear safety glasses while installing brackets.
- When using power tools, read and understand all operating instructions.

Contents

NOTE: Actual product may vary from illustration.



Bracket x4



Plastic Retainer x4



5/16 Flange Nut x8



6mm x 25mm Hex Bolt x8



6mm x 18mm OD Flat Washer x8



6mm x 22mm OD Flat Washer x8



6mm Nylon Lock Nut x8

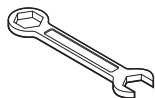


12mm Serrated Flange Nut x4

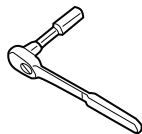


12mm x 40mm Bolt Plate x4

Tools Required



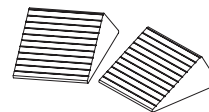
10mm Wrench



Ratchet and Extension



10mm - 13mm - 18mm Sockets



Wheel Chocks



Safety Glasses

Preparation Before Installation

- Park your vehicle in a clean, level location. Check to make sure the vehicle is in park, or for manual drive models, place the transmission in first gear. Engage the parking brake.
- Unpack the bracket kit and identify the parts according to the content descriptions.

Installation Steps

Starting at the driver side, locate the (3) pairs of factory holes in the pinch weld. (Fig. 1 and Fig. 2)

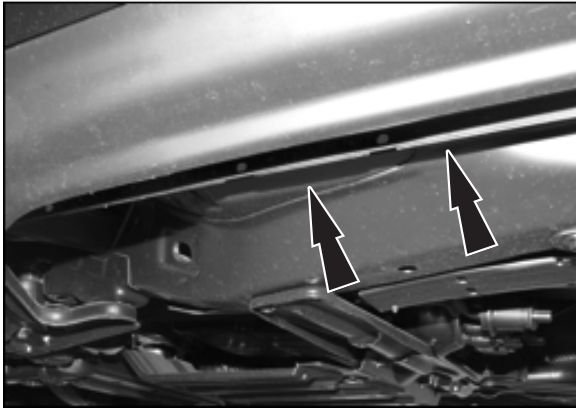


Fig. 1 Driver side front mounting location pictured.



Fig. 2 Driver side rear mounting location pictured.

1

Move toward the front pair. Remove the rubber plug filling the oval hole in the bottom of the rocker panel in front of the two holes. (Fig. 3)

Remove rubber plug

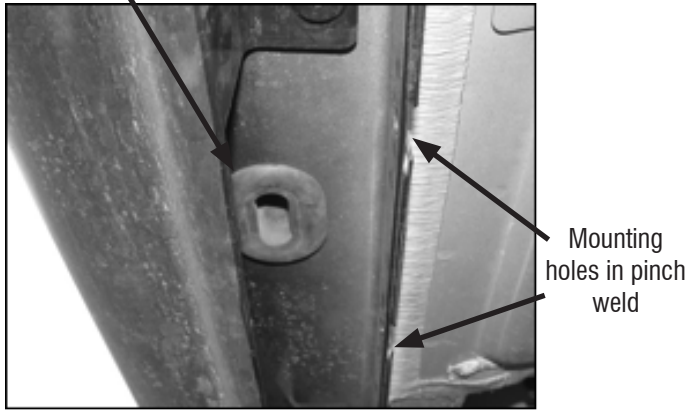


Fig. 3

2



Select (1) 12mm Bolt Plate and (1) 12mm Plastic Retainer. Partially thread the Retainer onto the Bolt Plate. Insert the Bolt Plate into the hole and rotate it 90-degrees to go across the slot. (Fig. 4)

(1) 12mm x 40mm Bolt Plate
(1) 12mm Plastic Retainer

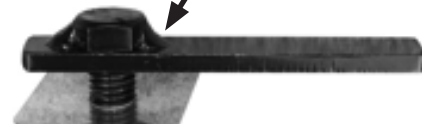


Fig. 4

3

Thread the retainer all the way down the Bolt Plate and tight against the body panel. (Fig. 5) **NOTE:** The Plastic Retainer is designed to prevent the Bolt Plate from falling into the body cavity and to aid in installing the Bracket.

After inserting, rotate Bolt Plate 90-degrees to go across the slot or until Bolt Plate stops.

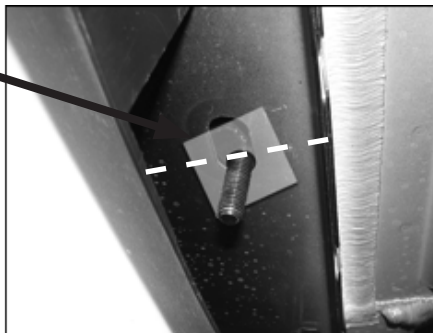


Fig. 5

4



Select (1) Mounting Bracket and secure it to the Bolt Plate with (1) 12mm Serrated Flange Nut. (Fig. 6) Do not tighten hardware at this time.

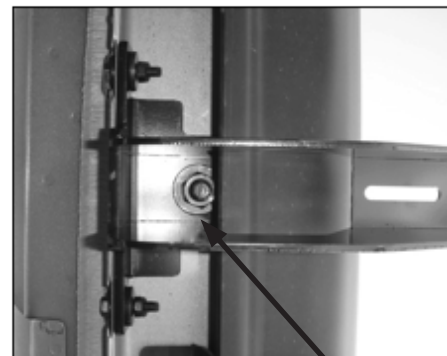


Fig. 6

(1) 12mm Flange Nut

5

Installation Steps



Line up the (2) small slots in the Bracket with the (2) holes in the pinch weld. Insert (1) 6mm x 25mm Hex Bolt and (1) 6mm x 18mm Flat Washer through the pinch weld and then the Bracket. Secure the bracket to the Hex Bolt with (1) 6mm x 22mm Large Flat Washer and (1) 6mm Nylon Lock Nut over the Bracket. (Fig. 6) Do Not tighten hardware at this time. Repeat for remaining mounting hole in Bracket and pinch weld. **NOTE:** Insert 6mm Hex Bolts with Flat Washers through the back of the pinch weld first, and then out through the Bracket.



6mm x 25mm Hex Bolts
6mm x 18mm Flat Washers



6mm x 22mm Flat Washers
6mm Nylon Lock Nuts

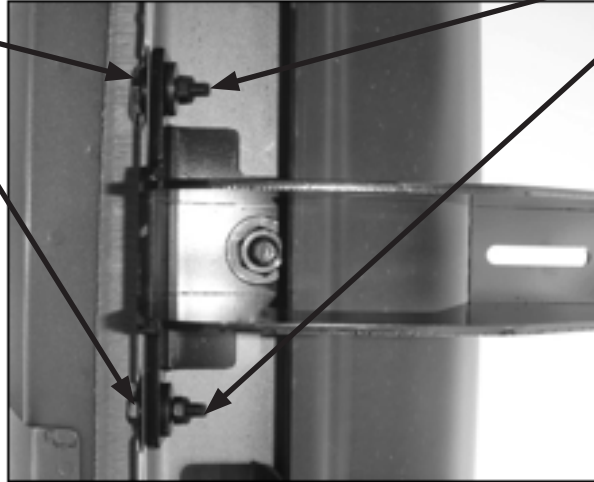


Fig. 6

6

NOTE: Insert 6mm Hex Bolts with Flat Washers through the back of the pinch weld first, and then out through the Bracket.
IMPORTANT: The passenger side of the vehicle may have a wiring harness attached behind the pinch weld, (Figure 7). Remove the hex nuts and drop the harness down before installing the Brackets, (Figure 8). 6mm Hex Bolts install from the inside first, then through the Bracket to clear the harness. Snug but do not fully tighten hardware at this time.



Fig. 7

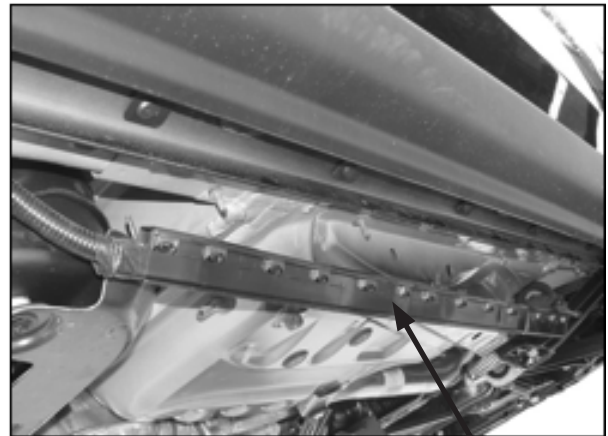


Fig. 8

Remove hex nuts from wiring harness. Drop harness down to install Brackets.

7

Installation Steps



Repeat **Steps 2 thru 5** to install the Rear Brackets.

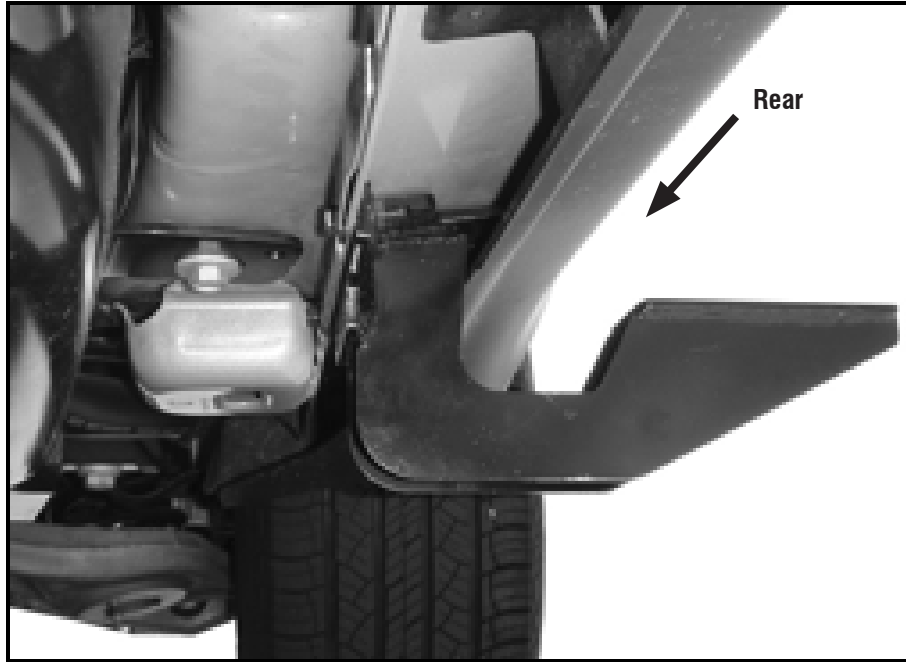


Fig. 9

8

Position the driver's side running board onto bracket and center on vehicle. Adjust Running Board to be parallel with side of vehicle. Install (4) 5/16" flange nuts (bolts are already installed on board).

Tighten all bracket hardware, position the board accordingly, and then tighten Running Board to brackets.

Repeat Steps 1 thru 8 for opposite side of vehicle.

NOTE: It may be necessary to lower the Brackets to insert the Running Board. Loosen hardware as necessary.



9

Fig. 10

Inspection After Installation

- Inspect all bolts and nuts for proper tightness.

Care and Cleaning

- Wash only with mild soap & dry with a clean cloth.
- Do not use cleaning solvents of any kind.

Congratulations!

You have purchased one of the many quality Lund[®] branded products offered by Lund International, Inc. We take the utmost pride in our products and want you to enjoy years of satisfaction from your investment. We have made every effort to ensure that your product is top quality in terms of fit, durability, finish and ease of installation.

LUND[®]

