

Installation Instructions

I - Sheet Number I-PW00847603 Rev. A

LUND[®]

Premium Style. Lasting Performance.

For proper installation and best possible fit, please read all instructions BEFORE you begin.

Care and Cleaning

- Wash only with mild soap & dry with a clean cloth.

- Every 3 months or 5000 miles check the cover tension and all components for tightness.

Congratulations!

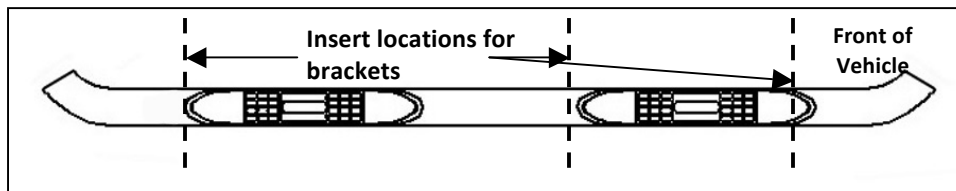
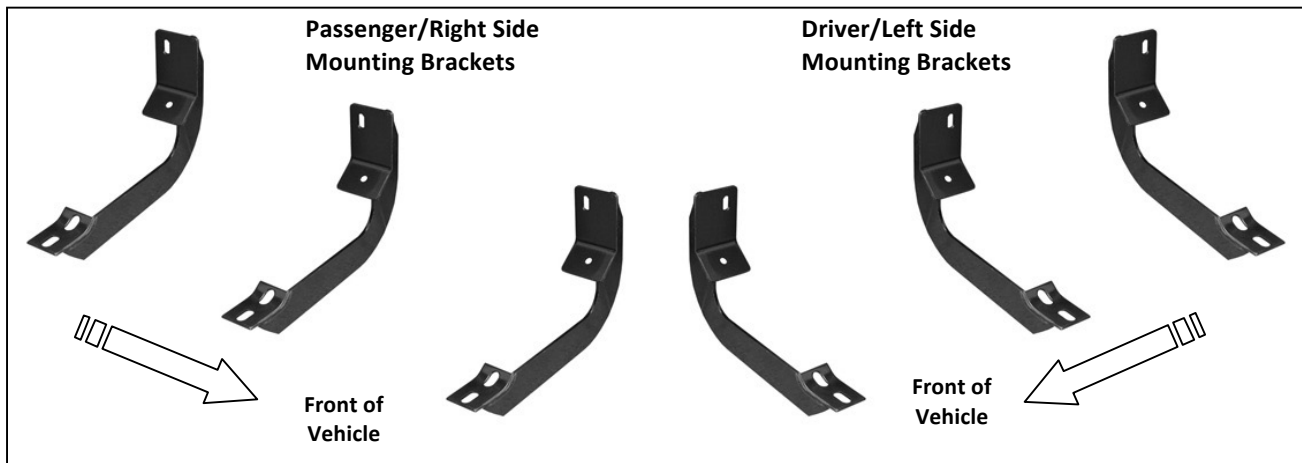
You have purchased one of the many quality Lund[®] branded products offered by Lund International, Inc. We take the utmost pride in our products and want you to enjoy years of satisfaction from your investment. We have made every effort to ensure that your product is top quality in terms of fit, durability, finish and ease of installation.

INSTALLATION INSTRUCTIONS

PART# 23886008/23786008

PARTS LIST:

1	Driver/Left Sidebar	12	8-1.25mm x 25mm Hex Bolts
1	Passenger/Right Sidebar	18	8mm Lock Washers
3	Driver/Left Mounting Brackets	18	8mm x 24mm OD x 2mm STD Flat Washers
3	Passenger/Right Mounting Brackets	6	8mm x 16mm OD x 1.6mm Small Flat Washers
6	8-1.25mm x 30mm Hex Bolts	6	8mm Nylon Lock Nuts

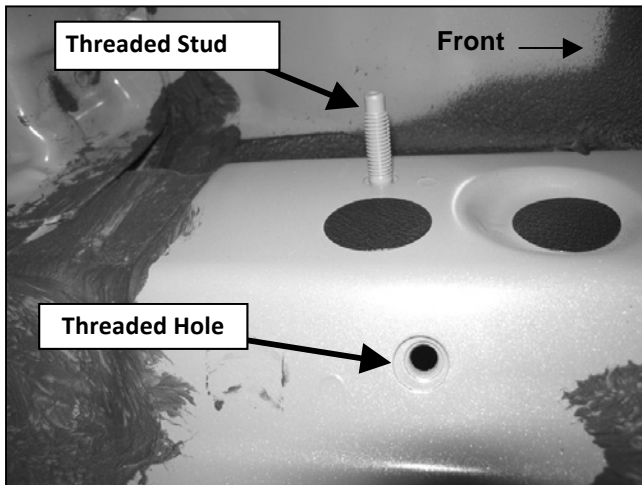


PROCEDURE:

1. REMOVE CONTENTS FROM BOX. VERIFY ALL PARTS ARE PRESENT. READ INSTRUCTIONS CAREFULLY BEFORE STARTING INSTALLATION.
2. Start installation at the front of the driver side of the vehicle and locate the factory threaded stud and the threaded hole located on the side of the inner body panel, **(Figure 1)**. **NOTE:** Remove the plastic plug or any insulation on the side panel to locate the threaded holes.
3. Select (1) driver side Mounting Bracket. Attach the Bracket to the threaded stud with (1) 8mm x 24mm STD Flat Washer and (1) 8mm Nylon Lock Nut. Next, insert (1) 8mm x 30mm Hex Bolt with (1) 8mm Lock Washer and (1) 8mm x 16mm Small Flat Washer through the remaining lower hole in the Bracket and into the threaded hole, **(Figure 2)**. Snug but do not tighten hardware at this time.
4. Repeat **Steps 2 – 3** to install the center and rear Mounting Brackets, **(Figures 2 – 4)**. **NOTE:** The cradles on the Mounting Brackets should be facing the rear of the vehicle when properly installed.
5. Once all three Mounting Brackets are partially installed, carefully place the driver Sidebar onto the Mounting Brackets. Use the included (6) 8mmx 25mm Hex Bolts, (6) 8mm Lock Washers and (6) 8mm x 24mm STD Flat Washers to bolt the Sidebar to Mounting Brackets, **(Figures 3 & 4)**.
6. Level and adjust the Sidebar and tighten all hardware at this time.
7. Repeat **Steps 2 – 6** for passenger Sidebar installation.
8. Do periodic inspections of the installation to make sure that all hardware is secure and tight.

To protect your investment, wax this product after installing. Regular waxing is recommended to add a protective layer over the finish. Do not use any type of polish or wax that may contain abrasives that could damage the finish.
For stainless steel: Aluminum polish may be used to polish small scratches and scuffs on the finish. Mild soap may be used also to clean the Sidebar.
For gloss black finishes: Mild soap may be used to clean the Sidebar.

Driver Side Installation Pictured



(Fig 1) Driver side rear mounting location pictured. Note: Remove plastic plugs to locate factory threaded holes

- 8mm x 30mm Hex Bolt
- 8mm Lock Washer
- 8mm x 16mm Small Flat Washer

- 8mm Nylon Lock Nut
- 8mm x 24mm STD Flat Washer

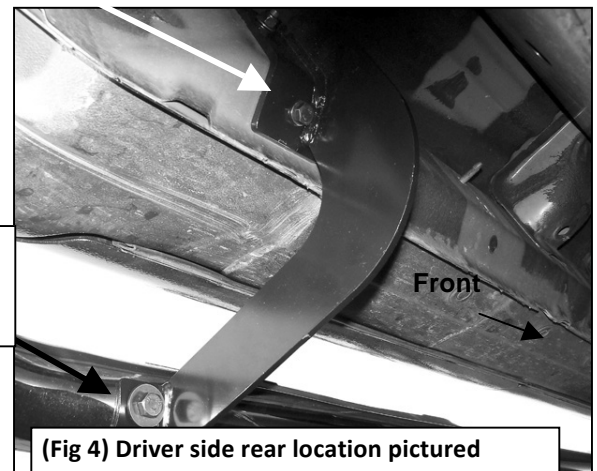


(Fig 2) Driver side front mounting location pictured



- 8mm x 30mm Hex Bolt
- 8mm Lock Washer
- 8mm x 16mm Small Flat Washer

(Fig 3) Driver side center mounting location pictured



(Fig 4) Driver side rear location pictured

- (2) 8mm x 25mm Hex Bolts
- (2) 8mm Lock Washers
- (2) 8mm x 24mm STD Flat Washers



Complete Installation