

# Installation Instructions

I - Sheet Number I-B117602 Rev. A

# **LUND**<sup>®</sup>

Premium Style. Lasting Performance.

For proper installation and best possible fit, please read all instructions BEFORE you begin.

## **Care and Cleaning**

- Wash only with mild soap & dry with a clean cloth.
  
- Every 3 months or 5000 miles check the cover tension and all components for tightness.

## **Congratulations!**

You have purchased one of the many quality Lund<sup>®</sup> branded products offered by Lund International, Inc. We take the utmost pride in our products and want you to enjoy years of satisfaction from your investment. We have made every effort to ensure that your product is top quality in terms of fit, durability, finish and ease of installation.

# Installation Instructions

Part # 23578176/23678176

## PARTS LIST:

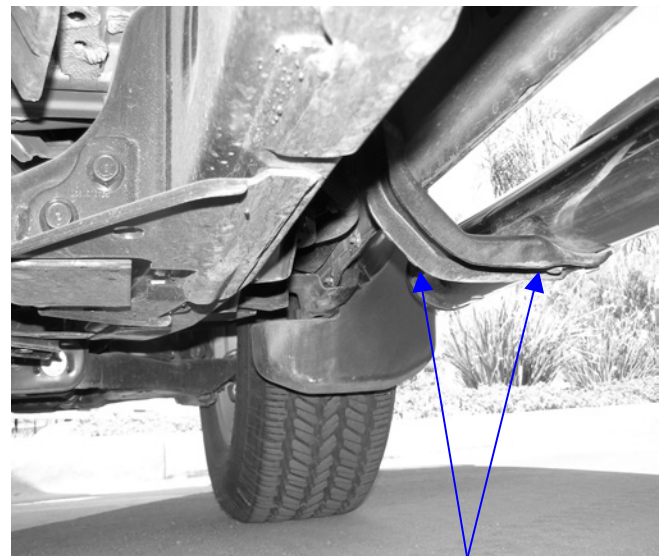
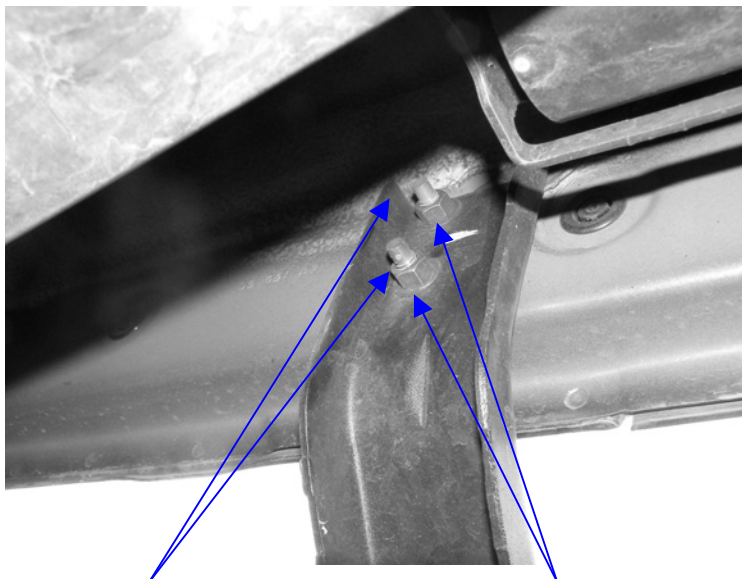
1	Passenger/Right <a href="#">Side Bar</a>	8	8-1.25mm x 30mm Hex Head Bolts
1	Driver/Left Side Bar	16	8X24mm OD.X2mm Flat Washers
1	Front Passenger/Right Side Mounting Bracket	16	8mm Lock Washers
1	Rear Passenger/Right Side Mounting Bracket	8	8-1.25mm Nuts
1	Front Driver/Left Side Mounting Bracket		
1	Rear Driver/Left Side Mounting Bracket		

## PROCEDURE:

- 1. REMOVE CONTENTS FROM BOX. VERIFY ALL PARTS ARE PRESENT. READ INSTRUCTIONS CAREFULLY.**
- On the passenger/right side, if equipped, remove the existing running board by removing the four nuts holding mount to inside of body. Install the two passenger/right side mounting brackets with the removed stock nuts, leave nuts loose for now. NOTE: Holes in brackets are off set, install with holes towards front of truck, passenger/right side shown. *See Fig. #1*
- If not equipped with factory running boards – then use the four supplied 8mm nuts, washers & lock washers to install mounting brackets to truck.
- Repeat procedures 2 & 3 for driver/left side.
- Install side bar onto mounting brackets using four 8X25mm hex head bolts, four 8mm lock washers & four 8mm flat washers. Leave bolts loose – short end whole pattern installs towards the front of truck, passenger/right side shown.
- Repeat procedure #5 on driver/left side.
- Level and adjust side bars as desired and tighten.
- Do periodic inspections to the installation to make sure that all hardware is secure and tight.

FIG. #1PASSENGER SIDE SHOWN

FIG. #2 PASSENGER SIDE SHOWN



EXISTING NUTS

**NOTE: If vehicle is not equipped with factory Sidebars use the included 8mm Hex Nuts**

OFF CENTER HOLES

SHORT END HOLE PATTERN