

Installation Instructions

I - Sheet Number LUNDRB02 Rev.B

LUND Running Boards

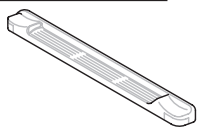
For proper installation and best possible fit, please read all instructions **BEFORE** you begin.

Important Safety Information



- CAUTION - Before driving, ensure that the Running Boards are properly anchored to vehicle.
- Do not use automatic "brush-style" car washes.
- Do not use cleaning solvents of any kind.
- Periodically check all components for tightness.

Contents NOTE: Actual product may vary from illustration. All hardware may not be used for every installation.



Running Boards



Front Brackets
2057-21 (2)



Middle/Rear
Brackets
2057-22 (6)



5/16"x18
Nylock Nuts (16)



5/16"x18
Washers (16)



5/16"x3/4"
Square Bolts (16)



#14x3/4"
Bolts (12)

Tools Required



Socket Set



Screwdriver

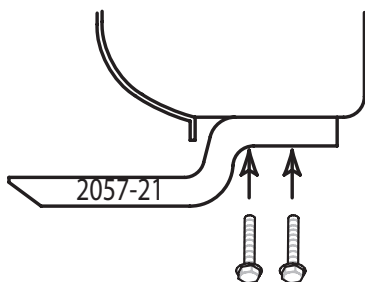
Preparation Before Painting/Installation

- A trial fit is recommended to ensure proper positioning and fit.
- Check fit of parts before painting as we will not accept the return of modified or painted parts.

Installation Steps NOTE: Actual application may vary slightly from illustrations.



Remove black plastic inserts using flathead screwdriver. Install Bracket 2057-21 on front of vehicle.

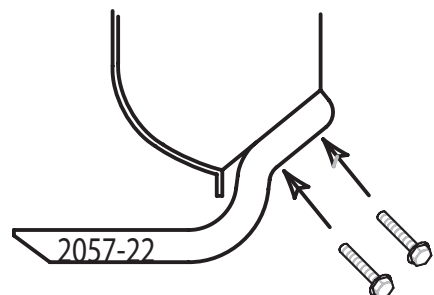


1

2057-21 = 1 Front Bracket per side.



Remove black plastic inserts using flathead screwdriver. Install Bracket 2057-22 on middle and rear of vehicle.

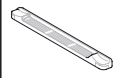


2

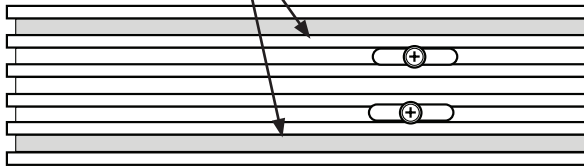
2057-22 = 2 Brackets per side.

Installation Steps

NOTE: Actual application may vary slightly from drawings.



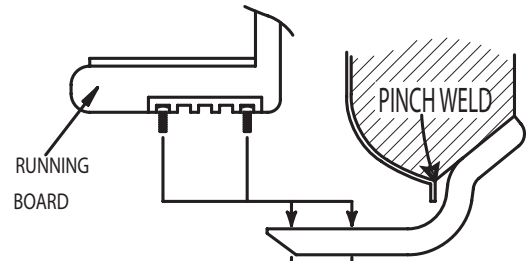
Install square bolts into the shaded outer channels. Three (3) per channel to attach boards to brackets.



3



Attach board to brackets with washers, and nylock nuts.



5/16"x18 Washer

5/16"x18 Nylock Nut

4

Care and Cleaning

- Wash only with mild soap & dry with a clean cloth.

Congratulations!

You have purchased one of the many quality Lund[®] branded products offered by Lund International, Inc. We take the utmost pride in our products and want you to enjoy years of satisfaction from your investment. We have made every effort to ensure that your product is top quality in terms of fit, durability, finish and ease of installation.

LUND[®]

