

Installation Instructions

LUND Interceptor™

Important Safety Information



- CAUTION - Before driving, ensure that the hood shield is properly secured to vehicle.
- Do not use automatic "brush-style" car washes.
- Do not use cleaning solvents of any kind.
- Periodically check all components for tightness.

Contents

NOTE: Actual product may vary from illustration.



Hood shield



Screw x4



Plastic Washer x4



Protective Film x2

Tools Required



Car Wash Supplies



Clean Towel



Phillips screwdriver

Preparation Before Painting / Installation

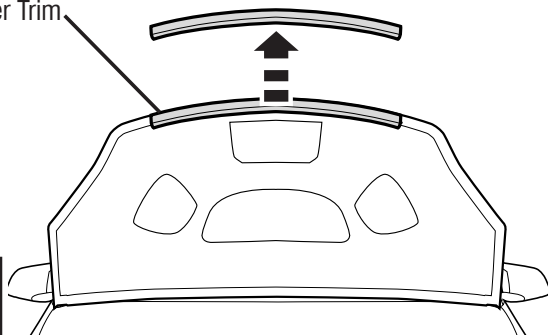
- A trial fit is recommended to ensure proper positioning and fit.
- Check fit of parts before painting as we will not accept the return of modified or painted parts.
- Wash and dry your vehicle to remove any debris and/or dirt from the installation area.

Installation Steps

NOTE: Actual application may vary slightly from illustrations.

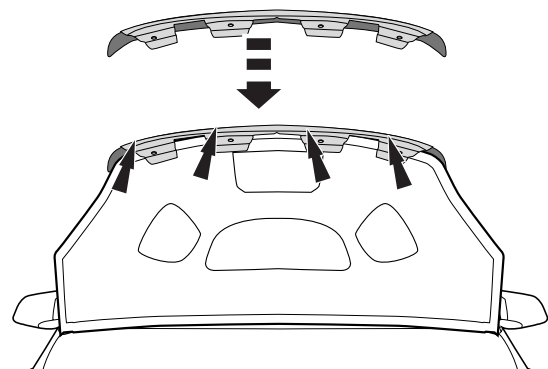
Open hood. Remove the rubber trim piece from the leading edge of hood. Discard rubber trim.

Rubber Trim



1

Align hood shield holes with holes in hood.



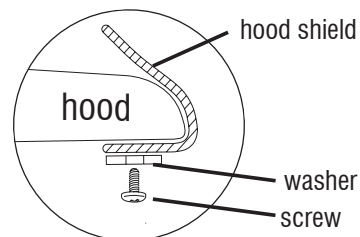
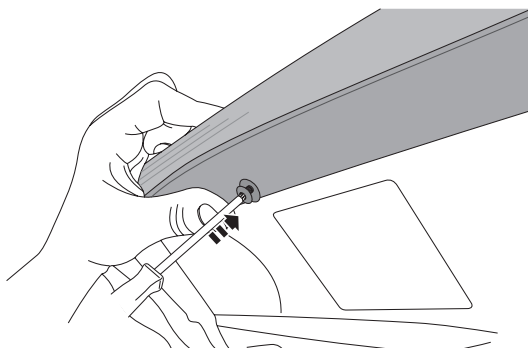
2

Installation Steps

NOTE: Actual application may vary slightly from illustrations.



Insert (1) screw with washer and screw until snug. Repeat for remaining (3) fasteners.

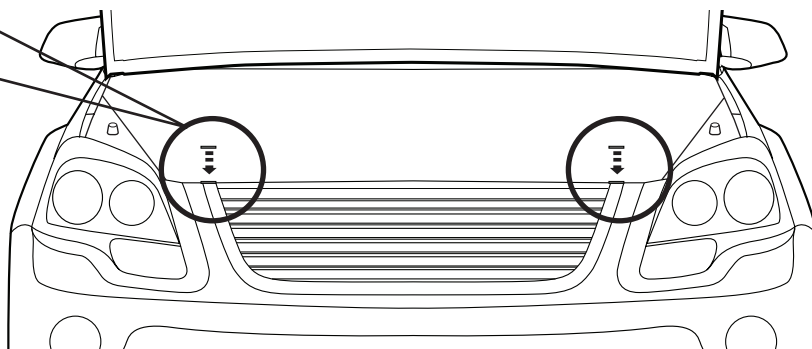
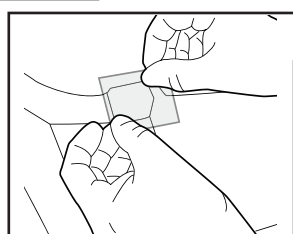


3

DO NOT OVER TIGHTEN

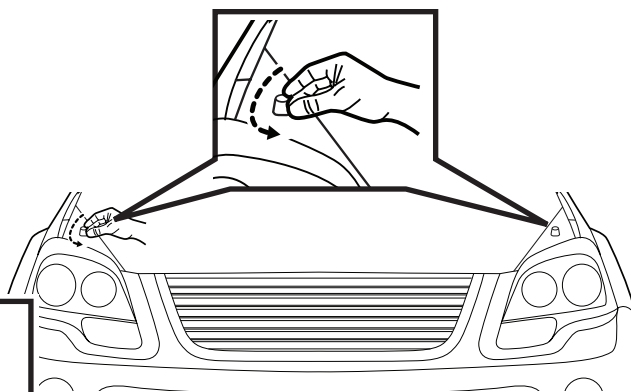


Apply a strip of protective film on each of the two (2) **TOP** corners of the grille.



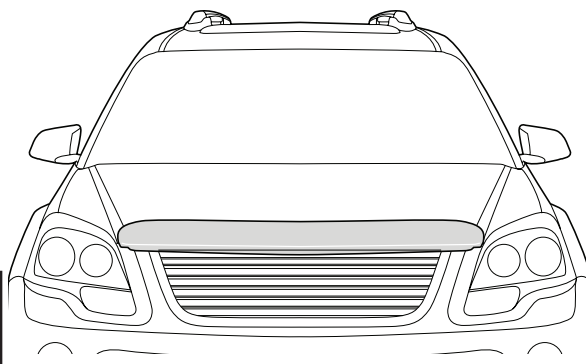
4

Turn out (counter clockwise) both fender bump stops as needed to clear grille.



5

Close hood.



6

Care and Cleaning

- Wash only with mild soap & dry with a clean cloth.

Congratulations!

You have purchased one of the many quality Lund[®] branded products offered by Lund International, Inc. We take the utmost pride in our products and want you to enjoy years of satisfaction from your investment. We have made every effort to ensure that your product is top quality in terms of fit, durability, finish and ease of installation.

LUND[®]



Check out the collection of stone and bug deflectors we offer.