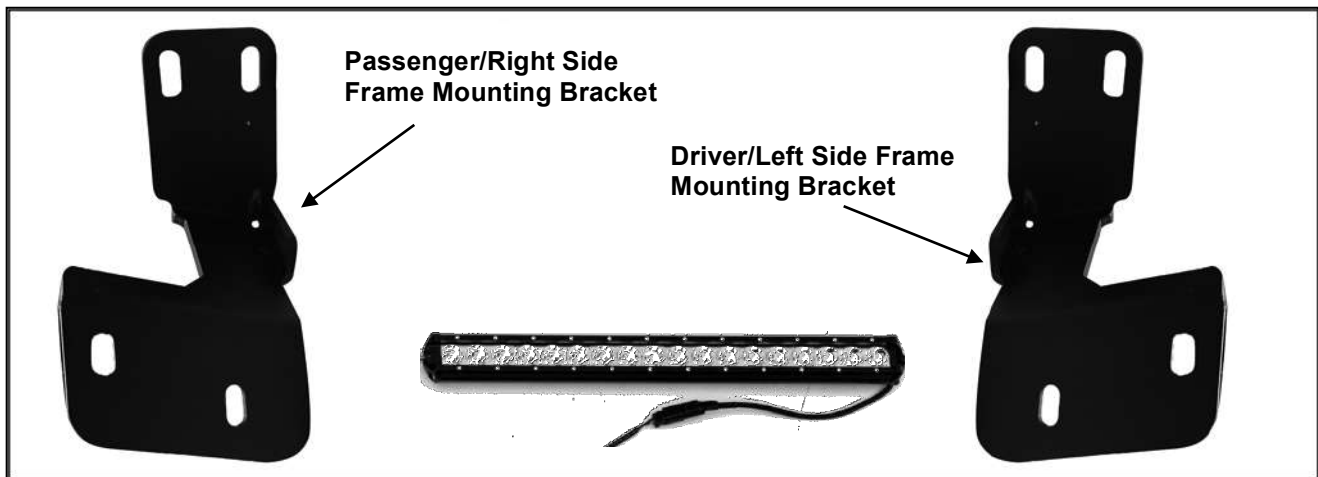


PARTS LIST:

Qty	Description	Qty	Description
1	Bull Bar	8	10mm x 27mm OD x 3mm Flat Washers
1	Driver/Left Frame Mounting Bracket	4	10mm Lock Washers
1	Passenger/Right Frame Mounting Bracket	4	10-1.5mm Hex Nuts
1	LED Light Bar	1	Wiring Harness
4	10-1.5mm x 35mm Hex Bolts	4	Bolt Assembly



EQUIPMENT NEEDED:

- Safety Glasses
- Ratchet Set
- Pliers or Adjustable Wrench

IMPORTANT NOTES:

- Bull Bar *may* interfere with parking sensors on the bumper.
- The LED light bar can be wired into the factory lighting.
- If state law requires a front license plate, a relocation kit is available separately.
- For cleaning, mild soap may be used to clean the Bull Bar, and aluminum polish may be used on the stainless steel to polish small scratches and scuffs on the finish.
- REMOVE CONTENTS FROM BOX, VERIFY ALL PARTS ARE PRESENT, & READ INSTRUCTIONS CAREFULLY. **NOTE: PROFESSIONAL INSTALLATION IS RECOMMENDED.**

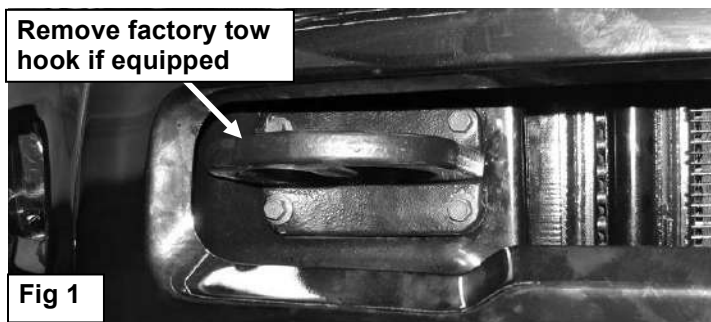
LIGHT BAR INSTALLATION:

1. Remove light bar from box and screw bolts and washers into each end.
2. Slide bolts into crossbeam brackets with the washers on the outside of the bracket, and tighten using the supplied allen key.



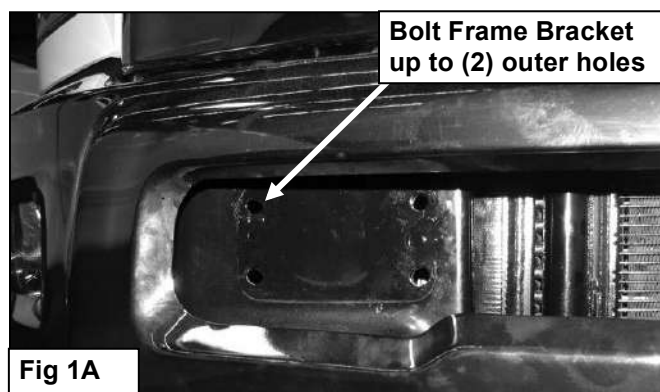
BULL BAR INSTALLATION:

1. Starting at the front of the vehicle, determine if the truck is equipped with or without factory tow hooks, (Figure 1).



Models without tow hooks:

Remove the plastic panel covering the opening in the center of the bumper, (Figure 1A).



Models with tow hooks:

Remove the (4) hex bolts holding the passenger side tow hook to the frame, **(Figure 1)**. Remove the tow hook. **TIP:** Removing the inner hex bolts securing each tow hook can be difficult to reach from behind the bumper, (long socket extensions required). It may be easier to access the (2) hex bolts by going through the front of the bumper and holding the hex nuts in place with an open-ended wrench, **(Figure 2)**. Repeat this Step to remove the driver side tow hook.



(Fig 2) Tow hook mounting hardware from behind the passenger/right side of the bumper

2. Select the passenger side Frame Mounting Bracket, **(Figure 3)**. Bolt the Bracket to the (2) lower holes with the (2) supplied bolt assembly, repeat for drivers side bracket **(Figure 4)**. Tighten at this time.



(Fig 3) Passenger/right Mounting Bracket



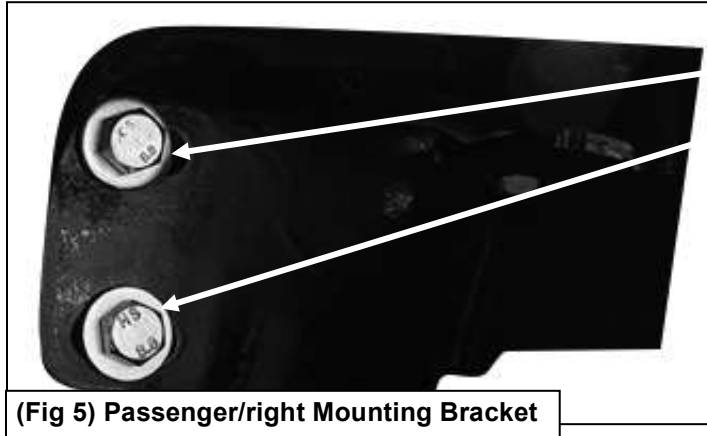
Bolt Assembly



(Fig 4) Driver/left Mounting Bracket

3. With help, position the Bull Bar up to the existing outside holes (Fig 2). Use the included (4) 10mm x 35mm Hex Bolts, (8) 10mm Flat Washers, (4) 10mm Lock Washers and (4) 10mm Hex Nuts to attach the Bull Bar to vehicle, (**Figure 5**). Snug but do not tighten hardware.

Passenger Side Installation Pictured



(2) 10mm x 35mm Hex Bolts
(4) 10mm Flat Washers
(2) 10mm Lock Washers
(2) 10mm Hex Nuts

4. Stand back from the vehicle and check to see that the Bull Bar is centered and level on the vehicle and adjust as necessary. Once properly adjusted, tighten all hardware.