



PART NUMBER: 34641678

PRODUCT: STEPS

APPLICATION: 16-C Nissan Titan

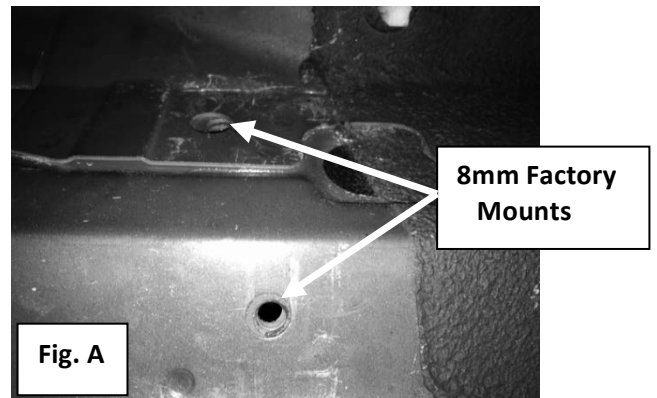
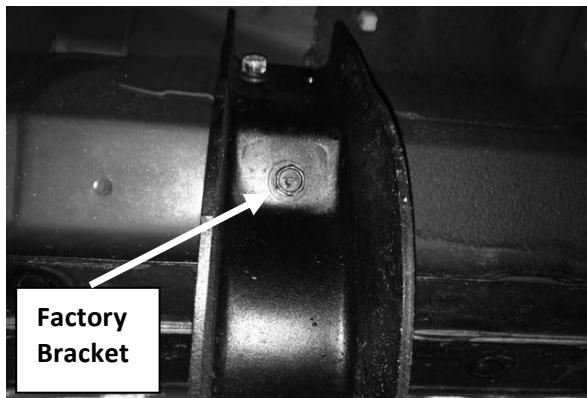
Installation Instructions

I-Sheet Number THX12

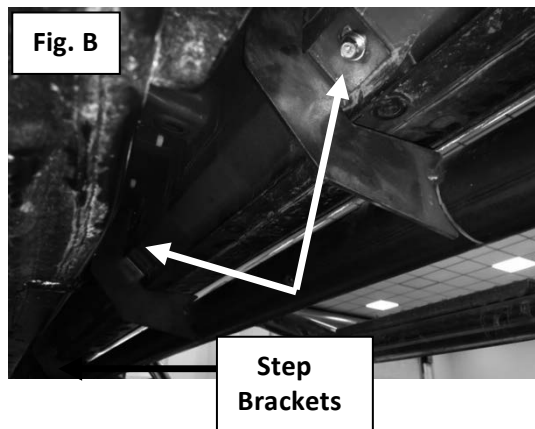
Parts Included:	Qty
Driver Side Step	1
Passenger Side Step	1
Hardware Pack	1
M8 x 30mm Hex cap with integrated washer	12

INSTRUCTIONS:

Step 1: Remove factory running boards if equipped and discard. You will see the 8mm threaded mounts in the body_ (Fig.A)



Step 2: Starting with the driver's side, lift step up into position aligning the step bracket with the 8mm OE mounts. (Fig. B)



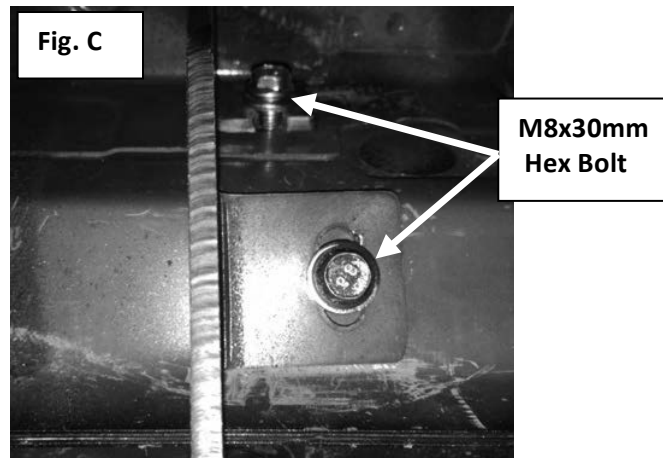


Installation Instructions

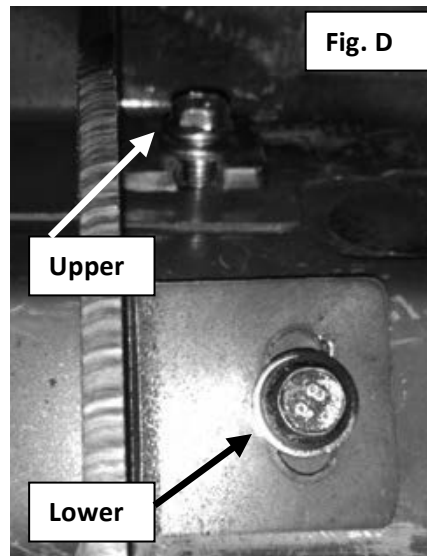
I-Sheet Number THX12

PART NUMBER: **34641678**
PRODUCT: **STEPS**
APPLICATION: **16-C Nissan Titan**

Step 3: Install using the supplied M8x30mm Hex bolt and hand tighten at this time. **(Fig. C)**



Step 4: After final adjustment, tighten all hardware starting with the three lower bolts and then finish with the upper bolts. **(Fig. D)**



Step 5: Repeat steps 2-4 with the passenger side. **NOTE: Periodically check all hardware for tightness to ensure longevity and safety of your steps.**