

LUND Floor Mats

For proper installation and best possible fit, please read all instructions **BEFORE** you begin.

Important Safety Information

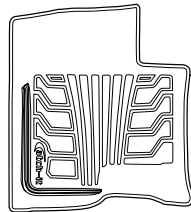


- CAUTION - Before driving, ensure that the Floor Mats are properly positioned in vehicle.
- CAUTION - Not for use in vehicles with adjustable pedals.
- Clean only with mild soap and dry with a clean cloth or air dry.
- Avoid use of Armor All or similar products since it may reduce the skid resilience of the Floor Mat.

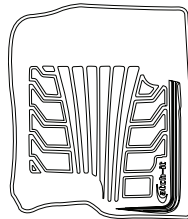
Contents

NOTE: Actual product may vary from illustration. Logo should face exterior of vehicle.

Driver Side Front



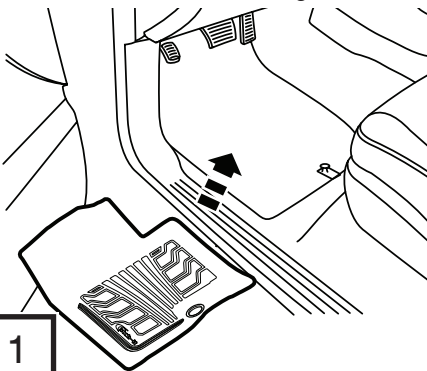
Passenger Side Front



Installation Steps

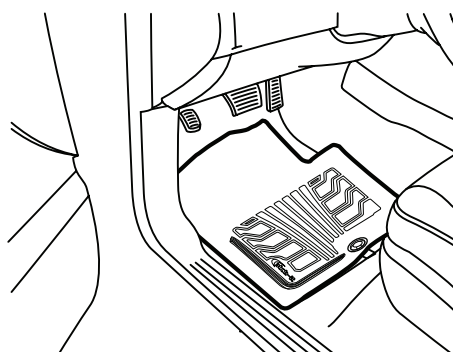
NOTE: Actual application may vary slightly from illustrations.

Remove old mat. Ensure floor mat area is clean and free of obstacles before installing.



1

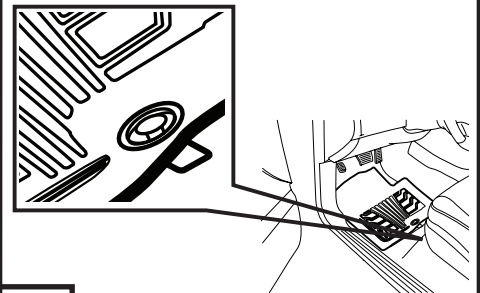
Slide floor mat in place.



2

NOTE: Logo should face exterior of vehicle.

NOTE: Use the hook latch when applicable.



3

Congratulations!

You have purchased one of the many quality Lund™ branded products offered by Lund International. We take the utmost pride in our products and want you to enjoy years of satisfaction from your investment. We have made every effort to ensure that your product is top quality in terms of fit, durability, finish and ease of installation.

LUND

