



-INSTALLATION- INSTRUCTIONS

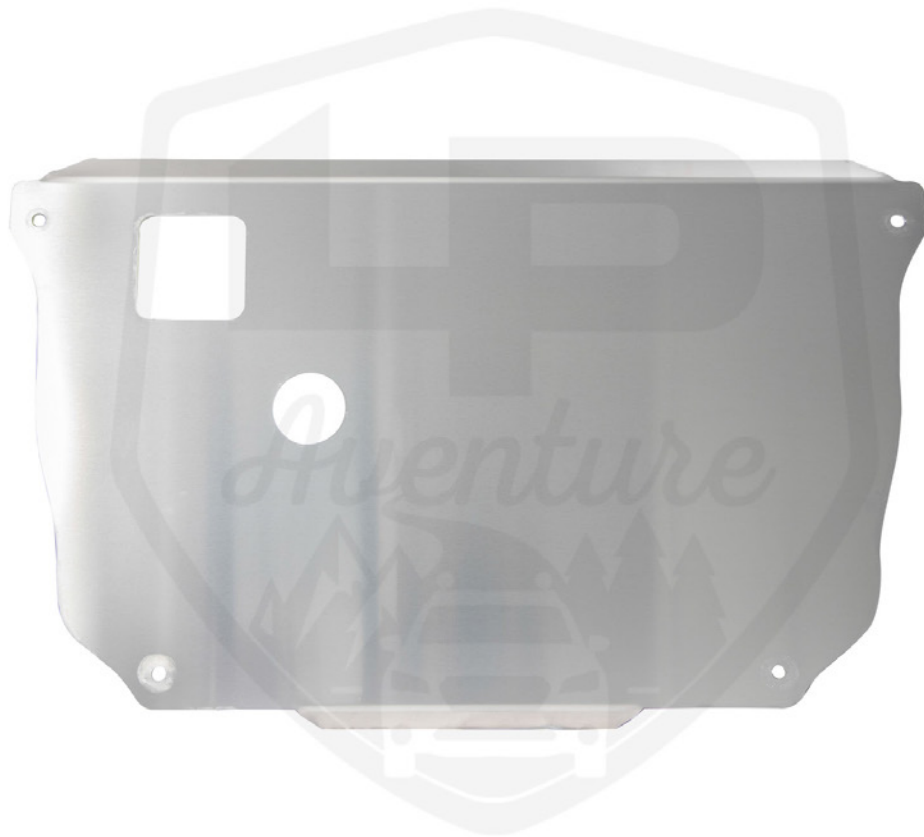


LP ADVENTURE SKID PLATE



TOYOTA RAV4 2019+

CONGRATULATIONS FOR YOUR NEW
LP AVENTURE SKID PLATE!



IN
THE
BOX



IN THE BAGS



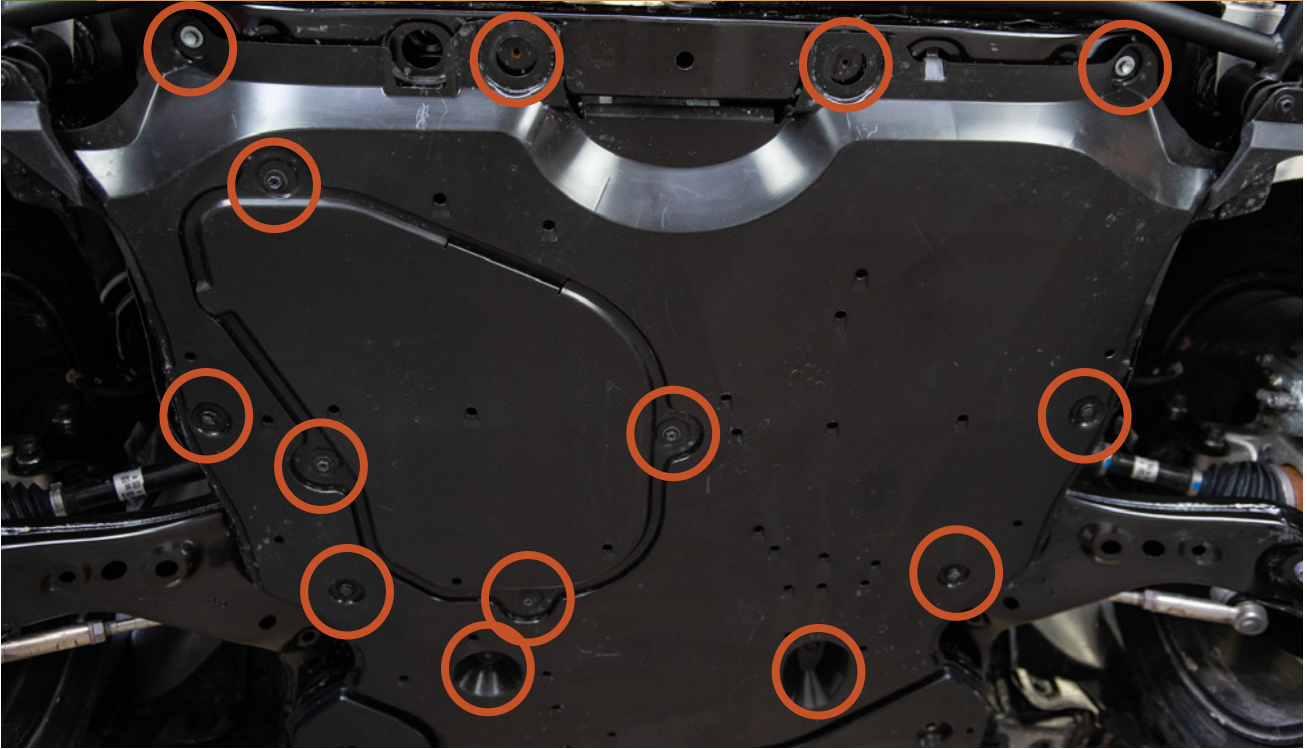


NECESSARY TOOLS

1. - We recommend the use of a lift
2. - Jack
3. - Ratchet
4. -10mm Socket
5. -19mm Socket
6. -21mm Socket
7. -10mm Wrench
8. -19mm Wrench
9. - Flat Head Screw Driver

1

REMOVE FACTORY UNDERTRAY







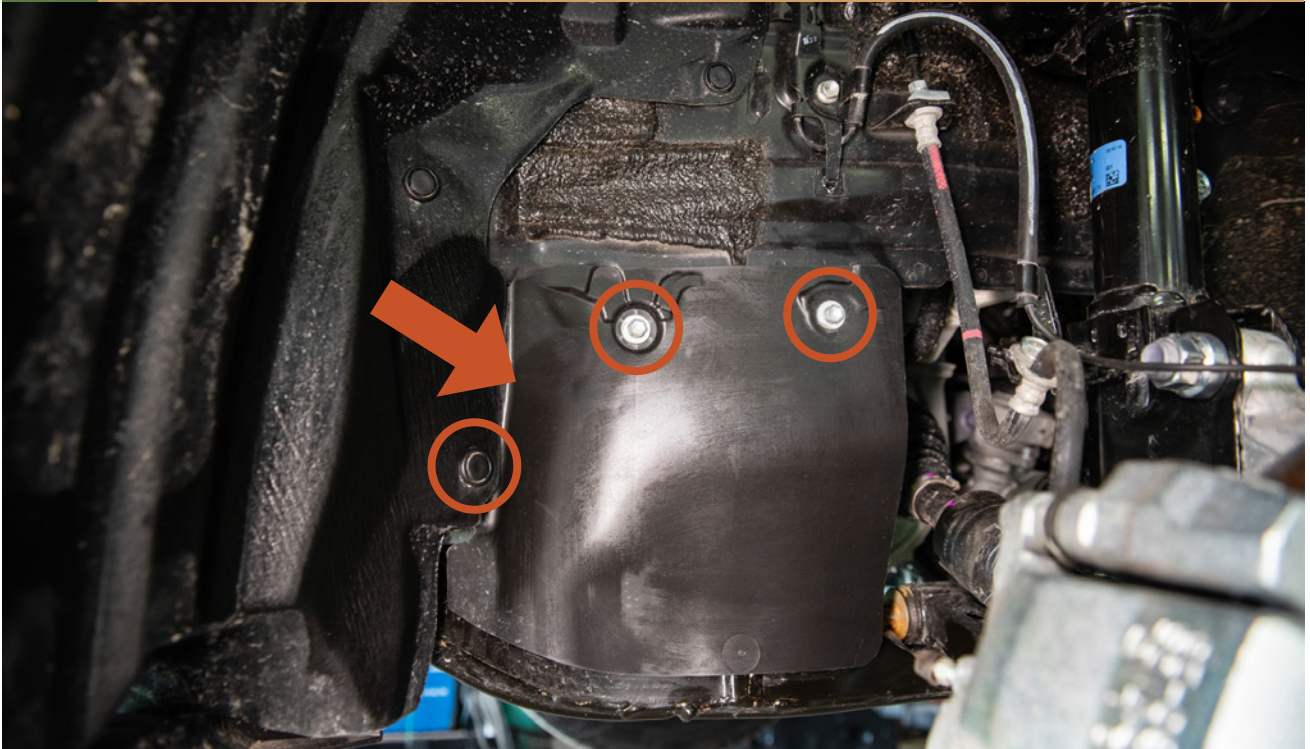
3

REMOVE LEFT FRONT WHEEL



2

REMOVE ACCESS PANEL



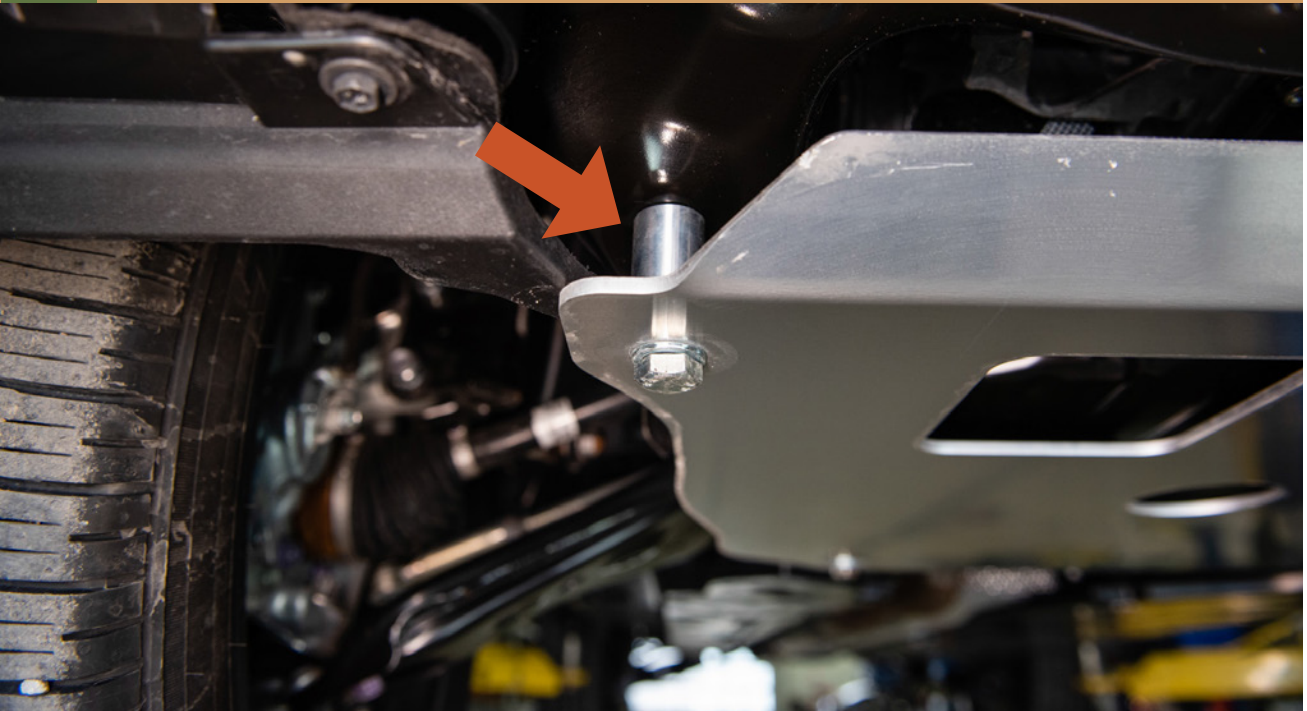
3

RAISE THE SKID INTO PLACE

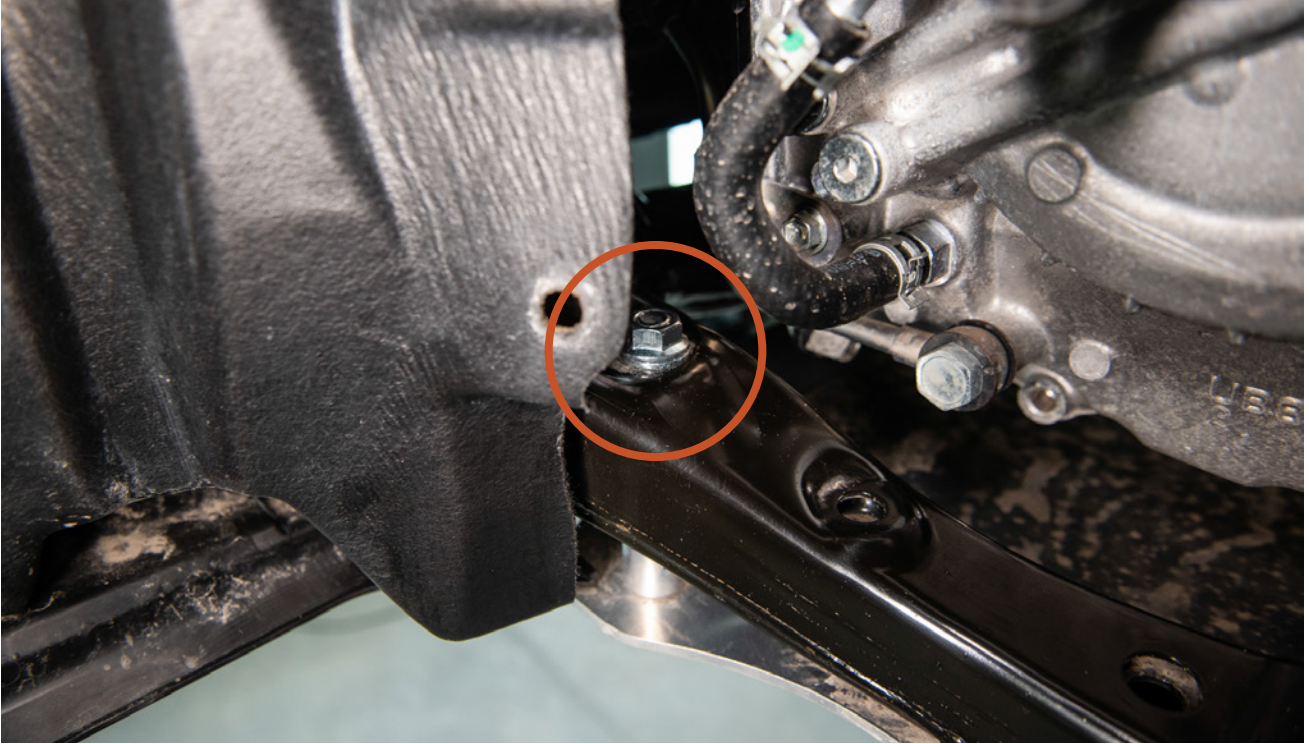


4

INSTALL PROVIDED BOLTS AND WASHER WITH SPACERS ON THE FRONT OF THE SKID PLATE



USE PROVIDED NUTS AND WASHERS ON THE INNER SIDE



5

FASTEN REAR OF THE SKID PLATE WITH THE PROVIDED BOLTS AND WASHERS



USE PROVIDED NUTS AND WASHERS
ON THE INNER SIDE



6

RE INSTALL ACCESS PANEL

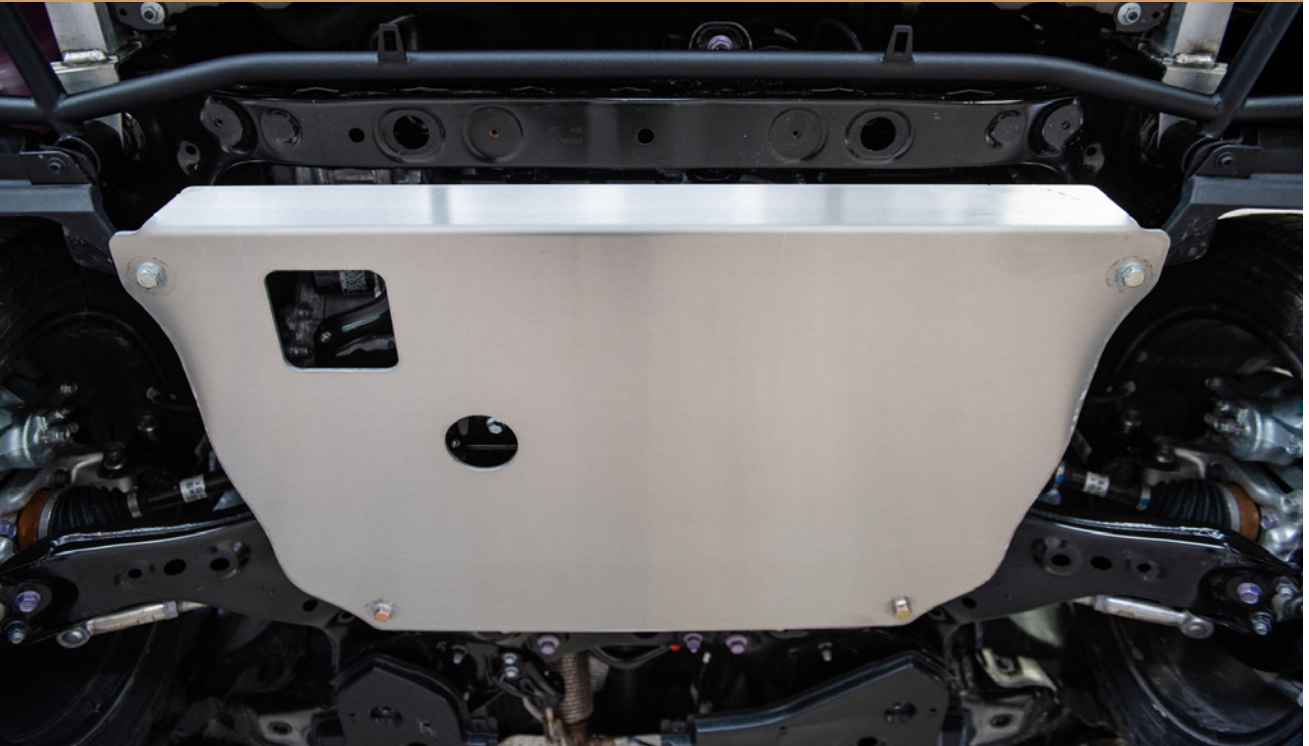


7

RE INSTALL WHEEL



INSTALLATION COMPLETE!



Rely only on high-grade performance suspension parts offered on our virtual shelves.