

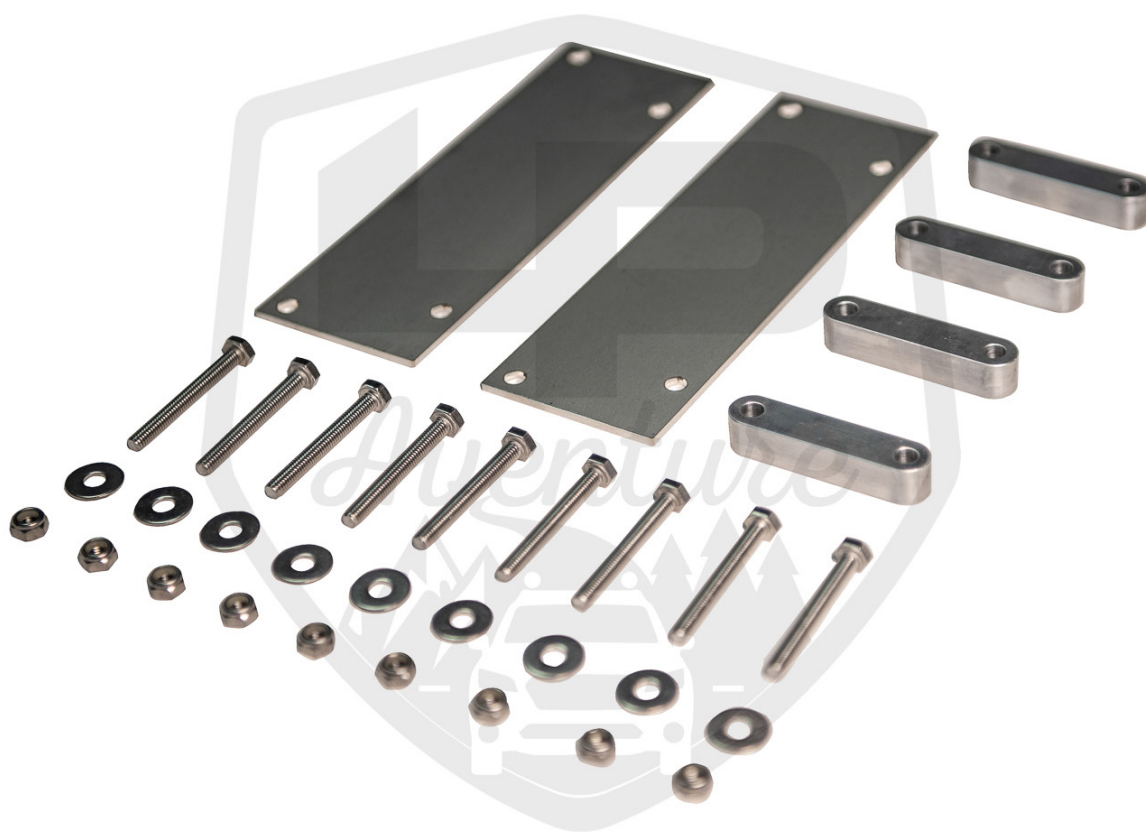


-INSTALLATION- INSTRUCTIONS

▶ LP AVENTURE AWNING PLATE KIT ◀

YAKIMA OFFGRID

CONGRATULATIONS FOR YOUR NEW
LP AWNING PLATE KIT!



IN
THE
BOX





NECESSARY TOOLS

1. - Ratchet
2. - 10mm Deep socket
3. - 10mm Wrench

1

SLIDE THE PROVIDED BOLTS INTO THE AWNING TRACKS



2

INSTALL BRACKET SPACERS



3

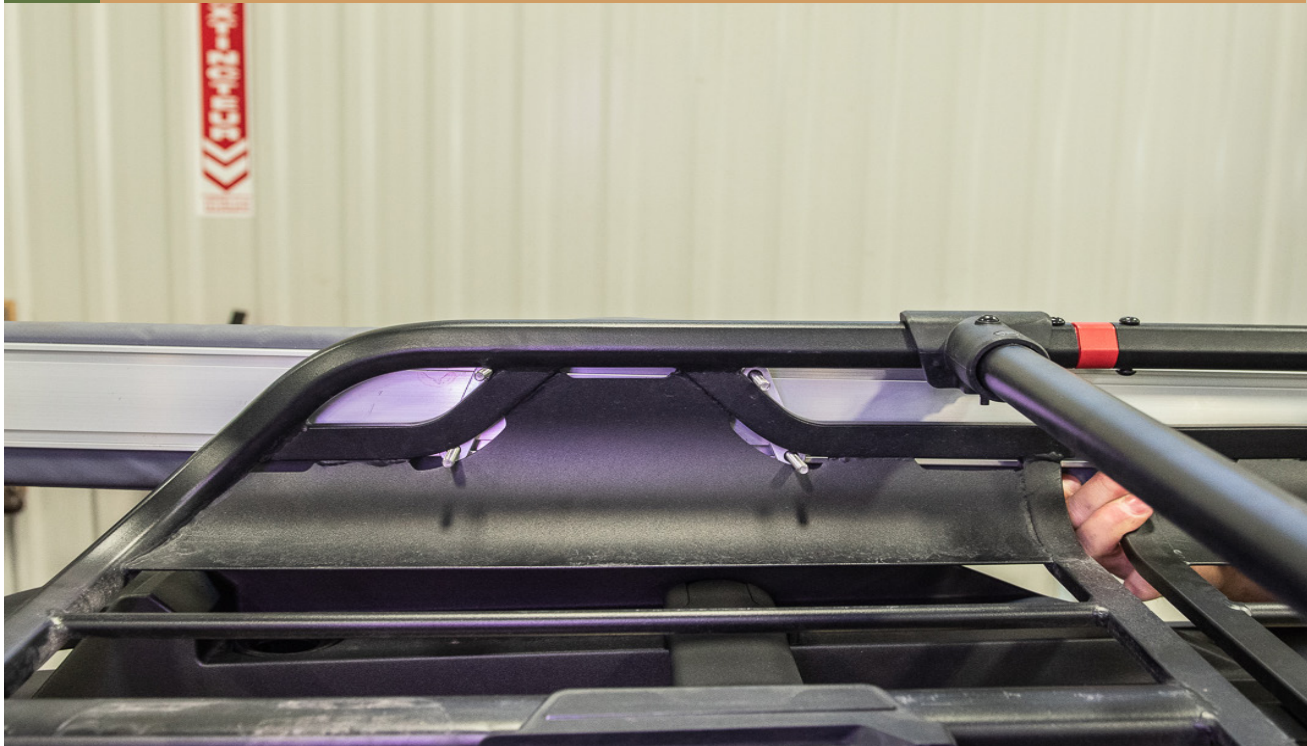
WITH THE HELP OF A FRIEND RAISE THE AWNING UP



A



NOTE A: Have the hatch open during install to help guide how far back to place the awning.



4

USING THE INCLUDED NUTS AND WASHERS INSTALL BACKING PLATES



5

MAKE SURE TO NOT OVER TIGHTEN THE NUTS TO NOT RISK DAMAGING THE AWNING RAIL



6

INSTALLATION COMPLETE



LP Adventure

If you're looking for quality roof racks & cargo carriers, visit our website.