

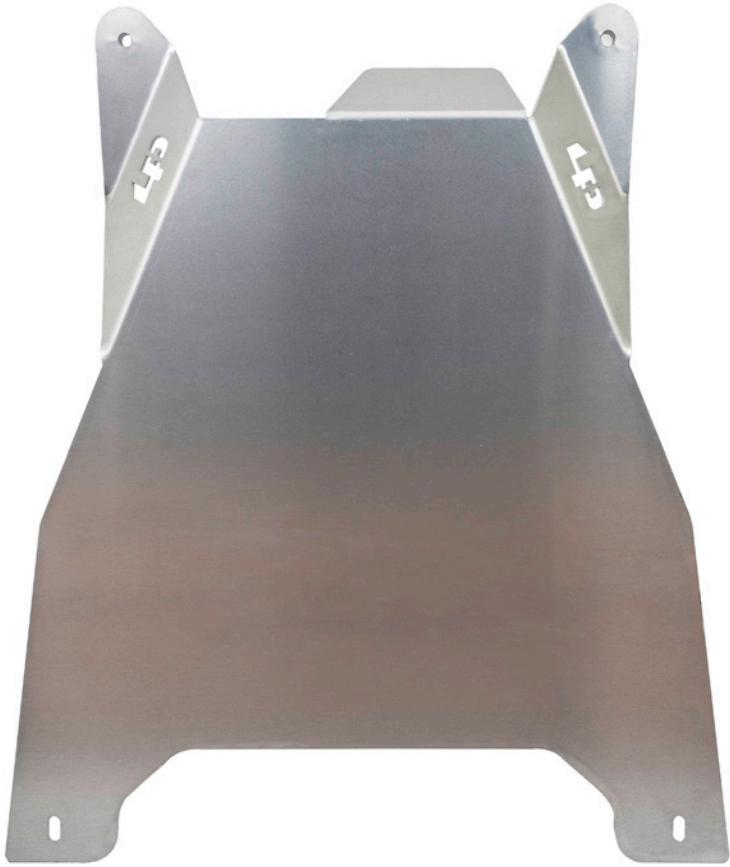


-INSTALLATION- INSTRUCTIONS

▶ LP AVENTURE CVT SKID PLATE ◀

SUBARU OUTBACK 2020

CONGRATULATIONS FOR YOUR NEW
LP AVENVENTURE SKID PLATE!



IN
THE
BOX





IN THE BAGS





NECESSARY TOOLS

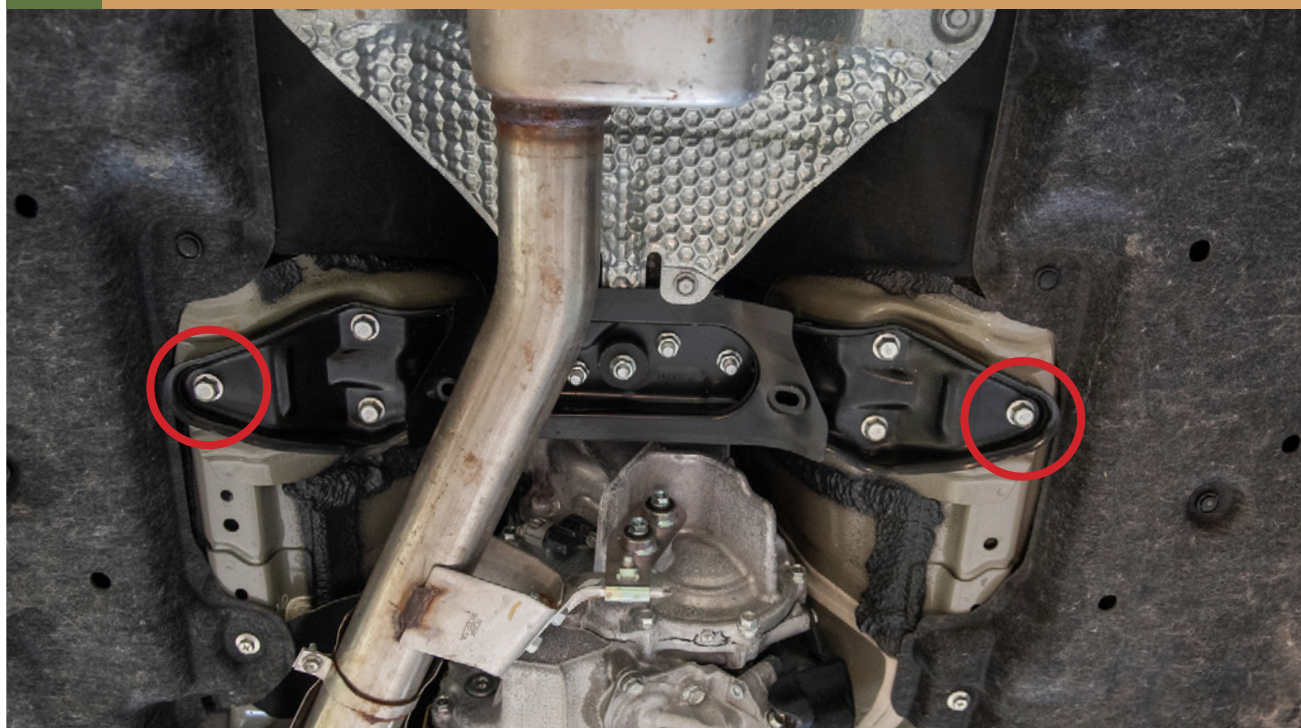
- We recommend the use of a lift
- Transmission jack (or regular jack if not on a lift)
- Ratchet
- 14mm Socket
- 17mm Socket

****INSTALLATION IS PERFORMED WITH LP AVENTURE MAIN SKID PLATE. THE MAIN SKID PLATE IS NOT NECESSARY AND THE STEPS WILL BE SIMILAR****



1

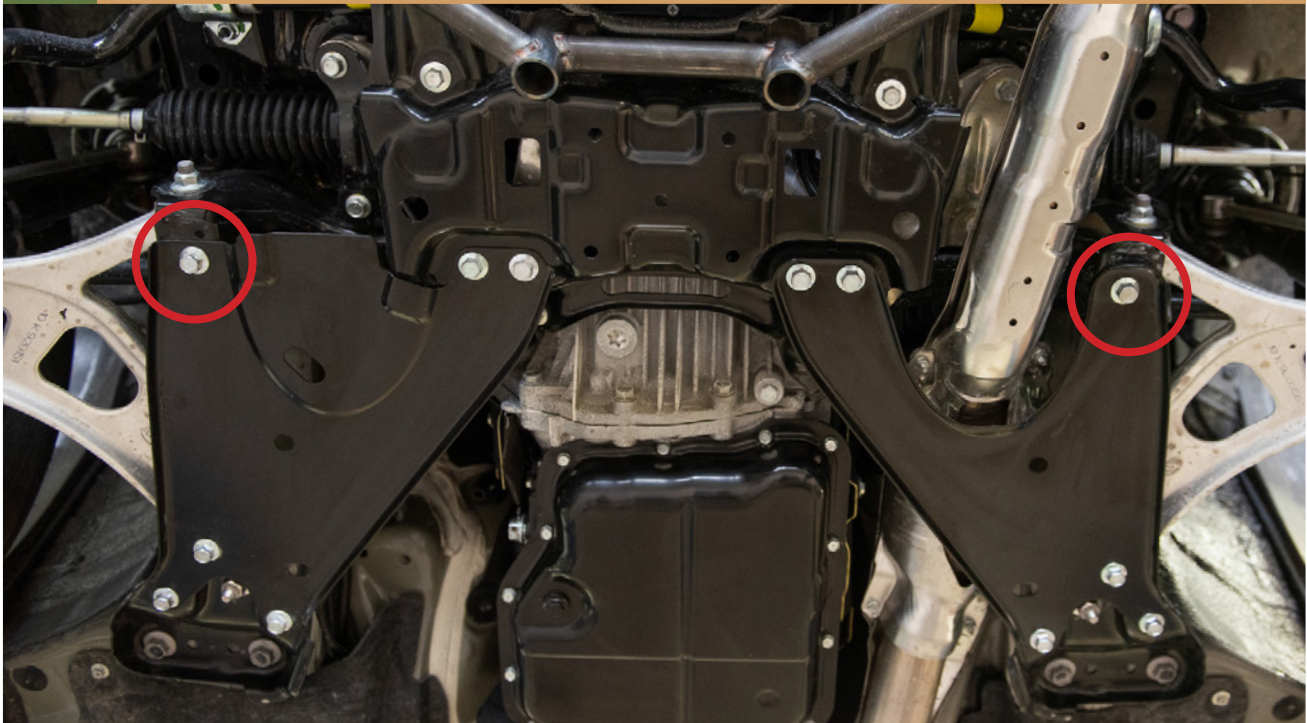
REMOVE TWO TRANSMISSION SUPPORT BOLTS



2A WITH A MAIN SKID PLATE, REMOVE REAR BOLTS AND SPACERS



2B IF YOU DO NOT HAVE A MAIN SKID PLATE, REMOVE TWO BOLTS FROM FRONT A-ARM SUPPORTS



3

USE A JACK AND PIECE OF WOOD TO SUPPORT THE SKID PLATE DURING INSTALLATION



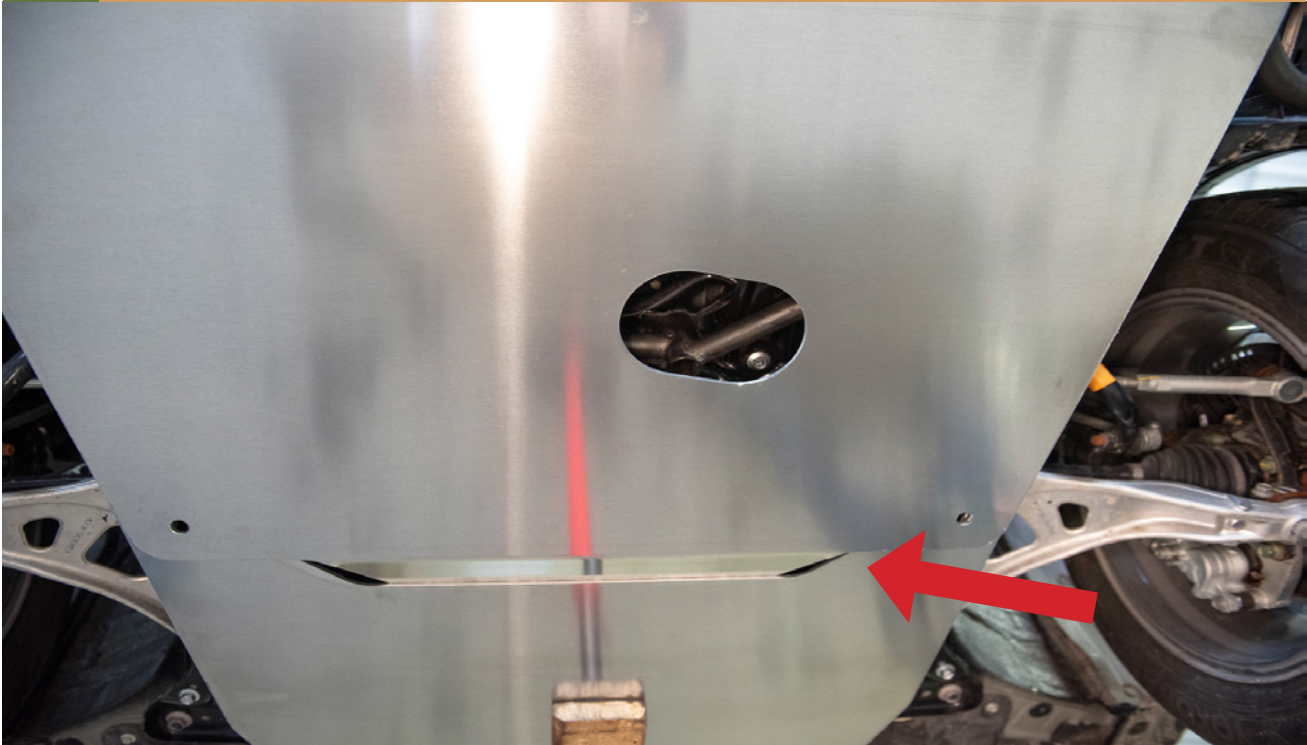
4

RAISE THE SKID PLATE INTO PLACE



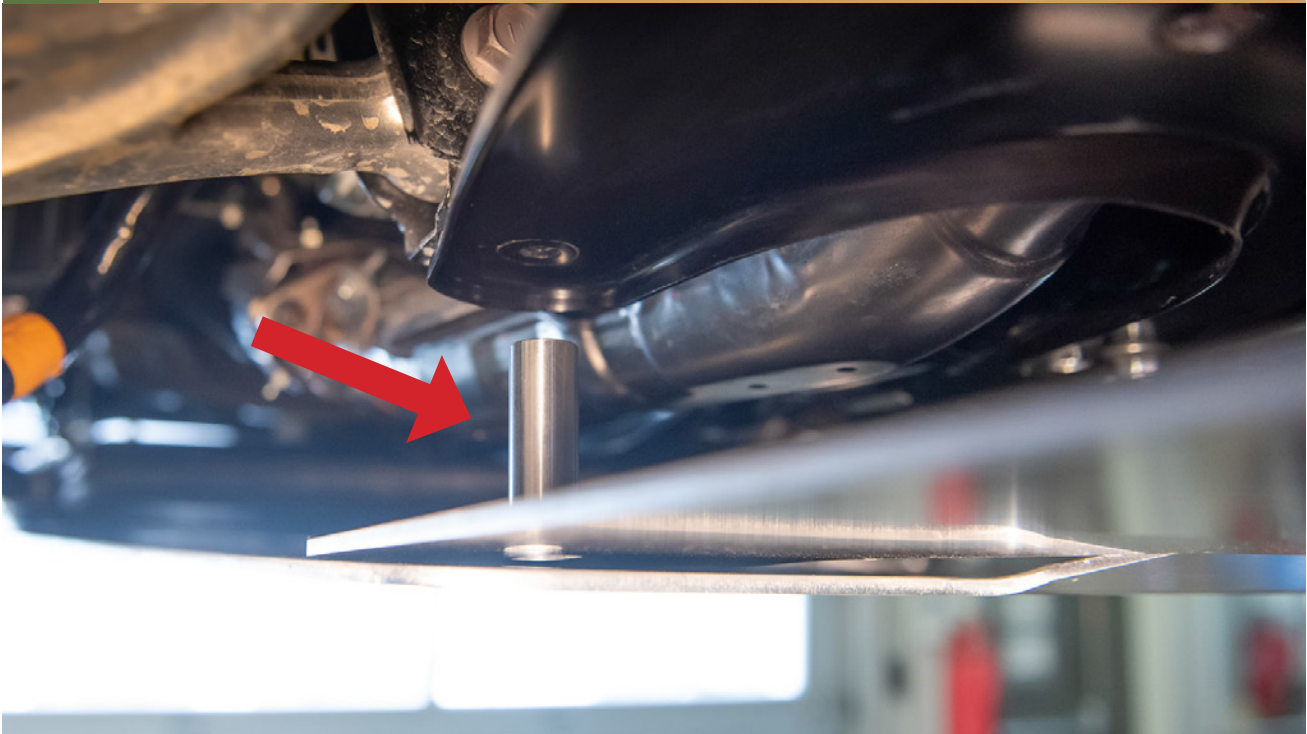
5

PLACE THE FRONT OF THE CVT SKID PLATE OVER THE REAR OF THE MAIN SKID PLATE.



6

RE INSTALL THE SKID PLATE SPACERS.
IF YOU DO NOT HAVE THE MAIN SKID YOU JUST NEED TO INSTALL THE SKID PLATE SPACERS



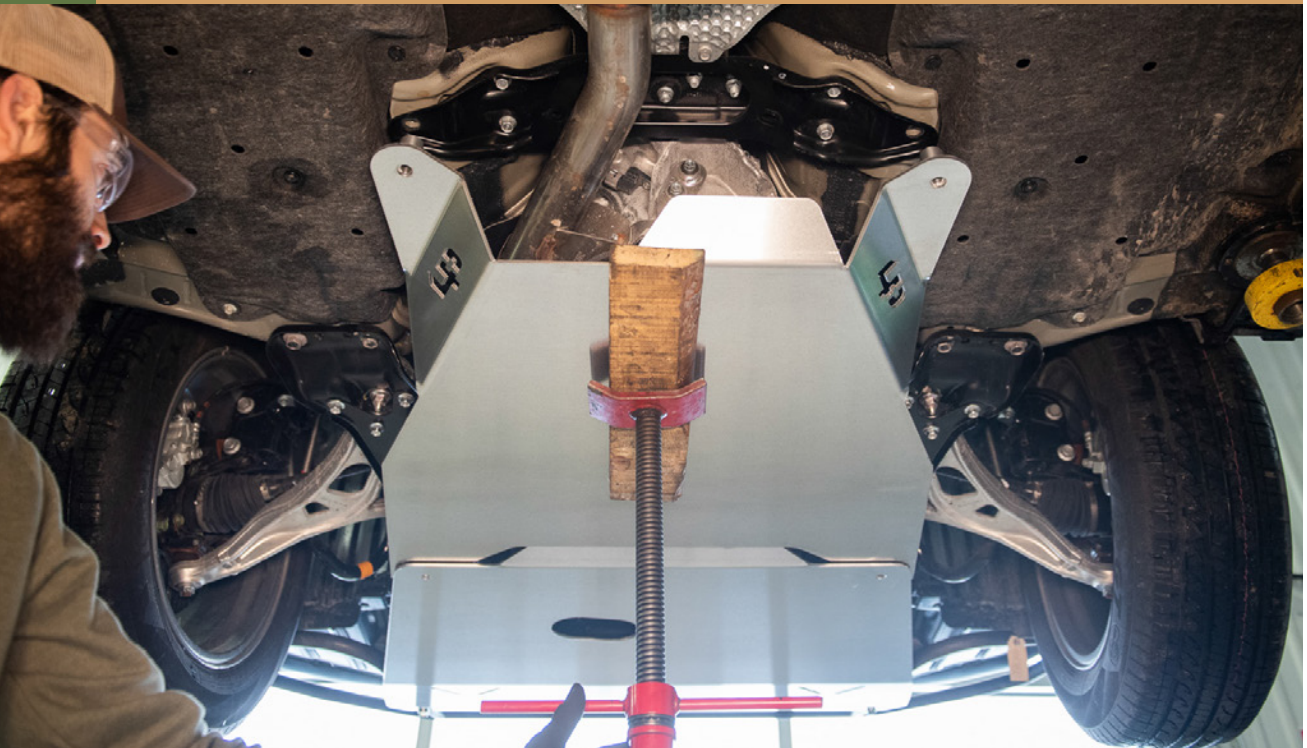
7

INSTALL BOLTS



8

BOLT UP REAR OF THE CVT SKID PLATE





9

INSTALLATION COMPLETE!



Rely only on high-grade performance suspension parts offered on our virtual shelves.