



-INSTALLATION- INSTRUCTIONS

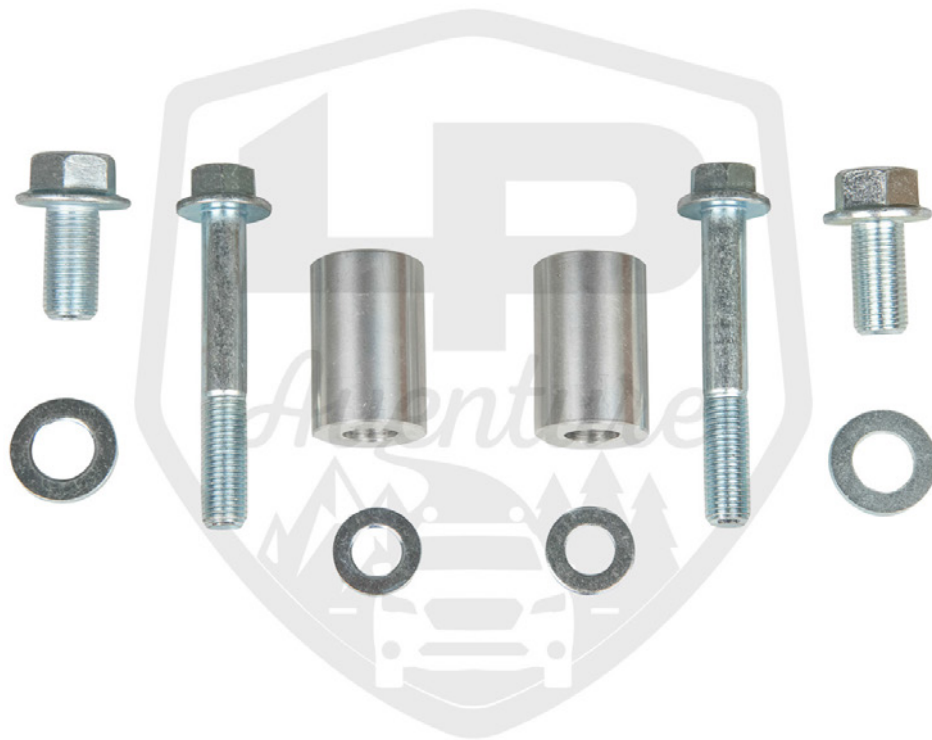
▶ LP ADVENTURE MAIN SKID PLATE ◀

SUBARU FORESTER 2019-2020

CONGRATULATIONS FOR YOUR NEW
LP AVENTURE MAIN SKID PLATE!



IN THE BAG



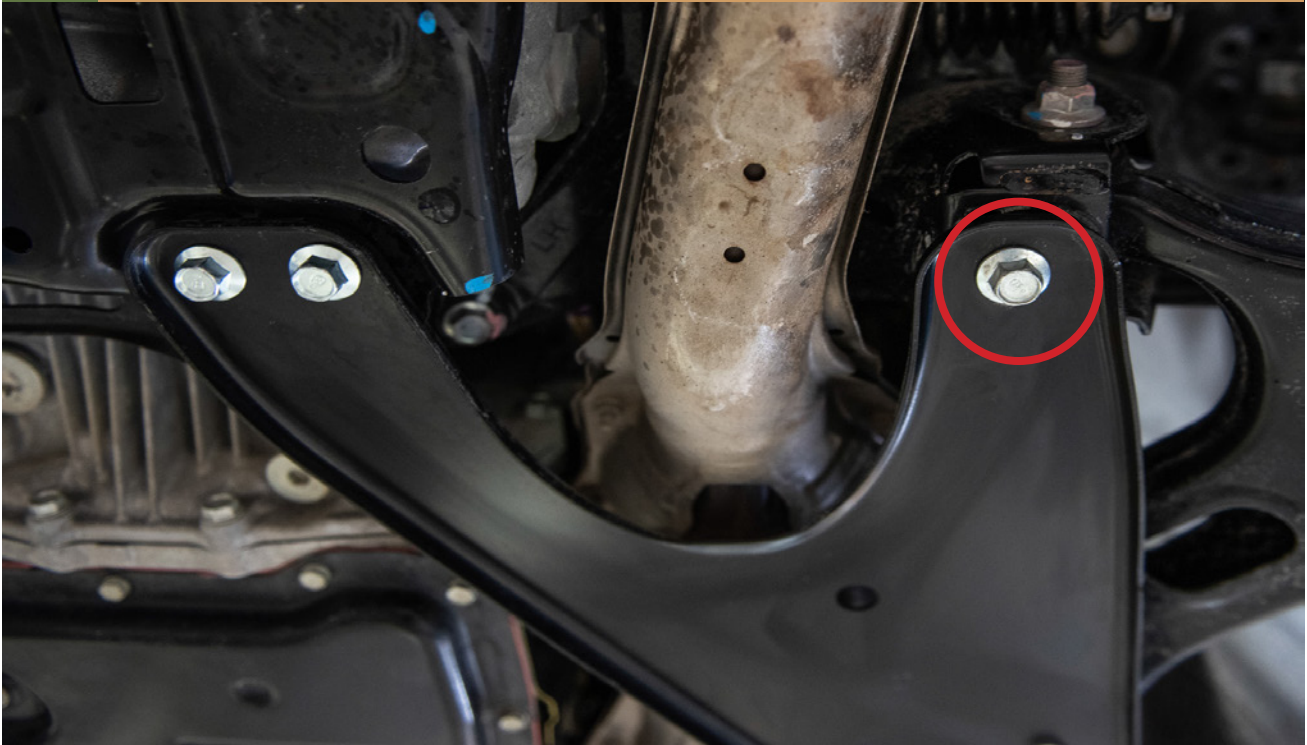


NECESSARY TOOLS

- We recommend the use of a lift**
- Transmission jack or regular jack**
- Ratchet**
- 14mm Socket**
- 17mm Socket**

1

WITH A LP AVENTURE BUMPER GUARD INSTALLED REMOVE THESE BOLTS FOR THE REAR OF THE SKID PLATE





2

USE A JACK AND A PIECE OF WOOD TO HELP STABILIZE THE MAIN SKID PLATE DURING INSTALLATION



3

RAISE THE MAIN SKID PLATE INTO PLACE





4

BOLT FRONT OF THE MAIN SKID PLATE





5

INSTALL SPACERS AT THE REAR OF THE MAIN SKID PLATE





6

BOLT UP THE REAR OF THE MAIN SKID PLATE



7

TIGHTEN ALL HARDWARE



8

INSTALLATION COMPLETE!



Rely only on high-grade performance suspension parts offered on our virtual shelves.