

COMPUTERSCALES[®] XLi Hybrid OPERATING INSTRUCTIONS

App version 1.25

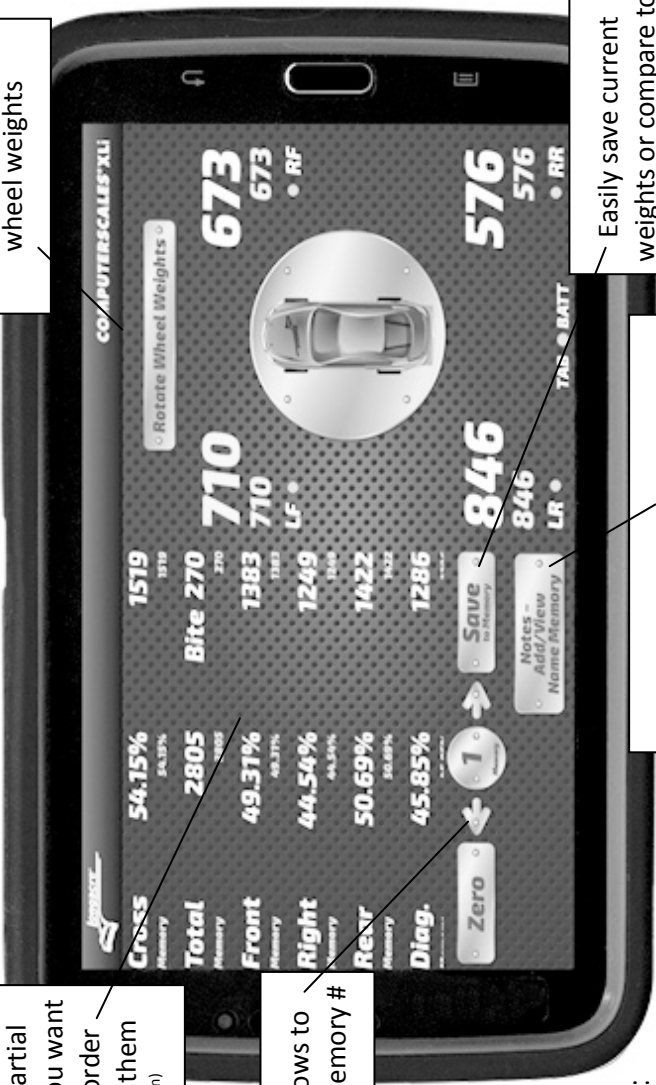


Quick Start Instructions

Tap button to rotate wheel weights

Customize your display to show only the partial weights and %s you want to see - in the order you want to see them (Swipe to Setup screen)

Tap arrows to change Memory #



Easily save current weights or compare to stored weights & %s

Name your memory locations and keep notes about your setup

CAPACITY:
Most #'s listed **1500 lbs** (650 kgm) per pad.
Excess weight can damage the load cells.

This tablet uses the Android® operating system. Many functions are similar to 'Smartphones' and it uses a touch screen to operate.

Hybrid Scales – Part Wired / Part Wireless

Hybrid systems have 2 separate parts:

1. A pad control board under the tablet that powers the load cells and sends the data to the tablet display. This is where the cables are connected.
2. The tablet display. This connects to the pad control board via Bluetooth® and can be removed and used wirelessly.

2 separate parts - both with separate ON switches

Tablet: Push the **ON** button on the bottom right side and hold for 3 seconds to turn on the tablet and launch the operating system. After about 15 seconds the home page will appear. **IMPORTANT: WAIT FOR BLUETOOTH® ICON TO APPEAR BEFORE LAUNCHING COMPUTERSCALES XLI™ APP.**



Tap the app icon on the Home Page to launch the ‘app’
COMPUTERSCALES XLI.

Pad Control Box: Now turn the **Control Box ON**. There is a small silver button just below where the tablet **ON** switch is located. The LED light indicates power is turned on. In a few seconds it will connect with the tablet and display your weights. You are ready to go.

NOTE: If the tablet shuts down or goes into ‘sleep’ mode you will need to turn the Control Box back on.

To use the display wirelessly just remove the tablet from the holder by releasing the spring loaded bracket. When reinstalling, be sure the ON switch is on the lower right. If not, the display will be upside down.

Zero: Tap BEFORE putting car on scales. DON'T zero AFTER car is on scales.



Memory: Tap arrows (< & >) to select memory number. Tap **Save to Memory** to save current weights. See below to enter optional **Memory Name** and **Notes**. Memory weights are shown under current weights. If you don't want memory numbers to show on the display simply select Memory #0. If the memory location already contains data a warning message will pop up. If you do not want to overwrite the location choose **NO** and tap arrows (< & >) to select a different memory number.


Note Taking: Tap arrows (< & >) to select memory number. Tap **Notes – Add/View Name Memory** at the bottom right. A keyboard will appear with text boxes at the top.

At the very top is the Memory number you selected for reference (in yellow).

Under that is a narrow text box called **Memory Name**. Tap this box to enter. An orange border will confirm the box is selected. This is where you will name this Memory number – title, date, track, etc. – your choice. 15 characters maximum. Naming the location is optional. The **Memory Name** will display on the main screen at the bottom.

Next below is the **Notes** box. Tap on this box – orange border confirms the box is selected. Assuming this is empty you can begin typing notes (it begins in the middle of the screen). There is almost no limit to the notes and data you can enter. If you fill the screen up it will scroll for more space. Use your fingers or the stylus (the stylus will keep the tablet screen cleaner). To correct errors or edit your notes tap the screen where you want to edit. A blue arrow will appear to indicate your location. Back up (use the tablet back space button) and retype as needed. If you want to start over hold your finger or stylus on the copy until the entire word is highlighted. Then go to the top and tap **Select All**. Re-enter notes. The original notes will be erased.

To take notes by voice go to the second box from the left at the bottom of the keyboard. This should have a microphone  icon (if it has anything else in this box tap and hold – another box will appear above it with the microphone icon – tap on that). When you tap this icon the keyboard will disappear and the  icon will appear in the center with “Speak Now” above it. Speak directly into the tablet microphone at the bottom. Speak slowly and clearly. There should not be any significant background noise. Your words will appear on the screen. This is an Android® function and works well with some practice but is not always perfect. Even if it gets a few words wrong you can edit to correct the errors. This can still be faster than typing. This voice recognition improves with use as the tablet ‘learns’ to understand you better.

To pause speaking tap the  icon. It will change to black & white and “Tap to speak” will appear. Tap again to resume speaking. Close the voice input box with the keyboard icon (or X on some Android® versions) and the full keyboard will reappear. If needed edit your voice notes and save.

When done tap **Save Name & Notes**. The app will take you back to the main screen. (10” tablet already shows the main screen so Save Notes button just saves the file.

In the future to view these notes tap the arrows (< & >) to select the memory number and tap the **Notes – Add/View Name Memory** button again. You can edit these notes at any time or you can erase them completely for other future use. DX3 10” Hybrid systems have 50 Memory locations. DX2 7” Hybrid systems have 10 Memory locations.

Note: While in this Note Taking screen you will still be able to see part of the main screen in the background (except on 10” side-by-side note taking).

Refer to the **Setup Screen** section for instructions on saving your Memory and Notes to file for transfer to your PC, spreadsheet or setup software. Save one location or all as a group.

10” Tablet Side-by-Side Note Taking: (Shown on page 6) Note taking screen and main application screen are shown side-by-side. Note taking functions the same as the smaller tablet but offers the benefit of the side-by-side display for you to easily keep track of everything on one screen and a button to quickly erase your Notes and Memory Name and start over.

The screenshot shows the 'Memory: 1' screen in the longacre.com app. At the top, the 'Memory Name' field contains 'Evergreen'. Below it is a 'Notes' section with a text input area. At the bottom, there are two buttons: 'Save Name & Notes' and 'Cancel'. A summary bar shows 'Total 2849 Bite' for 'Evergreen'. The bottom of the screen shows a keyboard with a microphone icon on the spacebar. Two callout boxes provide instructions: one for naming memory locations and another for using voice input. A third callout box points to the microphone icon on the keyboard, explaining how to access options if it's not visible.

Name your memory locations to easily keep track of your setups

Memory: 1

Memory Name:
Evergreen

Notes:
Enter notes here

Enter notes about your setup - The screen will scroll if you need more space - Use the keyboard or microphone for voice input

Save Name & Notes Cancel

Total 2849 Bite
Evergreen 2849

Ever green Evergreen Evergreen

Enter notes with voice input. Tap microphone to record – tap again to pause. Tap keyboard (or X in upper right corner) to close voice input

Speak now

Tap to speak

Hold down to get options if the microphone isn't showing



COMPUTERSCALES® XLI

Memory: 1

Save Notes

Memory Name: MONROE 6-18

Notes:
 add 2 psi to RF
 1% more cross
 of spring to 320

SPRINGS:
 RF 320 LF 350 RR 175 LR 200

TIRE PRESS:
 RF 28 LF 18 RR 25 LR 14

CAMBER: RF +3.5 LF -1.5
 CASTER: RF +2.0 LF +1.0

STAGGER:
 FRONT: 1.5 REAR: 3.5

Erase Notes

Rotate Wheel Weights



Save to Memory

710	673	RF	591	1548	
710	673	RF	591	1548	1548
LF			RR	Bite 284	284
			TAB	1383	1383
			BATT	1264	1264
875	54.3%				
875	54.3%				
LR	Total 2849				
	2849				
Front 48.5%					
48.5%					
Right 44.4%					
44.4%					
MONROE 6-18					
MONROE 6-18					

Zero

Save to Memory

10" tablet with side-by-side note taking feature

Rotate wheel weights on display: Tap the Rotate Wheel Weights button. Weights and car icon rotate clockwise in 90° increments. This is helpful if you are standing at the front or the side of the car. The wheel weights are oriented to where you are standing.

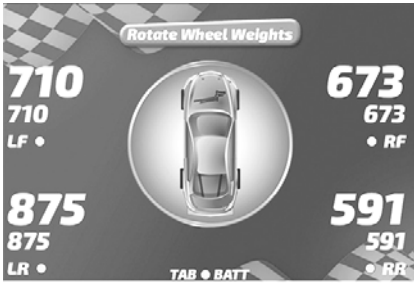
'Sleep' Mode: To conserve battery power the tablet automatically goes into 'sleep' mode after 30 minutes. About 5 seconds after that the control box will also shut down. To restart push **ON** once (don't hold as when turning tablet on) and also push the control box button. This restart happens almost instantly. To manually put into Sleep Mode (save power) push **ON** once (don't hold). The control box will automatically shut down too. Restart as above.

To shut system down: (different from 'Sleep') Push & HOLD ON for 3 seconds. Display changes. Tap 'Power Off' and then tap 'OK'. **If you don't do this the tablet battery may be low the next time.**

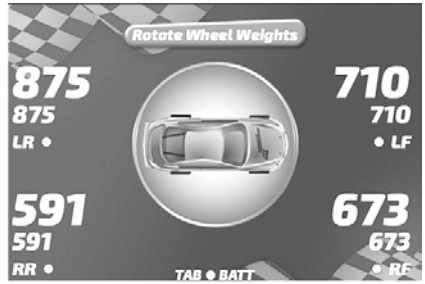
Recharge tablet: The tablet has a rechargeable battery that runs for 6-8 hours. Tablet recharger is included. Battery status is indicated on the app screen. Connect charger at bottom center of tablet. Tablet recharge takes 5-6 hours.

Replace control box batteries: The control box runs off separate Alkaline batteries. Access is behind the control box and uses 3 "D" cell batteries. Remove the 4 screws for access. These should last 120+ hours or roughly 2 years. The LED on the control box changes to RED when low.

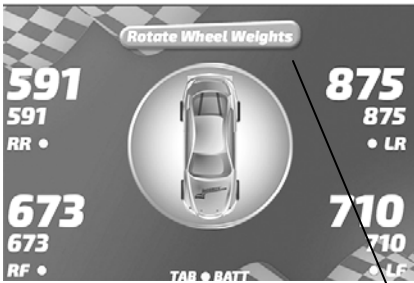
Re-pairing: The control box and tablet are connected wirelessly via Bluetooth®. Occasionally the pairing between the two will be lost and you will need to re-pair. This is a very simple process that takes less than a minute. Refer to page 20 for pairing instructions.



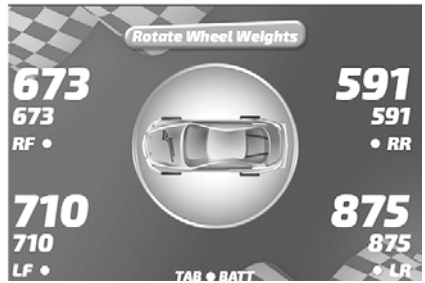
Wheel weights oriented for standing at the back of the car or the driver sitting in the car



Wheel weights oriented for standing to the right of the car



Wheel weights oriented for standing at the front of the car



Wheel weights oriented for standing to the left of the car

Tap the Rotate Wheel Weights button and the weights will rotate with the car so you can always orient them to where you are standing

Application Features

NOTE: Feature differences between DX3 (10") and DX2 (7") noted where applicable.


Different Displays: Accessed by swiping your fingertip across the display, side to side.

- **Bright Sunlight Mode:** (DX3 only) Swipe your finger left-to-right. This is B&W maximum contrast to allow easier reading in very bright conditions. Swipe back right-to-left to get back to the main screen.

- **Low Battery Indications:**

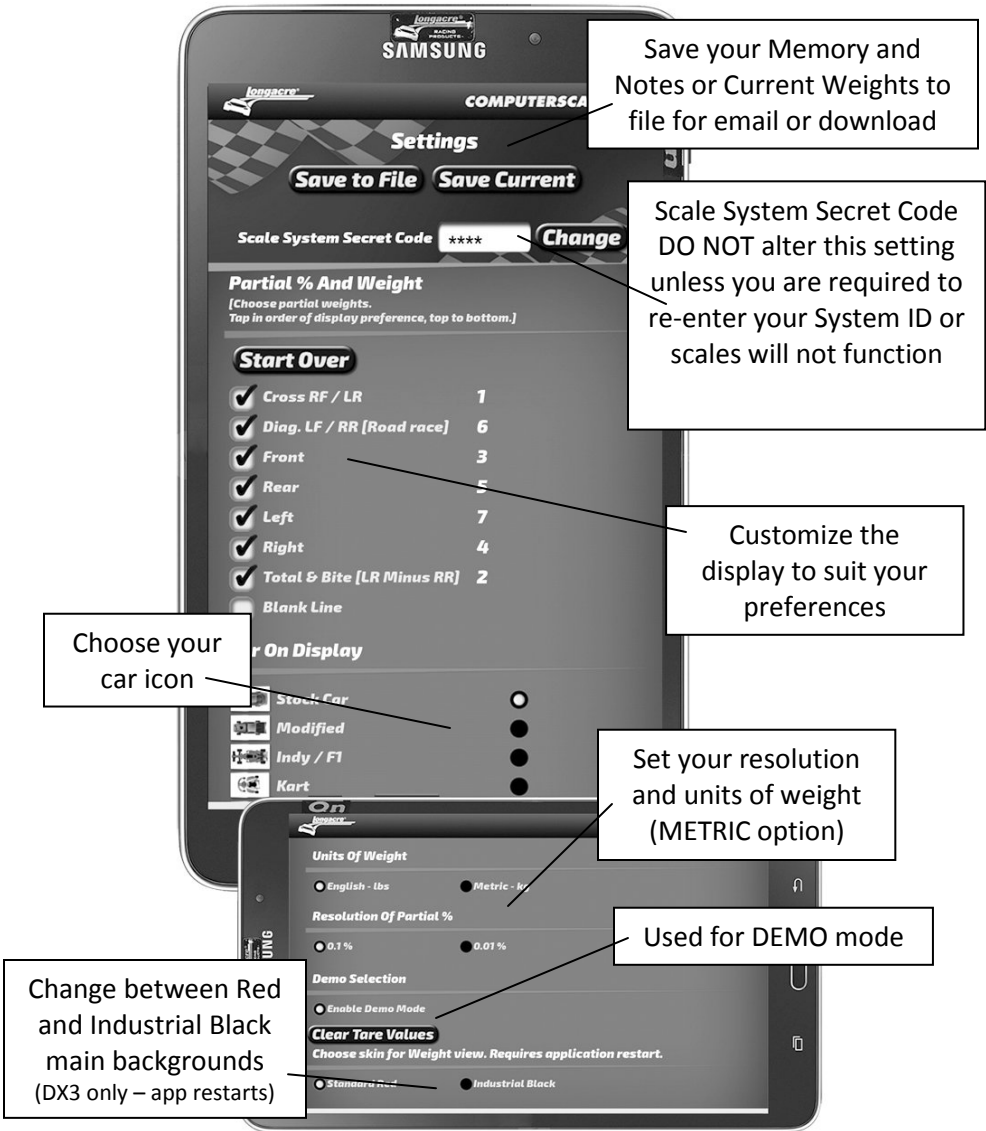
Control Box battery indication is the LED on the control box. It is also shown on the tablet display just under the car icon **PAD ● BATT**. When the batteries get low it will change to **red**. The control box runs off separate Alkaline batteries. Access is behind the control box and uses 3 "D" cell batteries. Remove the 4 screws for access. These should last 120+ hours or roughly 2 years.

Note: If there is no '**Low Battery**' indication on the control box or tablet screen changing the batteries is not necessary and will not change or improve performance.

Tablet battery indication is on the display just under the car icon **TAB ● BATT**. You can also go to the tablet Home Page by tapping  at bottom right. Battery level will be shown at the top right with a percentage.

Put in Sleep Mode when not being used. This conserves tablet battery life. Tablet can be left on in Sleep Mode while you are working on the car but should be powered off at the end of the day. Control box shuts down automatically when tablet is in sleep mode or powered off.

When you are done be sure to **POWER OFF the tablet** (different than Sleep). Push **ON** and **hold 3 seconds**. Message comes up. **Tap 'Power Off', then tap 'OK'**. This should be done when you are not going to use the scales for several hours or longer. If not done the tablet battery may be low or dead the next time you want to use the system.



Setup screens
 (Portrait display shown for space – Hybrid scales use landscape mode only)

- **Setup Screen:** Swipe your finger right-to-left to enter Setup Mode

DO NOT alter Scale System Secret Code on the setup screen. This involves the System ID security code. If this is altered the scales will not function without re-entering the SysID. See instructions enclosed.

- **Setup Mode:** Here you can make changes to suit your preferences. To change the **Partial %s** displayed first tap **Start Over** at the top of the list. (For changes on small buttons consider using the stylus if you have difficulty.) Tap your preferences in the order you want them displayed. The order will be shown at the right. You can even add a blank line to separate groups. Select as many or as few as you want. Up to five will be shown all the time on the main screen but you can easily access any others selected by scrolling the list up or down.

While in the **Setup Mode** you can also change other settings – for example partial % – .1% or .01%, the car icon, weight units, etc. **Here is where you can convert to METRIC**. Select your preferences. These will stay until you change them again. When done, swipe back to the main screen. This automatically ‘saves’ your selections.

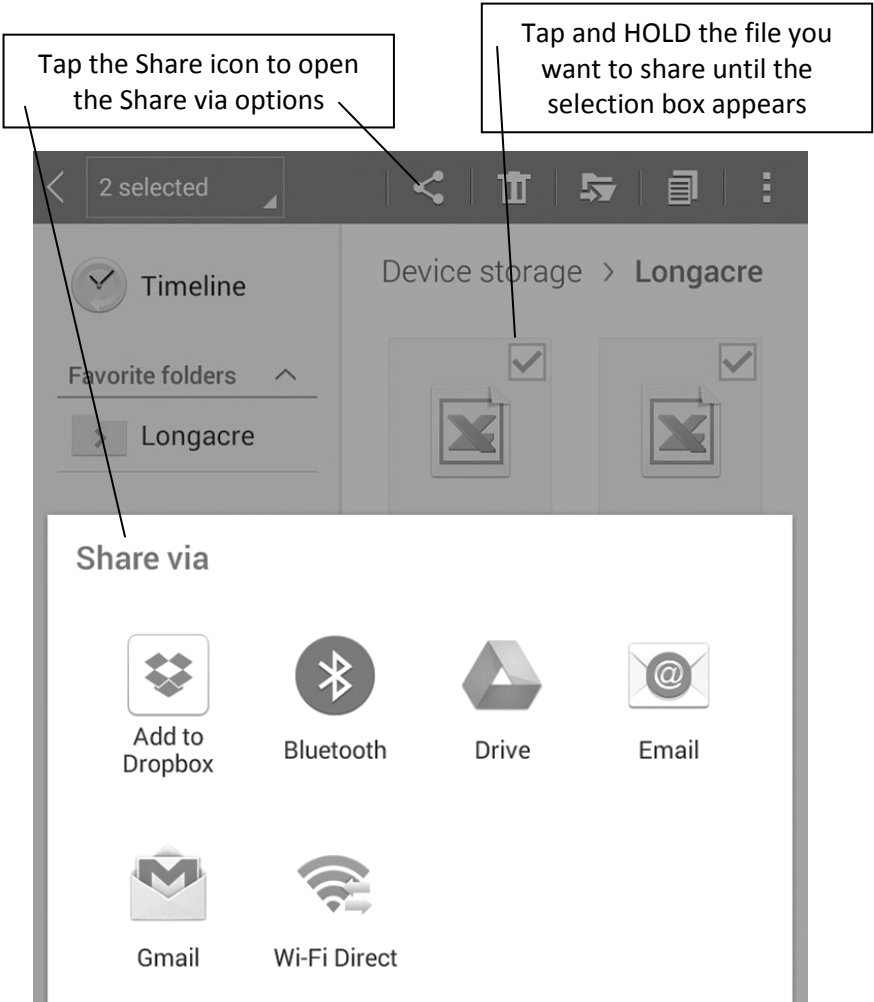
‘Car’ icon on screen: There are 4 standard choices: Stock Car, Indy/F1, Modified and Kart. You can also personalize your tablet and have a picture of your car as the icon. Details are included in this manual for a Custom Car Icon or call the factory.

Optional Backgrounds: (DX3 only) Choose between the Standard Red or Industrial Black backgrounds for the main application screen. The app will close automatically when changing skins. Just re-launch the app and the new skin will be displayed and will stay until you choose to change it again.

- **Save to File / Save Current:** Tap **Save to File** to copy all your wheel weights, partial %’s and any notes you have entered for all 50 memory locations (plus your live data) to file. Tap **Save Current** to copy your current live data or Memory location only to file. Files have been saved when you hear the sound of tapping the buttons.

The application will create (or overwrite) the comma delimited (.csv) file **LongacreWeightDump.csv** in the Longacre folder on the tablet when you tap **Save to File**. It will create a file using the Memory location number and name in the Longacre folder when you tap **Save Current**. If the same file name already exists it will overwrite it.

Tap the Longacre folder icon on the Home screen of the tablet (or browse to the Longacre folder using the My Files or other file management app) to locate the saved files. If you have WiFi access you can easily email the files. Tap and HOLD the file you want to select until a box with a check mark appears. You can then select additional files if desired. Tap the Share icon at the top to open the Share Via options.



To download the files to a PC connect the tablet to your PC with a USB connector (at the bottom of the tablet where the charger connects). Tablet must be powered on.

On the PC, browse to your **'Computer'** or **'My Computer'** folder. You will see **'SM T230NU'** or similar designation for the tablet. Double click on this to open and then double click on **Tablet**. Look for a folder named **'Longacre'** and open it. Drag any of the .csv files that you want to save to your PC Desktop or other folder.

Misc. (but important) Notes

Here are some messages that may come up from time to time:

The app wants to turn Bluetooth® on	
YES	NO

The app wants to pair the device	
YES	NO

Tablet battery is low – continue?	
YES	NO

The wording may vary slightly. Always answer YES. The wrong choice will affect your system’s operation. This is part of the Android® OS Security System. They should not come up often. If the tablet battery is low connect the charger.

General Precautions: • Do not drop the tablet or pads (they have electronics). • Keep the entire system clean and dry. • Do not expose to excess heat or cold: 32° F (0° C) to 120° F (38° C). • Keep the tablet away from strong magnetic fields (caster camber gauge?). • Do not overload the pads (confirm capacity). • Clean the tablet as needed with a soft cloth only. Use no cleaners or chemicals. • Be cautious if you are doing anything in the Settings section of the tablet OS (not part of the app). If you turn Bluetooth function off or un-pair the control box the scales will not operate. Restoration is easy.

A screen saver has been pre-installed on the tablet display. This helps protect it from scratches. Replace when needed. (When you first turn on the tablet the model number will show so you can get the correct replacement.) Using the included stylus helps this also.

Wireless range: This system uses the Bluetooth® wireless protocol. It operates at a power level that does not require an FCC license. The practical operating range is from 30’ to as much as 200’, depending on conditions. The best range is indoors as the signals bounce off walls. The shortest range is out in the open with nothing else around. Other cars around, machinery, shelving, etc. can affect range also but it should never be less than about 30’.

To shut system down: Tablet – Push & HOLD ON for 3 seconds. Display changes. Tap ‘Power Off’ and then tap ‘OK’. **If you don’t do this the tablet battery may be low the next time.**

Leave WiFi off unless you specifically need it: This choice is accessed in the Settings section of the tablet OS (not the app). If WiFi is left on the tablet battery life will be less before needing to be charged. Also if you are in a WiFi hotspot and turn the tablet on it may attempt to upgrade the Android® operating system to the latest version. This is an Android® function.

You can allow the tablet to upgrade the operating system if you wish. In the Settings section turn WiFi on. NOTE: When you update the OS you may need to re-enter your SysID security number and/or re-pair the control box to the tablet. If your system does not function after the update (**NO DATA**) see the enclosed instructions for re-entering the SysID. This is simple and takes less than 1 minute. When the OS update is done we recommend that you turn WiFi off. This system operates on Bluetooth® and does not need WiFi in regular use.

Install Custom Car Display Icon

You can have a picture of YOUR car as the display icon: First send us a high quality, high resolution picture of your car in a jpg or other image format. An overhead shot is needed from straight above the car. This will require shooting from a second story (or even a tree). Shots taken from a ladder may not look as expected.

Connect the tablet to your PC with a USB connector (at the bottom of the tablet where the charger connects). Tablet must be powered on. Don't open the app at this time.

On the PC, browse to your 'Computer' or 'My Computer' folder. You will see 'SM T210' or similar designation for the tablet. Double click on this to open and then double click on **Tablet**.

Look for a folder named '**Longacre**'. If there is not one, right click to create one and name it **Longacre**.

On your PC save the **customcar.png** icon file we email to you to your **Desktop** or **Documents** folder and then drag and drop it into the **Longacre** folder on the tablet.

Disconnect the USB cable and launch your **COMPUTERSCALES XLi** app.

Swipe to the setup page, scroll down to **Car On Display** and select **Custom**. Swipe back to the main screen and your custom car icon will appear and function just like the others. It will stay until you change it.

Simple Troubleshooting


Be sure the Bluetooth® icon shows before launching the app.

If you launch the app **COMPUTERSCALES XLI™** before Bluetooth® is running (shown by icon at top of device screen) Android® will ask you, “**Do you want to connect to this device?**” Even if you answer “**Yes**” it may not connect, in which case you may need to re-boot the app and/or the control box.



Bluetooth® icon


Must be on before launching app. This takes about 4 seconds after the Home page appears when powering up the tablet.

When you first turn on your system and launch the app if you have any connection problems (**NO DATA** on display and the control box LED is not flashing) first reboot the control box . If this does not correct the issue reboot the app (off, then back on). Close the app with the  button and restart (no need to shut down the tablet completely – just the app). This is rare.

In operation if you lose the connection (**NO DATA** on display) reboot the control box. This can happen if you get out of range with the tablet, then come back in range. On rare occasions the wireless link will not immediately re-establish and rebooting the control box resets the connection. This only takes a few seconds. See main instructions for battery or power issues.

Troubleshooting Connection: ‘NO DATA’ indicates the tablet is not receiving weights from the pad control box. First be sure the control box is on, indicated by a green LED. If green LED is steady – not flashing – there is no communication.

Possible solutions:

- First reboot the control box (turn off and back on).
- If it doesn’t start working in 5-10 seconds try rebooting the app. Do this by tapping  at the bottom right of the display. The Home Page comes up. Tap the app icon to re-launch the app.
- If this doesn’t work (very rare) power down the tablet completely, shut off the control box and start over. Even this takes less than 30 seconds.

Coming out of 'Sleep' mode: If your tablet has been in 'Sleep' mode for more than an hour it may be necessary to reboot the control box to reconnect. This is an Android® security function. If you get '**NO DATA**' when you take the tablet out of sleep simply turn off the control box, then right back on. This will reset the wireless connection and restart communication. This only takes a few seconds.

Shows 'NO DATA' and control box LED is flashing: If you have updated your Android® OS and now the system doesn't work re-enter the **SysID** on the setup page. See instructions on page 17. Updating the OS can sometimes delete the **SysID**. The control box is communicating with the tablet but not the app.

'Pairing' the control box with the tablet: On rare occurrences the connection between the control box and the tablet – 'Pairing' – will get broken. See instructions on page 20 for re-pairing. This is simple and takes less than 2 minutes. This will be necessary if you change devices – from the tablet to your Smartphone, for example.

Tablet battery: If your tablet will not turn on and you have had the charger connected, try another charger and/or USB cable. Most chargers with USB connections put out the same voltage and can be interchanged. If the charger is functioning you can tap the ON button and a battery image will appear and show the charge state. If it does not, the charger is probably not functioning and the tablet will not operate.

Service: If service is needed please call or email first for an RMA #. Be sure to send the control box and the tablet. Don't send the pads unless requested.

Install (or re-install) SysID (System ID - Secret Code)

Your SysID

Your Serial Number

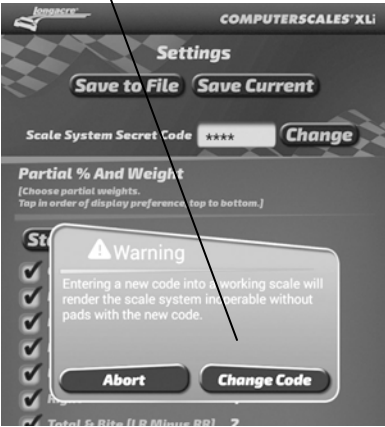
1

From the main display swipe right to left to the Setup Screen – below. Tap on **CHANGE**



2

Warning message comes up. Tap **Change Code**. Display changes and keyboard appears at the bottom.



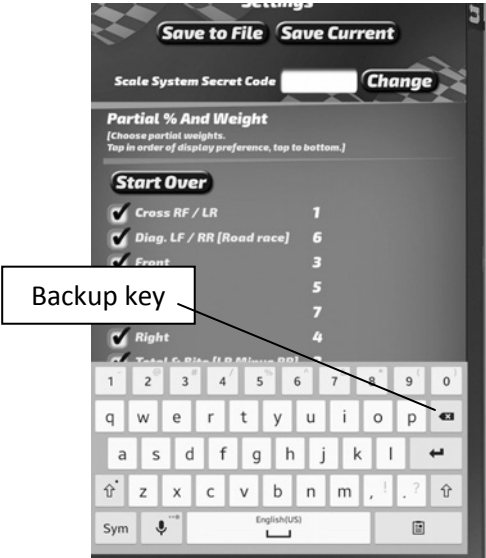
3

Tap on white area of box to right of **** (current SysID – hidden). Blue arrow appears below cursor and ****



4

Tap Backup key to erase current SysID. Blue arrow shows where the cursor is. All **** must be gone.



5

Enter new SysID on keyboard – 4 characters (may be all numbers or letters, not case sensitive). After you enter the last number or character you are done. Swipe back to the main screen.





In the unlikely event that your system still does not function please check to see if Bluetooth® is still paired. If it is you may have a hardware problem. Please note if the control box LED is flashing or steady and contact the factory.

Pairing the Control Box with the Tablet

The control box and tablet are connected wirelessly via Bluetooth®. Occasionally the pairing between the two could be lost and you will need to re-pair them. This is a very simple process that takes less than a minute.

PREPARE: Close the COMPUTERSCALES XLI app (if open) and turn the control box off (if on).

START: Tap the **Settings** icon  to get to the settings page, tap Connections at the very top left, then tap the **Bluetooth**® icon (be sure **Bluetooth**® is on – slide green bar to the right ).

At the upper right in **MY DEVICE** tap the empty box on the right. This temporarily allows connection to unpaired devices – your pad control box. You have 2 minutes to complete the pairing process (plenty of time). See the countdown timer. If you do not get the control box paired in this time you will need to start over.

Once you tap this box and the timer has started, press and HOLD the control box **ON** button. The LED will turn red. At this point release the ON button and momentarily push it again. The LED will go out, and then come back on steady green. In a few seconds the tablet will ‘whistle’ and a message will come up **“DO YOU WANT TO PAIR WITH THIS DEVICE?”** Tap **OK**. Now open the COMPUTERSCALES XLI app. Within 5-10 seconds the connection will be made and your weights should display.

If it still does not function – display weights – your security system ID (SysID) may have been corrupted. See **Enter SysID** section above and re-enter it. This is very quick and simple.

Warranty Policy on Hybrid Scale Systems

Tablets are warrantied for a period of 1 year and the control box and pads for 2 years from the date of retail/consumer sale (not from the date of manufacturer's sale to the dealer as other scale manufacturers do). We will handle any tablet manufacturer's warranty for you since the repaired or replaced tablet needs to be configured and linked to the pad control box (remember – the tablet is part of an interconnected system).

For warranty or non-warranty work please **return the tablet and control box**. Please do not send partial systems as we will not be able to complete the service properly. It is not necessary to send the pad(s). This helps keep shipping costs down. All our load cells are matched. There are rare exceptions to this. If you suspect that the actual load cell is causing problems please contact the factory service department for instructions on how to check and confirm this.

Please pack everything very carefully so they are not damaged in transit, especially the tablet display. It is best to leave it in the protective case. We cannot warranty a tablet and/or control box that have been damaged in transit.

To return a system for service please contact the factory for an RMA tracking number. This helps us get your service done as quickly and efficiently as possible. **PLEASE DO NOT SEND SYSTEMS BACK WITHOUT THIS RMA NUMBER.** It should be clearly marked on the outside of the box and include a quick note inside with your name, phone number, and the RMA number again.

If you choose to send the entire system with pads there will be an additional charge plus additional return freight. If you send the tablet and control box only for warranty service and need them returned faster than ground service we ask that you pay only the difference in freight cost.

IMPORTANT NOTE: The tablets included are fully functional tablets using the Android® OS. They will support many other apps besides the one we supply. However there is always a potential for conflict between apps **over which we have no control**. We will warranty and support both hardware and software (our app) on these systems ONLY if no other app or apps have been installed. If you have trouble after installing another app we urge you to delete that new app first to see if an app conflict is the problem. We cannot warranty that this system will function properly with any other apps.

The tablet included is sold and will be supported to run our **COMPUTERSCALES XLi™** app and any other apps that we supply. Sorry but we cannot offer general tablet tech support not related to our app(s). We have installed the tablet manufacturer's use and service guide as a PDF. This is a very complete operations reference and should answer any general tablet questions.