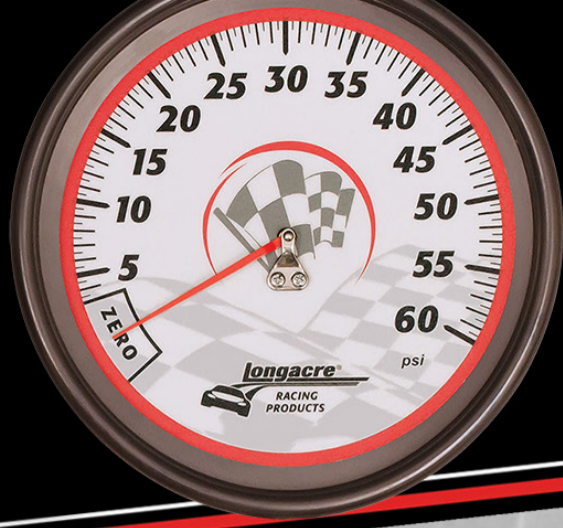
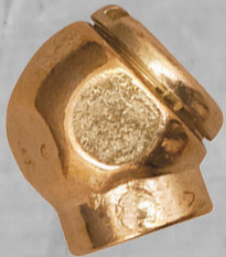


HOW TO CHOOSE YOUR TIRE GAUGE

Things to consider when choosing a quality tire pressure gauge



BALL CHUCK



SWIVEL FITTING

ANGLE CHUCK

CHUCKS

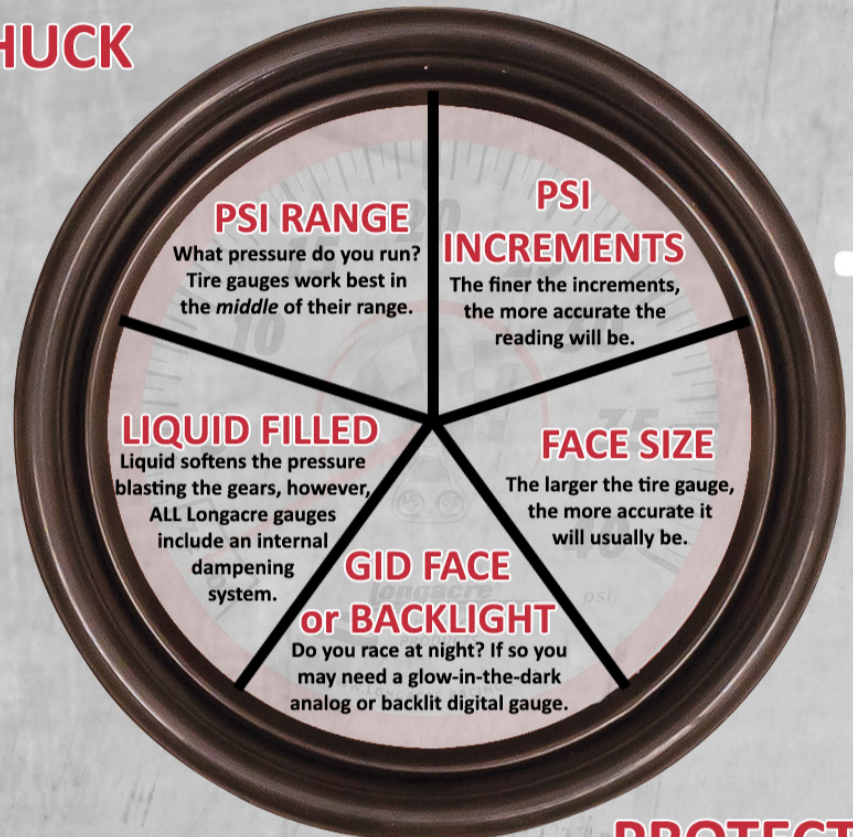
Longacre installs a swivel style angle tire chuck on all of our tire pressure gauges.

A swivel chuck is very nice in case the hose gets twisted you can correct it.

ALL Longacre gauges also include an alternate ball chuck. It is easily swapped out if you prefer it to the angle chuck.

HOSE LENGTH

Longacre has two different hose lengths available. 14" and 17" for those hard to reach areas.



PSI RANGE

What pressure do you run? Tire gauges work best in the middle of their range.

PSI INCREMENTS

The finer the increments, the more accurate the reading will be.

LIQUID FILLED

Liquid softens the pressure blasting the gears, however, ALL Longacre gauges include an internal dampening system.

FACE SIZE

The larger the tire gauge, the more accurate it will usually be.

GID FACE

or BACKLIGHT

Do you race at night? If so you may need a glow-in-the-dark analog or backlit digital gauge.

HOLDS PRESSURE

Do you need a gauge that holds the pressure reading on the face when you pull the chuck off the tire?

PROTECTIVE BUMPER

Tire gauges are precision instruments that can lose accuracy if they take too much impact when getting bounced around.

ALL Longacre gauges come with a protective bumper on the gauge head.

DIGITAL vs ANALOG



Digital gauges can be easier to read and set your tire pressures to .1 to .2 of a pound.



Analog gauges are a great unit of measurement for the money. Normally, the bigger the face size, the more accurate the gauge is.

BLEEDS AIR

A bleed button lets you fill the tire and then bleed off air to set the exact tire pressures you need in your tires.

Multiple bleed buttons allow you to reach that desired PSI more quickly.

ALL Longacre gauges come with one or more bleed buttons.

MEMORY NEEDED

If you want to be able to store your pressures or see all 4 of them at the same time you might want to consider the Ultimate Tire Pressure Gauge.



CASE INCLUDED?

Protect your gauge and keep it accurate by storing it in a lined case. Gauges that are bounced around in your tool box or dropped will lose their accuracy.





Tech

HOW TO CHOOSE YOUR TIRE GAUGE

THINGS TO THINK ABOUT WHEN CHOOSING A QUALITY TIRE PRESSURE GAUGE

PSI Range - The most important decision is to get a gauge that works within the pressure range of the tires that you will be using the gauge on. For example, if you run 30 psi in your tires then you should get a 60 psi gauge. If you run 15 psi then you should get a 30 psi gauge. All tire gauges work best in the *middle* of their range.

PSI Increments - PSI increments are another thing to consider when choosing the correct gauge. The finer the increments, the more accurate reading you will get.

Digital - Digital gauges are great, however the cheaper the sensor the less accurate the gauge is. With these gauges you get what you pay for.

Analog - Analog gauges are a great unit of measurement for the money. Normally, the bigger the face size the better the gauge is.

Face Size - The larger the tire gauge the more accurate it is, in most cases.

Hose Length - Longacre has 2 different hose lengths available, 14" and 17" for those hard to reach areas.

Chucks - Longacre installs a swivel style angle tire chuck on all of our tire pressure gauges. A swivel chuck is a very nice in case the hose gets twisted up you can correct it. Longacre also includes an alternate ball chuck with all of our tire gauges. It is easily swapped out if you prefer it to the angle chuck.

Holds Pressure - Do you need a gauge that when you check the pressure you can still read it when you pull it off the tire?

Bleeds Air - All Longacre tire gauges will allow you to bleed off air when checking the tire pressure.

Protective Bumper - All Longacre tire pressure gauges have a protective bumper.



Tech

GID Face or Backlight - Do you race at night or in a poorly lit pit area? If so maybe you need a GID (glow-in-the-dark) analog gauge or even maybe a backlit digital gauge.

Liquid Filled - Here is the scoop on liquid filled tire gauges. Liquid is used to soften the blow of air pressure when it enters the gauge. Just think, if you have 30 pounds of pressure then you have 30 pounds of pressure blasting the gears inside the gauge. That abrupt movement inside the gauge is what wears them out. However **All** Longacre tire gauges have a dampening system built into the gauge head that softens the blow of air pressure, therefore helping to protect the gears.

Case Included - The most important way to keep your gauge accurate is to keep it in a foam lined case. When your gauge is getting bounced around in your tool box while hauling it to the track or getting dropped, it will lose its accuracy. Keep your gauge in a case at all times when possible.