

Longacre®



Digital Tire Gauges

#50320, 53021, 53003

0-60 psi

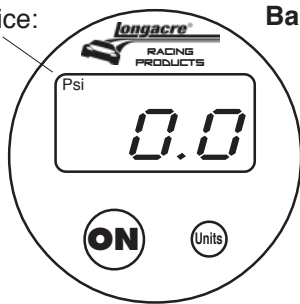
Push **ON** to turn gauge on. Gauge shuts off automatically after 3 minutes of no use (no pressure). Gauge auto-zeros at turn-on. If zeroing is ever needed push **On** and hold for 5 seconds. Back lite is on whenever gauge is on.

- Change batteries when the battery icon shows in the upper right corner of the display. See below right. Replace with 2 quality “AAA” batteries. Access is on the back. Install w. correct polarity.

To convert to metric - Bar, Kg/cm, or kPa:

- Turn gauge on. Hold **Units** button until Psi at top of display flashes. Release **Units**, then push **Units** once to move to BAR, then Kg/cm, or kPa. After 3 seconds normal function will resume.

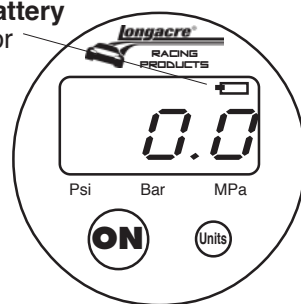
Units choice:
Psi here



Bar here



Low Battery
indicator



**Reads
to .1 psi**

0-60 psi