



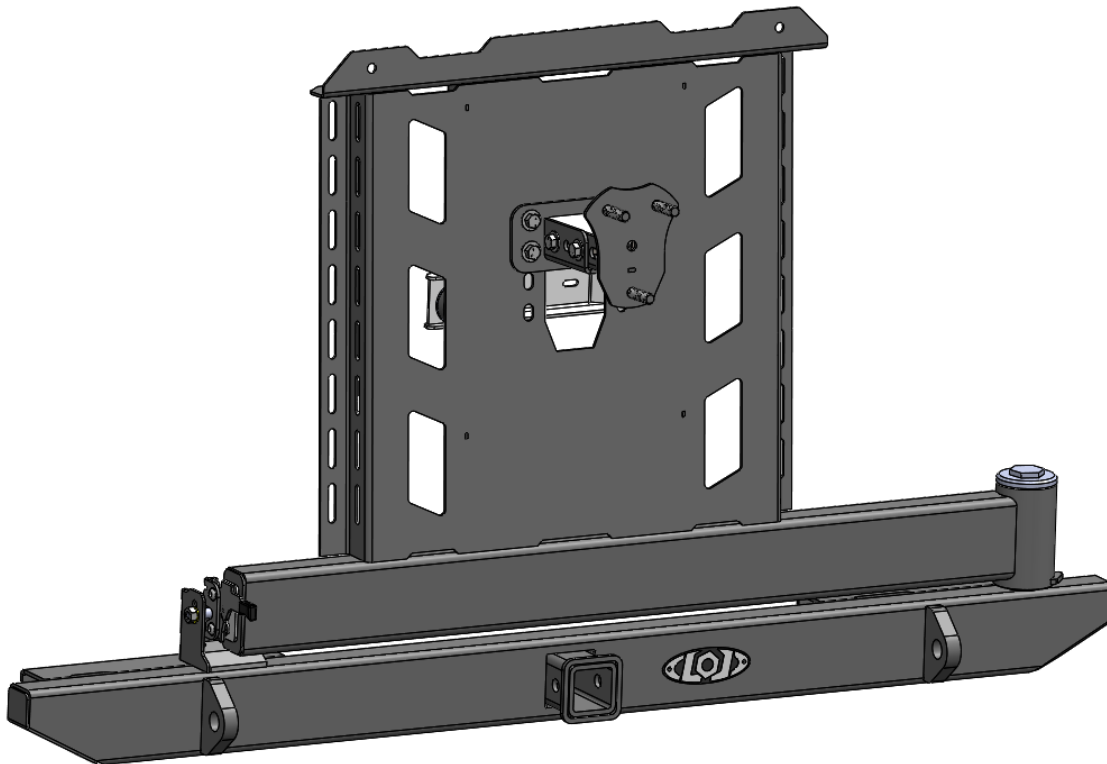
DESTROYER - E SERIES



JEEP YJ/TJ/LJ DESTROYER  
E SERIES TIRE CARRIER

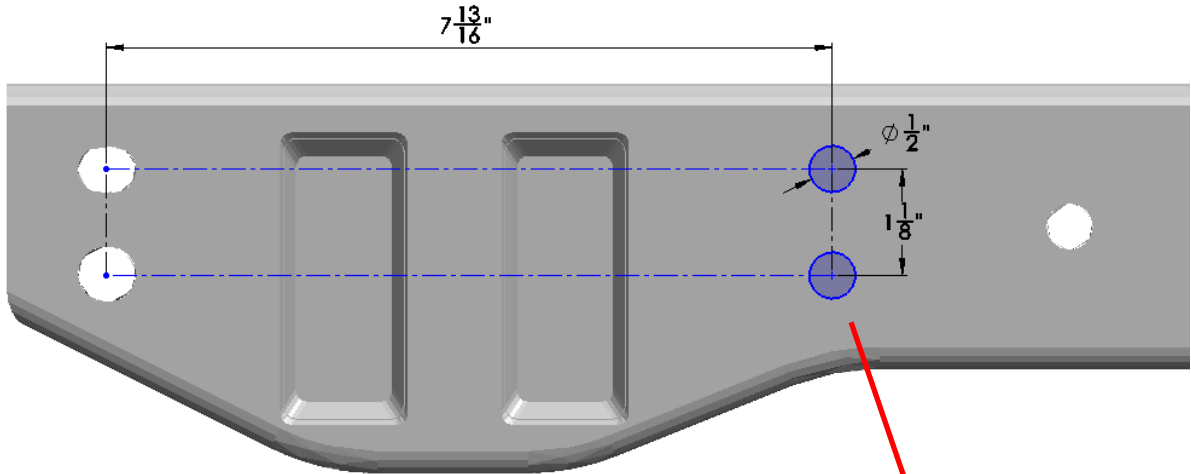


**\*VERIFY YOU HAVE ALL THE COMPONENTS BEFORE STARTING THE INSTALLATION. REFER TO THE ENGINEERING DRAWINGS AT THE END OF THIS DOCUMENT FOR A COMPLETE PARTS LIST\***



Start by removing your rear bumper. You will need to drill two mounting holes on each side in the rear cross member. This step is only needed on 1998 and newer TJ's. Earlier TJ's and YJ's already have these holes in place.

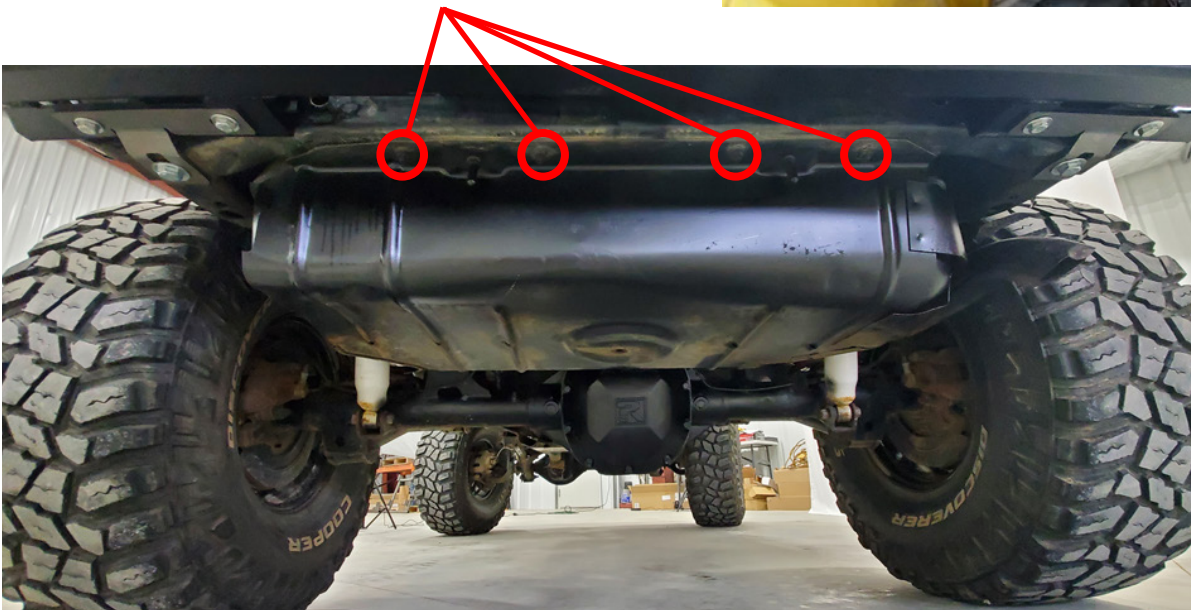
Follow the diagram shown for drilling 1/2" diameter mounting holes 7-13/16" from the outside mounting holes.



To improve your drilling accuracy it is a good idea to start small bit and get progressively larger or use a step drill. Be careful when you punch thru as to not hit the gas tank behind the cross member.



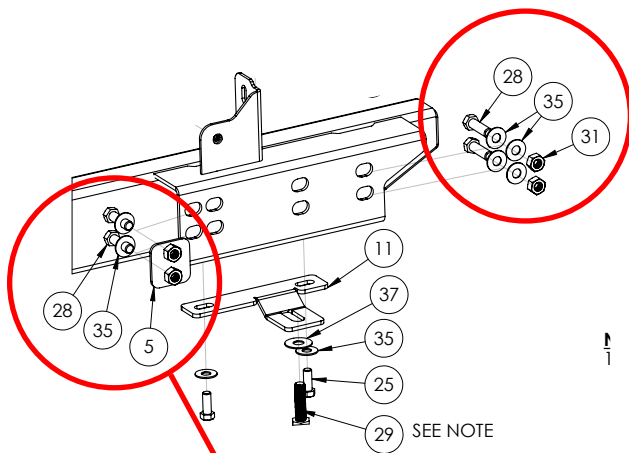
Next lower the gas tank skid plate by removing the 4 screws shown below. This will allow the skid plate to drop a few inches to gain access behind the rear cross member.



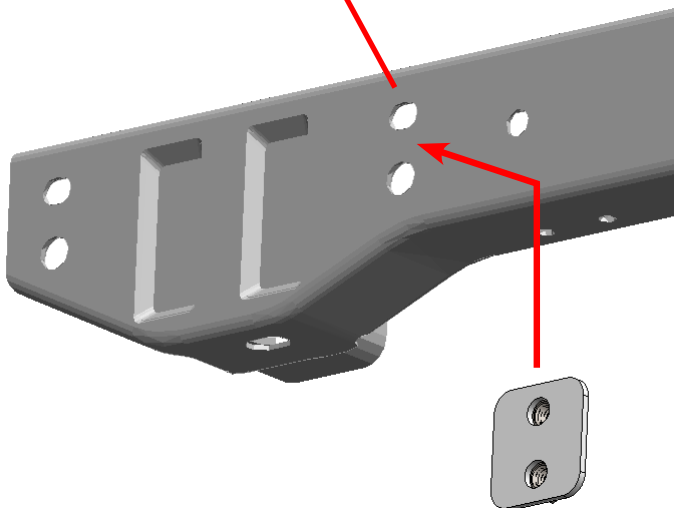
Use a floor jack or a helper to hold the rear bumper up to the rear cross member.



Install the 7/16" Hex Bolts, Nuts and Washers into the two outside mounting holes first. Leave these slightly loose while you finish the bumper installation

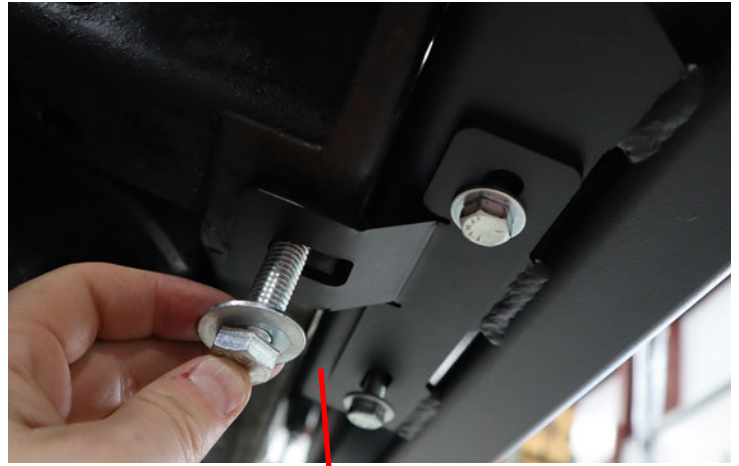


Install the 7/16" Hex Bolts, Washers and Frame Backing Plate as shown into the holes that you drilled into the rear Cross Member. With the gas tank skid plate lowered as shown, you will be able to insert the Frame Backing Plate behind the Cross Member. Leave these bolts loose while you finish the bumper installation.

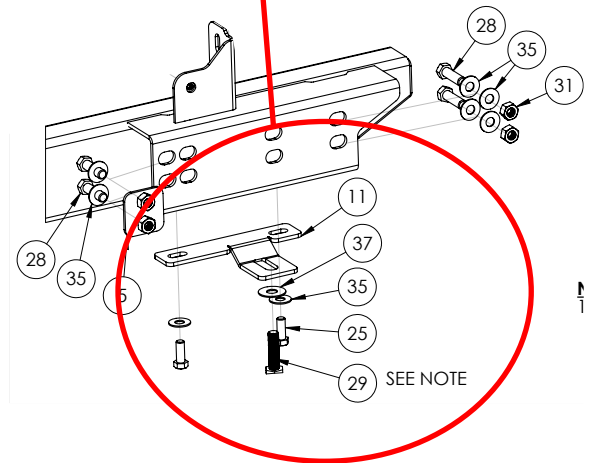


Install the Bottom Bracket as shown using 3/8" Hex Bolt and washers into the bumper, and the supplied metric M12 Hex bolt into the frame.

\*\*Note some older Jeeps may have a different threaded nut in frame. Be sure to check the thread before tightening. Do not force the bolt into the thread if you are not sure.\*\*



Once all the bolts are installed, make sure the bumper is centered on the Jeep and level side to side. Tighten all the mounting bolts securely. Once the bumper is secure reinstall the gas tank skid plate.

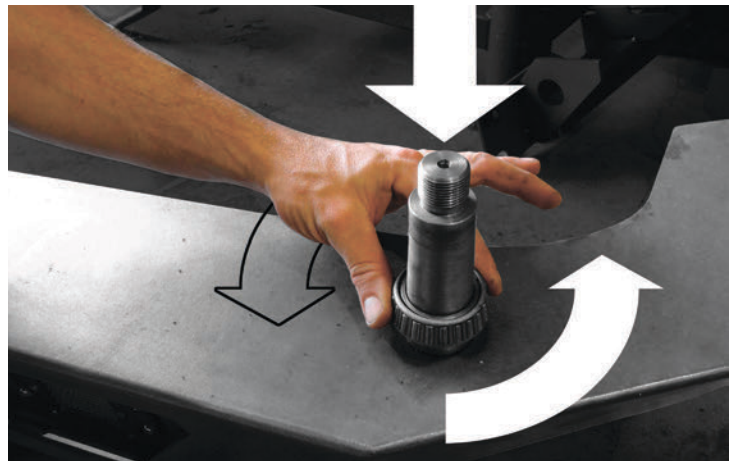


Place bottom bearing LM29749 onto the spindle, tapered side up. It should slide down all the way and spin freely. If not, you are using the wrong bearing.

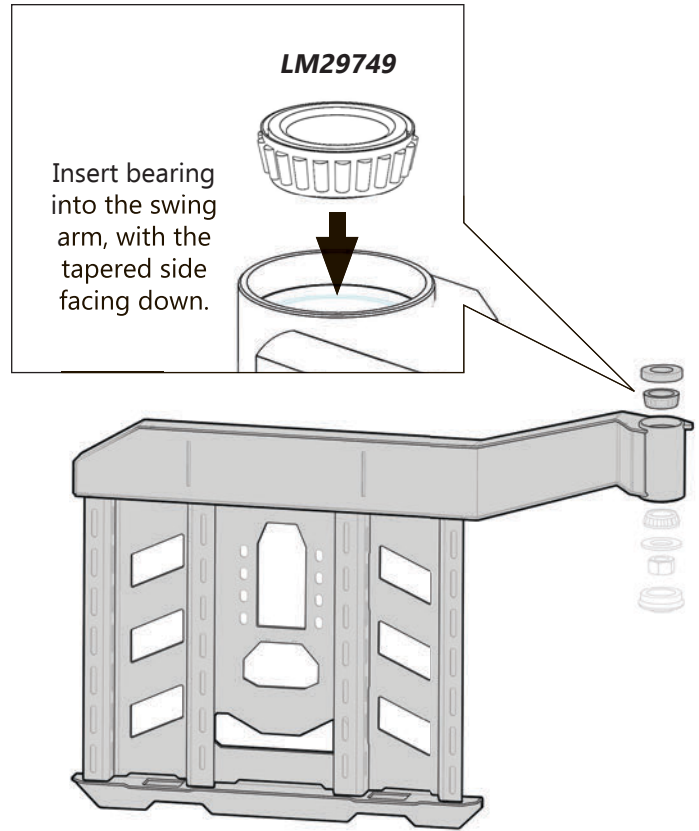
Make SURE to check the bearing number to be sure you have the correct one.

Be sure not to mix up the top and bottom bearings as this can damage the spindle and bearings.

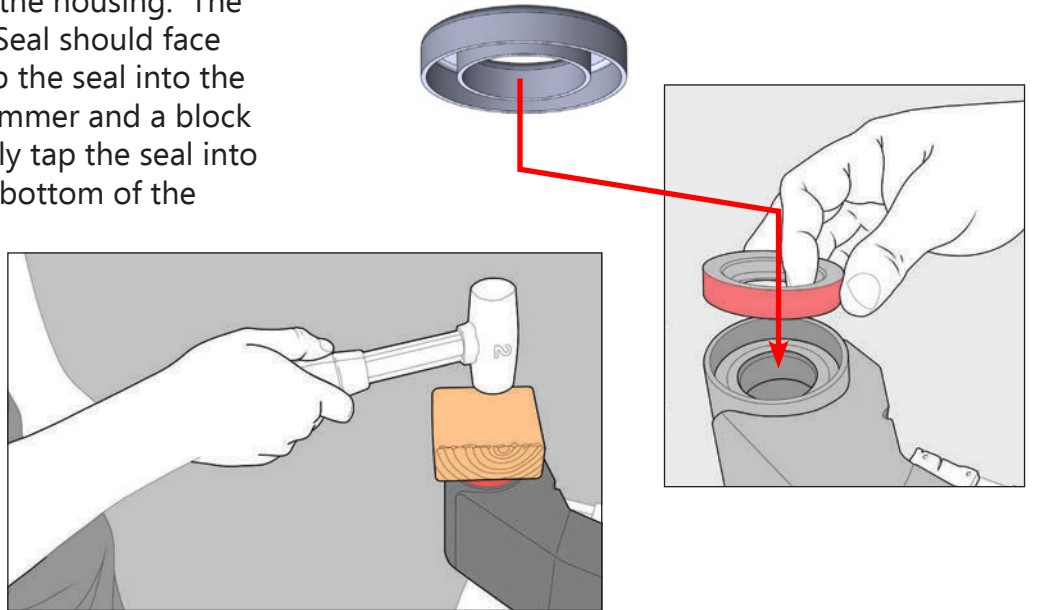
Pack the bearings using red wheel bearing grease using the palm method. You can find an explanation and video of this online.



Next place the tire carrier Swing Arm upside down as shown in the image below. Insert the greased bottom bearing LM29749 into the housing with the tapered side facing into the housing.

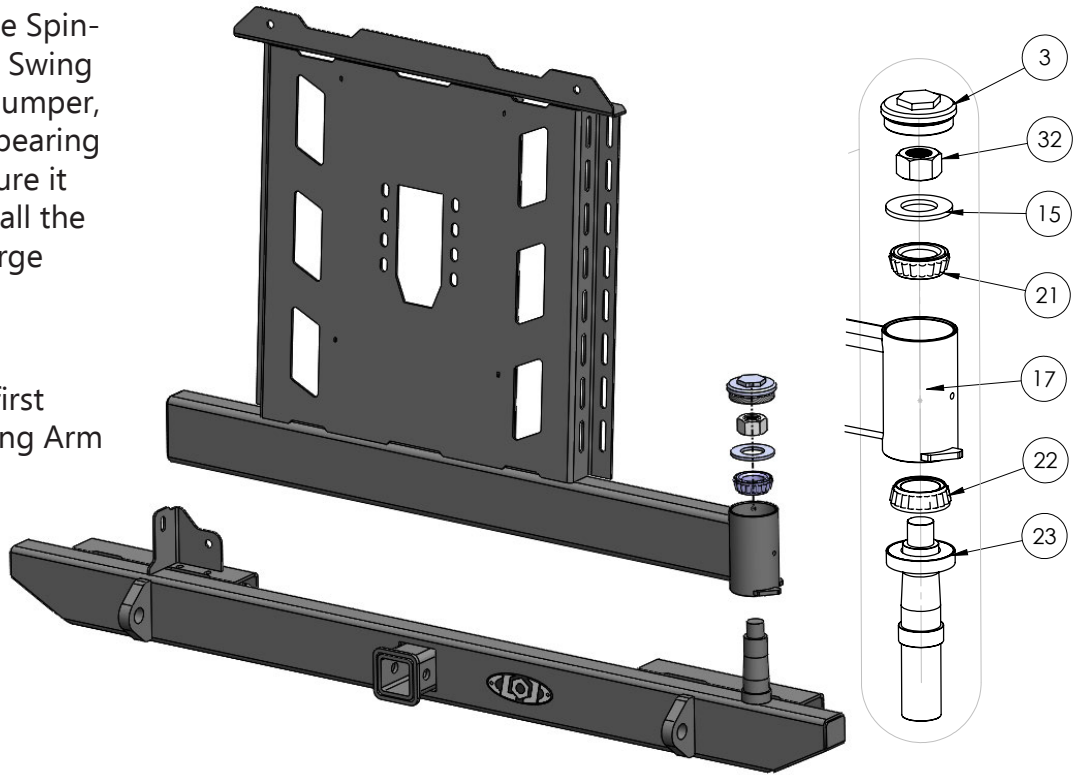


Place the Bearing Seal onto the housing. The cupped side of the Bearing Seal should face into the housing. Lightly tap the seal into the housing opening using a hammer and a block of wood. Be careful to evenly tap the seal into place until its flush with the bottom of the housing.



With a helper, slowly place the Swing Arm onto the Spindle. While holding the Swing Arm parallel with the bumper, place the top tapered bearing into the housing. Be sure it seats properly and install the Bearing Washer and large Nut.

Hand tighten the Nut first and make sure the Swing Arm operates smoothly.

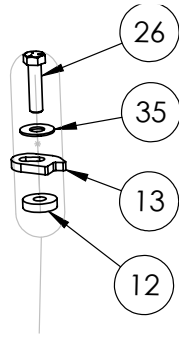


It is a good idea to add a little blue loctite to the Nut to prevent loosening. Slowly tighten the nut using a 1-1/2" Socket. Check the swing arm movement every 1/8th turn. The Swing Arm movement should not be restricted and should move freely. Overtightening could damage the bearings.

Install and tighten the Spindle Cap.

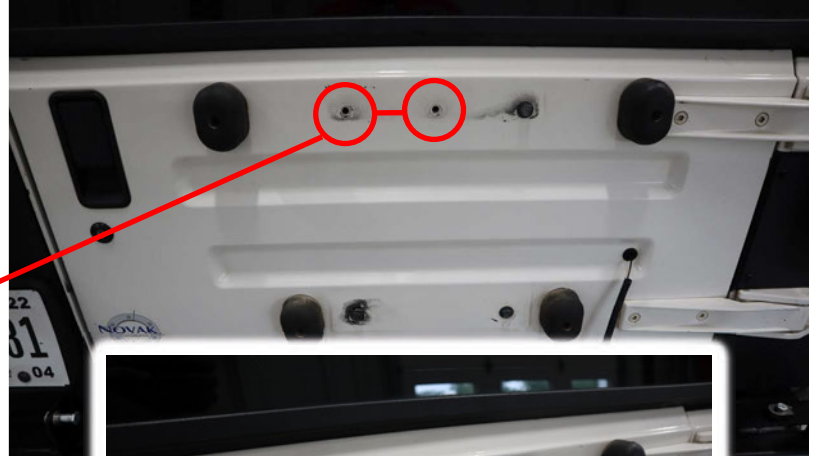
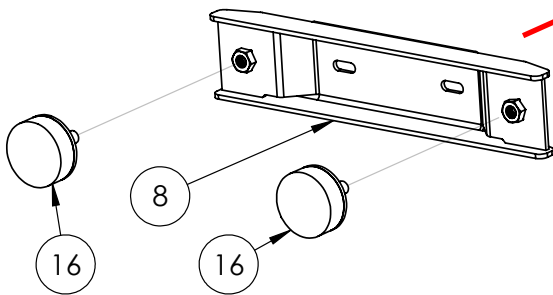


Install the tire carrier Swing Stop. Be sure to adjust it to allow the Swing Arm to open completely and allow full use of your tailgate and tighten securely. If you have accessories mounted on your tire carrier, you can adjust this slightly to help avoid the accessories hitting the Jeep when you open the Swing Arm.



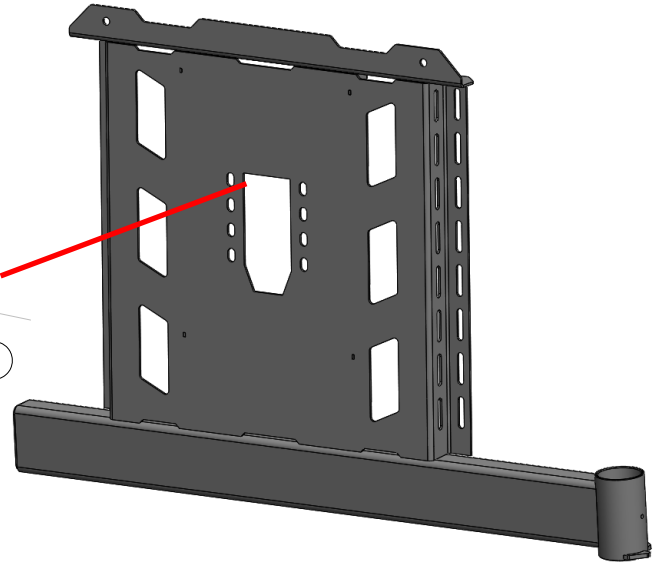
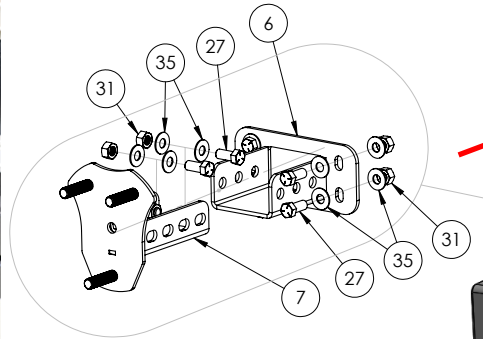
\*\*\*The Swing Stop is designed to allow the swing arm to rest in the open position when the Jeep is out of level. It is also a safety feature that will help stop the tire carrier Swing Arm from swinging around and damaging your Jeep. Repeatedly allowing the Swing Arm to swing around uncontrolled could damage the swing stop. Always open the Swing Arm and allow it to gently rest against the Swing Stop.\*\*\*

Install the Bumper Door Bracket and two large bumpers as shown onto the tailgate. Use the original mounting screws from your OEM tire carrier. Install into the two holes closest to the driver side.



The two large bumpers should line up with the ribs on the back of the tire carrier Swing Arm. Adjust the Bumper Door Bracket as needed and tighten securely.

Install the Tire Mount and Tire Mount Bracket onto the Swing Arm using 7/16" Hex Bolts, Nuts and Washers. You will want to mount this in the lowest position that will work for your size tire. Measure the radius of your tire then transfer that measurement up from the top of the bumper to find the optimal position for your Tire Mount.



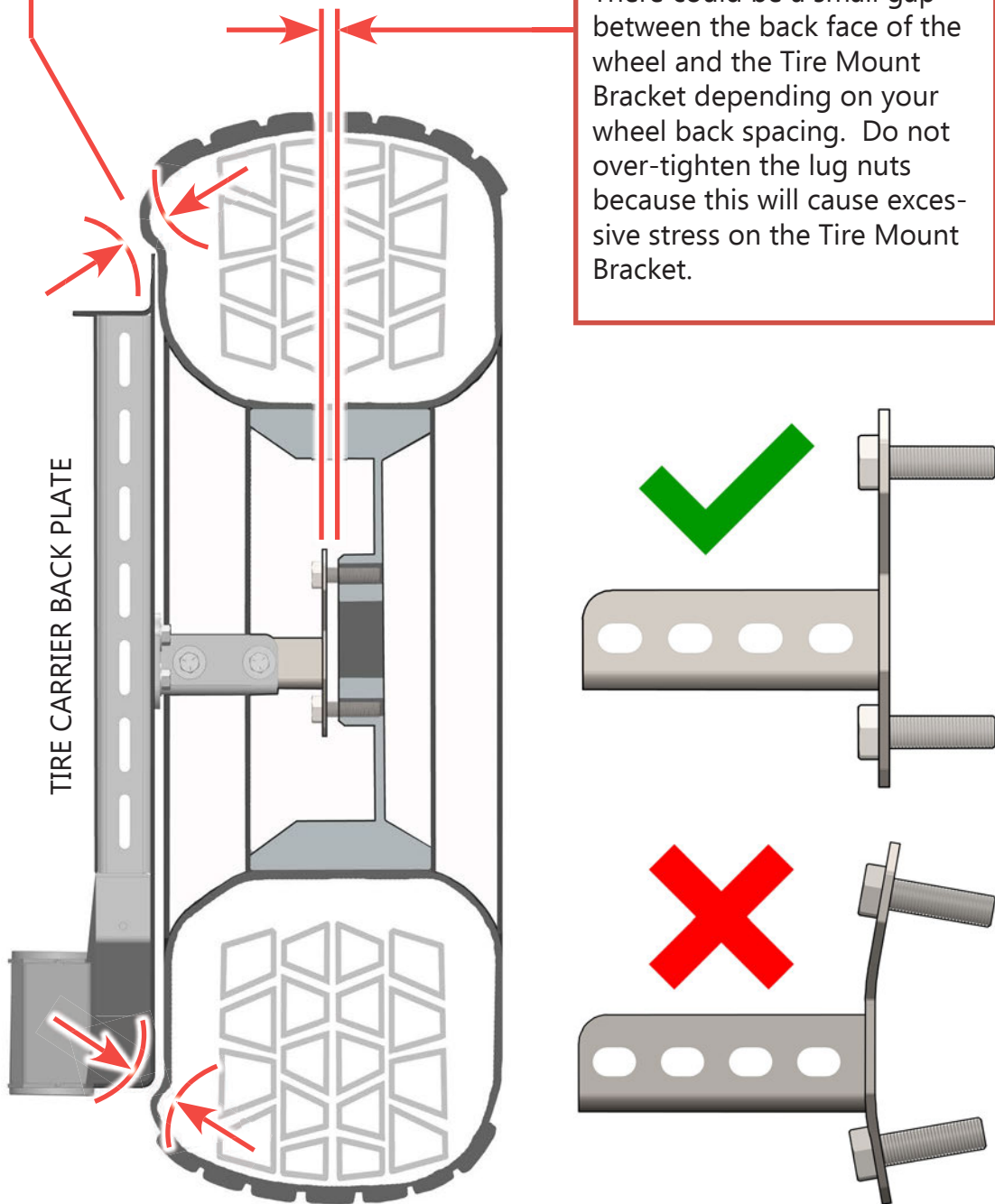
With the tire mounted, there could be a small gap between the back of the wheel and the Tire Mount Plate approximately 1/4" - 1/2". This is ok because the tire is pressed against the Tire Carrier Back Plate. The tire should be tight against the back plate and not able to wiggle side to side or up and down. This keeps the tire from shaking on the tire carrier.





Your tire should squeeze against the back plate of the tire carrier at the top and the bottom.

There could be a small gap between the back face of the wheel and the Tire Mount Bracket depending on your wheel back spacing. Do not over-tighten the lug nuts because this will cause excessive stress on the Tire Mount Bracket.

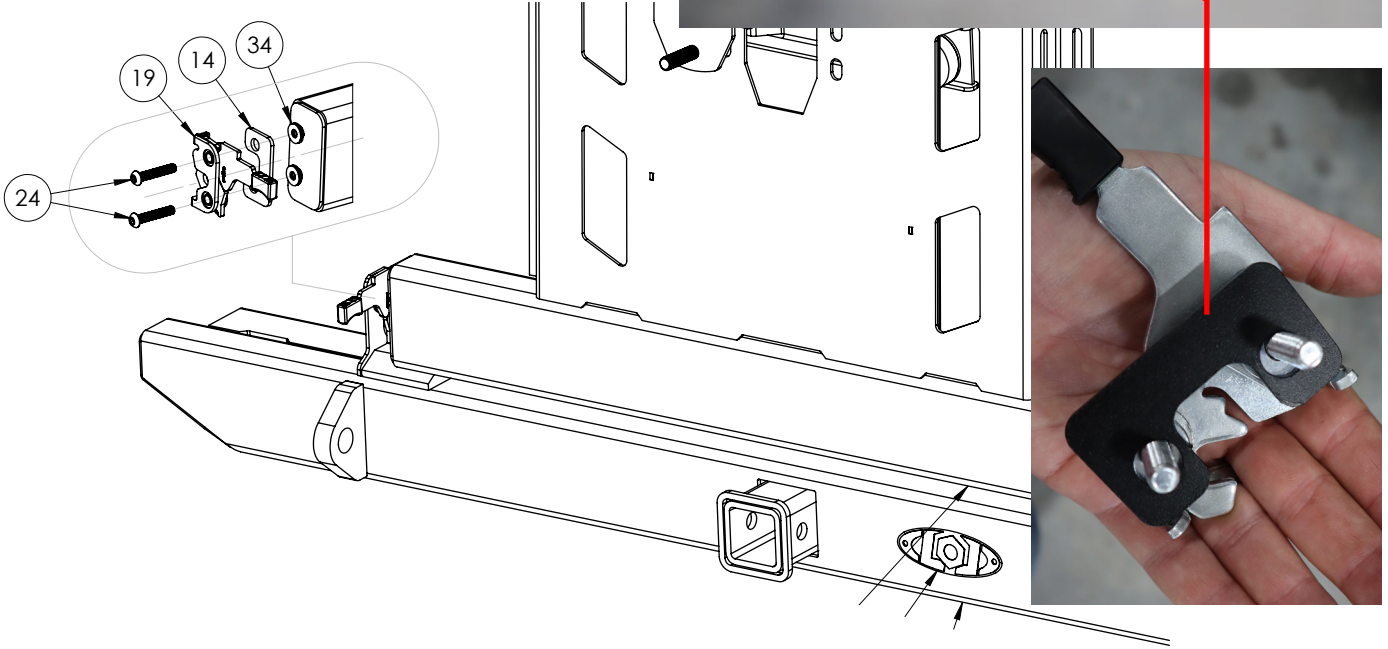
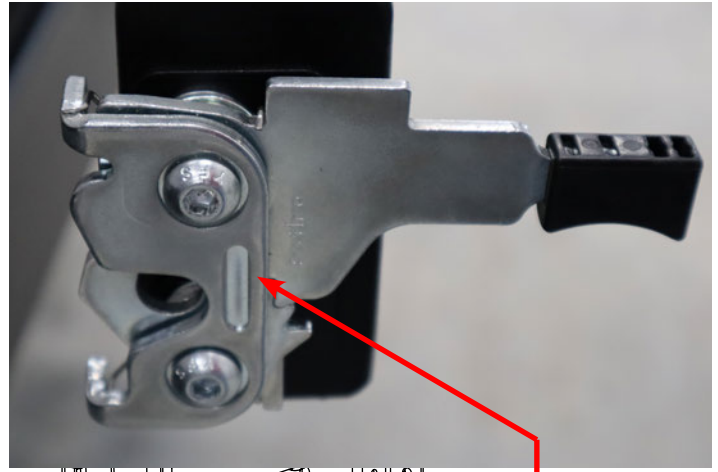


**WARNING!**

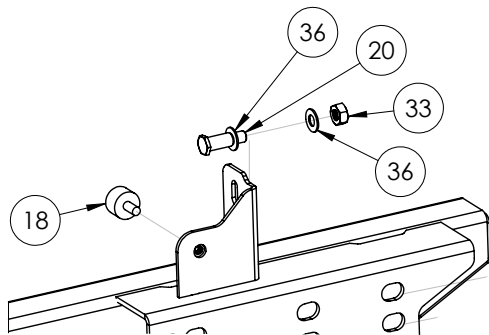
To prevent excessive tire shaking, your tire must be squeezed and making contact with the Tire Carrier Back Plate. Failure to do so could lead to Tire Bracket failure.

Install the Latch and Latch Spacer onto the end of the Swing Arm. Just snug them up because you may need to adjust it in the following steps.

The Latch Spacer is used to help position the latch relative to the Striker Bolt. Also included in the hardware are 1/4" Washers. These are placed between the Latch and the Swing Arm and can be used for fine adjustment if needed. Start by installing just the Latch and Latch Spacer for now.



Next install the Striker Bolt with Yellow Zinc plated Washers and Metric M10 Nut. Just snug these up for now until all adjustments are made. Also install the small rubber bumper as shown.

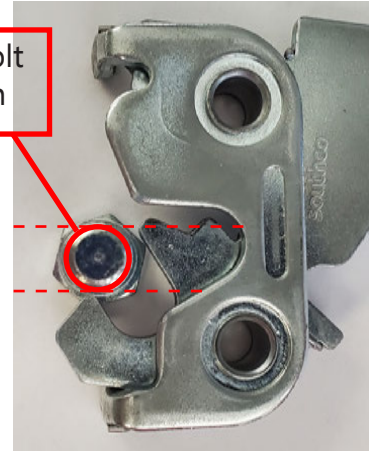


## \*\*\*LATCH ADJUSTMENT\*\*\*

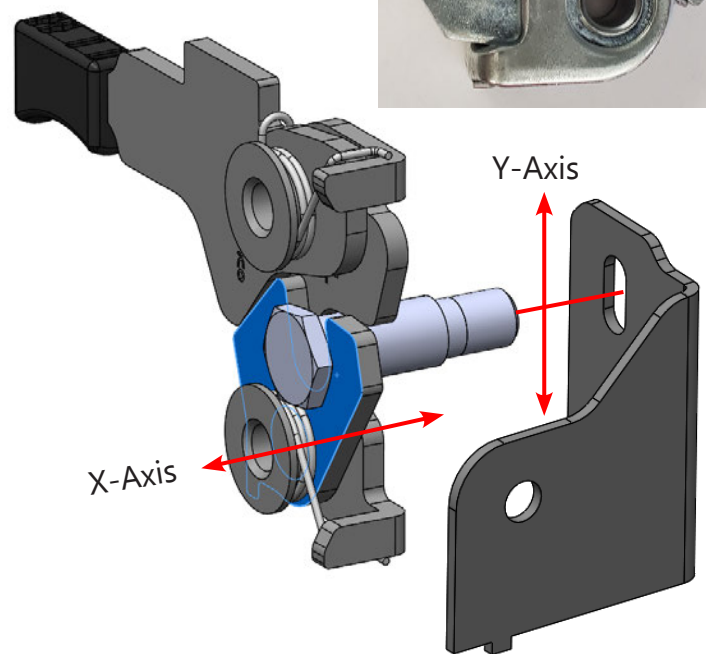
For smooth latch operation, be sure to adjust the latch with the tire carrier loaded with your spare tire and any other normal accessories you will run.

With the tire carrier loaded, adjust the position of the Striker Bolt up or down along the Y-Axis until it lines up with the Latch.

Position of Striker Bolt relative to the Latch



Next position the latch on the X-Axis using the Latch Spacer and/or the 1/4" washers to position the head of the Striker Bolt as close to the BLUE highlighted face without rubbing.



Make sure the two large rubber bumpers and the small bumper are threaded all the way in and out of the way of the Swing Arm while you adjust the Latch.

Test the operation of the latch by slowly closing the swing Arm until the latch engages. If needed add or remove spacers from the Latch mounting or adjust the Striker Bolt up or down until the Swing Arm closes easily.

Once adjusted, tighten the Latch and Striker Bolt Securely.



Always close the tire carrier Swing Arm by pushing on the arm near the Latch or the bottom of the tire. This helps to insure the Latch catches the Striker Bolt securely.

Closing the tire carrier Swing Arm from any other location may cause the Latch not to engage properly.

\*\*\*Always check to make sure the Latch is secure before driving.\*\*\*



With the swing arm closed, unthread the small rubber bumper until it touches the arm, then add another 1/2 to 1 full turn. This bumper should limit the Swing Arm movement and keep the Latch from rattling against the Striker Bolt.

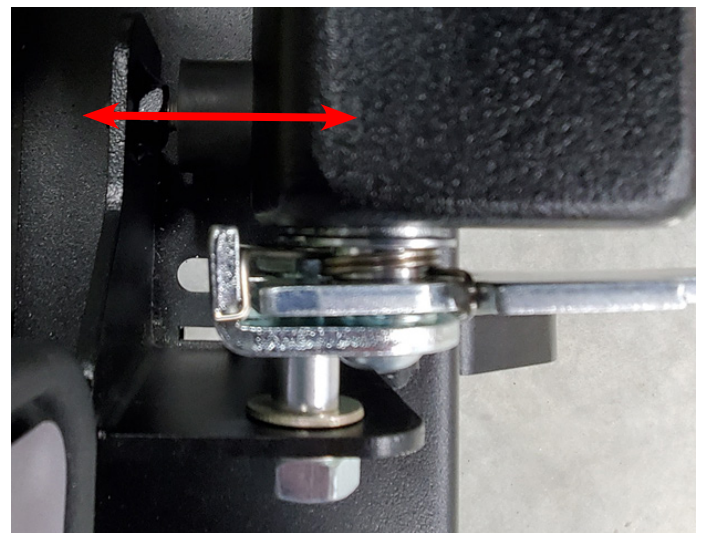
When adjusted correctly you should not have to slam the Swing Arm closed for the latch to operate correctly but you will need to use a little force.

You may need to adjust the latch if you remove accessories from your tire carrier or change tire size.

Next unthread the large rubber bumpers until they are touching the inside ribs of the Swing Arm, then add another 2 to 3 full turns. These bumpers will help limit Swing Arm movement and vibration.

When adjusted correctly you should not hear any rattles while shaking the loaded tire carrier.

You can use a little green or blue loctite on the bumper threads to keep them from changing position during daily use.



**Specifications:**

**Max Tire size:**  
 40" without accessory mounts  
 38" with accessory mounts

**Weight Limits:**  
 300 lbs Max combined weight  
 (includes tire, accessories and accessory mounts)

\*\*Only install one accessory per side. Do not double stack accessories\*\*

**NOT OK**  
 Only one accessory per side!

**300 LBS MAX.**

**\*\*Maintenance\*\***

**Tire Carrier & Swing Arm:**

- Once per year or as needed, add bearing grease to the Tire Carrier Swing Arm Spindle via the grease fitting on the side of the spindle. We suggest using a Lithium type automotive multi-purpose grease or wheel bearing grease (Red) that is water resistant.
- Periodically check and re-tighten all fasteners. Adjust the swing arm bumpers to ensure rattle free operation.
- Periodically check your Bumper and Tire Carrier and accessory mounts for scratches, dings, or rust spots which can happen over time or after heavy use. It is important to address these areas as soon as possible to prevent rust and corrosion from spreading. We recommend using Rustoleum® brand Black Semi-Gloss Protective Enamel (oil based). Apply using a foam brush by dabbing to match the powder coat texture.



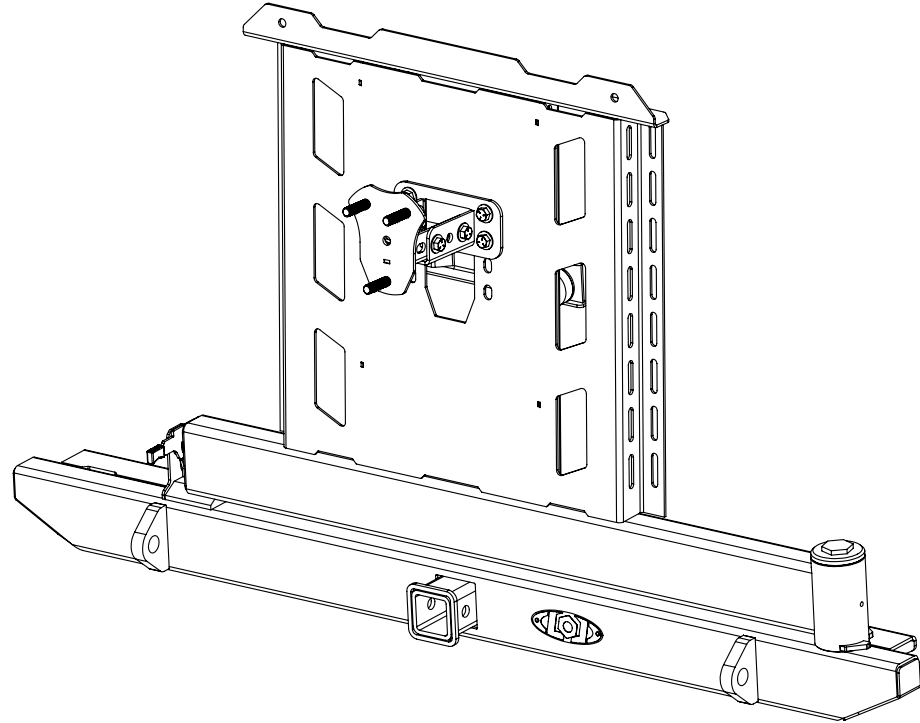
| ITEM NO. | PART NUMBER | DESCRIPTION                       | QTY. |
|----------|-------------|-----------------------------------|------|
| 1        | 4JBC9620-04 | DESTROYER E SERIES REAR BUMPER TC | 1    |
| 2        | 4JBC9640-03 | TJ/LJ DESTROYER SWING ARM         | 1    |
| 3        | 2JC1002-03  | SPINDLE CAP                       | 1    |

**HARDWARE KIT**

| ITEM NO. | PART NUMBER | DESCRIPTION   | QTY. |
|----------|-------------|---|------|
| 4        | LOGO1001    | DESTROYER LOGO - EMBOSSED                             | 1    |
| 5        | 4JBC9620-01 | FRAME BACKING PLATE                                   | 2    |
| 6        | 4JTC1001-04 | TIRE MOUNT BRACKET                                    | 1    |
| 7        | 4JBC9640-01 | TJ EXPEDITION TIRE MOUNT 5X4.5                        | 1    |
| 8        | 4JBC9640-04 | BUMPER DOOR BRACKET                                   | 1    |
| 9        | 2JBC9640-21 | SUPPORT PAD   | 1    |
| 10       | 2JBC9620-10 | EXPEDITION BOTTOM BRACKET - R                         | 1    |
| 11       | 2JBC9620-09 | EXPEDITION BOTTOM BRACKET - L                         | 1    |
| 12       | 2JBC1800-11 | SWING STOP SPACER                                     | 1    |
| 13       | 2JBC1800-10 | SWING STOP  | 1    |
| 14       | 2JBC9640-17 | LATCH SPACER  | 1    |
| 15       | 2JTC1001-22 | BEARING WASHER  | 1    |
| 16       | 2JTC1001-52 | RUBBER ISOLATOR                                       | 2    |
| 17       | 2JTC0701-10 | GREASE FITTING 1/4-28                                 | 1    |
| 18       | BP1001      | RUBBER BUMPER, 5/16-18 X .62"LG<br>THREADED STUD, 50D | 1    |
| 19       | LAT1002     | ROTARY PUSH TO CLOSE LATCH                            | 1    |
| 20       | LAT1003     | ROTARY LATCH STRIKER BOLT M10                         | 1    |
| 21       | LM48548     | TOP TAPERED BEARING                                   | 1    |
| 22       | LM29749     | BOTTOM TAPERED BEARING                                | 1    |
| 23       | 450068      | TIMKEN BEARING SEAL 450068                            | 1    |


**BOLT KIT**

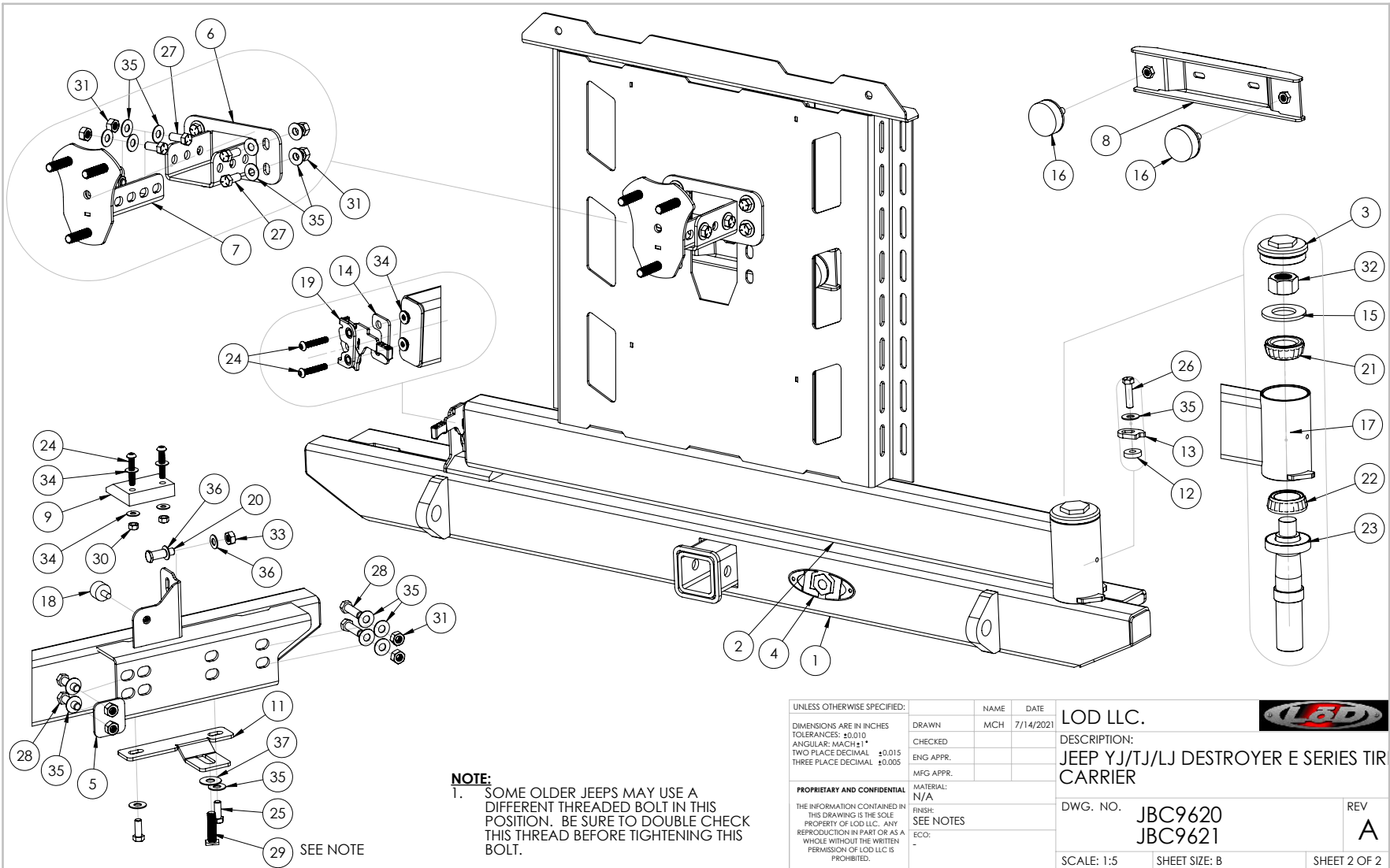
| ITEM NO. | PART NUMBER      | DESCRIPTION  | QTY. |
|----------|------------------|--|------|
| 24       | BHSCS311828ZP    | BHSCS 5/16-18 X 1.75 ZINC PLATE                    | 4    |
| 25       | HB381616ZPGR5    | HEX BOLT 3/8-16 X 1.00 ZINC PLATE GR5              | 4    |
| 26       | HB381624ZPGR5    | HEX BOLT 3/8-16 X 1.500 ZINC PLATE GR5             | 1    |
| 27       | HB431416ZPGR5    | HEX BOLT 7/16-14 X 1.00 HEX BOLT ZINC<br>PLATE GR5 | 8    |
| 28       | HB431424ZPGR5    | HEX BOLT 7/16-14 X 1.50 HEX BOLT ZINC<br>PLATE GR5 | 8    |
| 29       | HB12175M45ZPCL88 | HEX BOLT M12-1.75 x 45mm ZINC PLATE<br>CL8.8       | 2    |
| 30       | HN3118ZPGR5      | HEX NUT 5/16-18 ZINC PLATE GR5                     | 2    |
| 31       | HN4314ZPGR5      | HEX NUT 7/16-14 ZINC PLATE GR5                     | 12   |
| 32       | HN1014ZPGR5      | HEX NUT 1-14 ZINC PLATE GR5                        | 1    |
| 33       | HN10150M2PCL8    | HEX NUT M10 X 1.50mm ZINC PLATE CL8                | 1    |
| 34       | FW2512ZP         | FLAT WASHER Ø1/4" X .75 ZINC PLATE                 | 10   |
| 35       | FW3816ZP         | FLAT WASHER Ø3/8" X 1.00 ZINC PLATE                | 33   |
| 36       | FW3813YZ         | FLAT WASHER Ø.406" X .812 YELLOW ZINC              | 2    |
| 37       | FW4318ZP         | FLAT WASHER Ø7/16 X 1.25" ZINC PLATED              | 2    |



**NOTES**

1. JBC9620 = BARE STEEL
2. JBC9621 = BLACK POWDER COAT
3. WEIGHT = APPROX 108 LBS

|   |   |      |              |  |                 |
|---|---|------|--------------|--|-----------------|
| UNLESS OTHERWISE SPECIFIED:<br>DIMENSIONS ARE IN INCHES<br>TOLERANCES: ±0.010<br>ANGULAR: MACH ±1°<br>TWO PLACE DECIMAL ±0.015<br>THREE PLACE DECIMAL ±0.005  | DRAWN                                     | NAME | DATE         | <br><b>LOD LLC.</b><br>DESCRIPTION:<br><b>JEEP YJ/TJ/LJ DESTROYER E SERIES TIRE CARRIER</b> |                 |
|   | CHECKED                                   | MCH  | 7/14/2021    |  |                 |
| <b>PROPRIETARY AND CONFIDENTIAL</b><br>THE INFORMATION CONTAINED IN THIS DRAWING IS THE SOLE PROPERTY OF LOD LLC. ANY REPRODUCTION IN PART OR AS A WHOLE WITHOUT THE WRITTEN PERMISSION OF LOD LLC IS PROHIBITED. | ENG APPR.                                 |      |              | MATERIAL:<br>N/A<br>FINISH:<br>SEE NOTES<br>ECO:   |                 |
|   | MFG APPR.                                 |      |              |  |                 |
|   | DWG. NO. <b>JBC9620</b><br><b>JBC9621</b> |      |              |  | REV<br><b>A</b> |
|   | SCALE: 1:6                                |      |              |  | SHEET SIZE: B   |
|   |   |      | SHEET 1 OF 2 |  |                 |



**NOTE:**  
 1. SOME OLDER JEEPS MAY USE A DIFFERENT THREADED BOLT IN THIS POSITION. BE SURE TO DOUBLE CHECK THIS THREAD BEFORE TIGHTENING THIS BOLT.

SEE NOTE

|  |  |                                   |   |               |
|--|--|-----------------------------------|---|---------------|
| UNLESS OTHERWISE SPECIFIED:<br>DIMENSIONS ARE IN INCHES<br>TOLERANCES: ±0.010<br>ANGULAR: MACH±1°<br>TWO PLACE DECIMAL ±0.015<br>THREE PLACE DECIMAL ±0.005  | NAME<br>MCH                                | DATE<br>7/14/2021                 | LOD LLC.  |               |
| PROPRIETARY AND CONFIDENTIAL<br>THE INFORMATION CONTAINED IN THIS DRAWING IS THE SOLE PROPERTY OF LOD LLC. ANY REPRODUCTION IN PART OR AS A WHOLE WITHOUT THE WRITTEN PERMISSION OF LOD LLC IS PROHIBITED. | DRAWN<br>CHECKED<br>ENG APPR.<br>MFG APPR. | FINISH:<br>SEE NOTES<br>ECO:<br>- | DESCRIPTION:<br>JEEP YJ/TJ/LJ DESTROYER E SERIES TIRE CARRIER |               |
|  |  |                                   | DWG. NO.<br>JBC9620<br>JBC9621                                | REV<br>A      |
|  |  |                                   | SCALE: 1:5  | SHEET SIZE: B |
|  |  |                                   |   | SHEET 2 OF 2  |



**YJ/TJ/LJ Jeep  
DESTROYER - E Series  
Tire Carrier  
SHIPPING SHEET**

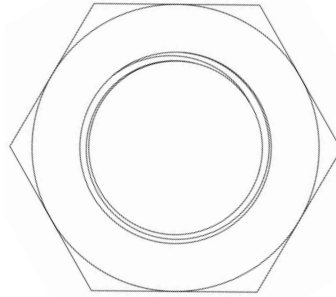
Sheet 1

Packaged by:

\_\_\_\_\_

On:

\_\_\_\_\_

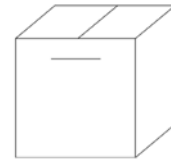
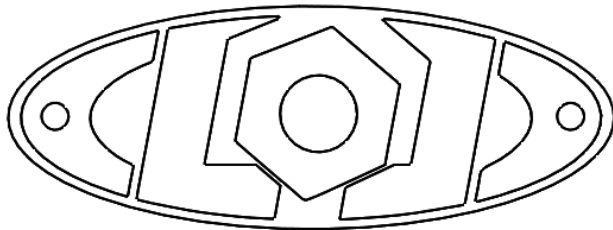
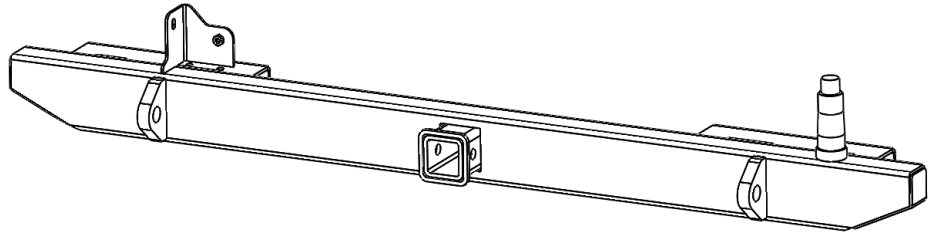


HEX NUT 1-14  
(36370)  
**(x1)**



\*installed on tire carrier spindle\*

Destroyer E Series  
Rear Bumper  
Tire Carrier Weldment



Hardware Kit  
(contents  
may vary)



PACKAGED SEPERATE IF BUMPER IS BARE STEEL

LOD LOGO  
**(x1)**



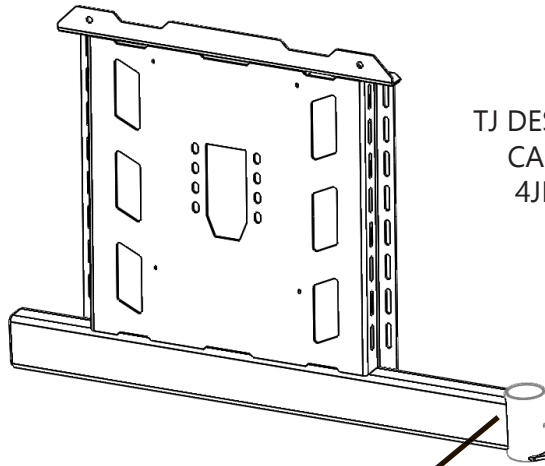




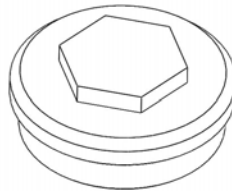
**YJ/TJ/LJ Jeep**  
**DESTROYER - E Series**  
**Tire Carrier**  
**SHIPPING SHEET**

Sheet 2  
Packaged by:

\_\_\_\_\_  
On:  
\_\_\_\_\_



TJ DESTROYER TIRE  
CARRIER ARM  
4JBC9640-03  
**(x1)**



SPINDLE CAP  
2JC1002-03  
**(x1)**



\*Installed in Tire Carrier Swing Arm

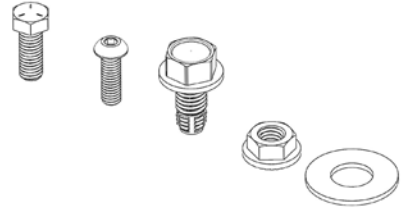


**YJ/TJ/LJ Jeep**  
**DESTROYER - E Series**  
 Tire Carrier  
 Hardware Kit  
 Sheet 1  
 Packaged by:

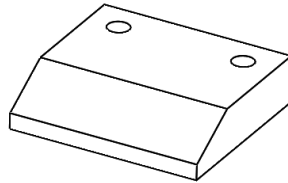
On: \_\_\_\_\_  
 \_\_\_\_\_



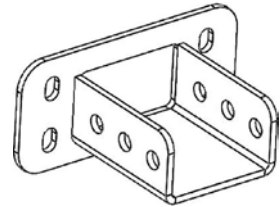
INSTRUCTION SHEET



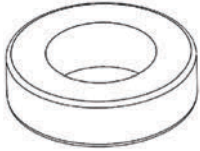
BOLT KIT  
 (may vary)



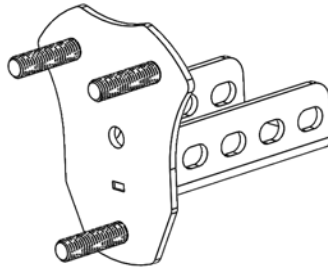
SUPPORT PAD  
 2JBC9640-21  
**(x1)**



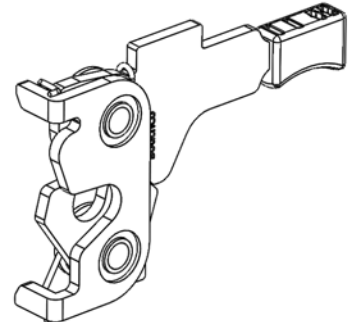
TIRE MOUNT BRACKET  
 4JTC1001-04  
**(x1)**



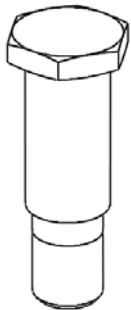
BEARING SEAL  
 450068  
**(x1)**



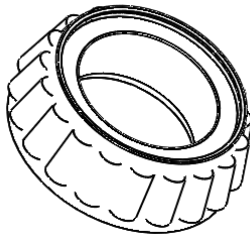
TIRE MOUNT  
 4JBC9640-01  
**(x1)**



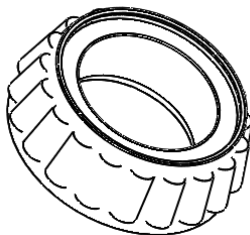
ROTARY LATCH  
 LAT1002  
**(x1)**



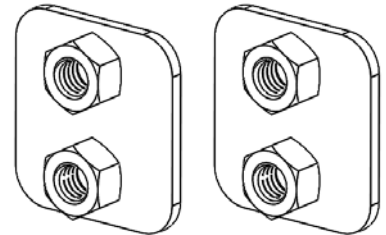
ROTARY LATCH STRIKER  
 BOLT  
 LAT1003  
**(x1)**



TOP  
 TAPERED  
 BEARING  
 LM48548)



BOTTOM  
 TAPERED  
 BEARING  
 LM29749)



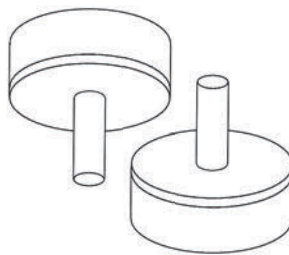
FRAME BACKING PLATE  
 4JBC9620-01  
**(x2)**



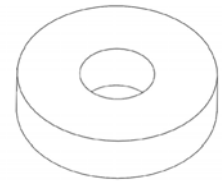


**YJ/TJ/LJ Jeep**  
**DESTROYER - E Series**  
 Tire Carrier  
 Hardware Kit  
 Sheet 2  
 Packaged by:

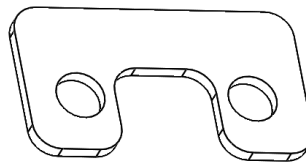
On: \_\_\_\_\_  
 \_\_\_\_\_



**RUBBER ISOLATOR**  
 2JTC1001-52  
**(x2)**



**SWING STOP SPACER**  
 2JBC1800-11  
**(x1)**



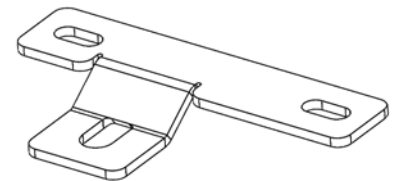
**LATCH SPACER**  
 2JBC9640-17  
**(x1)**



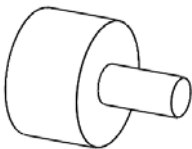
**SWING STOP**  
 2JBC1800-10  
**(x1)**



**BUMPER DOOR BRACKET**  
 4JBC9640-04  
**(x1)**



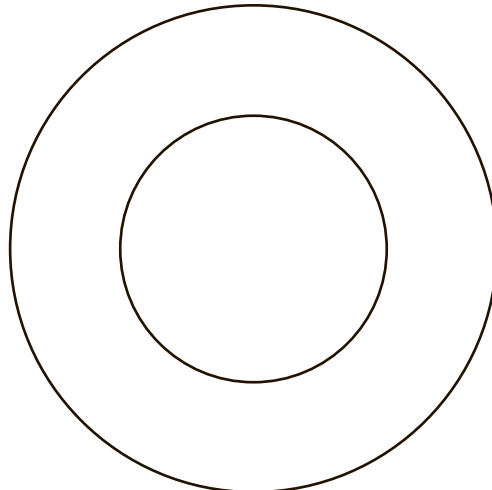
**EXP BOTTOM BRACKET - R**  
 2JBC9620-10  
**(x1)**



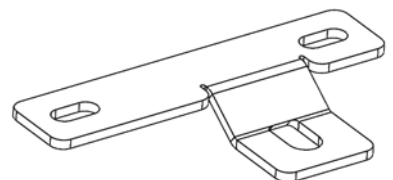
**RUBBER BUMPER**  
 BP1001  
**(x1)**



**BEARING WASHER**  
 1.395" X 2.542"  
**(x1)**



**GREASE FITTING**  
 1/4-28  
 (58771)  
**(x1)**



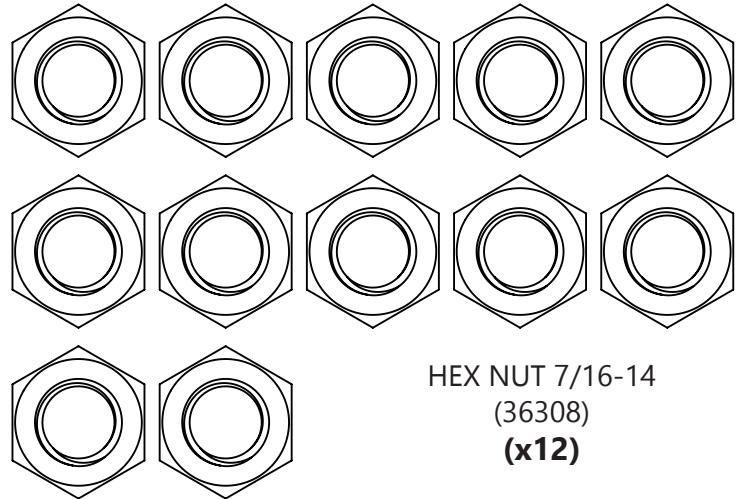
**EXP BOTTOM BRACKET - L**  
 2JBC9620-09  
**(x1)**



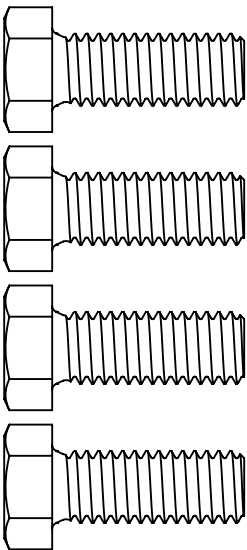


**TJ/TJ/LJ Jeep**  
**DESTROYER - E Series**  
**Tire Carrier**  
**Bolt Kit**  
Packaged by:

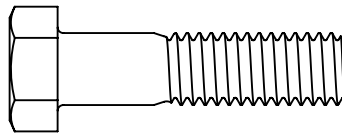
\_\_\_\_\_  
On:  
\_\_\_\_\_



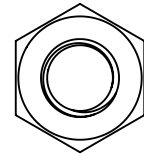
HEX NUT 7/16-14  
(36308)  
**(x12)**



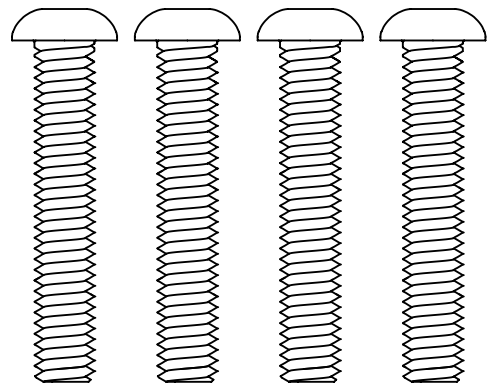
HEX BOLT 3/8-16 X 1.00"  
(0137514)  
**(x4)**



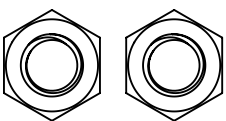
HEX BOLT 3/8-16 X 1.50"  
(0137516)  
**(x1)**



HEX NUT M10 X 1.50MM  
(36304)  
**(x1)**

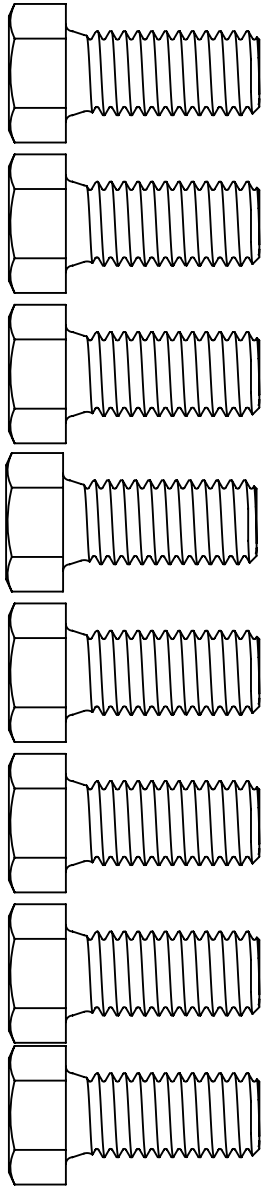


BUTTON HEAD SCREW  
5/16-18 X 1.75"  
(94074)  
**(x4)**

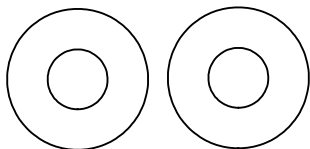


HEX NUT 5/16-18  
(36304)  
**(x2)**

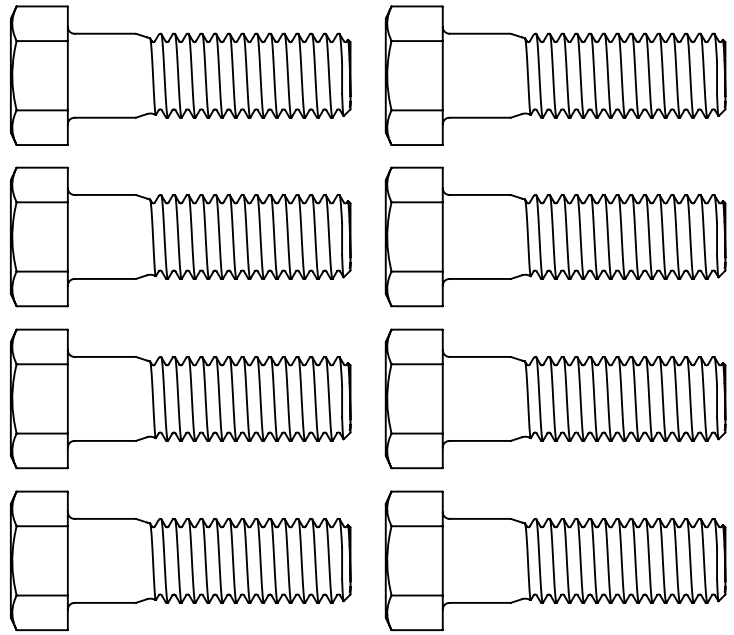




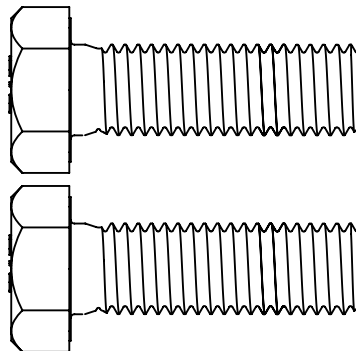
HEX BOLT 7/16-14 X 1.00"  
(11105772)  
**(x8)**



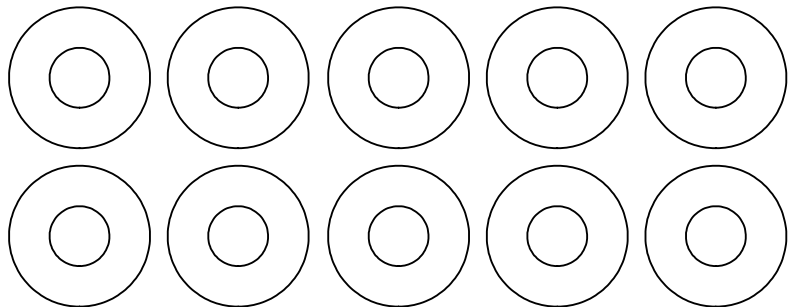
FLAT WASHER  
Ø.406" X .812"  
YELLOW ZINC  
(33815)  
**(x2)**



HEX BOLT 7/16-14 X 1.50"  
(110120363)  
**(x8)**

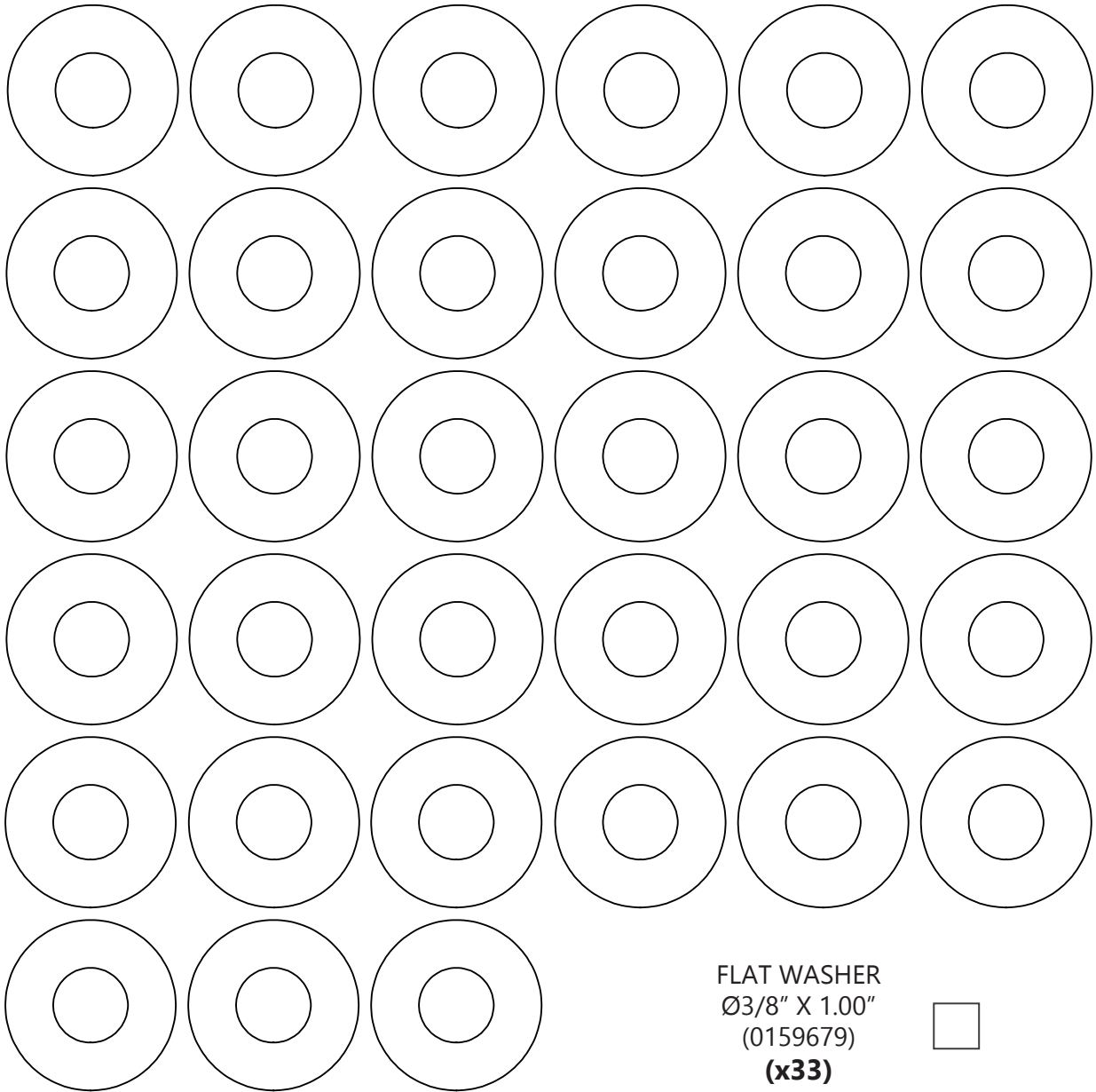


HEX BOLT M12-1.75 X 45MM  
(2138708)  
**(x2)**

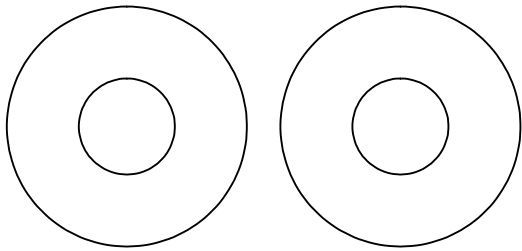


FLAT WASHER  
Ø1/4" X .75"  
(133004)  
**(x10)**





FLAT WASHER  
Ø3/8" X 1.00"  
(0159679)  
**(x33)**



FLAT WASHER  
Ø7/16" X 1.25"  
(0159680)  
**(x2)**

