



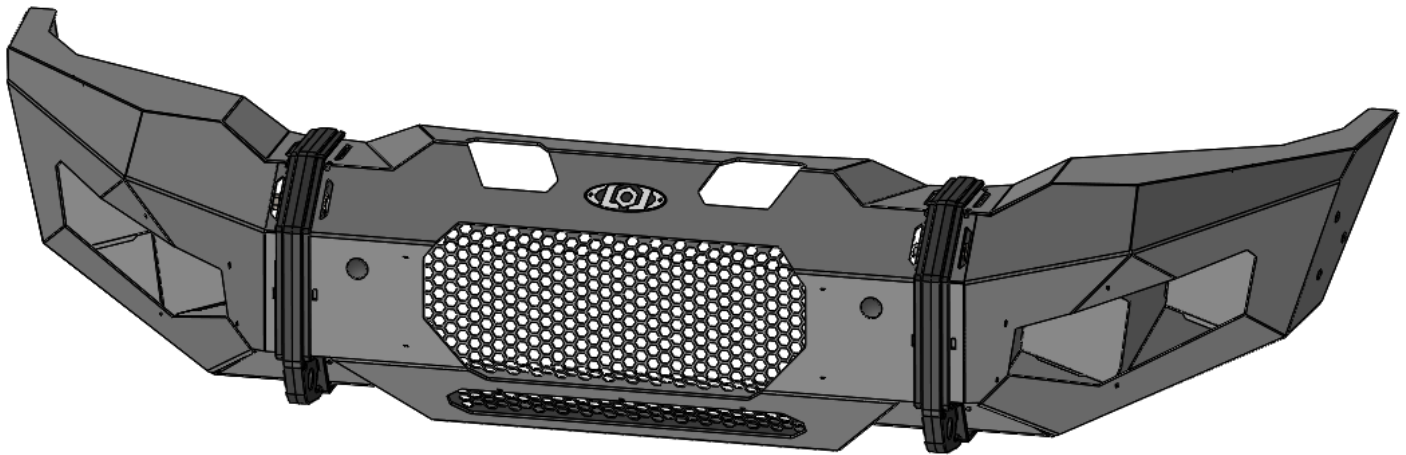
DESTROYER SERIES

TRUCK

FORD 2017
FRONT BUMPER



VERIFY YOU HAVE ALL THE COMPONENTS BEFORE STARTING THE INSTALLATION. REFER TO THE ENGINEERING DRAWINGS AT THE END OF THIS DOCUMENT FOR A COMPLETE PARTS LIST



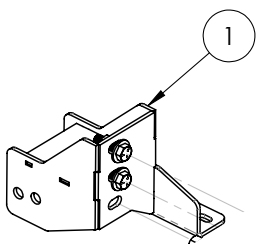
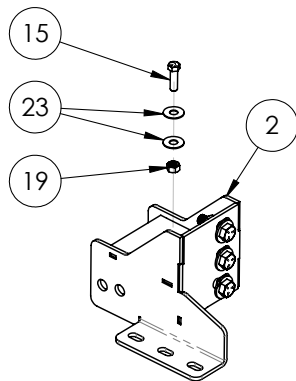
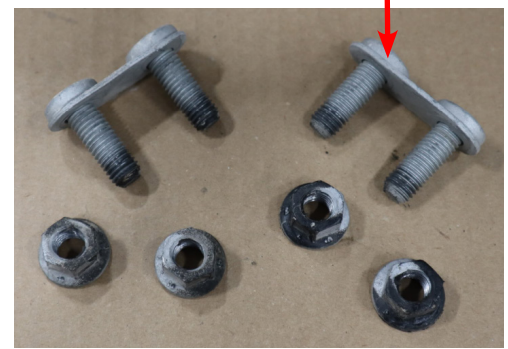
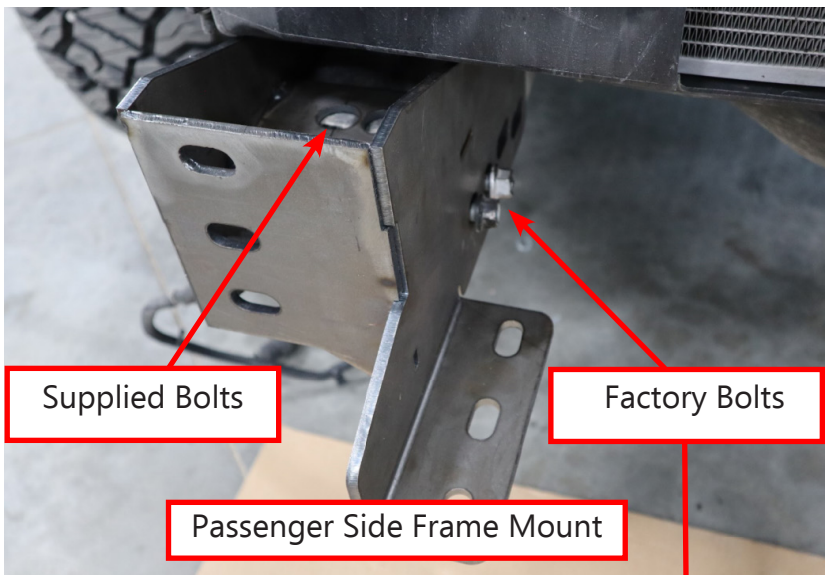
Begin by removing the factory front bumper from your truck.

If your bumper has fog lights and parking sensors, you will want to remove the sensors and wiring harness and sensor housings to install in your new bumper.



Install the Frame Mounts as shown using the original factory bolts in the side positions and supplied $\text{Ø}7/16''$ Bolts, Nuts and Washers in the four top positions.

Position the mounts so they are straight up and down and tighten the bolts securely.



Your truck may have an intercooler and a plastic or rubber shroud like the one shown here. If so you might need to trim the shroud around the Frame Mount. Trim the shroud before continuing with the installation.



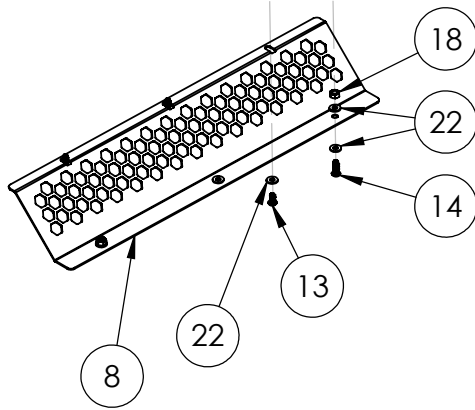
Trim Shroud
here if needed

****STOP****

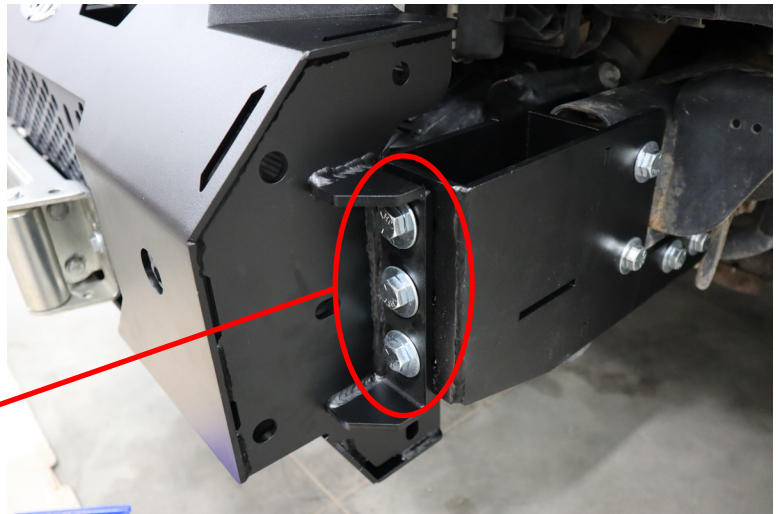
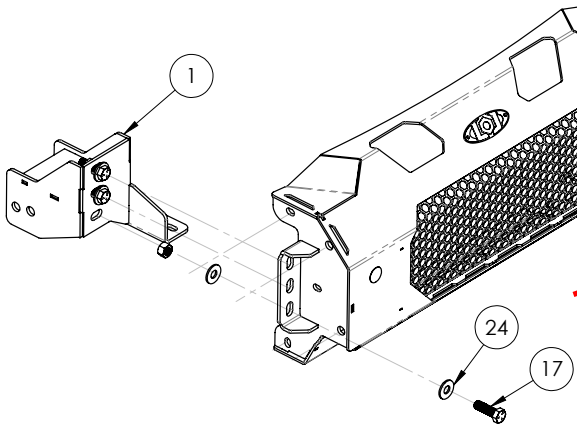
If you are installing a Front Hitch or Winch, refer the Installation Instructions before continuing.

Install the Lower Front Screen as shown using Ø1/4" Button Head Screws, Washers and Nuts.

If you need to replace the screens in the future, the large Front Screen and the Lower Front Screen can both be installed after the bumper is installed on the truck.



Install the Center Bumper Weldments as shown using Ø5/8" Hex Bolts, Nuts and Washers.



There is some adjustability side to side and up and down.

Make sure the Center Bumper Weldment is centered on the truck, and positioned as high as possible or as close to the grill as possible without touching.

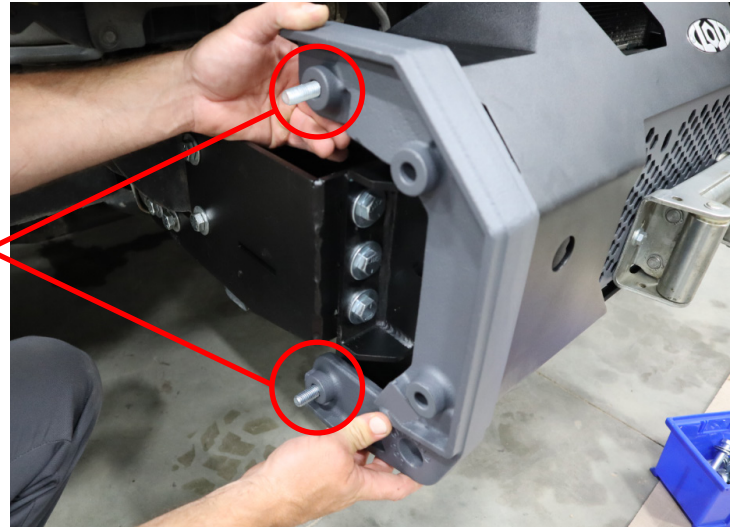
Once in position, securely tighten all 6 mounting bolts.



Install the Tow Points onto the Bumper Center as shown using the Ø1/2" Hex Bolts, Nuts and Washers.

Insert the bolts from inside the Bumper Center pointing out. If you are going to install a Bull Bar or Center Guard you can leave the top two bolts out for now. Otherwise start by installing 2 bolts (one at the top and one at the bottom) and position the tow point.

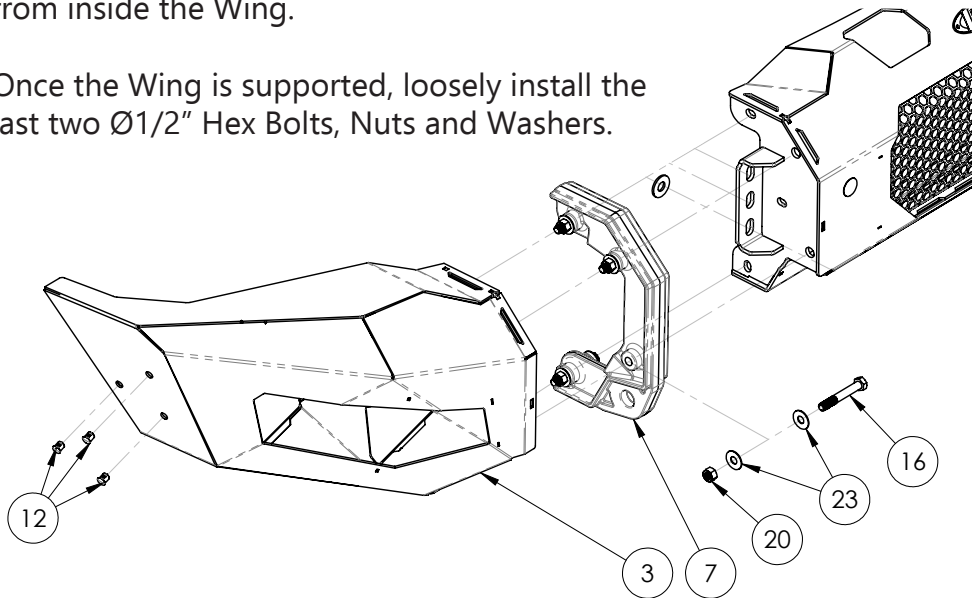
The Tow Points and Wings are heavy. It is best to have a helper to hold the Wing and Tow Point in position.



While holding the Tow Point and bolts in position, have a helper place the Wing onto the bolts. Then loosely install the Washer and Nut from inside the Wing.

TIP: A few pieces of blue masking tape can also help hold the Tow Point and Bolts in position while positioning the Wing.

Once the Wing is supported, loosely install the last two Ø1/2" Hex Bolts, Nuts and Washers.



With a helper, position the Wing so the gap between the top of the Wing and the truck body line are even and parallel.

Gaps

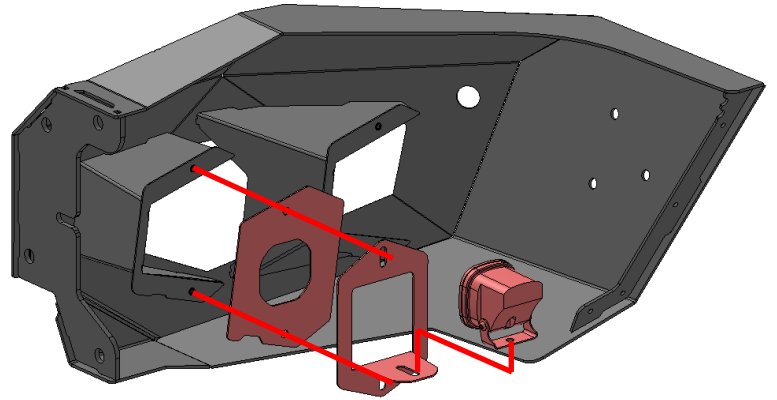
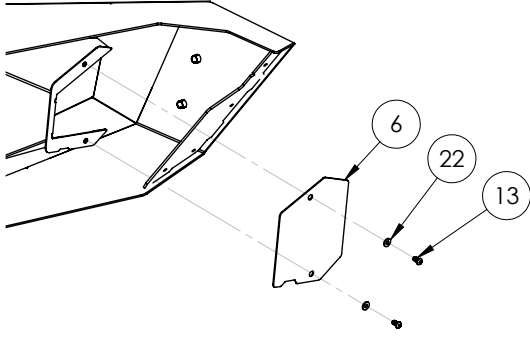
At the same time position the Tow Point so the gap between the bumper and Tow Point is even.

Gaps



Once everything is in position, securely tighten all four hex bolts.

Install the your lights and Light Bezels using the Ø1/4" Button Head Screws as shown.



Once the installation is complete you can trim your inner fender liners to match up with the bumper.



****Maintenance****

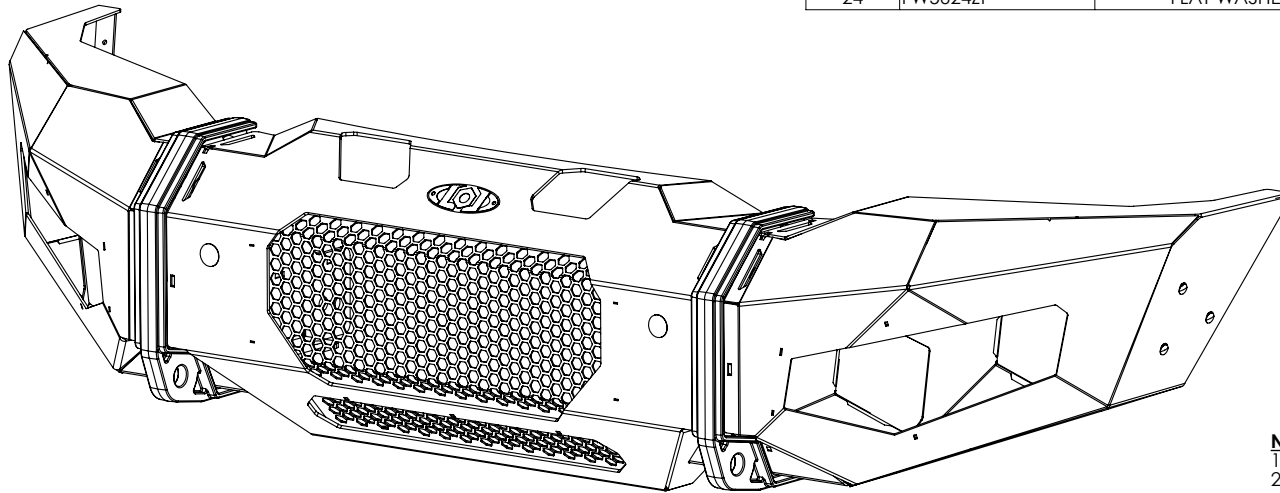
- Periodically check and re-tighten all fasteners.
-
- Periodically check your product for scratches, dings, or rust spots which can happen over time or after heavy use. It is important to address these areas as soon as possible to prevent rust and corrosion from spreading. We recommend using Rustoleum® brand Black Semi-Gloss Protective Enamel (oil based). Apply using a foam brush by dabbing to match the powder coat texture.



ITEM NO.	PART NUMBER	DESCRIPTION	QTY.
1	4FFB2017-01	2017 FORD FRONT MOUNT - PS	1
2	4FFB2017-02	2017 FORD FRONT MOUNT - DS	1
3	4FFB2017-03	FORD 2017 FRONT WING WELDMENT - PS	1
4	4FFB2017-04	FORD 2017 FRONT WING WELDMENT - DS	1
5	4MFB2020-01	MODULAR CENTER WELDMENT	1
6	2MFL2000-01	MODULAR FRONT LIGHT BEZEL - BLANK	4
7	2MFB2020-11	MODULAR TOW POINT	2
8	2MFB2020-18	LOWER SCREEN	1
9	2MFB2020-17	FRONT SCREEN	1
10	LOGO1001	DESTROYER LOGO - EMBOSSED	1
11	HP1004	HOLE PLUG Ø1.125"	2
12	HP1006	HOLE PLUG Ø0.50" BLACK	6

BOLT KIT

ITEM NO.	PART NUMBER	DESCRIPTION	QTY.
13	BHSCS252008ZP	BHSCS 1/4-20 X 0.50 ZINC PLATE	15
14	BHSCS252012ZP	BHSCS 1/4-20 X .75 ZINC PLATE	3
15	HB431424ZPGR5	HEX BOLT 7/16-14 X 1.50 HEX BOLT ZINC PLATE GR5	8
16	HB501356ZPGR5	HEX BOLT 1/2-13 X 3.50 HEX BOLT ZINC PLATE GR5	8
17	HB621132ZPGR5	HEX BOLT 5/8-11 X 2.00 HEX BOLT ZINC PLATE GR5	6
18	HN2520ZPGR5	HEX NUT 1/4-20 ZINC PLATED GR5	3
19	HN4314ZPGR5	HEX NUT 7/16-14 ZINC PLATE GR5	8
20	HN5013ZPGR5	HEX NUT 1/2-13 ZINC PLATE GR5	8
21	HN6211ZPGR5	HEX NUT 5/8-11 ZINC PLATE GR5	6
22	FW1209ZP	FLAT WASHER #12 X .56" ZINC PLATED	21
23	FW4318ZP	FLAT WASHER Ø7/16 X 1.25" ZINC PLATED	32
24	FW5624ZP	FLAT WASHER Ø9/16" X 1.47" ZINC PLATE	12



NOTES:

1. FFB1730 = BARE STEEL OPTION
2. FFB1731 = BLACK POWDER COAT
3. WEIGHT = APPROX 160LBS

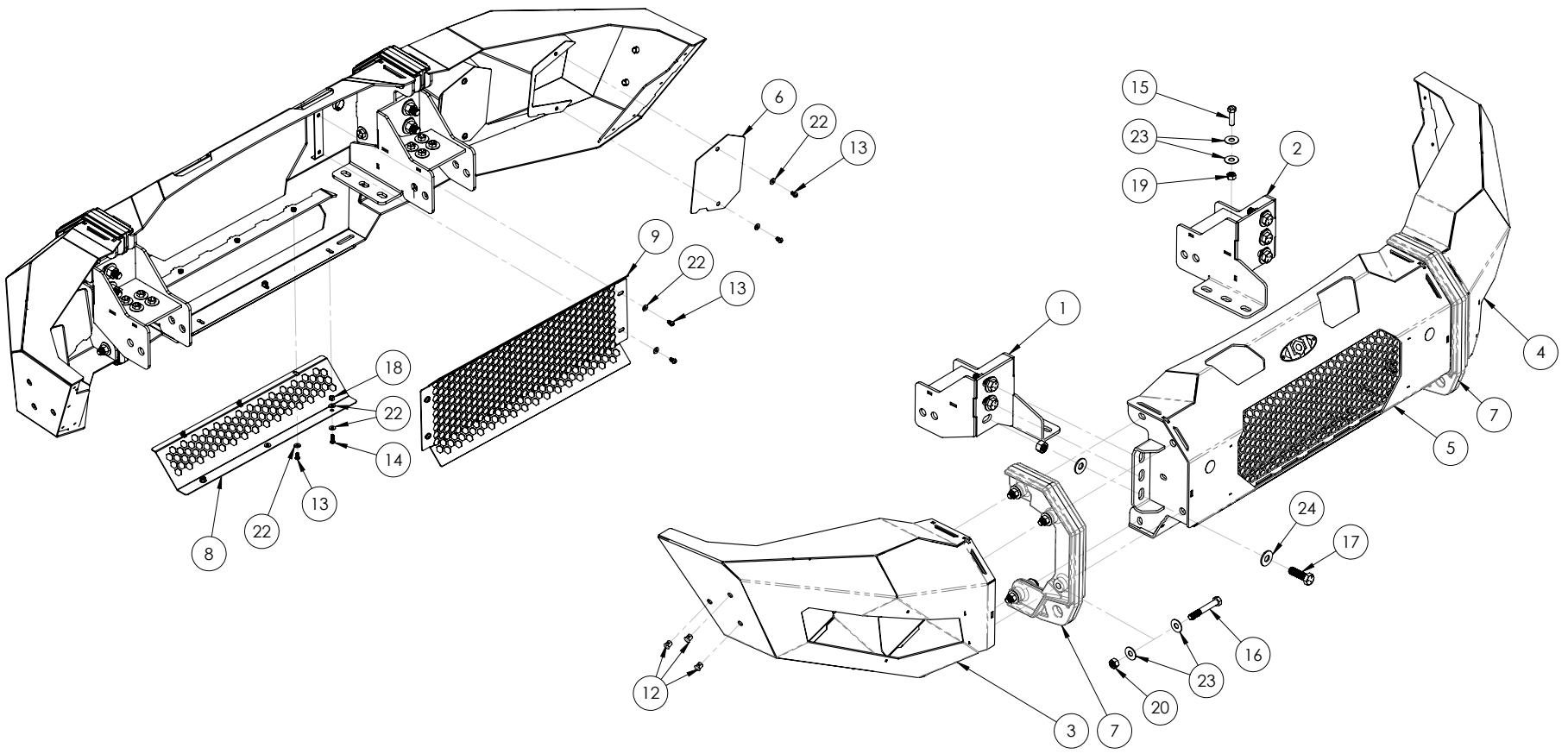
UNLESS OTHERWISE SPECIFIED:


DIMENSIONS ARE IN INCHES
 TOLERANCES: ±0.010
 ANGULAR: MACH±1°
 TWO PLACE DECIMAL: ±0.015
 THREE PLACE DECIMAL: ±0.005

PROPRIETARY AND CONFIDENTIAL
 THE INFORMATION CONTAINED IN
 THIS DRAWING IS THE SOLE
 PROPERTY OF LOD LLC. ANY
 REPRODUCTION IN PART OR AS A
 WHOLE WITHOUT THE WRITTEN
 PERMISSION OF LOD LLC IS
 PROHIBITED.

	NAME	DATE
DRAWN	MCH	7/30/2021
CHECKED		
ENG APPR.		
MFG APPR.		
MATERIAL:	N/A	
FINISH:	SEE NOTES	
ECO:	-	

LOD LLC.		
DESCRIPTION: FORD 2017 DESTROYER FRONT BUMPER		
DWG. NO.	FFB1730 FFB1731	REV A
SCALE: 1:6	SHEET SIZE: B	SHEET 1 OF 2



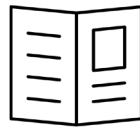
UNLESS OTHERWISE SPECIFIED:		NAME	DATE	
DIMENSIONS ARE IN INCHES TOLERANCES: ±0.010 ANGULAR: MACH ±1° TWO PLACE DECIMAL ±0.015 THREE PLACE DECIMAL ±0.005		MCH	7/30/2021	
PROPRIETARY AND CONFIDENTIAL THE INFORMATION CONTAINED IN THIS DRAWING IS THE SOLE PROPERTY OF LOD LLC. ANY REPRODUCTION IN PART OR AS A WHOLE WITHOUT THE WRITTEN PERMISSION OF LOD LLC IS PROHIBITED.		DRAWN CHECKED ENG APPR. MFG APPR.	MATERIAL: N/A FINISH: SEE NOTES ECO:	DESCRIPTION: FORD 2017 DESTROYER FRONT BUMPER
		DWG. NO. FFB1730 FFB1731		REV A
		SCALE: 1:9 SHEET SIZE: B		SHEET 2 OF 2



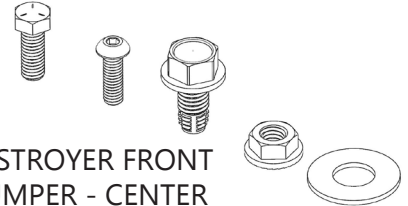
**TRUCK
DESTROYER SERIES
FRONT BUMPER - CENTER
SHIPPING SHEET
6MFB2020-01**

Packaged by:

On:



INSTRUCTION
SHEET

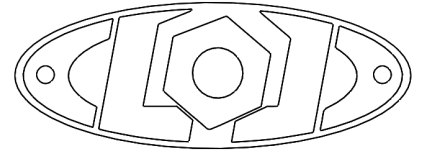


DESTROYER FRONT
BUMPER - CENTER
BOLT KIT
6MFB2020-BK
(x1)

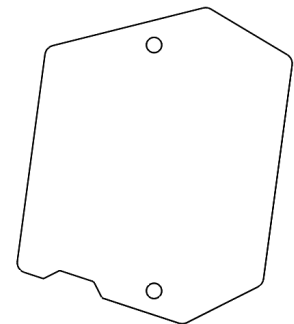
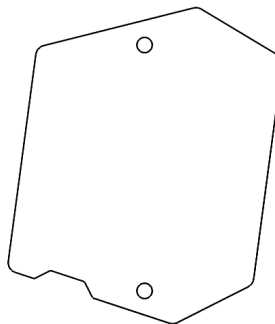
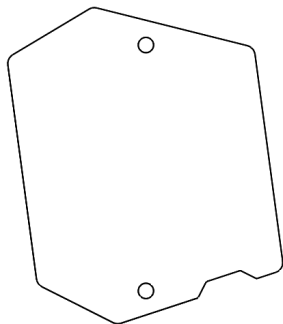
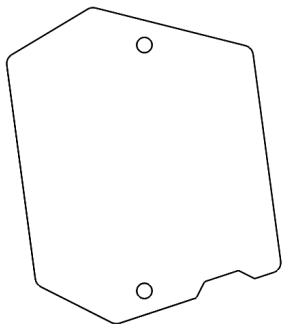
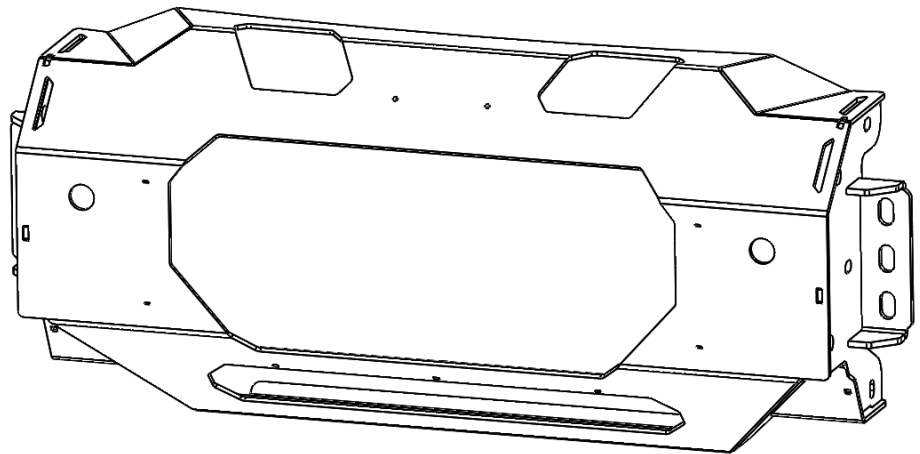


LOD LOGO
(PACKAGED SEPERATE
IF BUMPER IS BARE STEEL)

(x1)

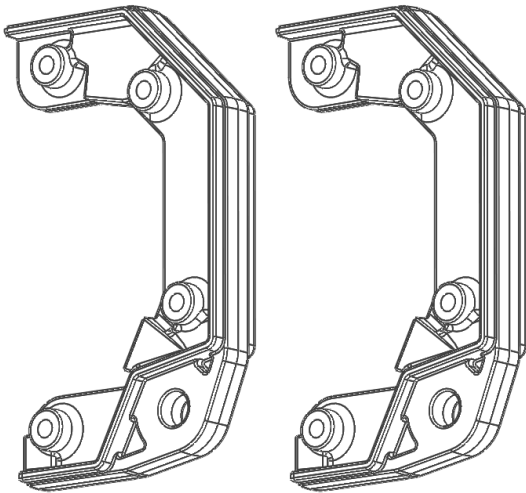


DESTROYER MODULAR CENTER
WELDMENT
4MFB2020-01
(x1)

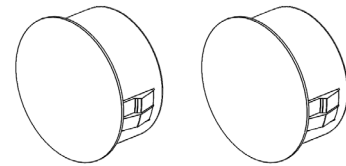


DESTROYER BLANK LIGHT
BEZEL KIT
2MFL2001-01
(x1)

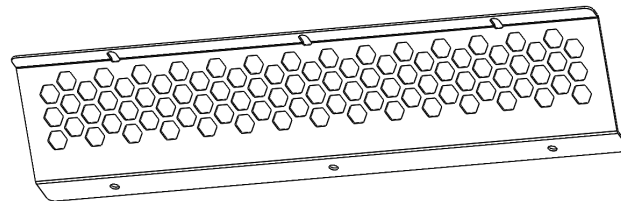




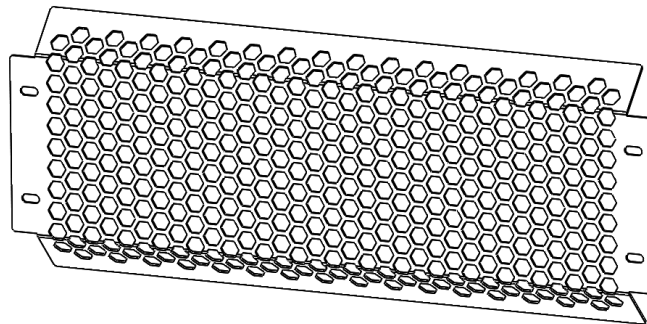
DESTROYER MODULAR
TOW POINT
2MFB2020-11
(x2)



HOLE PLUG Ø1.125
HP1004
(x2)



LOWER SCREEN
2MFB2020-18
(x1)



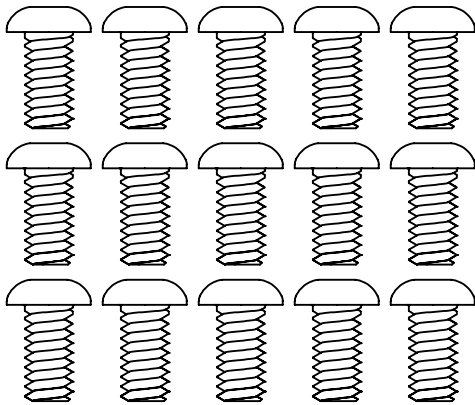
FRONT SCREEN
2MFB2020-17
(x1)



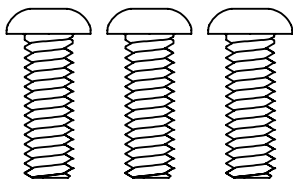
TRUCK
DESTROYER SERIES
FRONT BUMPER - CENTER
Bolt Kit
6MFB2020-BK

Packaged by:

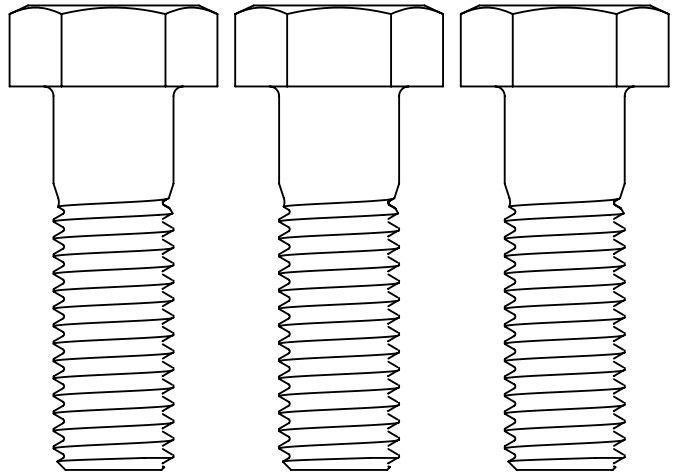
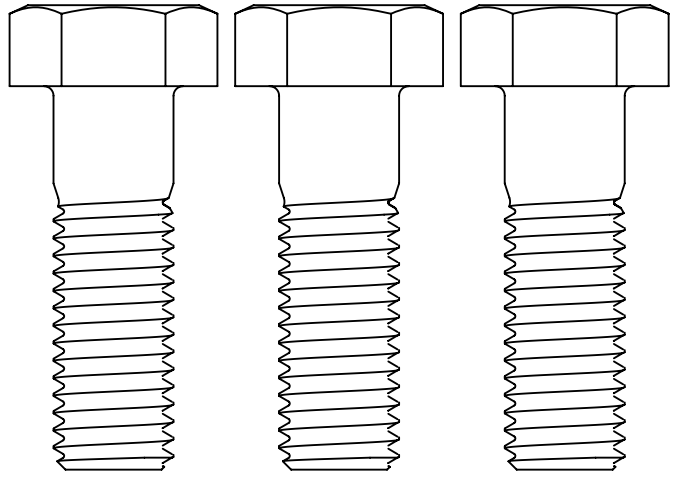
On: _____



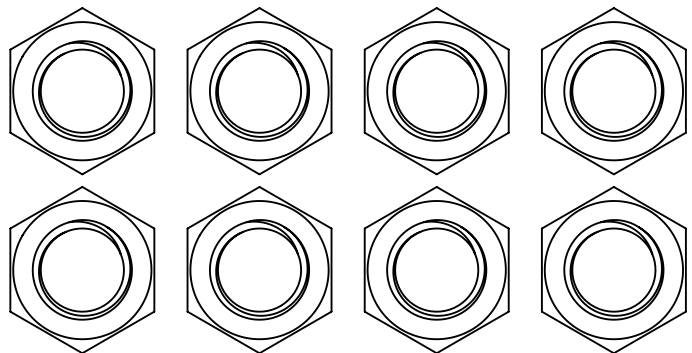
BUTTON HEAD SCREW
1/4-20 X 0.50"
(94049)
(x15)



BUTTON HEAD SCREW
1/4-20 X 0.75"
(94051)
(x3)

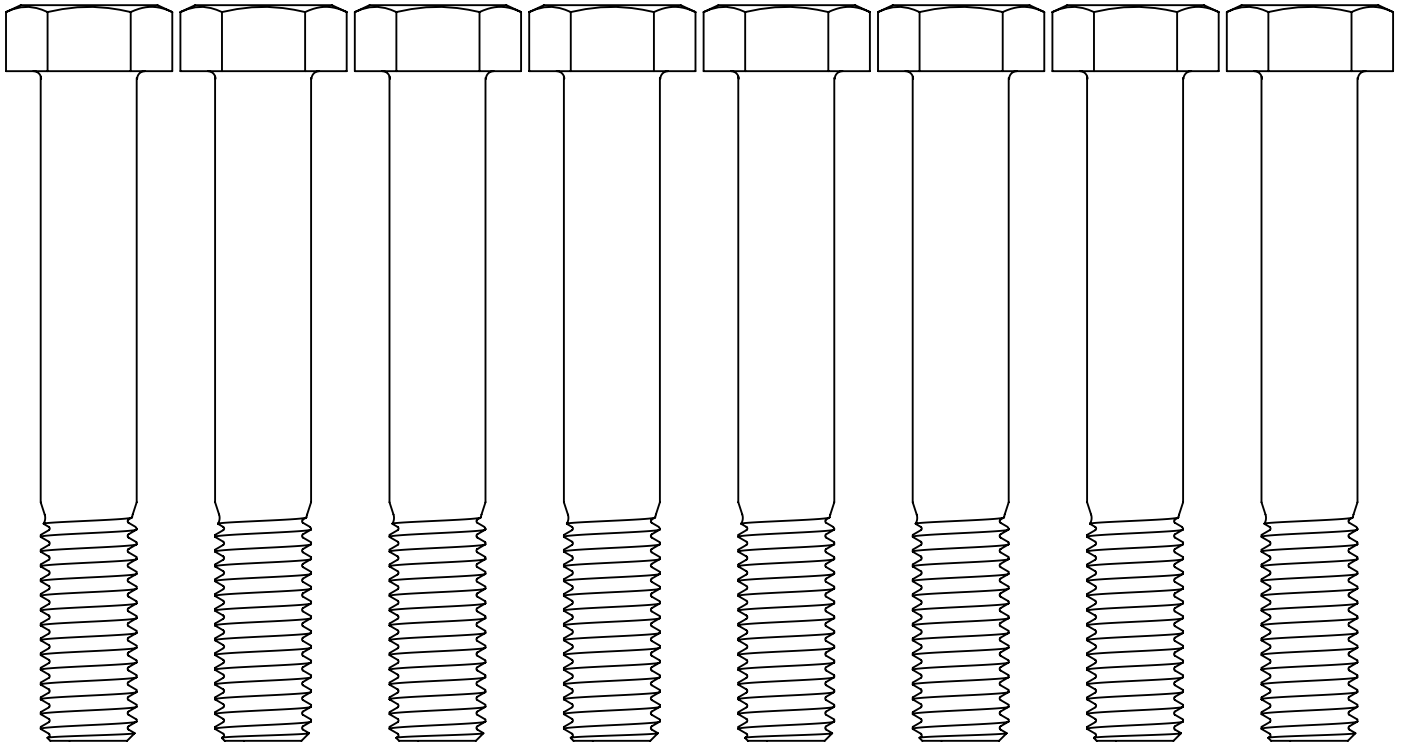


HEX BOLT 5/8-11 X 2.00"
(0137562)
(x6)



HEX NUT 1/2-13
(0147968)
(x8)





HEX BOLT 1/2-13 X 3.50"

(0137553)

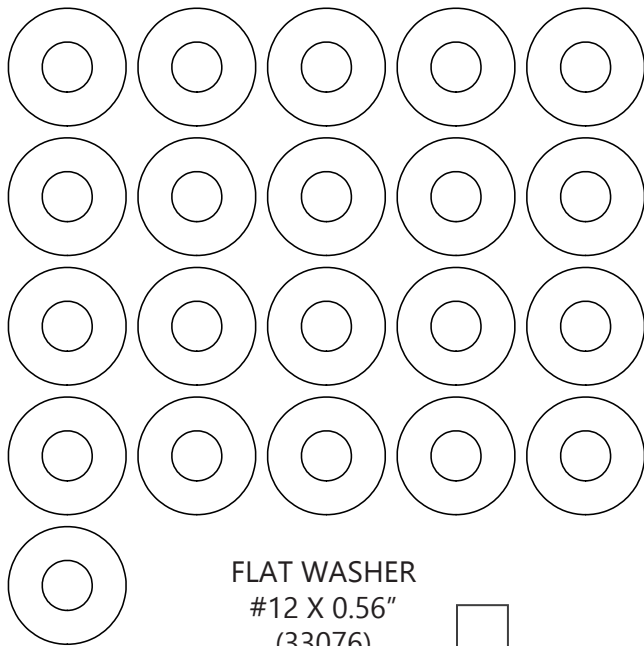
(x8)



HEX NUT 1/4-20

(0147964)

(x3)

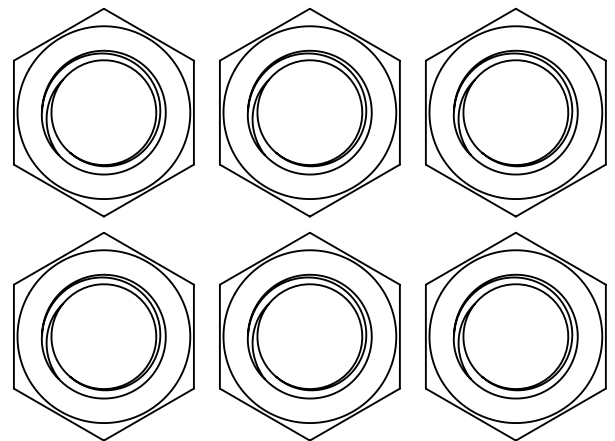


FLAT WASHER

#12 X 0.56"

(33076)

(x21)

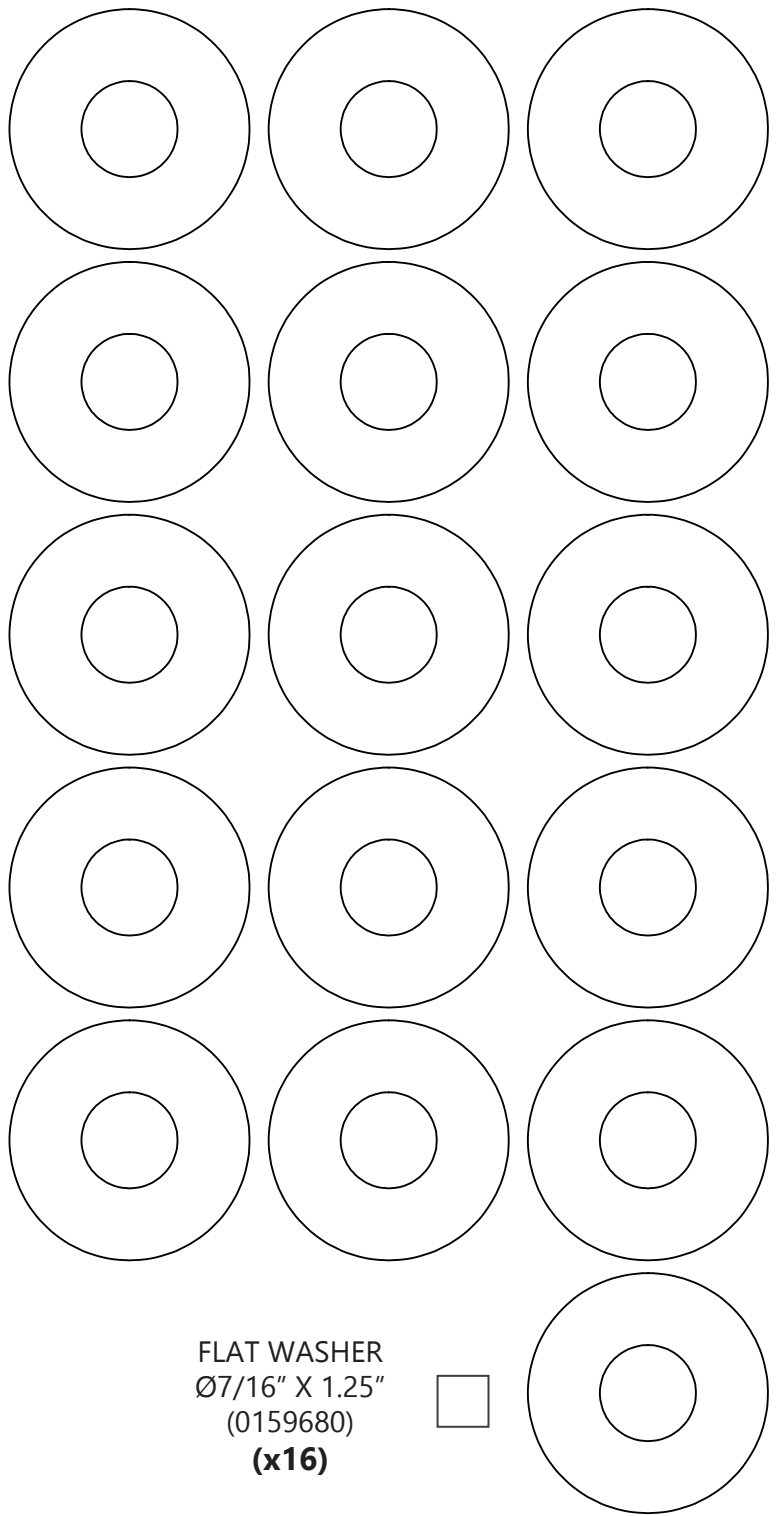
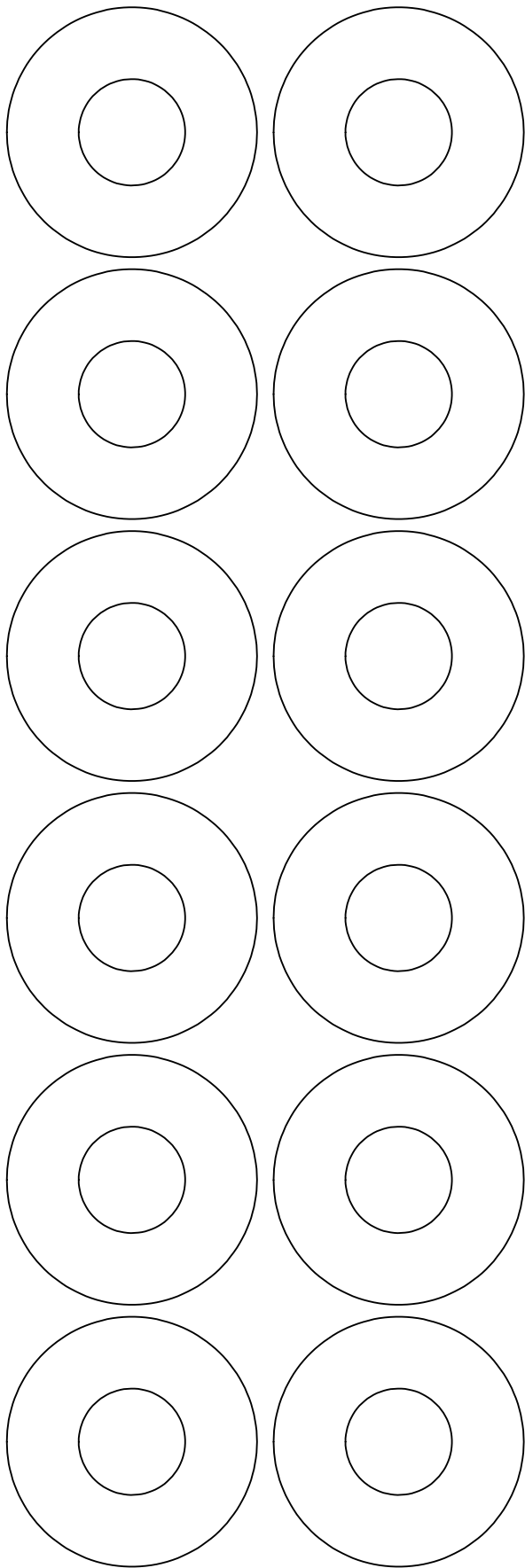


HEX NUT 5/8-11

(0147970)

(x6)





FLAT WASHER
Ø7/16" X 1.25"
(0159680)
(x16)



FLAT WASHER
Ø9/16" X 1.47"
(0159682)
(x12)

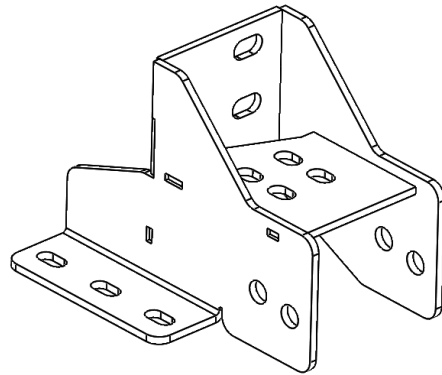
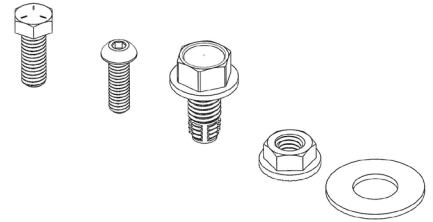


**TRUCK
DESTROYER SERIES
FORD 2017 FRONT WING
PASSENGER SIDE
SHIPPING SHEET
6FFB2017-01**

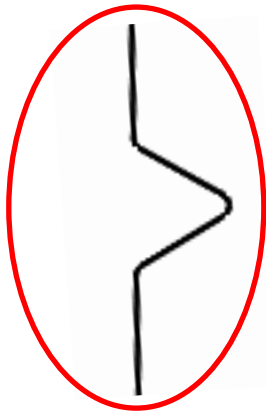
Packaged by:

On:

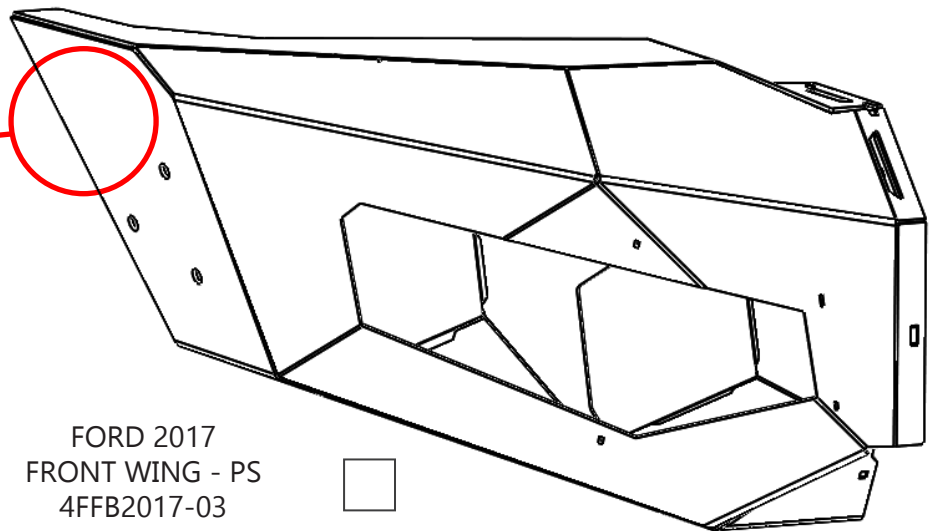
FORD 2017 FRONT
WING BOLT KIT
6FFB2017-BK
(x1)



FORD 2017
FRAME MOUNT - PS
4FFB2017-01
(x1)



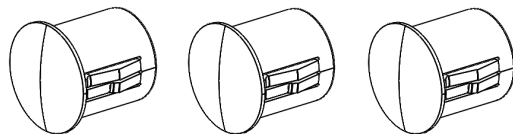
FORD 2017
IDENTIFIER



FORD 2017
FRONT WING - PS
4FFB2017-03
(x1)



HOLE PLUG Ø0.50
HP1006
(x3)



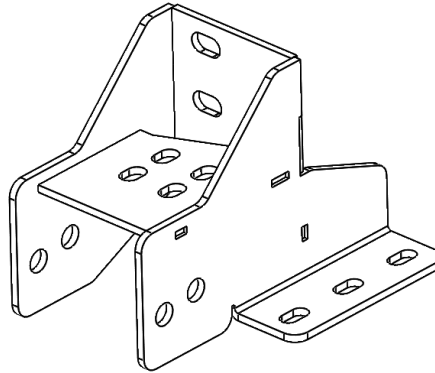
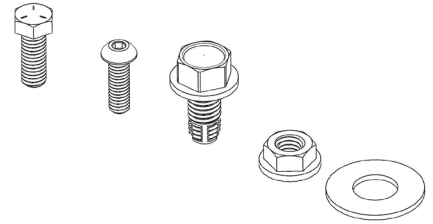


**TRUCK
DESTROYER SERIES**
FORD 2017 FRONT WING
DRIVER SIDE
SHIPPING SHEET
6FFB2017-02

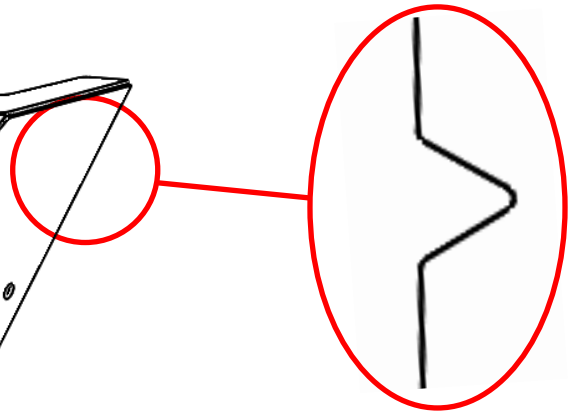
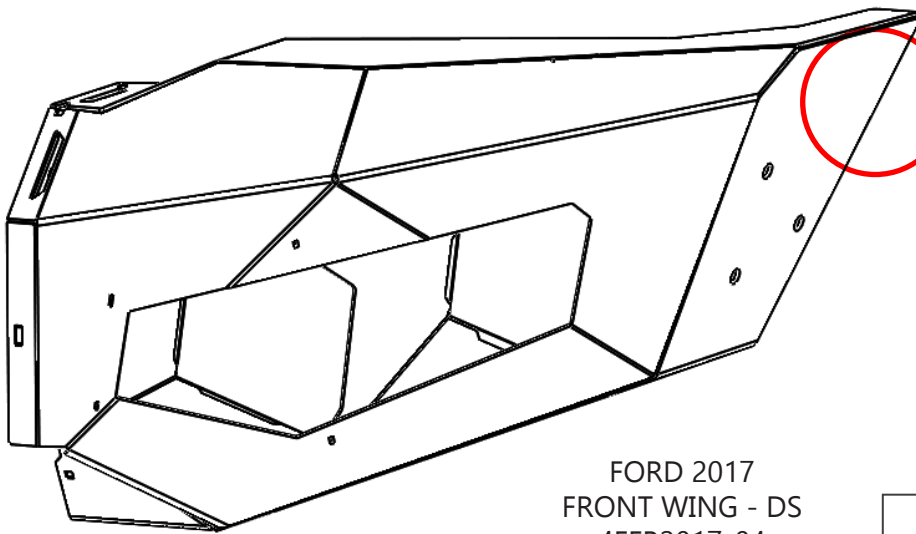
Packaged by:

On:

FORD 2017 FRONT
WING BOLT KIT
6FFB2017-BK
(x1)



FORD 2017
FRAME MOUNT - DS
4FFB2017-02
(x1)

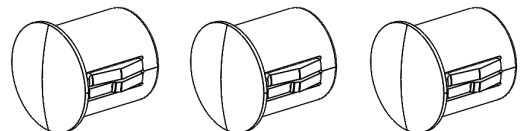


FORD 2017
IDENTIFIER

FORD 2017
FRONT WING - DS
4FFB2017-04
(x1)



HOLE PLUG Ø0.50
HP1006
(x3)

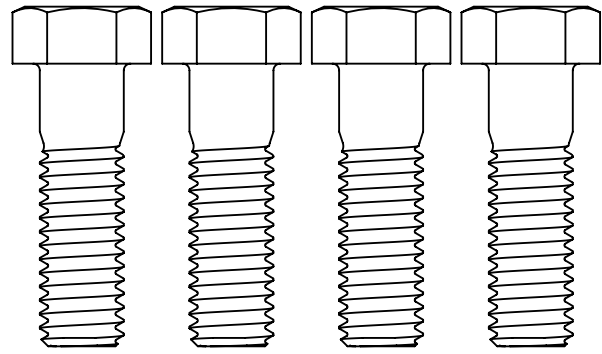




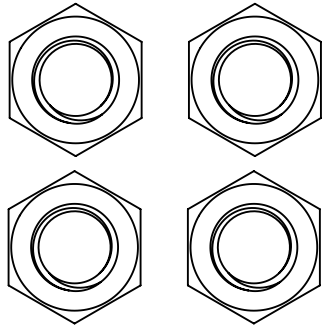
TRUCK
DESTROYER SERIES
FORD 2017 FRONT WING
6FFB2017-BK

Bolt Kit
Packaged by:

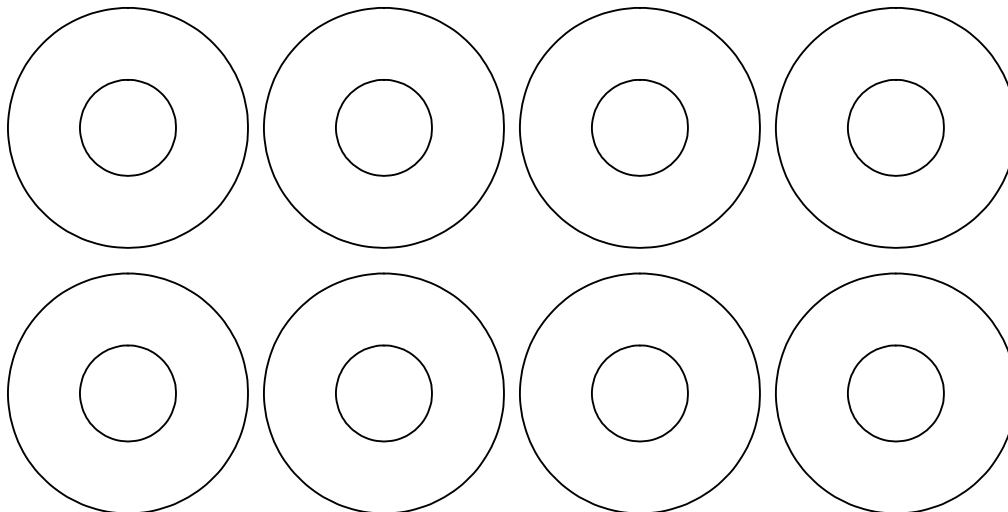
On:



HEX BOLT 7/16-14 X 1.50"
(0137533)
(x4)



HEX NUT 7/16-14
(36308)
(x4)



FLAT WASHER
Ø7/16" X 1.25"
(0159680)
(x8)

