



BLACK-OPS SERIES

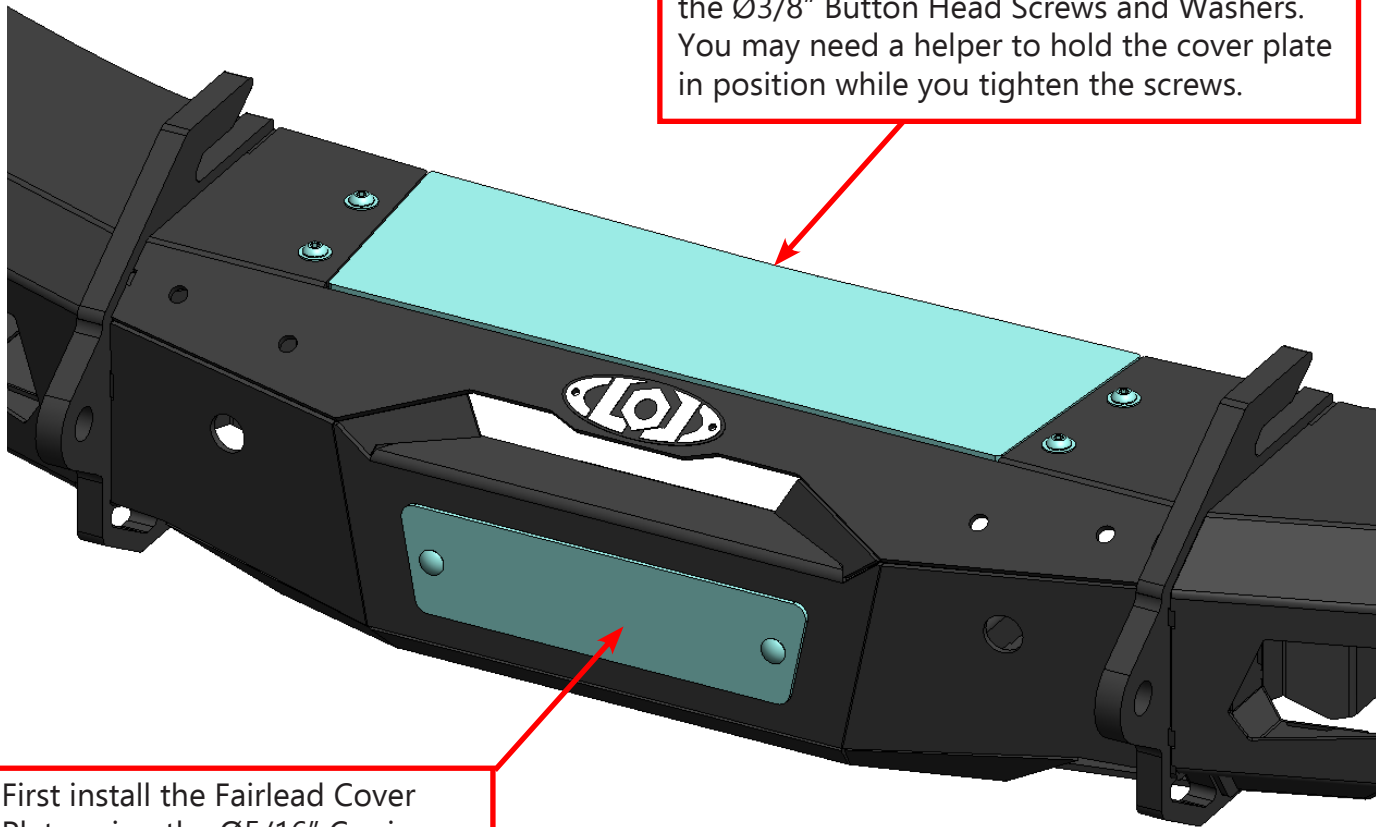
BRONCO

FRONT BUMPER WINCH
COVER PLATES



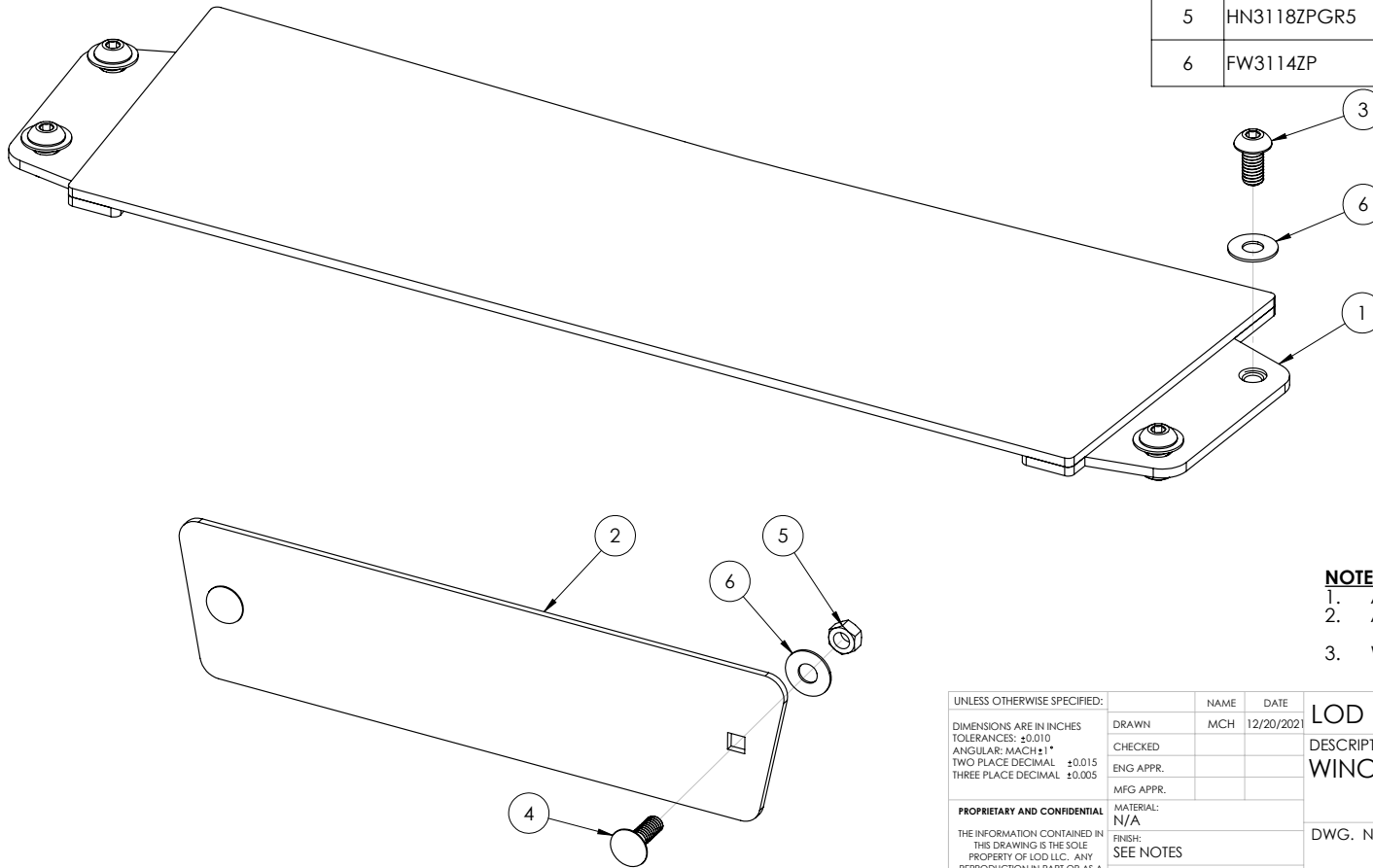
VERIFY YOU HAVE ALL THE COMPONENTS BEFORE STARTING THE INSTALLATION. REFER TO THE ENGINEERING DRAWINGS AT THE END OF THIS DOCUMENT FOR A COMPLETE PARTS LIST

Second install the Winch Cover plate by using the $\text{\O}3/8$ " Button Head Screws and Washers. You may need a helper to hold the cover plate in position while you tighten the screws.




First install the Fairlead Cover Plate using the $\text{\O}5/16$ " Carriage Bolts, Washers and Nuts.

ITEM NO.	PART NUMBER	DESCRIPTION	QTY.
1	4AFG2021-01	ADAPTIVE FRONT NO WINCH COVER	1
2	2AFG2021-14	FRONT COVER PLATE	1
3	BHSCS381612ZP	BHSCS 3/8-16 X .75 ZINC PLATE	4
4	CB311816ZPGR5	CARRIAGE BOLT 5/16-18 X 1.00 ZINC PLATE GR5	2
5	HN3118ZPGR5	HEX NUT 5/16-18 ZINC PLATE GR5	2
6	FW3114ZP	FLAT WASHER Ø5/16" X .875" ZINC PLATE	6



- NOTES:**
1. AFG2100 = BARE STEEL OPTION
 2. AFG2101 = BLACK POWDER COAT
 3. WEIGHT = APPROX 8 LBS

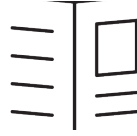
UNLESS OTHERWISE SPECIFIED: DIMENSIONS ARE IN INCHES TOLERANCES: ±0.010 ANGULAR: MACH±1° TWO PLACE DECIMAL ±0.015 THREE PLACE DECIMAL ±0.005	DRAWN	NAME	DATE	LOD LLC.  DESCRIPTION: WINCH COVER PLATE DWG. NO. AFG2100 AFG2101	REV A
	CHECKED	MCH	12/20/2021		
	ENG APPR.				
	MFG APPR.				
PROPRIETARY AND CONFIDENTIAL THE INFORMATION CONTAINED IN THIS DRAWING IS THE SOLE PROPERTY OF LOD LLC. ANY REPRODUCTION IN PART OR AS A WHOLE WITHOUT THE WRITTEN PERMISSION OF LOD LLC IS PROHIBITED.	MATERIAL:	N/A		SCALE: 1:2	SHEET SIZE: B
	FINISH:	SEE NOTES		SHEET 1 OF 1	
	ECD:	-			



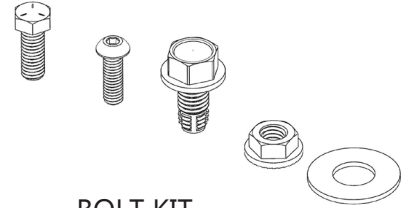
BRONCO
BLACK-OPS SERIES
FRONT BUMPER WINCH
COVER PLATES
SHIPPING SHEET

Packaged by:

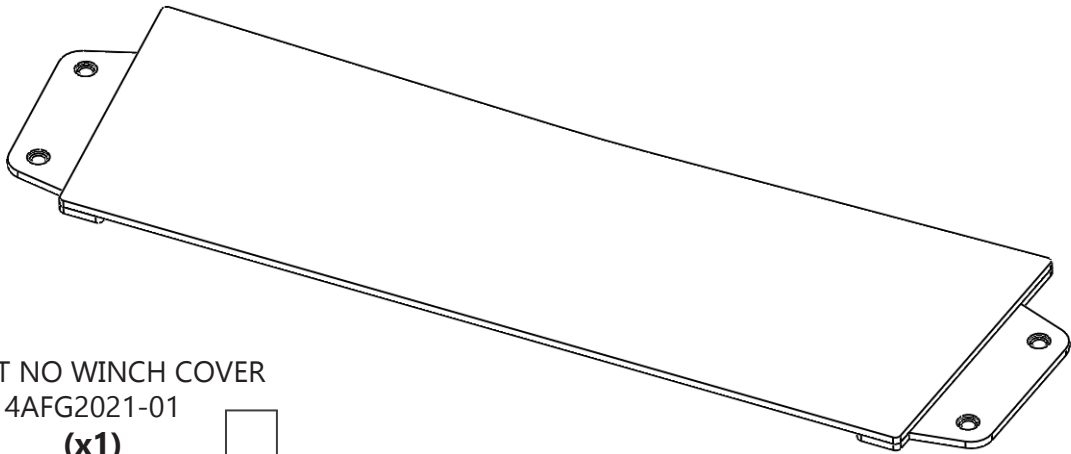
On:



INSTRUCTION
SHEET



BOLT KIT
AFG2100-BK
(x1)



FRONT NO WINCH COVER
4AFG2021-01
(x1)



FAIRLEAD FRONT COVER PLATE
2AFG2021-14
(x1)

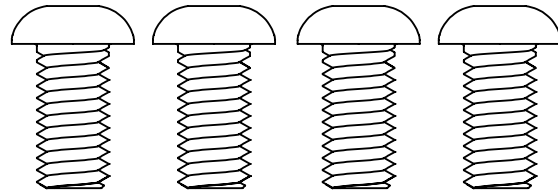




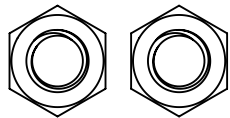
BRONCO
BLACK-OPS SERIES
FRONT BUMPER WINCH
COVER PLATES
AFG2100-BK
Bolt Kit

Packaged by:

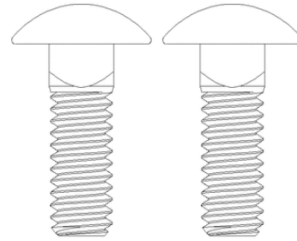
On:



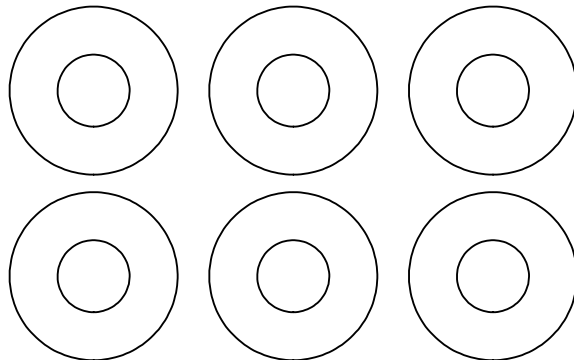
BUTTON HEAD SCREW
3/8-16 X .75" LG
(31161518)
(x4)



HEX NUT 5/16-18
(36304)
(x2)



CARRIAGE BOLT 5/16-18 X 1.00
(x2)



FLAT WASHER
Ø5/16" X .875"
(0159678)
(x6)