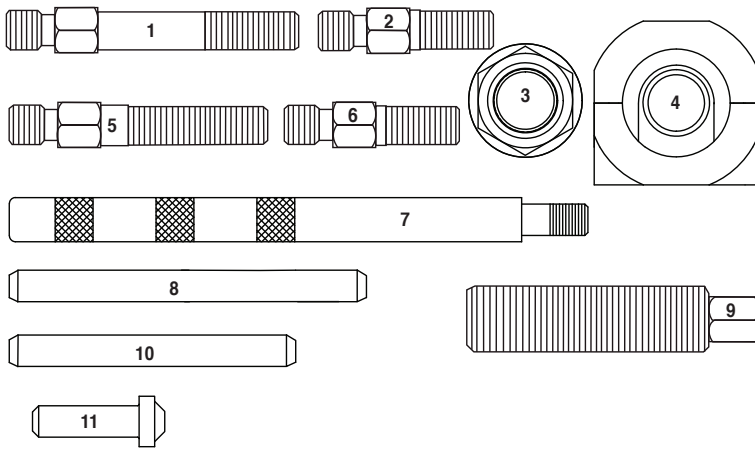


Instructions for "No Slip" Pulley Puller/Installer

⚠ WARNING:
Wear eye protection.



1. Quad 4 Installing Adapter
2. General Purpose Installing Adapter (Black Oxide)
3. Bearing, Washer, Nut
4. Two-Piece Pulley Body
5. 3.1 GM Installing Adapter
6. 8mm Ford Installing Adapter (Zinc Plated)
7. Handle
8. Quad 4 Removing Adapter (Long)
9. Puller Screw
10. 3.1 GM Removing Adapter (Short)
11. General Purpose Removing Adapter

Note: Parts shown are in same position in case.

Important: Keep puller screw and bearing lubricated.

Removal from shafts not requiring special adapters – See Illustration A

1. Select end of threaded puller body segment (4) that best fits pulley hub.
2. Push removing adapter (11) into puller screw (9).
3. Thread puller screw into threaded half of puller body.
4. Install threaded puller body segment with pusher screw over pulley hub.
5. Attach other half of puller body over hub by aligning slot in small segment with pin on big segment. Screw handle (7) into puller body and tighten.
6. Hold Handle (7) to keep from rotating. Use 7/16" wrench or impact tool to remove pulley from shaft.

