



# Portable Electric Car Charger (Level 2, 40A) User Manual



## Package Includes

- 1 x Portable Electric Car Charger
- 1 x User Manual



## Safety Information

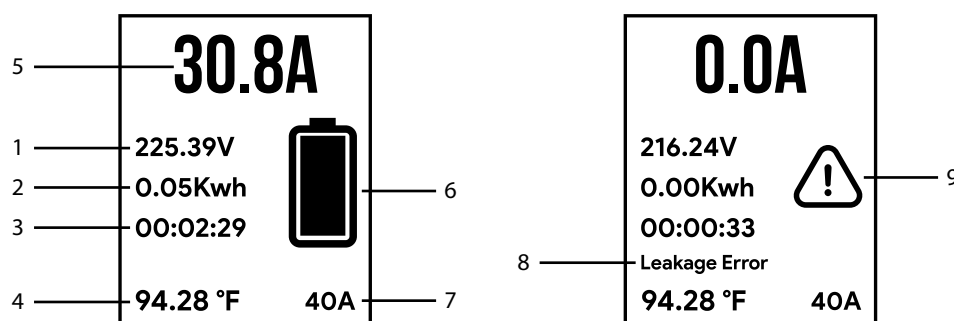
- It is recommended that electrical outlets for your charger should be installed by a licensed and qualified electrician. To avoid serious injury or death; installation must comply with the provisions of the National Electric Code (NEC) and all local codes. In cases of any conflict between the local codes and the NEC, local codes shall take precedence.
- This product must be grounded. If it should malfunction or break down, grounding provides a path of least resistance for electric current to help reduce the risk of electric shock. This product includes a cord that is equipped with a grounding conductor and a grounding plug. The plug must be inserted into an appropriate outlet that is properly installed and grounded in accordance with all local codes and ordinances.
- Do NOT DROP the charger or coupler (see image in the Charger Components section below).
- If the output plug separates from the charger module or the charge coupler, DO NOT ATTEMPT TO REPAIR THE CABLE YOURSELF.
- When using your charger, basic precautions should always be followed, including the following:
  - Read warnings on the charger cord label before operating the charger for the first time. Read all instructions in this guide before using this charger.
  - Never use the charger with an extension cord.
  - Never use the charger with any AC adapter.

- Shock hazard – make sure the plug is fully inserted into the wall outlet so that there are no exposed blade surfaces.
- Children should be supervised when in the vicinity of the charger while plugged in.
- To reduce the risk of fire, connect only to a circuit provided with 30 amps maximum branch circuit overcurrent protection.

## Charger Components



## Display Components



1. Real-time Voltage
2. Charger Amount
3. Charging Time
4. Temperature
5. Real-time Current

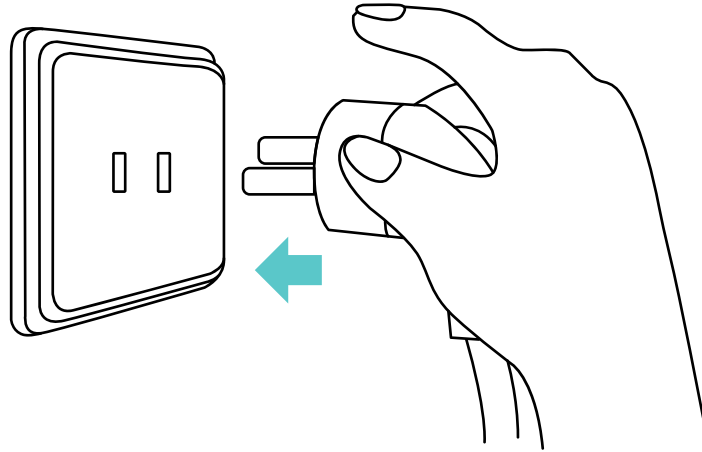
6. Charging Icon
7. Rated Current
8. Cause of Fault
9. Fault Icon

# Charging Your Vehicle

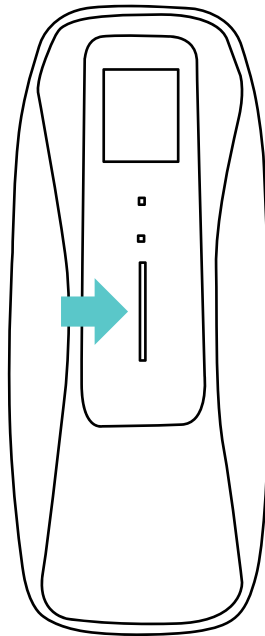
**Note:**

Ensure that the car is parked and the engine is turned OFF.

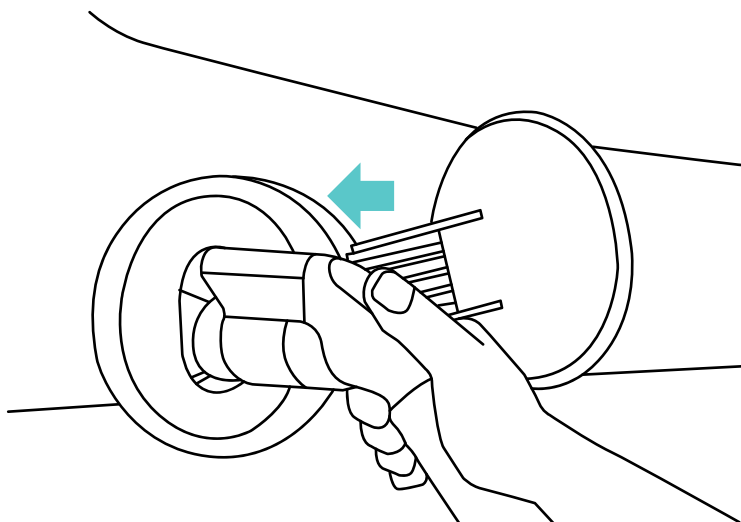
1. Insert the charger into an appropriate wall outlet.



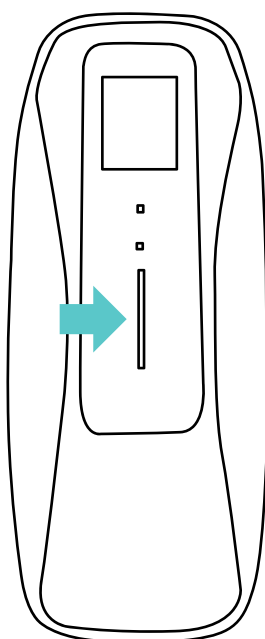
2. The indicator lights for Power & Connected will light up and stay solid to show that the charger is receiving AC power and is ready for use.



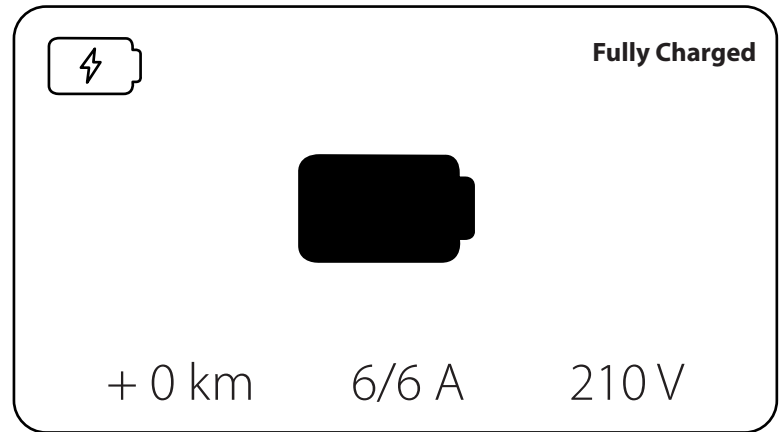
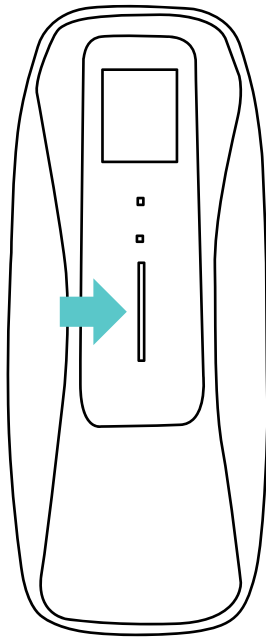
3. Plug the Charge Coupler into your vehicle's charging outlet until it clicks. Once latched, the Charge Coupler will not disengage until the release button has been pressed manually.



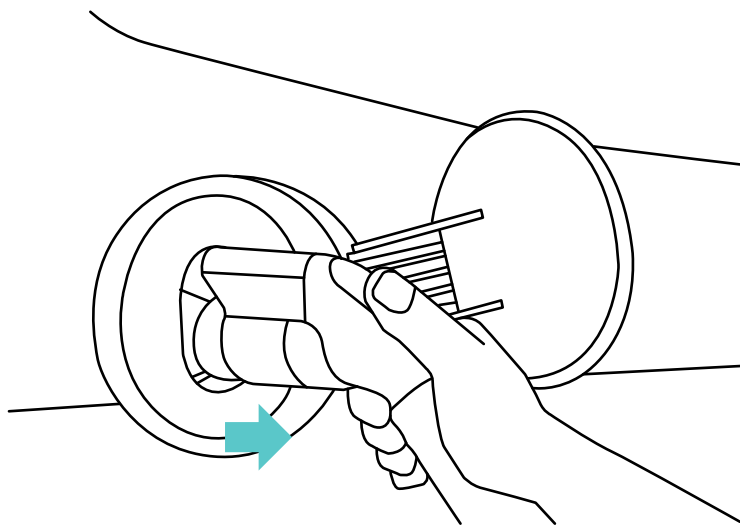
4. Charging begins automatically. Power will be delivered in accordance to the demand of the vehicle. While charging, the Charging Indicator will blink continuously. Always verify that the vehicle charging status indicator by checking your vehicle panel.



5. When the vehicle is fully charged, the Charging Indicator light will stay solid. Your vehicle has a “dashboard gauge” which can verify that the vehicle is fully charged. Refer to the vehicle owner’s manual to find the location of the gauge on your dashboard.



6. Disconnect the charger when the charge is completed by pressing the release button on the Charge Coupler and removing it from the vehicle.



**Note:**

240 VAC Operation: the charger requires either a 240 VAC split phase, or a 208 VAC two phase dedicated circuit. It draws a maximum of 40 amps continuous current.

# Troubleshooting

Please refer to this troubleshooting guide for possible solutions to common errors or difficulties when charging your vehicle using the portable charger.

Problem	Possible Cause	Solution
Charging Indicator does not illuminate.	No power to the charger.	1. Check the circuit breaker and other circuit loads. 2. Try another wall outlet. 3. Ensure that the charger module (and adapter if operating in 240 VAC mode) is fully inserted into the wall outlet.
	Charger internal failure.	Contact Lectron Customer Support.
Vehicle will not charge.  Fault Indicator remains solid.	Charge Coupler is not inserted into the vehicle.	1. Inspect the charge coupler. 2. Remove the charge coupler from the vehicle, then reinsert it into the vehicle receptacle until it clicks.
	Vehicle is not in a state to accept any charge.	Verify that the vehicle charge timer is set to permit charging. Refer to the vehicle owner's manual for charge timer instructions.
	Communication error between the charger and vehicle.	Contact Lectron Customer Support for assistance.
Fault Indicator is blinking rapidly.	Utility fault.	1. Disconnect the charger module from the wall outlet, then reconnect it. 2. If the condition persists, have a qualified electrician inspect the ground circuit of the wall outlet.
	Above the temperature limit.  Cases: 1. Temperature is too high. The charger will restart charging when it cools down.  2. House/socket wiring may be faulty.	1. Inspect the charger module for overheating. a. Carefully unplug the charger module from the wall outlet and allow to cool.  2. Disconnect the charger from the wall outlet. 3. Have a qualified electrician inspect the wall outlet and adapter.

## Specification

Line Input Power	: 240V AC
Frequency	: 60 Hz
Maximum Current	: 40A
Cable Length	: 16' of cable. Total reach of 18'
Plug	: NEMA 14-50 Plug
EV connector	: SAE-J1772
Dimensions	: 9.45' (24cm) x 3.5' (8.9cm) x 2.4' (6cm)
Weight	: 2.1 kg (4.6lbs)
Operating Temp	: -30°C to +50°C (-22°F to +122°F)



On our website you can discover more about ev charging.