

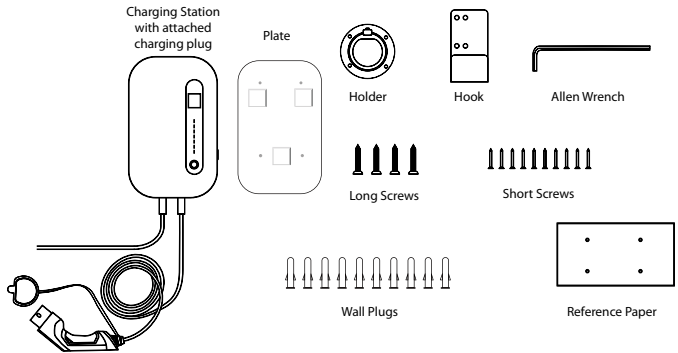


# Charging Station (Level 2) User Manual



# Package Includes

- 1 x Charging Station with attached charging plug
- 1 x Plate
- 1 x Holder
- 1 x Hook
- 1 x Allen Wrench
- 4 x Long Screws
- 10 x Short Screws
- 10 x Wall Plugs
- 1 x Reference Paper



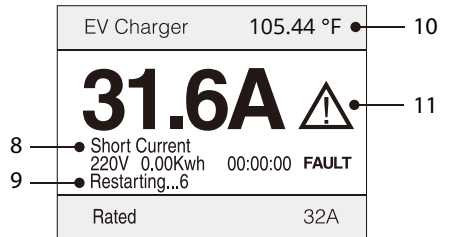
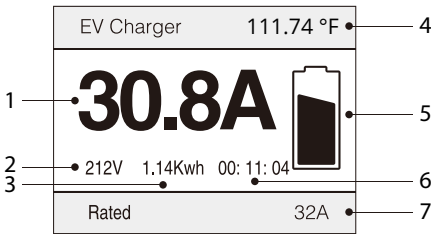
# Safety Information

- Failure to follow the instructions may result in danger.
- Do not disassemble the charging station while its operating.
- Install the charging station away from pyrotechnics, dusty or corrosive places.
- The charging station produces a high voltage output. You must pay attention to personal safety when using it.
- If a malfunction occurs, it may cause an electric shock or even death.
- Regularly check whether the charging station has visible damage. An electric shock may occur when operating a damaged charging station.
- If a ground fault occurs, it must be assumed that the cable carries voltage. Please confirm that there's no high-voltage power in the system before inspecting the charging station.
- Before powering the charging station, please confirm that the device is properly grounded to avoid unnecessary accidents.
- Do not modify, retrofit, or change any part by yourself under any circumstances.
- To ensure the service life and stable operation of the charging station, the operating environment should be kept as clean as possible with a relatively stable temperature and humidity. The charging station must not be used in a flammable environment.
- Be sure to confirm that the input voltage, frequency, circuit breakers and other conditions of the charging station meet the specifications before it is powered on.

# Charging Station Components



# Display Components



1. Real-time current
2. Real-time voltage
3. Power consumed
4. Temperature
5. Charging icon
6. Charging time
7. Rated current

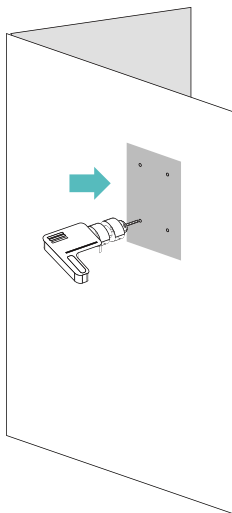
8. Cause of fault
9. Automatic restart
10. Temperature
11. Fault icon

## Note:

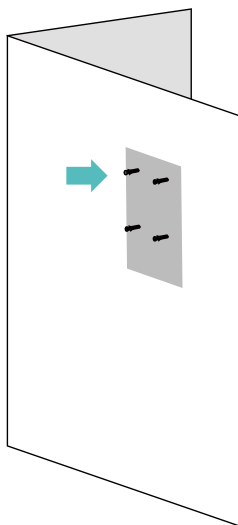
When small problems like short current occurs, the charging station will automatically restart to repair and continue charging.

# Installation

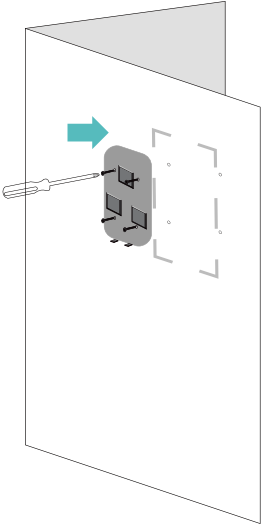
1. Drill holes according to the reference paper.



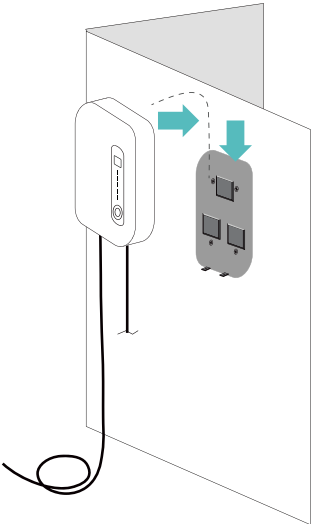
2. Insert the wall plugs on the holes. Remove the reference paper afterwards.



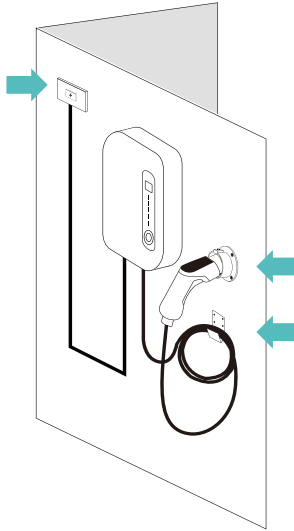
3. Attach the plate onto the wall using the long screws provided.



4. Attach the charging station onto the plate on the wall.

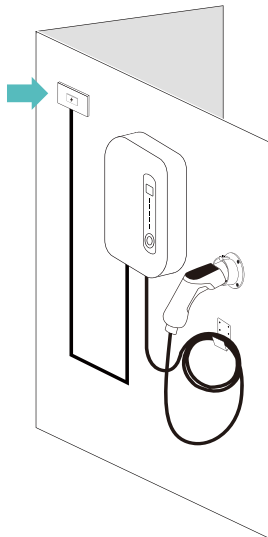


5. Connect the charging station onto a power source, and install the holder and the hook.

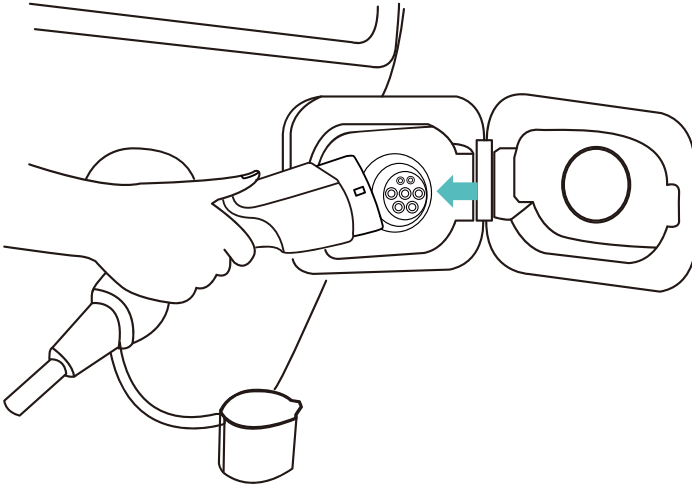


## How to Use

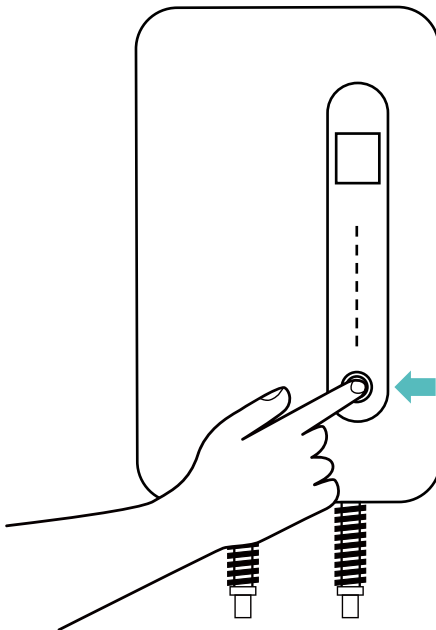
1. Ensure that the charging station is connected to a power source.



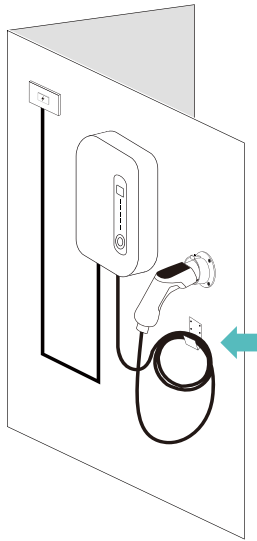
2. Connect your electric vehicle and the charging station with the charging plug.



3. Press the button on the right side of the charging station to start/stop charging.



4. Hang the cable on the hook when it is not in use.



## Specification

Installation Method	: Wall/Stand
Certificate	: TUV,CE
IP Rating	: IP66
Rated Voltage	: 230VAC±10%
Rated Current	: 32A/40A
Plug	: NEMA 6-50/14-50
Maximum Power	: 7.36kw/9.2kw
Phase Mode	: Single Phase
Operating Temperature	: -40°C to +55°C (-40°F to +131°F)
Enclosed Material	: ABS+PC alloy