

<b>Installation Instructions</b>		<b>KW</b> automotive
Instruction No.	686 43 002_1	

## **Deactivation of the electronic absorber regulation**

*Cars that are equipped with electronic damper systems need to be decommissioned in the following way:*

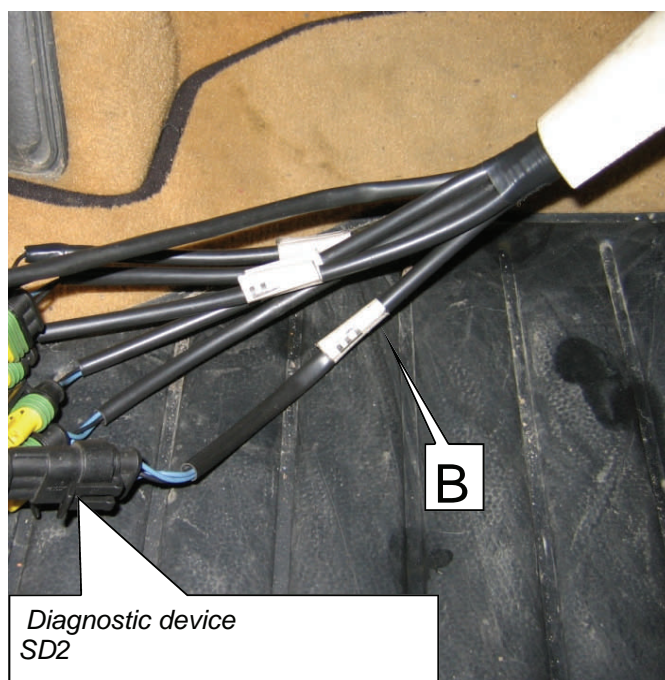
*Disconnect control box in the boot.*

*The control box is on the left side behind the boot covering.*

*Unisolate the plug with insulating tape and fix it at a suitable position against noise development.*



- Connect the diagnostic adapter to the vehicle.
- Connect the diagnostic connector B on the diagnostic unit SD2.



<b>Installation Instructions</b>		<b>KW</b> automotive
Instruction No.	686 43 002_1	

Select the mode "LINK WITH PC" in the diagnose unit SD2.



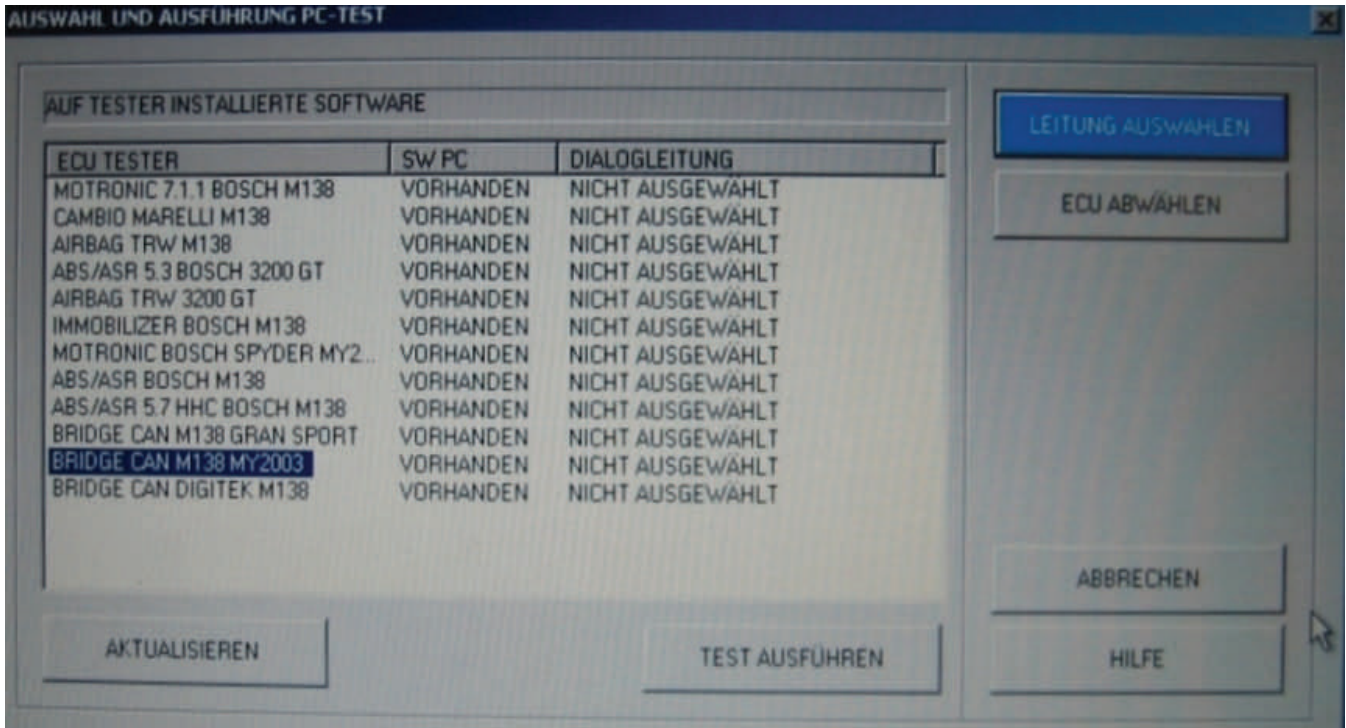
Open the program SD2 on the PC.

Select the "ECU test" in the menu.

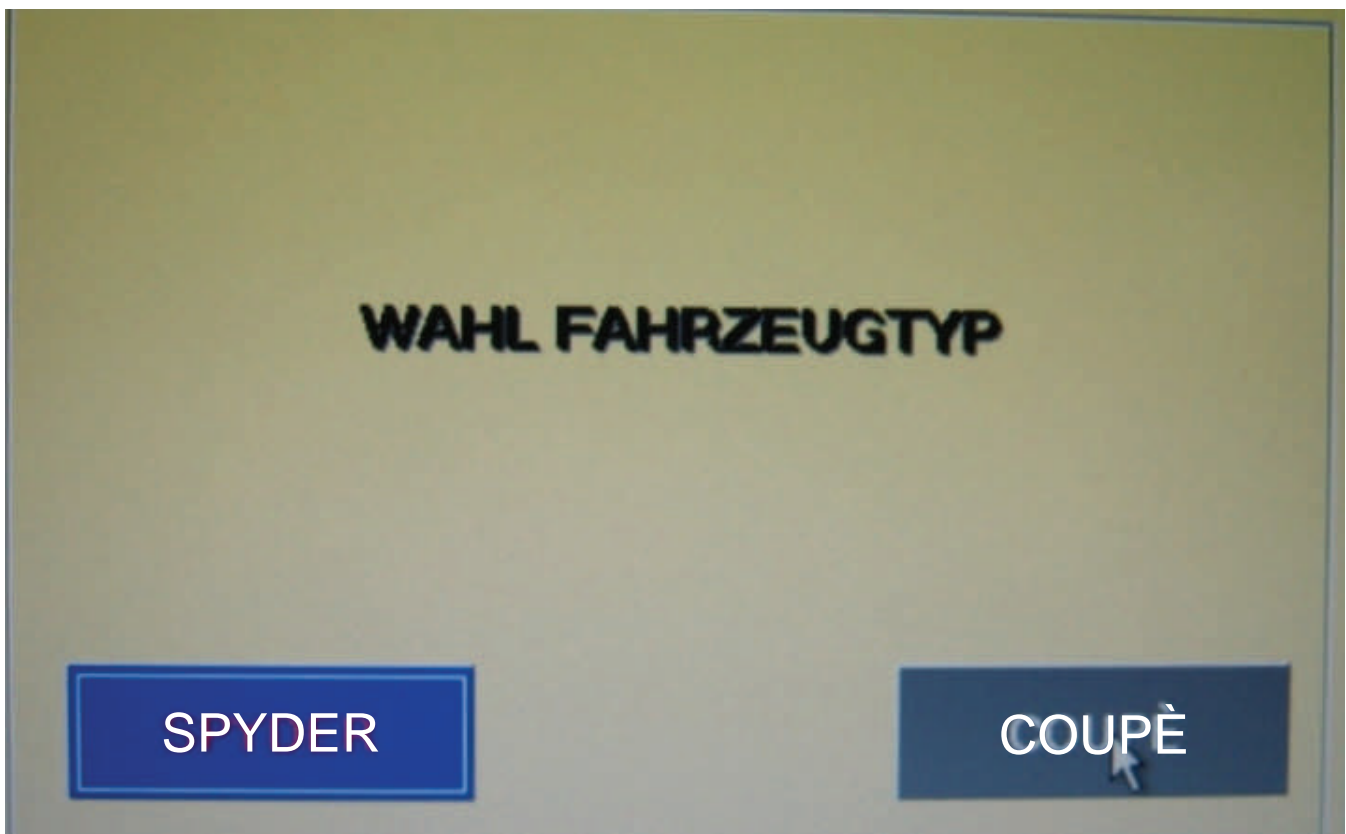


<b>Installation Instructions</b>		<b>KW</b> automotive
Instruction No.	686 43 002_1	

Select the control box of the Display ( CAN Digitek).  
 Pay attention to the model year.  
 -> Run test.

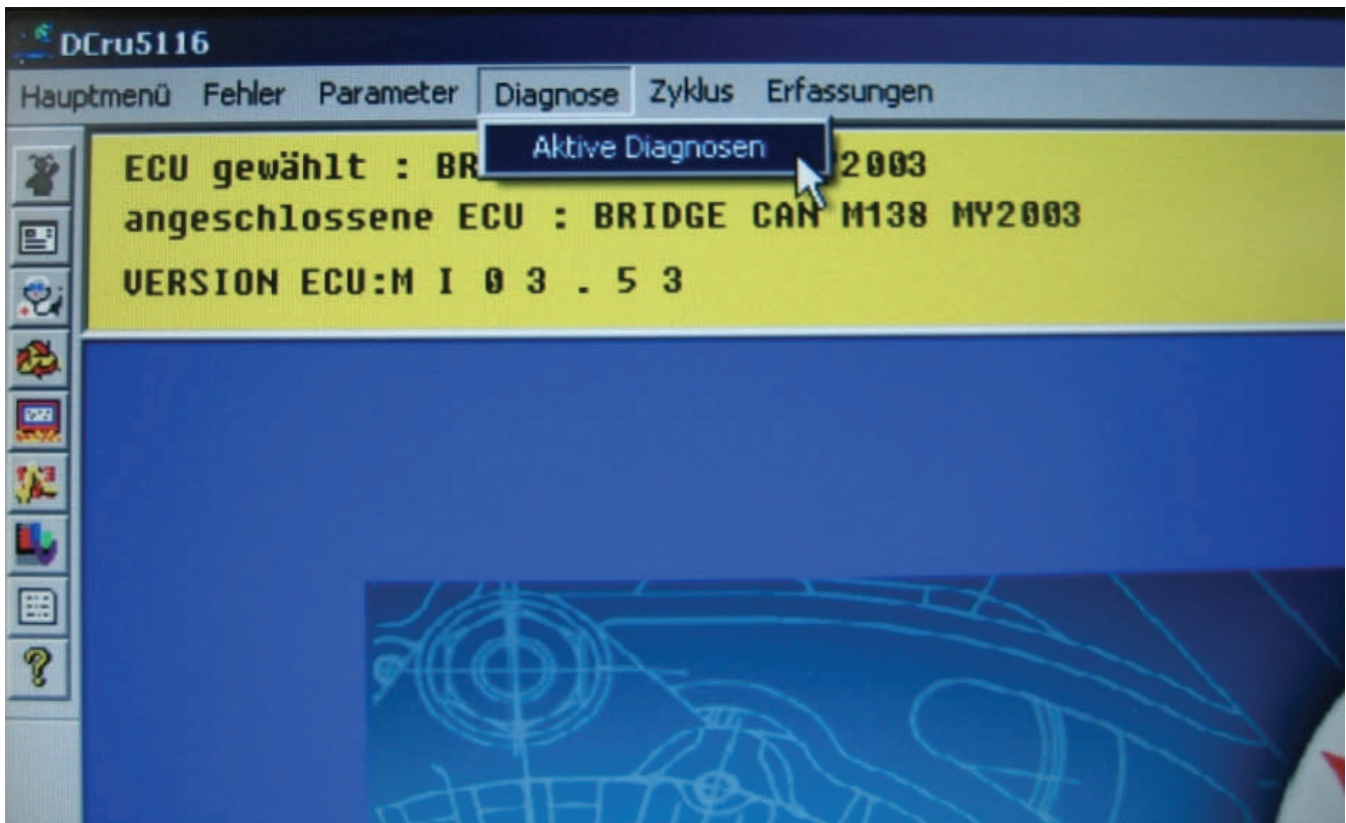


Select the model.

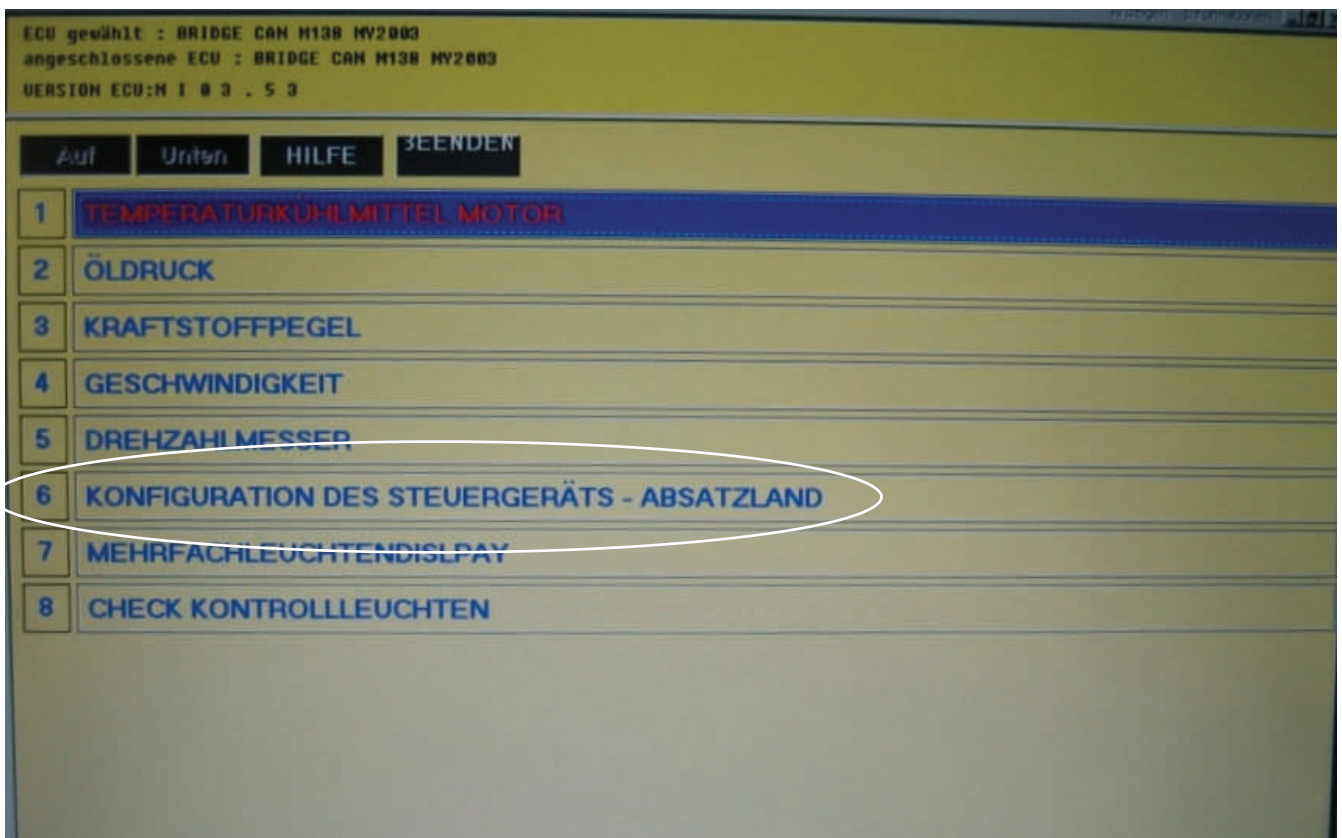


<b>Installation Instructions</b>		<b>KW</b> automotive
Instruction No.	686 43 002_1	

Select the "Acitiv Diagnostic" in the menu.



Select the "control box" in the menu.



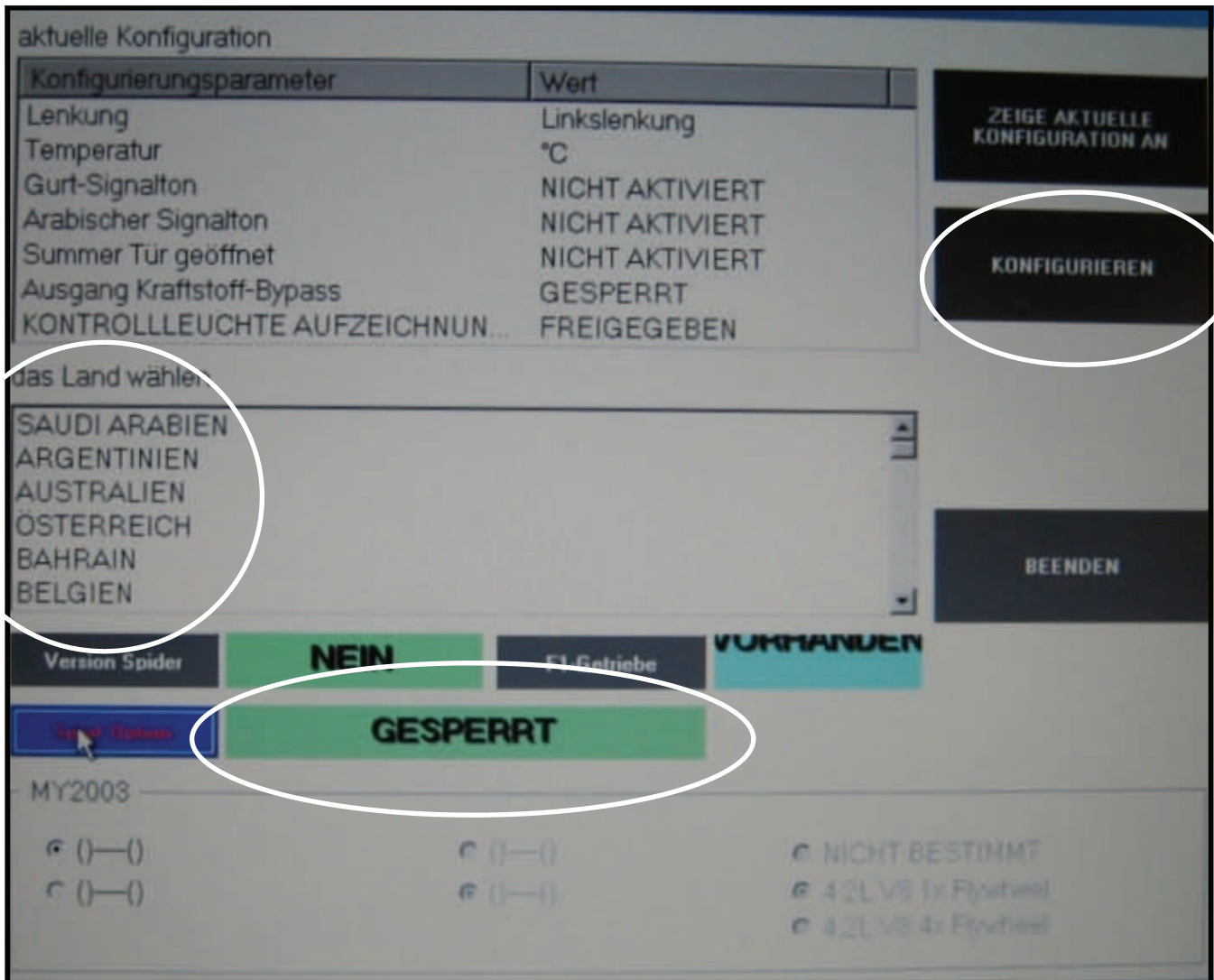
<b>Installation Instructions</b>		<b>KW</b> automotive
Instruction No.	686 43 002_1	

Select the Sport option and change from **RELEASING** to **CLOSED**. After

-> select „county“.

-> select „config“.

-> follow the instructions on the display.



After the configuration the electronic absorber regulation is permanent deactivated and in the display is indicated **POWER**.