



INSTALLATION INSTRUCTIONS



Installation Instructions		<i>KW automotive</i>
Instruction No.	685 10 430	

KW automotive

685 10 430

INSTALLATION INSTRUCTIONS

Cancellation kit

Installation Instructions		<i>KW automotive</i>
Instruction No.	685 10 430	

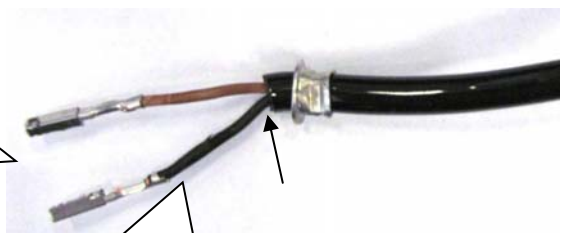
Front axle and Rear axle: Change all installed connectors against the supplied connector.



1. Dismantle the standard connector.



2. Open the connector lock. Remove the Standard wire out of the connector. Use a correct tool.



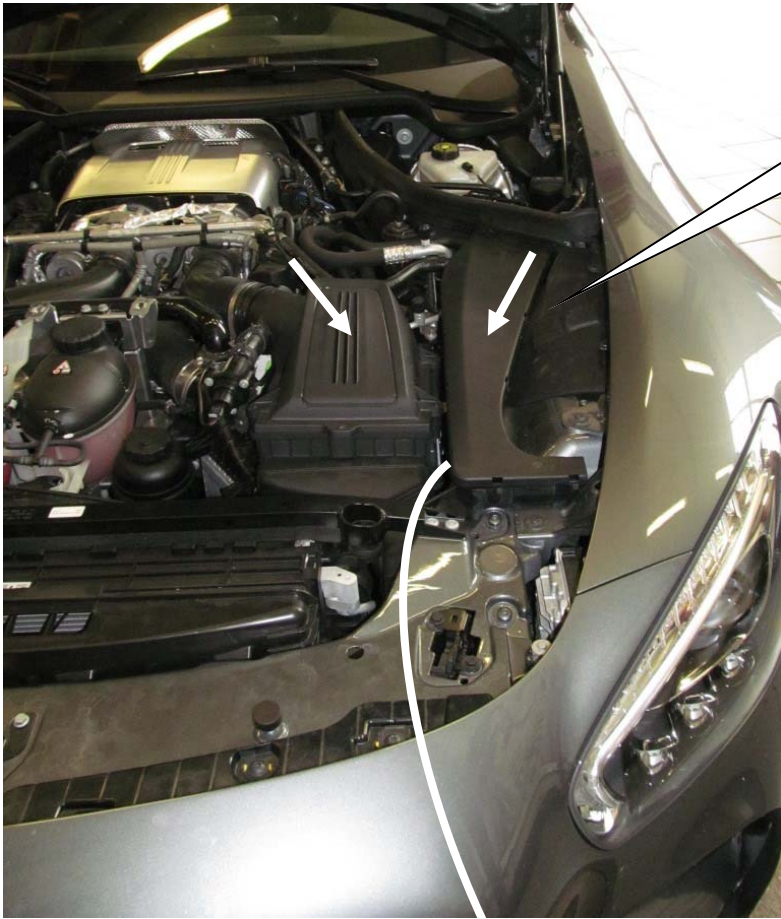
3. Remove the insulation carefully until the metal ring.

4. Insert the completed into the supplied connector until to the lock. The pinposition / cable colour is not relevant.



Installation Instructions		<i>KW automotive</i>
Instruction No.	685 10 430	

Front axle left:



Remove the cover on both sides.



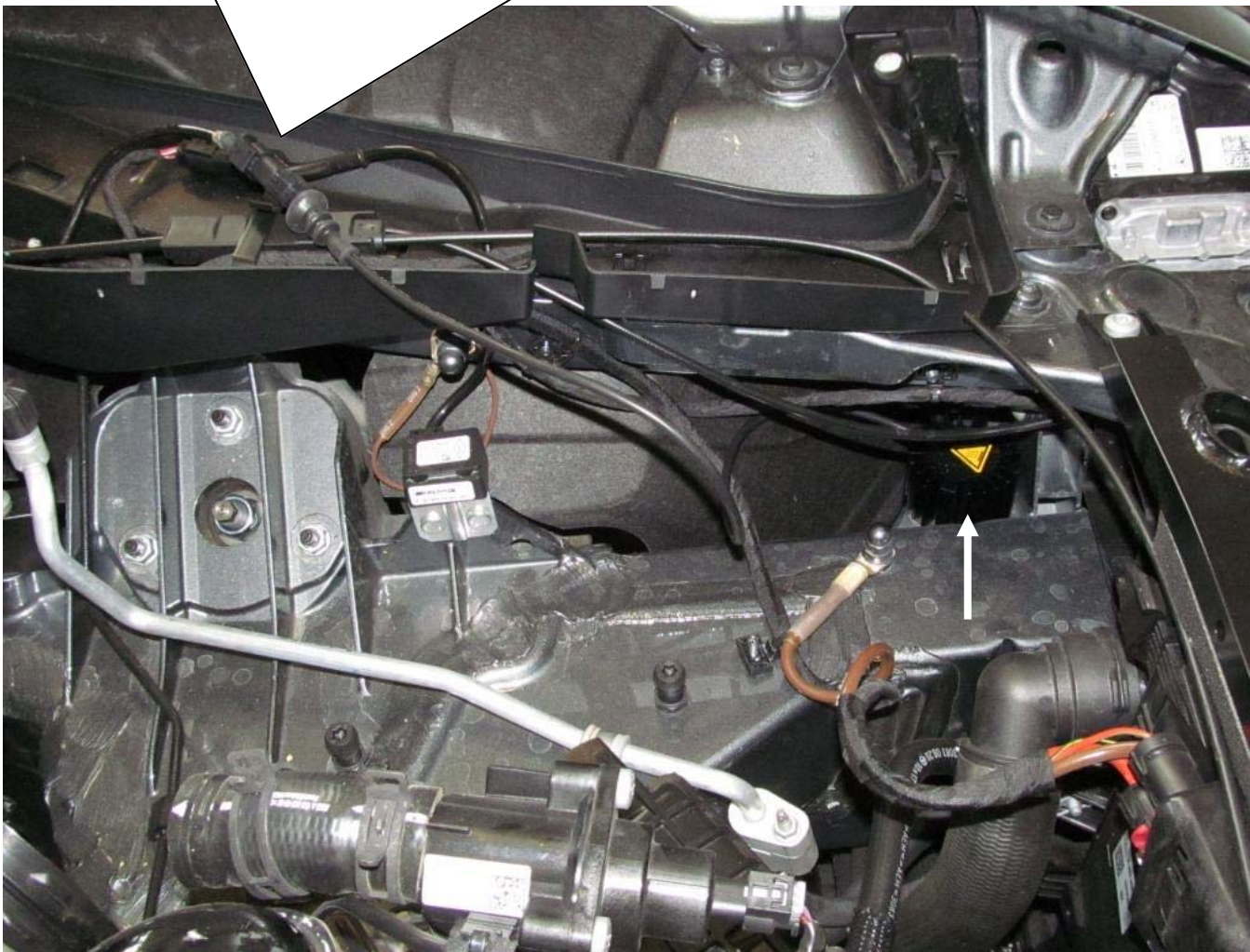
Installation Instructions		KW automotive	
Instruction No.	685 10 430		

Front axle left:

Fix the adhesive tapes on the electronic component. Please remove the marked cable tie!
IMPORTANT: Surface must be cleaned and degreased.



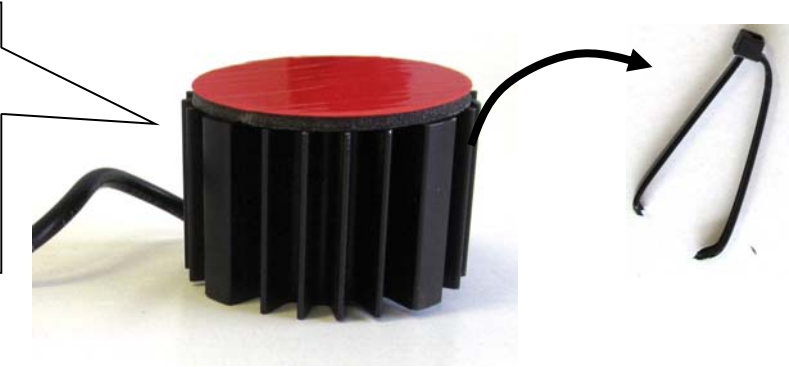
Run the standard damper control wire to the supplied electronic component connector. Insert the standard connector into the electronic component connector until it locks. Fix the canceller with supplied adhesive tape on the vehicle chassis.



Installation Instructions		<i>KW automotive</i>
Instruction No.	685 10 430	

Front axle right:

Fix the adhesive tapes on the electronic component. Please remove the marked cable tie!
IMPORTANT: Surface must be cleaned and degreased.



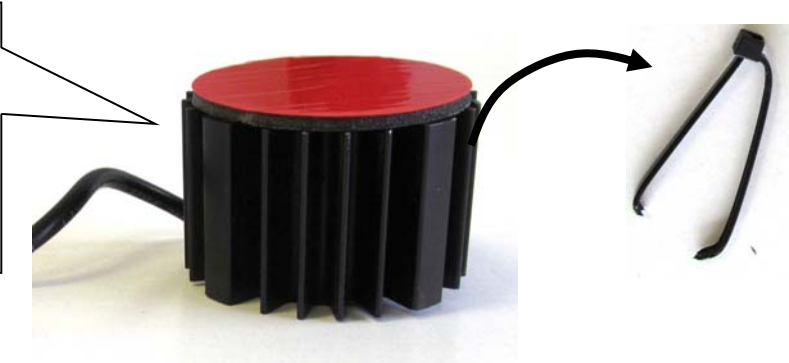
Run the standard damper control wire to the supplied electronic component connector. Insert the standard connector into the electronic component connector until it locks. Fix the canceller with supplied adhesive tape on the vehicle chassis.



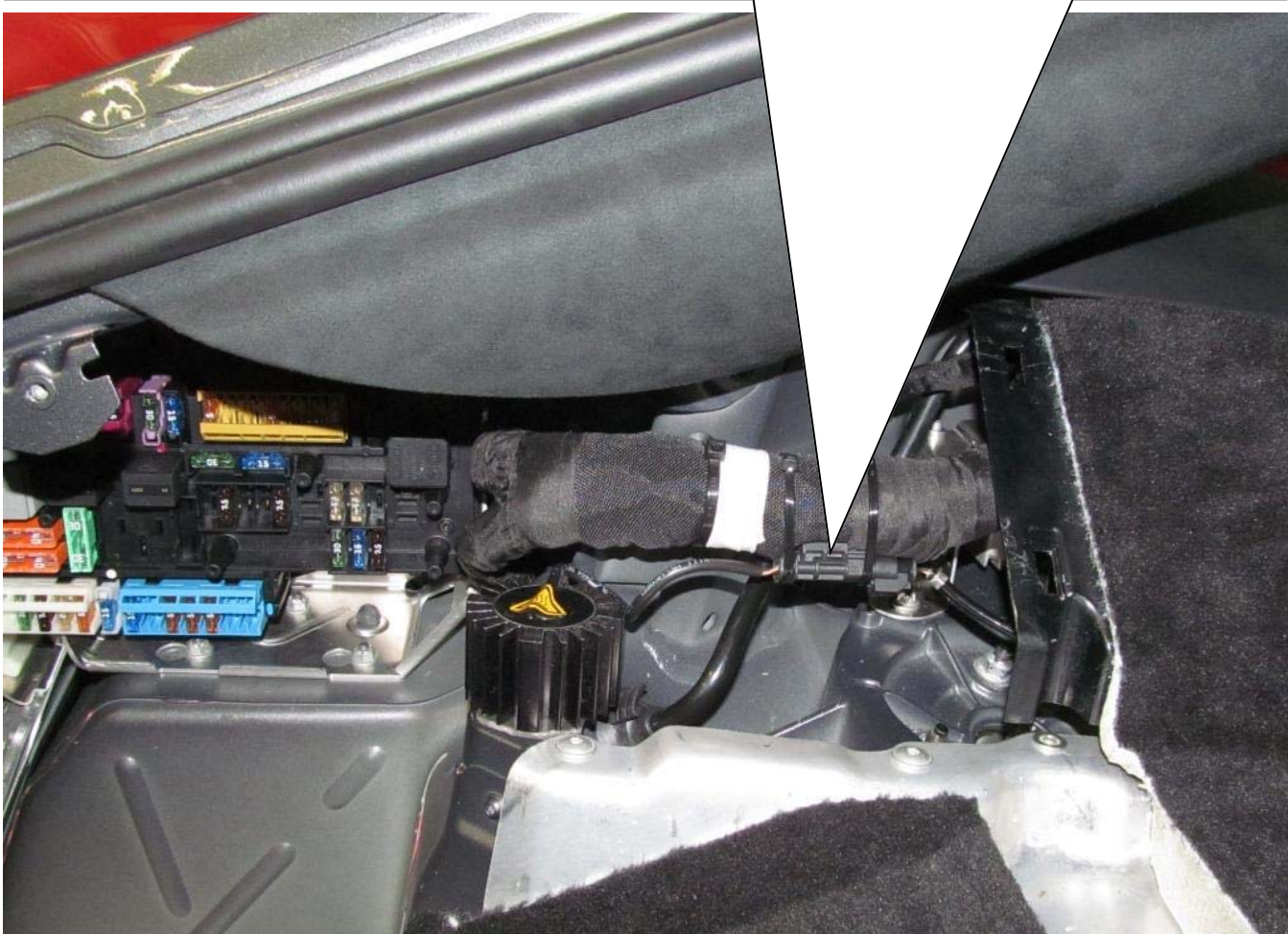
Installation Instructions		<i>KW automotive</i>
Instruction No.	685 10 430	

Rear axle left:

Fix the adhesive tapes on the electronic component. Please remove the marked cable tie!
IMPORTANT: Surface must be cleaned and degreased.



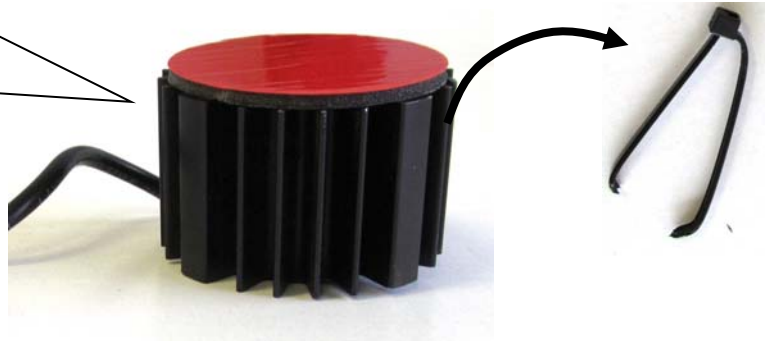
Run the standard damper control wire to the supplied electronic component connector. Insert the standard connector into the electronic component connector until it locks. Fix the canceller with supplied adhesive tape on the vehicle chassis.



Installation Instructions		<i>KW automotive</i>
Instruction No.	685 10 430	

Rear axle right:

Fix the adhesive tapes on the electronic component. Please remove the marked cable tie!
IMPORTANT: Surface must be cleaned and degreased.



Run the standard damper control wire to the supplied electronic component connector. Insert the standard connector into the electronic component connector until it locks. Fix the canceller with supplied adhesive tape on the vehicle chassis.

