



INSTALLATION INSTRUCTIONS



Installation Instructions		<i>KW automotive</i>
Instruction No.	685 10 118	

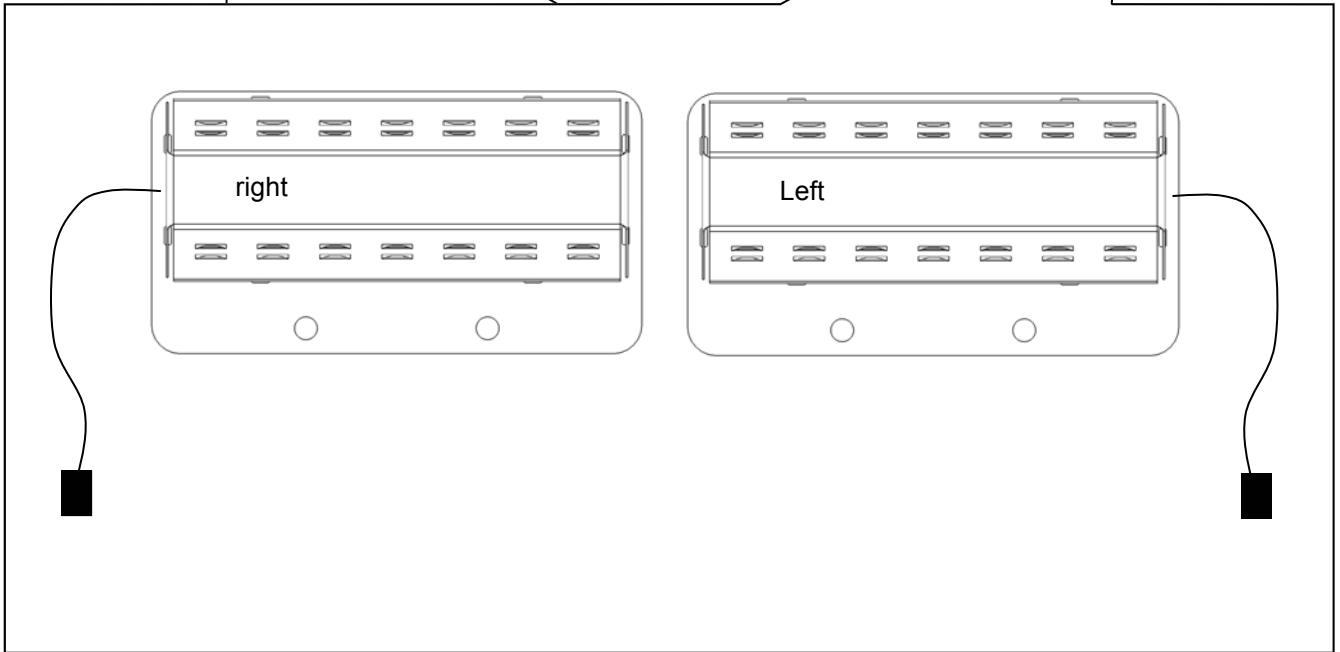
KW automotive

685 10 118

**INSTALLATION INSTRUCTIONS BMW
7-series type 765 [Cancellation kit](#)**

Installation Instructions		<i>KW automotive</i>
Instruction No.	685 10 118	

Front axle:



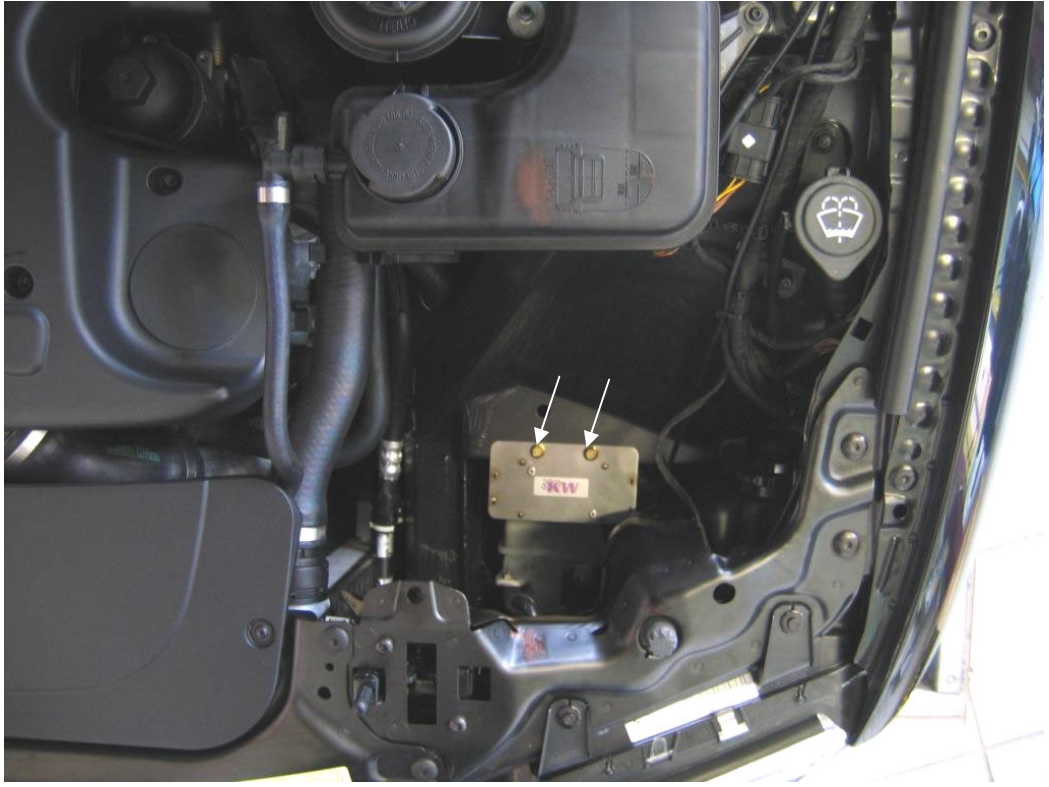
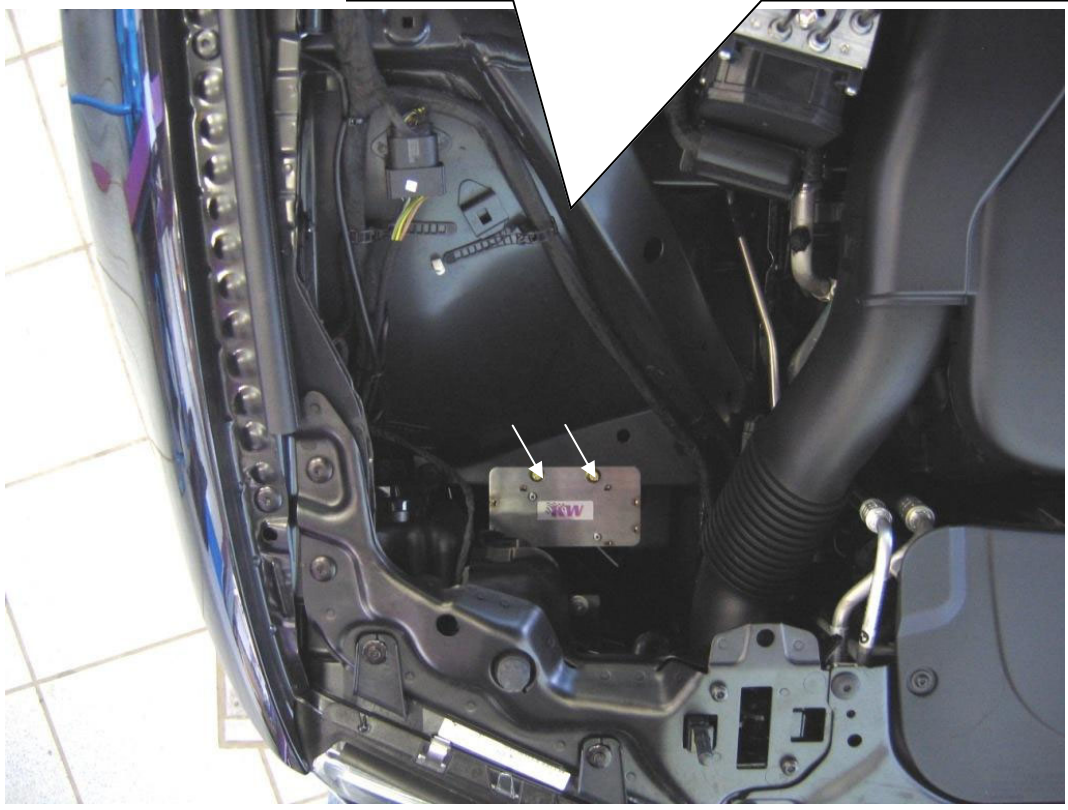
Installation Instructions		<i>KW automotive</i>	
Instruction No.	685 10 118		



Installation Instructions		<i>KW automotive</i>
Instruction No.	685 10 118	

Front axle:

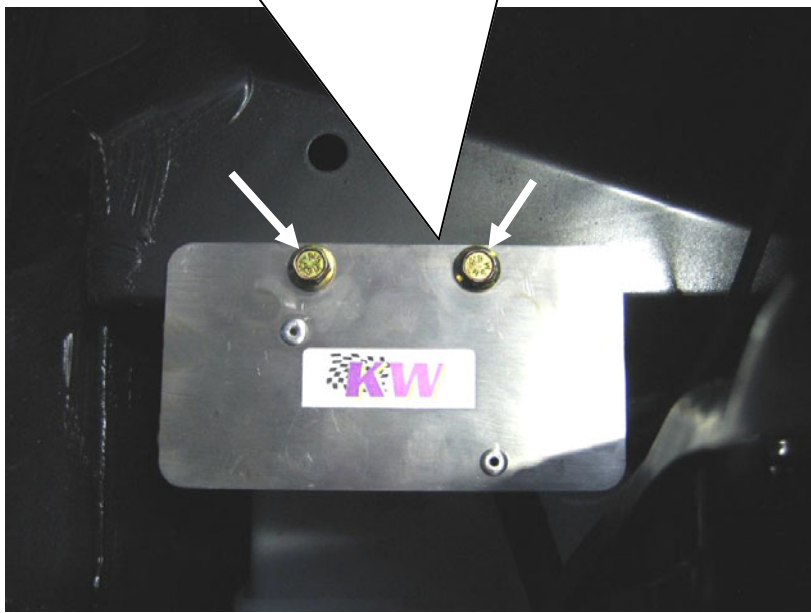
Please set the front axle electrical set centered onto the sheet of the car and mark the drilling points. After marking the spots with an X please use a 7 mm drill to drill the holes.



Installation Instructions		<i>KW automotive</i>
Instruction No.	685 10 118	

Front axle:

Fix the electronic kit with the supplied screws.



Connect the electronic kit with the original cable harness and fix the cable with the supplied cable ties on the marked points.



Installation Instructions		<i>KW automotive</i>	
Instruction No.	685 10 118		

Front axle:

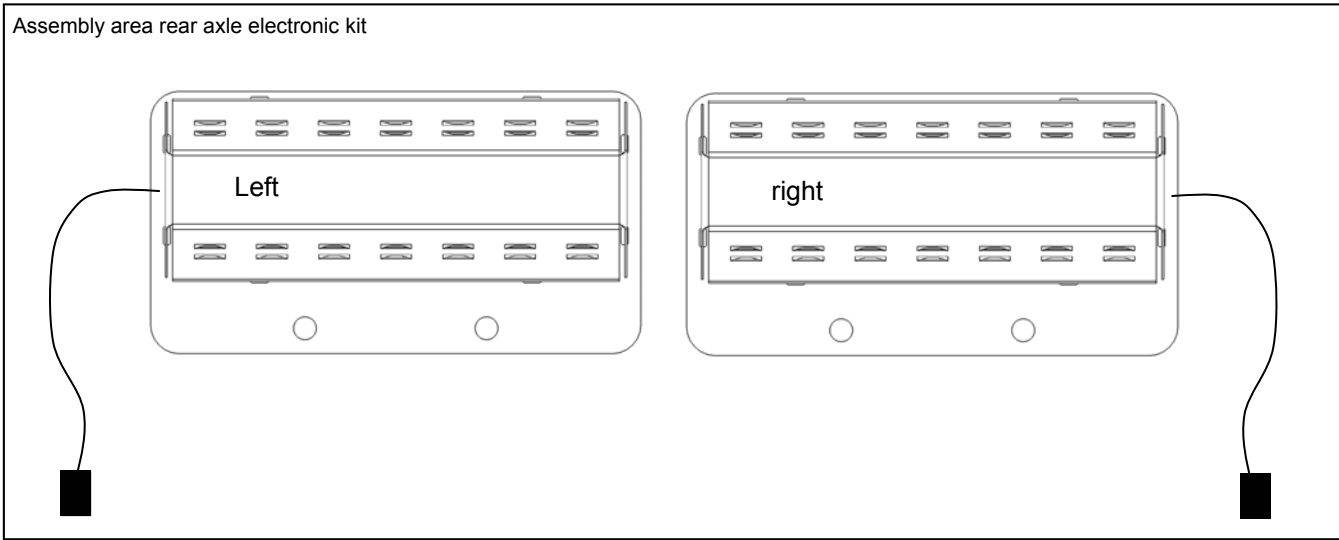


IMPORTANT: Please secure the connectors against crushes.

Installation Instructions		<i>KW automotive</i>
Instruction No.	685 10 118	

Rear axle:

Rear trunk



Installation Instructions		<i>KW automotive</i>
Instruction No.	685 10 118	

Rear axle:

Fix the rear axle electronic kit with the supplied tape and connect the cable with the original cable harness. **IMPORTANT: Surface must be cleaned and degreased.**

Left



Right

Lay the cable and fix it with the supplied cable ties on the marked points.