



## INSTALLATION INSTRUCTIONS

### 77-3077KP

### CHEVROLET / GMC

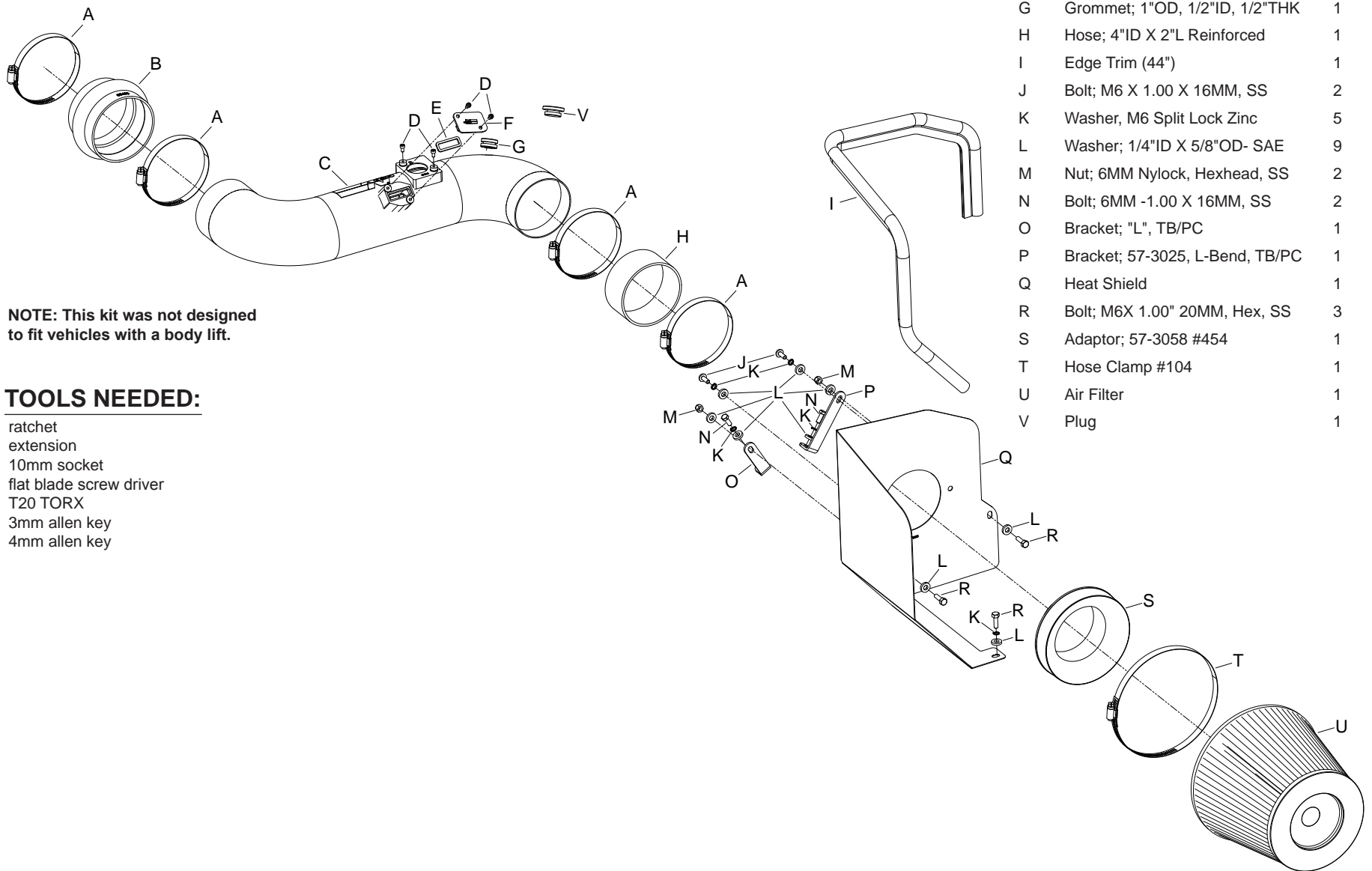
2011-14 Silverado 2500HD / 3500HD

2011-14 Sierra 2500HD / 3500HD

V8-6.6L Turbo Diesel

#### PARTS LIST:

Description	Qty.	Part #	
A	Hose Clamp #64 Stainless	4	08645
B	Hose; 4.0"ID To 4.19"ID X 3"L	1	08633
C	Intake Tube	1	27602KP
D	Bolt; M4-0.07 8MM, A/H, Cap,SS	4	07733
E	Gasket; Mass Air Sensor,57-9027	1	09076
F	Block Off Plate; Mass Air Sensor	1	21508
G	Grommet; 1"OD, 1/2"ID, 1/2"THK	1	08064
H	Hose; 4"ID X 2"L Reinforced	1	08761
I	Edge Trim (44")	1	102486
J	Bolt; M6 X 1.00 X 16MM, SS	2	07730
K	Washer, M6 Split Lock Zinc	5	1-3025
L	Washer; 1/4"ID X 5/8"OD- SAE	9	08275
M	Nut; 6MM Nylock, Hexhead, SS	2	07512
N	Bolt; 6MM -1.00 X 16MM, SS	2	07812
O	Bracket; "L", TB/PC	1	07805
P	Bracket; 57-3025, L-Bend, TB/PC	1	070952
Q	Heat Shield	1	073120
R	Bolt; M6X 1.00" 20MM, Hex, SS	3	07795
S	Adaptor; 57-3058 #454	1	27300
T	Hose Clamp #104	1	08697
U	Air Filter	1	RC-5179
V	Plug	1	09711



**NOTE:** This kit was not designed to fit vehicles with a body lift.

#### TOOLS NEEDED:

ratchet  
 extension  
 10mm socket  
 flat blade screw driver  
 T20 TORX  
 3mm allen key  
 4mm allen key

**NOTE: FAILURE TO FOLLOW INSTALLATION INSTRUCTIONS AND NOT USING THE PROVIDED HARDWARE MAY DAMAGE THE INTAKE TUBE, THROTTLE BODY AND ENGINE.**

#### TO START:

1. Turn off the ignition and disconnect the negative battery cable.

**NOTE: Disconnecting the negative battery cable erases pre-programmed electronic memories. Write down all memory settings before disconnecting the negative battery cable. Some radios will require an anti-theft code to be entered after the battery is reconnected. The anti-theft code is typically supplied with your owner's manual. In the event your vehicles anti-theft code cannot be recovered, contact an authorized dealership to obtain your vehicles anti-theft code.**



2. Disconnect the wiring harness junction connector located on the intercooler charge tube.

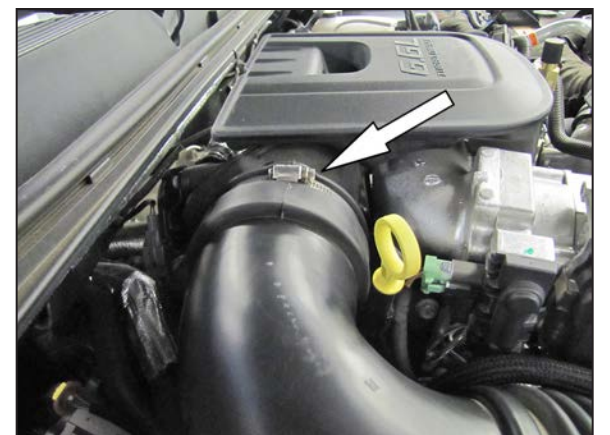


3. Disconnect the mass air sensors electrical connections and then move the harness to the side away from the intake tube.

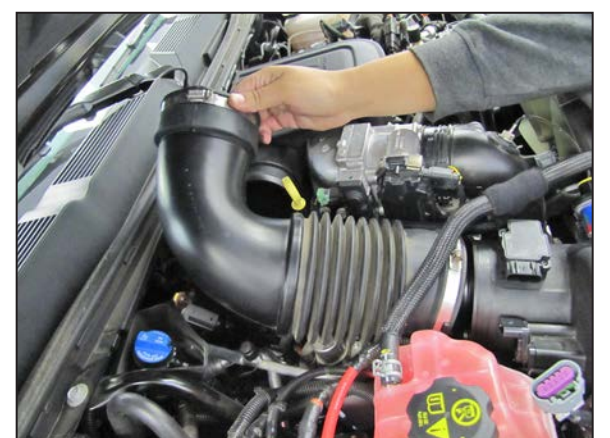
**NOTE: 2011-2012 model year vehicles will have one sensor, 2013 and later model year vehicles will have two sensors.**



4. Loosen the hose clamp that secures the intake tube to the factory air box.



5. Loosen the hose clamp that secures the intake tube to the turbo inlet pipe.



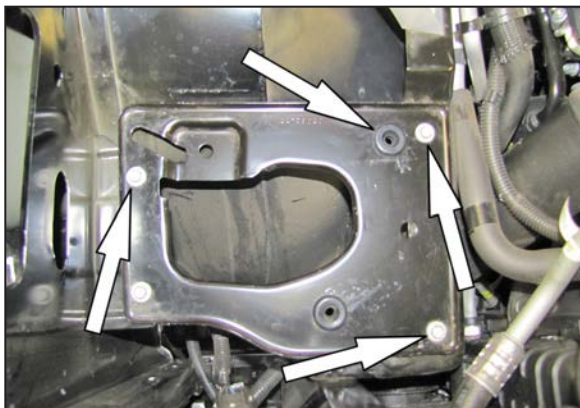
6. Remove the factory intake tube from the vehicle.



7. Lift up and remove the complete air box assembly from the vehicle.

**NOTE:** Use care when removing the air box so as not to damage the coolant hose.

**NOTE:** K&N Engineering, Inc., recommends that customers do not discard factory air intake.



8. Remove the three bolts and the grommet shown from the air box mounting plate.

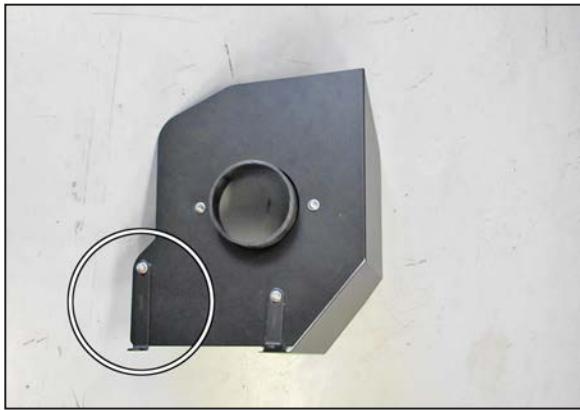
**NOTE:** These bolts will be reused in a later step.



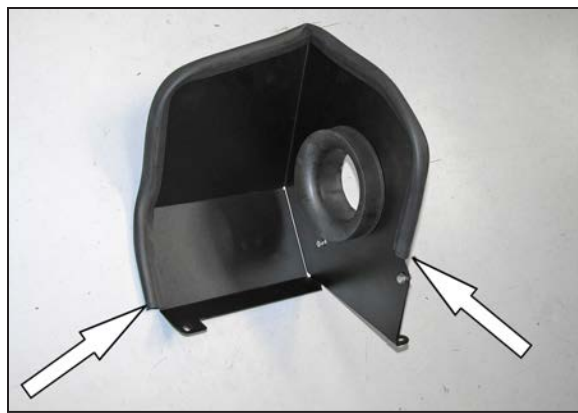
9. Install the filter adapter into the K&N® heat shield as shown using the provided hardware.



10. Install the provided "L" bracket (07805) onto the heat shield as shown using the provided hardware.



11. Install the provided "L" bracket (070952) onto the heat shield as shown using the provided hardware.



12. Install the provided edge trim onto the heat shield as shown.

**NOTE:** Some trimming of the edge trim will be necessary.



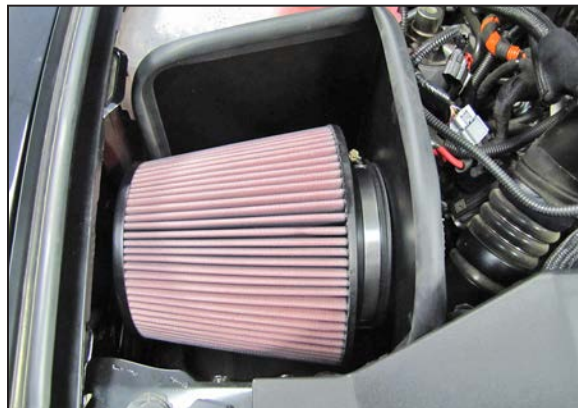
13. Install the K&N® heat shield onto the air box mounting plate and secure with the factory bolts from step #8.



14. Install the provided hump hose (08633) onto the turbo inlet pipe and secure with the provided hose clamp.



15. Install the provided hose (08761) onto filter adapter and secure with the provided hose clamp.



16. Install the K&N® air filter onto the filter adapter and secure with the provided hose clamp  
**NOTE:** Drycharger® air filter wrap; part # RC-5139DK is available to purchase separately.



17. Remove the Filter minder and MAF sensors from the factory air box.

**NOTE:** Some models may not be equipped with a filter minder.



18. Install the MAF sensors into the K&N® intake tube and secure with the provided hardware.  
**NOTE:** On 2012 and earlier model year vehicles, it will be necessary to use the block off plate and gasket in place of mass air sensor.



19. On vehicles that are equipped with a filter minder, install the provided grommet and the factory filter minder into the K&N® intake tube as shown. On vehicles not equipped with a filter minder, Install the provided plug.



20. Install the K&N® intake tube into the hump hose at the turbo inlet and then into the hose at the filter adapter. Align the tube for best fit and then secure with the provided hardware.



21. Reconnect the MAF sensor electrical connections and reconnect the harness connection on the intake charge tube.



22. Reconnect the vehicle's negative battery cable. Double check to make sure everything is tight and properly positioned before starting the vehicle.

23. The C.A.R.B. exemption sticker, (attached), must be visible under the hood so that an emissions inspector can see it when the vehicle is required to be tested for emissions. California requires testing every two years, other states may vary.

24. **NOTE:** Most General Motors vehicles have the Vehicle Emissions Certification Information (VECI) label affixed to the air filter box. In order to be compliant with California emissions laws, the label **MUST** remain in the engine compartment. If the Vehicle Emission Control Information label is removed during modification, a new replacement label must be obtained and installed in a readily visible position in the engine compartment. The label shall not be affixed to any equipment which is easily detached from the vehicle. We recommend that the label is affixed to the underside of the hood adjacent to the hood latch. The label is Vehicle Identification Number dependent and can be ordered from the vehicle dealership. In order to receive the proper decal please bring your VIN with you. Failure to have the VECI under the hood may result in failure of a pre-registration smog test.

25. It will be necessary for all K&N® high flow intake systems to be checked periodically for realignment, clearance and tightening of all connections. Failure to follow the above instructions or proper maintenance may void warranty.

#### ROAD TESTING:

1. Start the engine with the transmission in neutral or park, and the parking brake engaged. Listen for air leaks or odd noises. For air leaks secure hoses and connections. For odd noises, find cause and repair before proceeding. This kit will function identically to the factory system except for being louder and much more responsive.

2. Test drive the vehicle. Listen for odd noises or rattles and fix as necessary.

3. If road test is fine, you can now enjoy the added power and performance from your kit.

4. K&N Engineering, Inc., requires cleaning the intake system's air filter element every 100,000 miles. When used in dusty or off-road environments, our filters will require cleaning more often. We recommend that you visually inspect your filter once every 25,000 miles to determine if the screen is still visible. When the screen is no longer visible some place on the filter element, it is time to clean it. To clean and re-oil, purchase our filter Recharger® service kit, part number 99-5050 or 99-5000 and follow the easy instructions.