



INSTALLATION INSTRUCTIONS

77-3076KTK

CHEVROLET / GMC

2011-2013 Silverado 2500HD / 3500HD

2011-2013 Sierra 2500HD / 3500HD

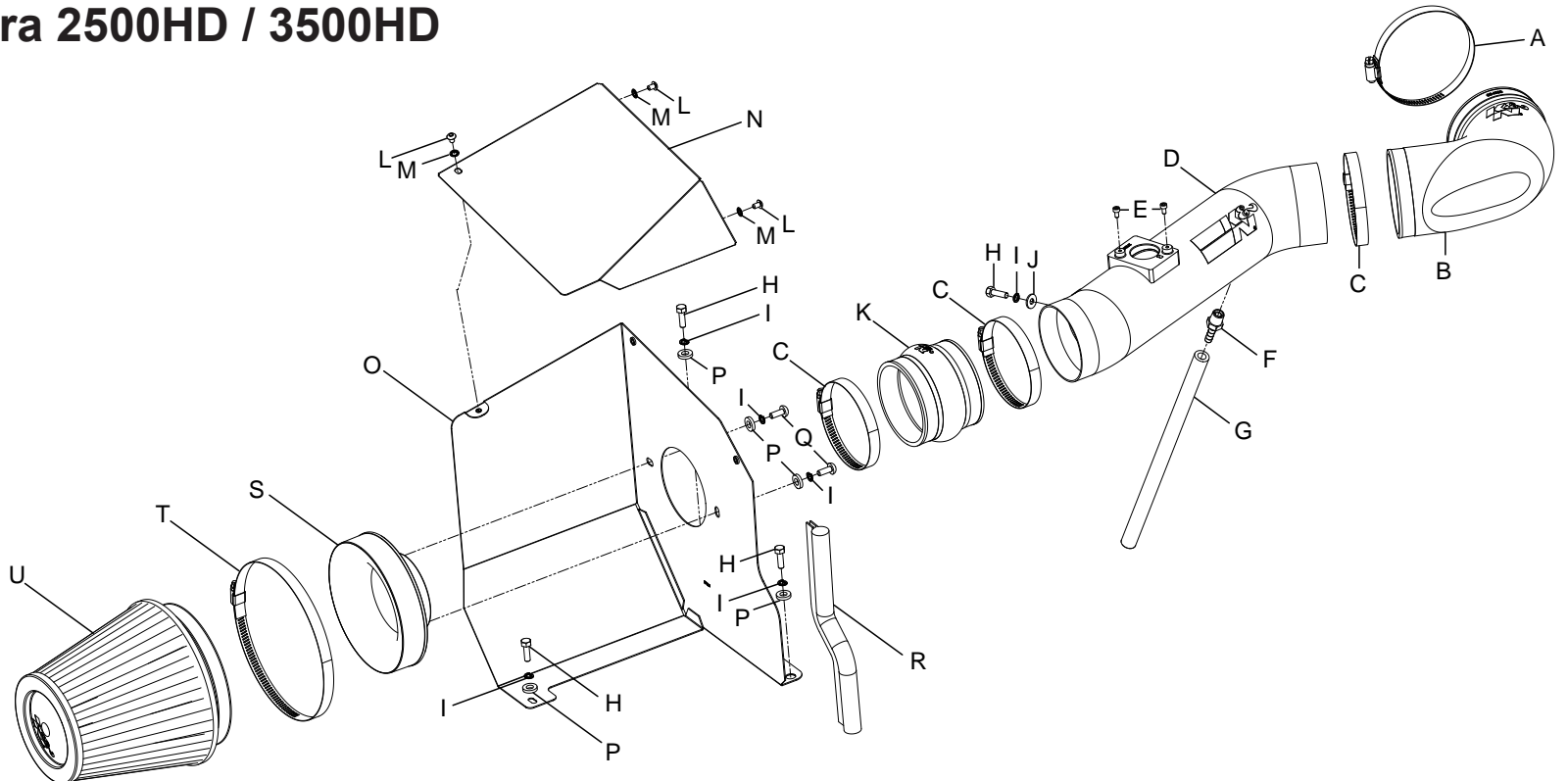
V8-6.0L

NOTE: This kit was not designed to fit vehicles with a body lift.

TOOLS NEEDED:

Ratchet
Extension
10mm socket
Flat blade screw driver
Phillips screw driver
t15 torx
9/16" wrench
4mm Allen
3mm allen

PARTS LIST:



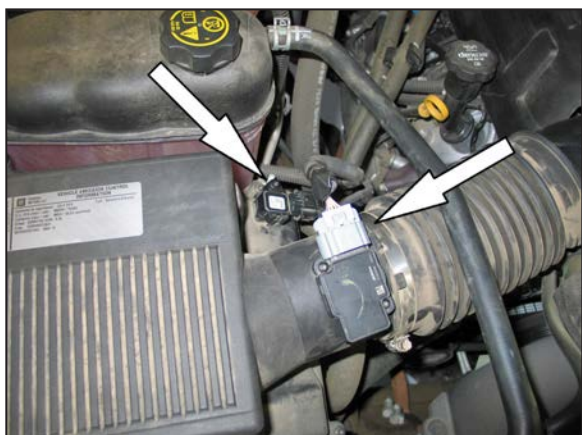
Description	Qty.	Part #	Description	Qty.	Part #
A Hose Clamp #64 Stainless	1	08645	L Bolt; M5 X .8 X 8MM, Buttonhead, SS	3	07740
B Hose; 4" To 3-1/2"ID 106DEG Angled Molded	1	084053	M Washer;5MM Internal Star Cut Lock	3	07724
C Hose Clamp #56	3	08620	N Heat Shield Lid	1	074093
D Intake Tube	1	27572TK	O Heat Shield	1	07384
E Bolt; M4-0.07 8MM, A/H Cap, SS	2	07733	P Washer; 1/4"ID X 5/8" OD- SAE	5	08275
F Vent; STRT, 3/8" Hose, 1/4" NPT, PLAS	1	08047	Q Bolt; M6 X 1.00 X 16MM, Buttonhead, SS	2	07730
G Hose 3/8" ID X 12"L	1	08412	R Edge Trim (11")	1	102468
H Bolt; M6 X 1.00" X 20MM Hex, SS	4	07795	S Adapter; Universal, 6" Filter 3.5" Coupler	1	21512-1
I Washer; M6 Split Lock Zinc	6	1-3025	T Hose Clamp # 104	1	08697
J Washer; 6MM Flat, SS	1	08269	U Air filter	1	RF-1042XD
K Hose; 3-1/2"ID X 3" L Hump Molded	1	084057			

NOTE: FAILURE TO FOLLOW INSTALLATION INSTRUCTIONS AND NOT USING THE PROVIDED HARDWARE MAY DAMAGE THE INTAKE TUBE, THROTTLE BODY AND ENGINE.

TO START:

1. Turn off the ignition and disconnect the negative battery cable.

NOTE: Disconnecting the negative battery cable erases pre-programmed electronic memories. Write down all memory settings before disconnecting the negative battery cable. Some radios will require an anti-theft code to be entered after the battery is reconnected. The anti-theft code is typically supplied with your owner's manual. In the event your vehicles' anti-theft code cannot be recovered, contact an authorized dealership to obtain your vehicles anti-theft code.



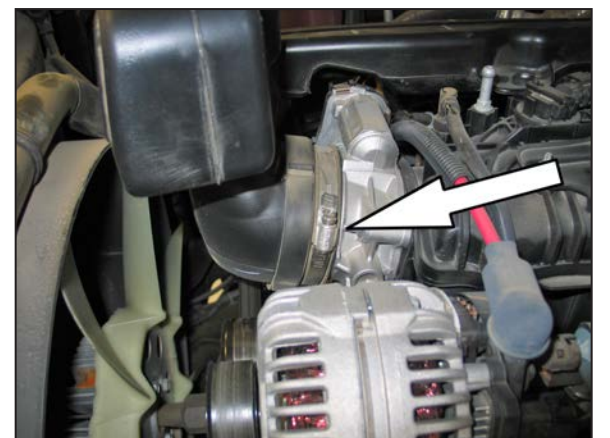
2. Disconnect the mass air sensor and pressure sensor electrical connections shown.



3. Lift up and remove the engine cover as shown.



4. Disconnect the crank case vent hose from the intake tube plenum.



5. Loosen the hose clamp securing the intake tube to the throttle body.



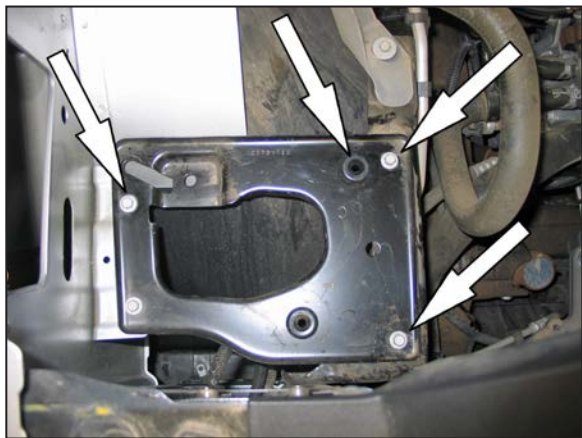
6. Loosen the hose clamp securing the intake tube to the air box housing and disconnect the radiator hose retaining clip from the intake tube. Then remove the intake tube from the vehicle.



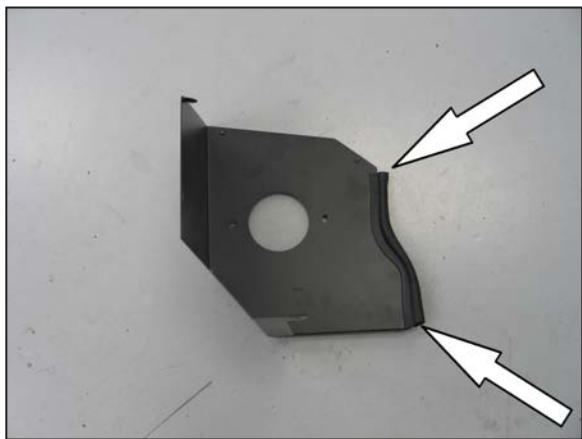
7. Rotate the crank case vent hose counter clockwise to access the retaining clip on the valve cover, release the clip and then remove the hose from the valve cover port.



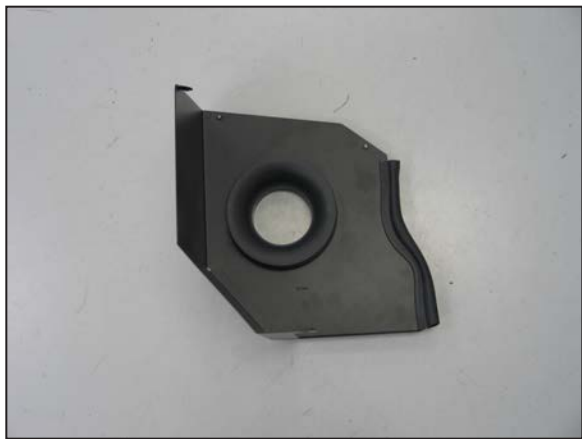
8. Lift up and remove the factory air box from the vehicle.
NOTE: K&N Engineering, Inc., recommends that customers do not discard factory air intake



9. Remove the three bolts shown and the rubber grommet shown from the air box mounting plate.



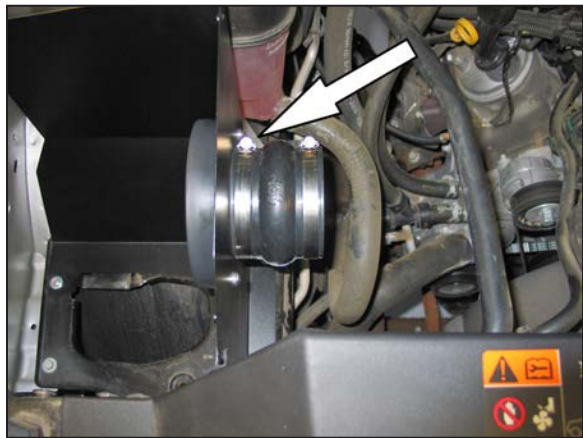
10. Install the provided edge trim onto the heat shield as shown.
NOTE: Some trimming of the edge trim will be necessary.



11. Install the provided filter adapter into the heat shield and secure with the provided hardware.



12. Install the heat shield onto the air box mounting plate and secure with the provided hardware to the factory mounting locations.
NOTE: It may be necessary to loosen the bolt securing the coolant reservoir and adjust the mounting bracket.



13. Install the provided hump hose (084057) onto the radius adapter and secure with the provided hose clamp.



14. Install the provided NPT vent fitting into the K&N intake tube as shown.



15. Remove the screws securing the mass air sensor and pressure sensor into the factory air box lid and then remove the sensors.



16. Install the sensors into the K&N intake tube and secure with the provided hardware.



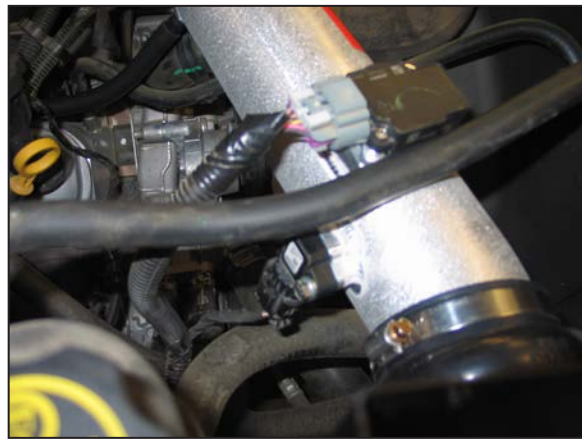
17. Install the provided angle hose onto the K&N intake tube as shown.
NOTE: Do not tighten the hose clamp at this time.



18. Install the K&N intake tube assembly onto the filter adapter and then the throttle body. Adjust the tube and hose for proper fit and then tighten the hose clamps.



19. Connect the provided crank case vent hose the fitting installed into the K&N intake tube and then connect the open end to the valve cover port.



20. Connect the mass air sensor and pressure sensor electrical connections.



21. Install the K&N air filter and secure with the provided hose clamp.



22. Install the air box lid and secure with the provided hardware.



23. Reinstall the engine cover.



24. Reconnect the vehicle's negative battery cable. Double check to make sure everything is tight and properly positioned before starting the vehicle.

25. The C.A.R.B. exemption sticker, (attached), must be visible under the hood so that an emissions inspector can see it when the vehicle is required to be tested for emissions. California requires testing every two years, other states may vary.

26. **NOTE:** Most General Motors vehicles have the Vehicle Emissions Certification Information (VECI) label affixed to the air filter box. In order to be compliant with California emissions laws, the label **MUST** remain in the engine compartment. If the Vehicle Emission Control Information label is removed during modification, a new replacement label must be obtained and installed in a readily visible position in the engine compartment. The label shall not be affixed to any equipment which is easily detached from the vehicle. We recommend that the label is affixed to the underside of the hood adjacent to the hood latch. The label is Vehicle Identification Number dependent and can be ordered from the vehicle dealership. In order to receive the proper decal please bring your VIN with you. Failure to have the VECI under the hood may result in failure of a pre-registration smog test.

27. It will be necessary for all K&N® high flow intake systems to be checked periodically for realignment, clearance and tightening of all connections. Failure to follow the above instructions or proper maintenance may void warranty.

ROAD TESTING:

1. Start the engine with the transmission in neutral or park, and the parking brake engaged. Listen for air leaks or odd noises. For air leaks secure hoses and connections. For odd noises, find cause and repair before proceeding. This kit will function identically to the factory system except for being louder and much more responsive.

2. Test drive the vehicle. Listen for odd noises or rattles and fix as necessary.

3. If road test is fine, you can now enjoy the added power and performance from your kit.

4. K&N Engineering, Inc., requires cleaning the intake system's air filter element every 100,000 miles. When used in dusty or off-road environments, our filters will require cleaning more often. We recommend that you visually inspect your filter once every 25,000 miles to determine if the screen is still visible. When the screen is no longer visible some place on the filter element, it is time to clean it. To clean and re-oil, purchase our filter Recharger® service kit, part number 99-5050 or 99-5000 and follow the easy instructions.