



## INSTALLATION INSTRUCTIONS

### 77-2574KS

### FORD

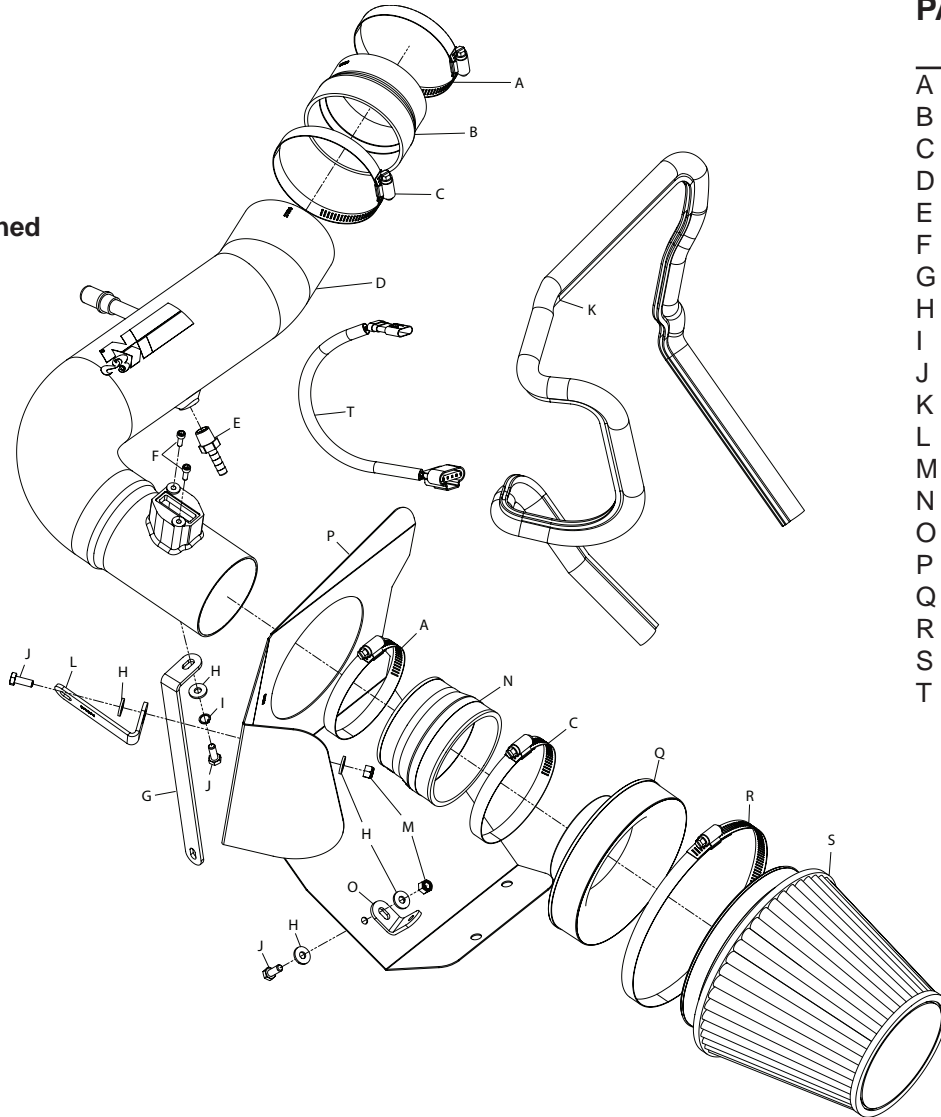
### 2007-10 Edge

### V6-3.5L

**NOTE:** This kit was not designed to fit vehicles with a body lift.

#### TOOLS NEEDED:

Pliers  
Ratchet  
Extension  
10mm Socket  
8mm Socket  
10mm Wrench  
Flat Blade Screwdriver  
9/64" Wrench  
T20 Torx Socket



#### PARTS LIST:

Description	Qty.	Part #
A Hose Clamp #52	2	08610
B 3.25"ID TO 3.50"ID X 2.25"L	1	084091
C Hose Clamp #56	2	08620
D Intake Tube	1	27518
E Vent; Strt, 3/8"Hose, 1/4"NPT	1	08047
F Bolt; M4-0.07 8MM, A/H CAP	2	07733
G Bracket, "L", Long	1	070095
H Washer; 1/4"ID X 5/8"OD	5	08275
I Washer; 1/4" LOCK, ZN	1	08198
J Bolt; 6MM-1.00 X 16MM, SS	3	07812
K Edge trim (48")	1	102485
L Bracket; "L", Angled	1	070094
M Nut; 6MM Nylock, Hexhead	2	07512
N Hose; 3-1/2" to 3-1/4"idx2-1/2"L	1	08051
O Bracket; "L", Short	1	070066
P Heat Shield	1	07688
Q Adapter	1	21512-1
R Hose Clamp #104	1	08697
S Air Filter	1	RF-1042
T Wire Harness	1	21780

**NOTE: FAILURE TO FOLLOW INSTALLATION INSTRUCTIONS AND NOT USING THE PROVIDED HARDWARE MAY DAMAGE THE INTAKE TUBE, THROTTLE BODY AND ENGINE.**

#### TO START:

1. Turn off the ignition and disconnect the negative battery cable.

**NOTE:** Disconnecting the negative battery cable erases pre-programmed electronic memories. Write down all memory settings before disconnecting the negative battery cable. Some radios will require an anti-theft code to be entered after the battery is reconnected. The anti-theft code is typically supplied with your owner's manual. In the event your vehicles' anti-theft code cannot be recovered, contact an authorized dealership to obtain your vehicles anti-theft code.



2. Release the red locking tab and then disconnect the mass air sensor electrical connection.



3. Disconnect the EVAP hose shown from the intake tube.



4. Rotate the locking tap and then disconnect the crankcase vent hose from the stock intake tube.



5. Loosen the hose clamp which secures the intake hose to the airbox. Remove the airbox mounting bolt shown.



6. Remove the airbox from the vehicle. **NOTE:** Be sure to unhook the mass air sensor wiring harness from the airbox.



7. Loosen the hose clamp which secures the stock intake tube to the throttle body and then remove the intake tube from the vehicle.

**NOTE:** K&N Engineering, Inc., recommends that customers do not discard factory air intake.



8. Remove the two bolts which secure the airbox mounting bracket to the inner fender.

**NOTE:** These bolts will be reused in a later step.



9. Remove the transmission pan bolt shown. **NOTE:** This bolt will be reused in the next step.



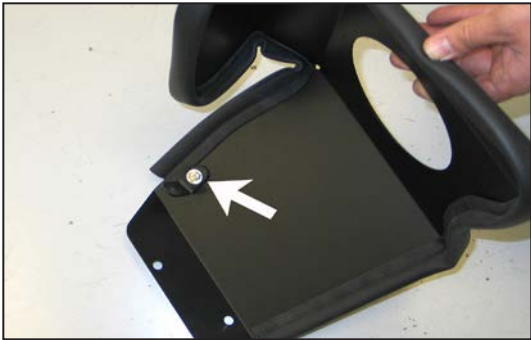


10. Install the intake tube mounting bracket (070095) onto the transmission pan and secure with the factory bolt removed in step #9.



11. Install the provided edge trim onto the heat shield as shown.

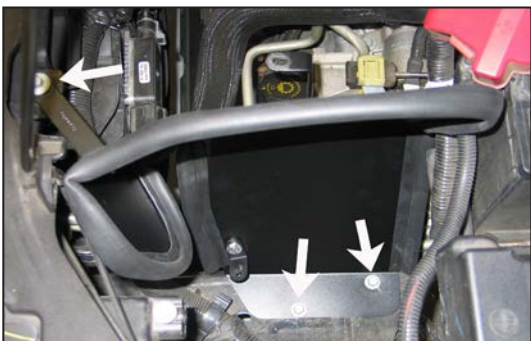
**NOTE: Some trimming of the edge trim will be necessary.**



12. On 2007 and 2008 model vehicles, install the "L" bracket (070066) onto the heat shield using the provided hardware as shown.

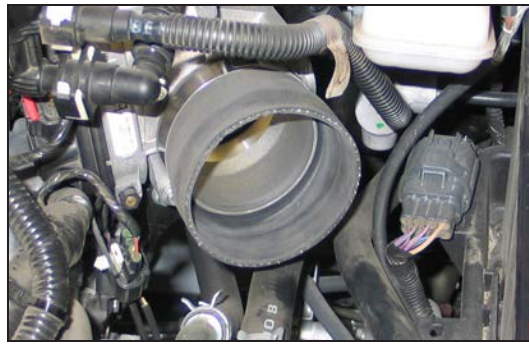


13. Install the provided "L" bracket (070094) onto the heat shield using the provided hardware as shown.



14. Install the heat shield into position on the inner fender and secure with the factory airbox mounting bracket bolts removed in step #8. Secure the heat shield mounting bracket to the airbox mounting bracket location on the core support using the factory bolt removed in step #5.

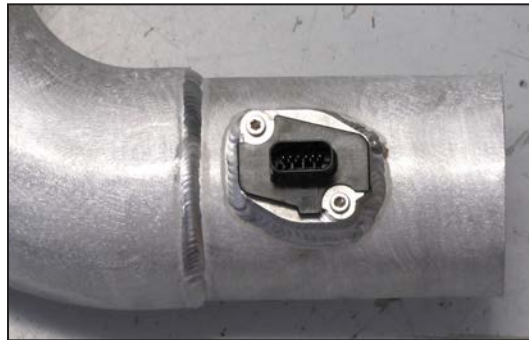
**NOTE: On 2007 and 2008 model year vehicles, secure the wiring harness to the "L" bracket installed during step #12.**



15. Install the silicone hose (08051) onto the throttle body and secure with the provided hose clamp.



16. Remove the two screws securing the mass air sensor to the airbox and then remove the mass air sensor from the airbox.



17. Install the mass air sensor into the K&N® intake tube and secure with the provided screws.



18. Install the provided 1/4npt fitting into the K&N® intake tube as shown.

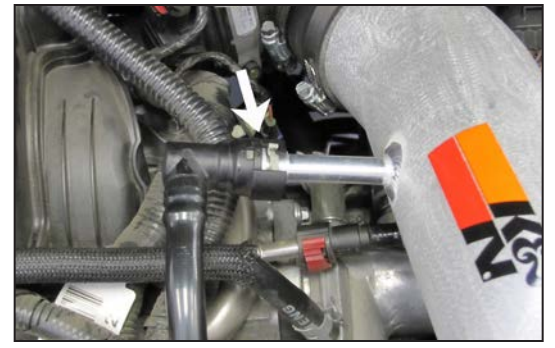
**NOTE: Plastic NPT fittings are easy to cross thread. Install the vent fitting "hand" tight, then turn it two complete turns with a wrench.**



19. Install the K&N® intake tube into the silicone hose at the throttle body and align with the mounting bracket installed in step #10. Secure the intake tube with hose clamp and hardware provided.



20. Connect the EVAP hose to the 1/4npt fitting as shown.



21. Connect the crankcase vent hose to the quick connect fitting on the K&N® intake tube as shown.



22. Install the filter adapter into the K&N® air filter and secure with the provided hose clamp.



23. Install the silicone (084091) hose onto the filter adapter and secure with the provided hose clamp.



24. Install the filter assembly onto the intake tube and secure with the provided hose clamp.  
**NOTE: Drycharger® air filter wrap; part # RF-1042DK is available to purchase separately.**



25. Using the provided mass air sensor extension harness, reconnect the mass air sensor electrical connection.



26. Reconnect the vehicle's negative battery cable. Double check to make sure everything is tight and properly positioned before starting the vehicle.

27. The C.A.R.B. exemption sticker, (attached), must be visible under the hood so that an emissions inspector can see it when the vehicle is required to be tested for emissions. California requires testing every two years, other states may vary.

28. It will be necessary for all K&N® high flow intake systems to be checked periodically for realignment, clearance and tightening of all connections. Failure to follow the above instructions or proper maintenance may void warranty.

#### ROAD TESTING:

1. Start the engine with the transmission in neutral or park, and the parking brake engaged. Listen for air leaks or odd noises. For air leaks secure hoses and connections. For odd noises, find cause and repair before proceeding. This kit will function identically to the factory system except for being louder and much more responsive.

2. Test drive the vehicle. Listen for odd noises or rattles and fix as necessary.

3. If road test is fine, you can now enjoy the added power and performance from your kit.

4. K&N Engineering, Inc., suggests checking the air filter element periodically for excessive dirt build-up. When the element becomes covered in dirt (or once a year), service it according to the instructions on the Recharger® service kit, part number 99-5050 or 99-5000.