



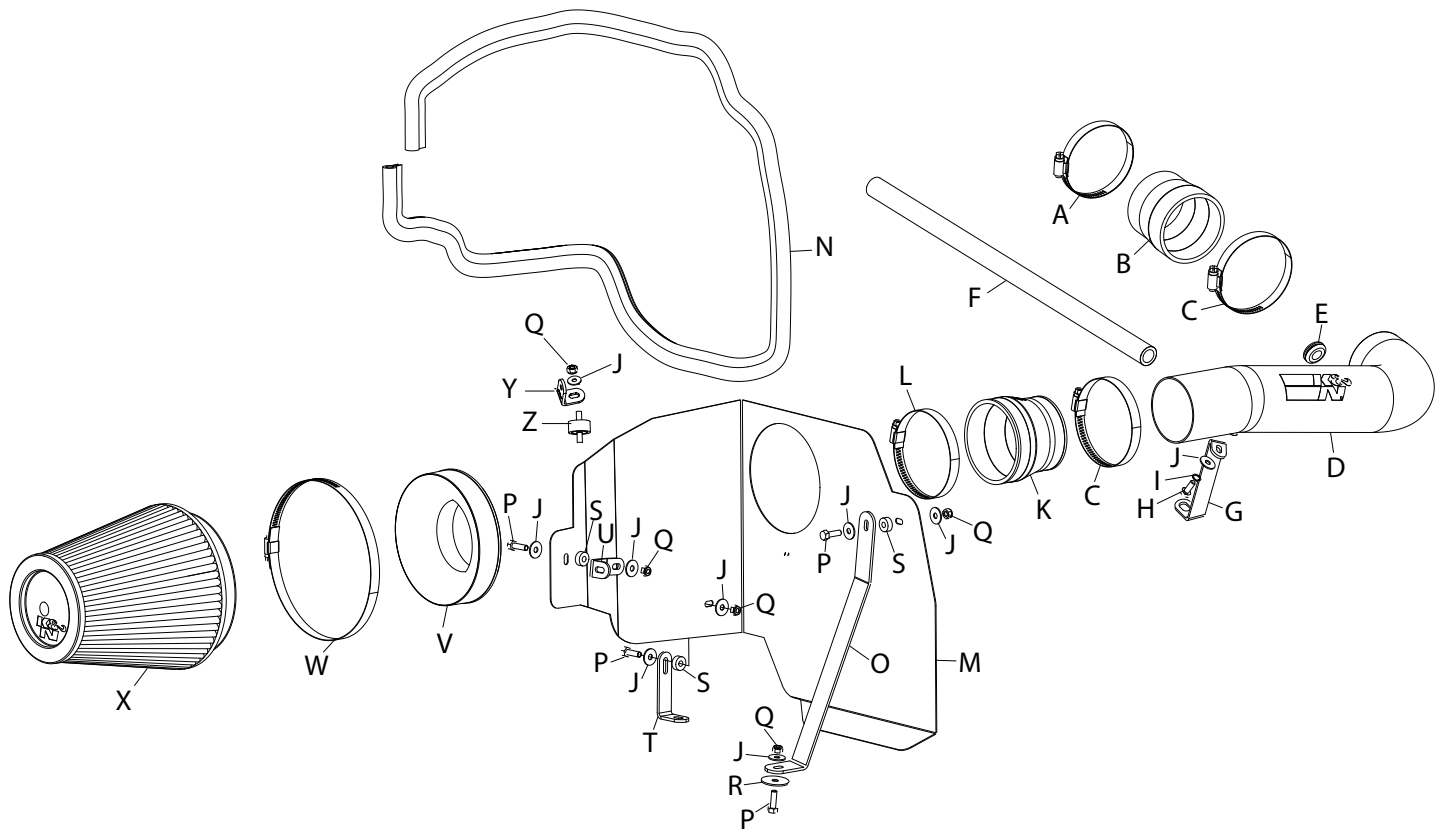
# INSTALLATION INSTRUCTIONS

## 77-1554KP DODGE 2007-08 Nitro V6-3.7L

NOTE: This kit was not designed to fit vehicles with a body lift.

### TOOLS NEEDED:

10mm Socket  
13mm Socket  
Extension  
Flat Blade Screwdriver  
Ratchet  
T30 Torx



### PARTS LIST:

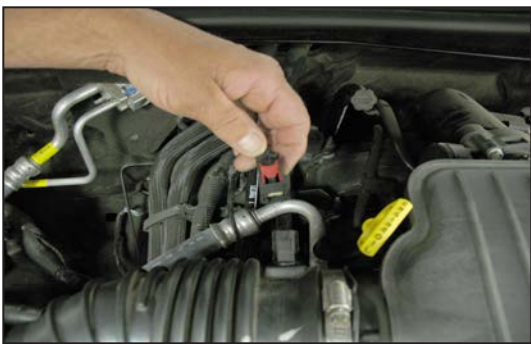
Description	Qty.	Part #	Description	Qty.	Part #	Description	Qty.	Part #
A Hose Clamp #44	1	08577	J Washer; 6MM Flat, SS	9	08269	S Spacer: .625"OD X .250"ID X .250"L	3	06555
B Hose; 2-3/4"ID -3"ID Tprd.; Silicone	1	08096	K Hose; 3.5"ID to 3"ID Tprd., Silicone	1	08724	T Bracket; "L", Fin.	1	070742
C Hose Clamp #48	2	08601	L Hose Clamp #56	1	08620	U Bracket; "L", Stl. FB/PC	1	06464
D Intake Tube	1	27439	M Heat Shield	1	07646	V Adapter; #380	1	21512-1
E Grommet; 1-1/16OD, 1/2ID, 3/8 Thk.	1	080544	N Edge Trim	1	102454	W Hose Clamp #104	1	08697
F Hose; 5/8"ID X 20"L, Silicone	1	08542	O Bracket; "L", Stl. FB/PC	1	020020	X Air Filter	1	RF-1041
G Bracket; "Z", Stl. FB/PC	1	020019	P Bolt; M6 X 1.00" X 20MM Hex, SS	4	07795	Y Bracket	1	070066
H Bolt; 6MM-1.00 X 16MM, SS	1	07812	Q Nut; 6mm Nylock, HexHd., SS	5	07512	Z Rubber Mounted Stud	1	07027
I Washer; 1/4" Lock, ZN	1	08198	R Washer; 1.25D X .28 Hol ZN062 Fit.	1	08151			

**NOTE: FAILURE TO FOLLOW INSTALLATION INSTRUCTIONS AND NOT USING THE PROVIDED HARDWARE MAY DAMAGE THE INTAKE TUBE, THROTTLE BODY AND ENGINE.**

### TO START:

1. Turn off the ignition and disconnect the negative battery cable.

**NOTE: Disconnecting the negative battery cable erases pre-programmed electronic memories. Write down all memory settings before disconnecting the negative battery cable. Some radios will require an anti-theft code to be entered after the battery is reconnected. The anti-theft code is typically supplied with your owner's manual. In the event your vehicles' anti-theft code cannot be recovered, contact an authorized dealership to obtain your vehicles anti-theft code.**



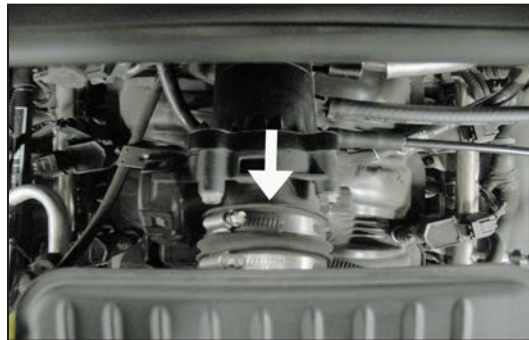
2. Release the red locking tab and then disconnect the air temperature electrical connection.



3. Remove the two "TORX" bolts that secure the intake plenum to the intake manifold with a T30 "TORX" wrench.



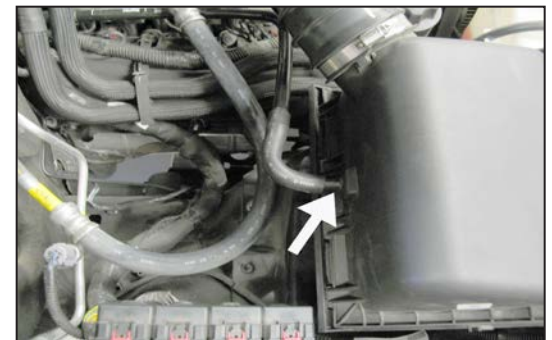
4. Loosen the hose clamp that secures the intake tube to the intake plenum.



5. Loosen the hose clamp that secures the intake plenum to the throttle body.



6. Remove the intake plenum from the vehicle.



7. Disconnect the crankcase vent hose from the airbox.



8. Pull up on the airbox assembly to dislodge it from the mounting grommets and then remove the airbox assembly from the vehicle.

**NOTE: K&N® recommends that customers do not discard factory air intake.**



9. Unhook the crankcase vent hose from fitting on the valve cover and then remove the crankcase vent hose assembly from the vehicle.

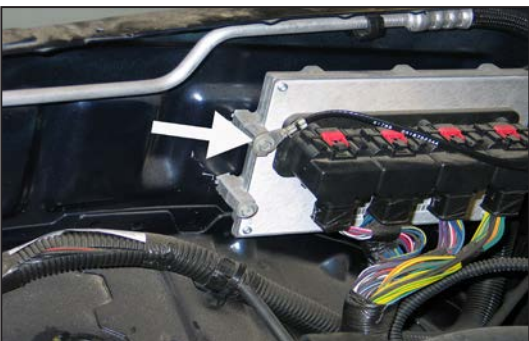




10. Remove the fresh air duct from the radiator core support as shown.



11. On 2007 model year vehicles, remove the front-upper ECU mounting nut shown.  
**NOTE: This nut will be reused in a later step.**



11a. On 2008 and later vehicles, remove the front-upper ECU mounting bolt shown.  
**NOTE: This bolt will be reused in a later step.**



12. Install the provided grommet into the K&N® intake tube as shown.



13. Remove the air temperature sensor from the stock intake tube.  
**NOTE: Take care removing the air temperature sensor as it is very fragile.**



14. Install the air temperature sensor into the grommet installed in the K&N® intake tube during step #12.



15. Remove the A/C mounting bolt shown.  
**NOTE: This bolt will be reused.**



16. Install the "Z" bracket (020019) onto the A/C compressor and secure with the bolt removed in step #15.



17. Install the silicone hose (08096) onto the throttle body and secure with the provided hose clamp.



18. Install the provided edge trim onto the heat shield.  
**NOTE: Some trimming of the edge trim may be necessary.**



19. Install the large "L" bracket (020020) onto the heat shield and secure with the provided spacer and hardware.  
**NOTE: Place the spacer between the heat shield and bracket.**



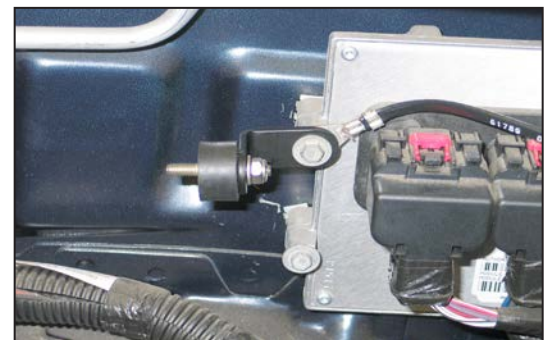
20. Install the small "L" bracket (070742) onto the heat shield as shown using the spacer and hardware provided.  
**NOTE: Place the spacer between the heat shield and bracket.**



21. On 2007 and later vehicles, install the remaining small "L" bracket (06464) onto the heat shield with the provided spacer and hardware.  
**NOTE: Place the spacer between the heat shield and bracket.**



21a. On 2008 and later vehicles, attach the rubber mounted stud to the small "L" bracket (070066) with the provided hardware as shown.



21b. On 2008 and later vehicles, attach the "L" bracket assembly from step #21a. to the ECU using the factory bolt removed in step #11a.  
**NOTE: Be sure to place the ground wire between the bracket and ECU as shown.**



22. Install the heat shield assembly into the vehicle so that the two small "L" brackets align with the threaded stud on the inner fender and the ECU mounting stud.



23. On 2007 model year vehicles, secure the upper heat shield mounting bracket with the nut removed in step #11.



23a. On 2008 and later vehicles, secure the heat shield to the rubber mounted stud installed during step #21b.





24. Secure the lower heat shield mounting bracket to the stud on the inner fender with the hardware provided.



25. Secure the front heat shield mounting bracket to the inner fender with the hardware provided. **NOTE: The bolt is to be installed from under the inner fender through the factory hole and bracket.**



26. Install the K&N® intake tube into the silicone hose at the throttle body and align with the mounting bracket installed in step #15. Secure the tube with the hardware and hose clamp provided.



27. Install the filter adapter into the K&N® air filter and secure with the provided hose clamp.



28. Install the silicone hose (08724) onto the air filter adapter and secure with the provided hose clamp.



29. Install the filter assembly onto the K&N® intake tube and secure with the provided hose clamp.



30. Install the provided silicone crankcase vent hose onto the fitting on the engine and then connect to the fitting on the K&N® intake tube. **NOTE: Some trimming of the hose may be necessary.**



31. Reconnect the air temperature sensor electrical connection.



32. Reconnect the vehicle's negative battery cable. Double check to make sure everything is tight and properly positioned before starting the vehicle.

33. The C.A.R.B. exemption sticker, (attached), must be visible under the hood so that an emissions inspector can see it when the vehicle is required to be tested for emissions. California requires testing every two years, other states may vary.

34. It will be necessary for all K&N® high flow intake systems to be checked periodically for realignment, clearance and tightening of all connections. Failure to follow the above instructions or proper maintenance may void warranty.

#### ROAD TESTING:

1. Start the engine with the transmission in neutral or park, and the parking brake engaged. Listen for air leaks or odd noises. For air leaks secure hoses and connections. For odd noises, find cause and repair before proceeding. This kit will function identically to the factory system except for being louder and much more responsive.

2. Test drive the vehicle. Listen for odd noises or rattles and fix as necessary.

3. If road test is fine, you can now enjoy the added power and performance from your kit.

4. K&N Engineering, Inc., suggests checking the air filter element periodically for excessive dirt build-up. When the element becomes covered in dirt (or once a year), service it according to the instructions on the Recharger® service kit, part number 99-5050 or 99-5000.