

TYPHOON INTAKE SYSTEMS



INSTALLATION INSTRUCTIONS

69-8751

TOYOTA

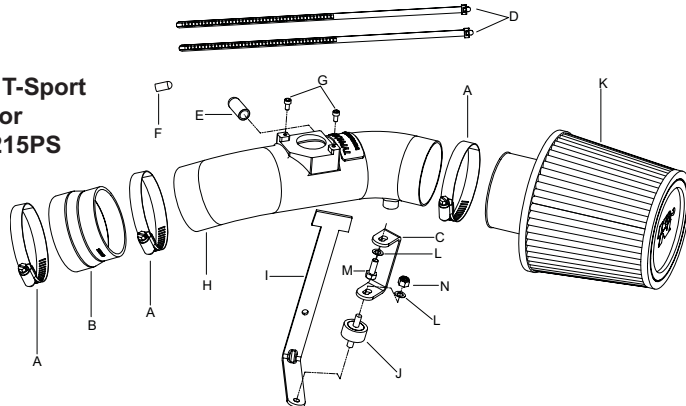
2002-2007 Corolla T-Sport

T-Sport Compressor

1.8L L4 16v 192 / 215PS

TOOLS NEEDED:

Phillips Screwdriver
Flat Blade Screwdriver
Pliers
Needle nose pliers
Ratchet
6" Extension
14" Extension
10mm Socket
3mm Allen Wrench



PARTS LIST:

Description	Qty.	P/N
A Hose Clamp, #44	3	08560
B Silicone Step Hose, Black	1	084036
C Bracket "C"	1	070052
D Plastic Cable Tie	2	21590
E Rubber Cap Plug, Large	1	08214
F Rubber Cap Plug, Small	1	08282
G Cap Screw, 4mm x 8mm L.	2	07733
H Intake Tube	1	27111
I "L" Bracket	1	020009
J Rubber Stud M6	1	07027
K Air Filter	1	RJ-4960
L 6mm Wave Washer	2	08277
M Hex Bolt, 6mm x 16mm L.	1	07812
N 6mm Nylock Nut	1	07512

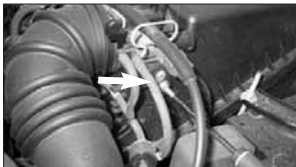
NOTE: FAILURE TO FOLLOW INSTALLATION INSTRUCTIONS AND NOT USING THE PROVIDED HARDWARE MAY DAMAGE THE INTAKE TUBE, THROTTLE BODY AND ENGINE.

TO START:

1. Turn the ignition OFF and disconnect the vehicle's negative battery cable.



2. Disconnect the mass air sensor electrical connection as shown.



3. Remove the two screws that secure the vacuum switching valve to the air box as shown. **Compressor models:** This will be a relay unit instead of a vacuum switching valve.



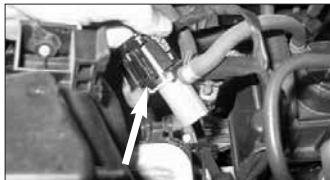
4. Remove the stock bracket from the vacuum switching valve as shown.



5. Loosen the hose clamps at the throttle body and at the air box, then release the vacuum hose from the stock intake tube and remove the stock intake tube as shown.



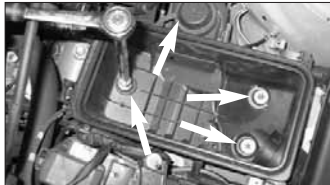
6. Unclip the air box lid, then tilt upwards and remove the vacuum hose as shown.



7. Push back the indicated clip and remove the PWM vacuum switching valve from the air box lid.



8. Remove the air box lid as shown.



9. Loosen and remove the three bolts that secure the air box base to the vehicle as shown. Also disconnect the indicated vacuum hose from the butterfly valve.



10. Unclip the wire harness from the air box base as shown.



11. Remove the air box base as shown. **NOTE: K&N recommends that customers do not discard factory air intake.**



12. Loosen the battery hold down bracket as shown.



13. Loosen the 4 clips and the 2 bolts, then, remove the radiator core cover as shown.



14. Remove the bolt that secures the battery hold down bracket to the vehicle, then, remove the battery hold down bracket as shown.



15. Remove the push clip that secures the air inlet duct to the radiator core support as shown.



16. Loosen and remove the bolt that secures the air inlet duct to the inner fender as shown.



17. Disconnect the positive battery terminal, then, remove the battery and the battery tray.



18. Remove the air inlet duct as shown.



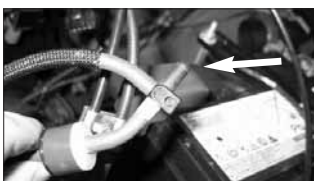
19. Reinstall the battery tray, battery and battery hold down bracket as shown and reconnect the positive battery terminal.



20. If fitted disconnect the two vacuum hoses from the vacuum switching valve as shown.



21a. **2002-2004 models:** Remove the indicated vacuum hose from the intake manifold as shown.



21b. **2005-later & compressor models:** Remove the vacuum hose from the vacuum connector and replace it with the small rubber cap plug as shown.



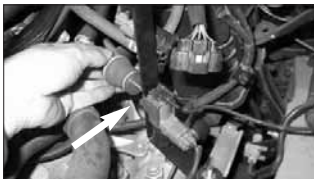
22a. **2002-2004 models:** Install the small rubber cap plug onto the vent on the manifold as shown.



22b. **2005-later & compressor models:** Fit the vacuum hose onto the throttle cable using a tie wrap supplied.



23. Secure the provided "L" bracket to the original air box mount using the provided rubber mounted stud.



24. Secure the vacuum switching valve or relay unit to the "L" bracket using the screw removed in step 4.



25. Install the "C" bracket to the rubber mounted stud using a waved washer and nylock nut supplied, but do not tighten completely.



26. Fit the large rubber cap plug over the vent in the Typhoon intake tube as shown.



27. Remove the screws from the mass air sensor, then, remove the mass air sensor from the air box as shown.



28. Install the mass air sensor into the adapter on the Typhoon intake tube and secure with the provided hardware

NOTE: Before installing clean the inside of out with water and a towel!



29. Install the silicone step hose and hose clamps supplied onto the throttle body as shown. Do not fully tighten yet!



30. Slide the Typhoon tube into the silicone step hose, but don't fully tighten the hose clamp yet!



31. Align the Typhoon tube with the "C" bracket and secure with the M6 bolt and wave washer supplied. Don't fully tighten yet!



32. Slide the PWM vacuum switching valve onto the "L" bracket as shown.



33. Install the Filter onto the tube and secure with the provided hose clamp as shown. Now firmly tighten all hose clamps and hardware connections!



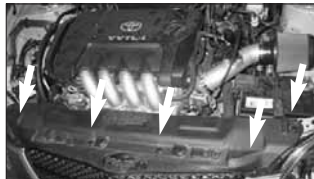
35a. **UK models:** It will be necessary to increase the length of the MAS plug wiring harness. Undo the insulation tape where the MAS harness enters the main harness & carefully pull the harness out to increase the length. Re-apply insulation tape to the harness.



35b. Re-connect the mass air sensor electrical connection as shown.



36. Secure the throttle cable to the brake line using the plastic cable tie supplied. **Do not fully tighten the cable tie, allow a little slack for the throttle cable!**



37. Reinstall the radiator core cover using the original 4 clips and 2 bolts as shown.



38. Re-connect the negative battery cable and double check that everything is tight and properly positioned before starting the vehicle.

39. It will be necessary for all K&N Performance Air Intake Kits to be checked periodically for realignment, clearance and tightening of all connections. Failure to follow the above instructions or proper maintenance may void warranty.

ROAD TESTING:

1. Start the engine with the transmission in neutral or park, and the parking brake engaged. Listen for air leaks or odd noises. For air leaks secure hoses and connections. For odd noises, find cause and repair before proceeding. This kit will function identically to the factory system except for being louder and much more responsive.
2. Test drive the vehicle. Listen for odd noises or rattles and fix as necessary.
3. If road test is fine, you can now enjoy the added power and performance from your kit.
4. K&N suggests checking the air filter element periodically for excessive dirt build-up. When the element becomes covered in dirt (or once a year), service it according to the instructions on the Recharger® service kit, part number 99-5003EU