

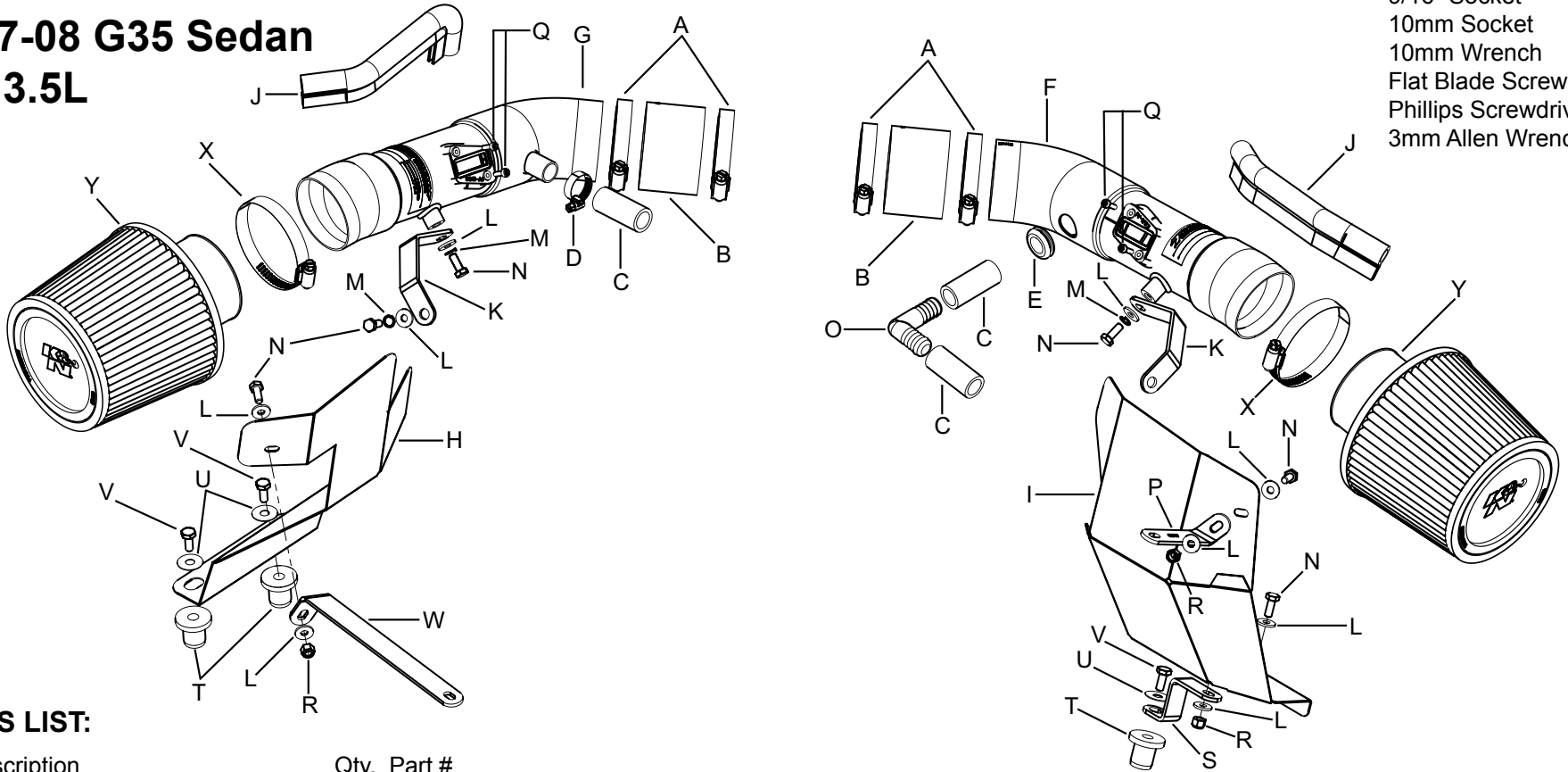
K&N TYPHOON INTAKE SYSTEMS

INSTALLATION INSTRUCTIONS

69-7082TS
INFINITI
2007-08 G35 Sedan
V6- 3.5L

TOOLS NEEDED:

- Ratchet
- Extension
- 9/16" Socket
- 10mm Socket
- 10mm Wrench
- Flat Blade Screwdriver
- Phillips Screwdriver
- 3mm Allen Wrench



PARTS LIST:

Description	Qty.	Part #	Description	Qty.	Part #	Description	Qty.	Part #
A Hose Clamp #40	4	08554	J Edge Trim (9")	2	102465	S Bracket; "Z", Mild STL, FB/PC	1	06488
B Hose; 2-3/4" X 2"L.	2	08440	K Bracket; Med "U", Mild Stl., FB/PC	2	07171	T Insert; 3/8-16 X 3/400 X 15/16L. Rubber	3	08163
C Hose; 5/8"ID X 7-1/2"L. Silicone	1	084008	L Washer; 1/4"ID X 5/8"OD - SAE	9	08275	U Washer; 3/8" Flat, SS	3	08134
D Hose Clamp #8 Mini	1	08410	M Washer; 1/4" Lock, ZN	3	08198	V Bolt; 3/8"-16 X 1-1/4"L SS HexHead	3	07779
E Grommet; 1-1/8"OD, 5/8"ID, 3/8" Thk.	1	080601	N Bolt; 6MM-1.00 X 16MM, SS	6	07812	W Bracket; Angled "L", Stl., FB/PC	1	06719
F Intake Tube Driver Side	1	27412	O Vent; 90 DEG, 5/8" Hose, Plastic	1	08072	X Hose Clamp #44	2	08577
G Intake Tube Passenger Side	1	27411	P Bracket; Angled "L", STL, FB/PC	1	06717	Y Air Filter	2	RU-4960
H Heat Shield Passenger Side	1	07683	Q Bolt; M4 - 0.07 8MM, A/H Cap, SS	4	07733			
I Heat Shield Driver Side	1	07682	R Nut; 6MM Nylock, Hex Head, SS	3	07512			

NOTE: FAILURE TO FOLLOW INSTALLATION INSTRUCTIONS AND NOT USING THE PROVIDED HARDWARE MAY DAMAGE THE INTAKE TUBE, THROTTLE BODY AND ENGINE.

TO START:

1. Turn off the ignition and disconnect the negative battery cable.
NOTE: Disconnecting the negative battery cable erases pre-programmed electronic memories. Write down all memory settings before disconnecting the negative battery cable. Some radios will require an anti-theft code to be entered after the battery is reconnected. The anti-theft code is typically supplied with your owner's manual. In the event your vehicles' anti-theft code cannot be recovered, contact an authorized dealership to obtain your vehicles anti-theft code.



2. Remove the three bolts and two nuts that secure engine cover to the engine.



3. Lift off the engine cover as shown.



4. Disconnect the driver's side airbox mass air sensor electrical connection and unclip the wiring harness from the airbox.



5. Loosen the two hose clamps shown that secure the driver's side intake tube.



6. Release the spring clamp which secures the crankcase vent hose to the intake tube and then remove the intake tube from the vehicle.



7. Disconnect the driver's side crankcase vent hose from the vent chamber as shown and then remove the crankcase vent hose from the valve cover.



8. Remove the driver's side airbox mounting bolt shown.



9. Remove the driver's side airbox assembly from the vehicle.

NOTE: K&N Engineering, Inc., recommends that customers do not discard factory air intake.



10. Remove the driver's side airbox mounting grommet shown from the frame rail.



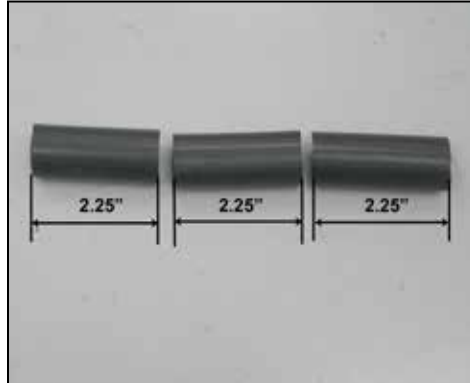
11. Remove the coolant reservoir mounting bolt shown.

NOTE: This bolt will be reused in a later step.



12. Remove the cam cover bolt shown.

NOTE: This bolt will be reused in a later step.



13. Cut the supplied crankcase vent hose into three 2-1/4" long sections.



14. Install two of the cut hoses pieces onto the supplied 90° hose mender as shown.



15. Install the 90° crankcase vent assembly onto the valve cover and then attach the crankcase vent chamber as shown.



16. Install the silicone hose (08440) onto the throttle body and secure with the provided hose clamp as shown.



17. Attach the tube mounting bracket (07171) onto the driver's side intake tube (27412) using the supplied hardware.



18. Install the provided grommet into the intake tube as shown.



19. Remove the two screws which secure the mass air sensor into the stock airbox and then remove the mass air sensor assembly.



20. Install the mass air sensor into the K&N® intake tube and secure with the provided hardware.



21. Install the K&N® intake tube into the silicone hose at the throttle while also installing the crankcase vent chamber into the grommet installed in the K&N® intake tube. Align the tube mounting bracket with the removed cam cover bolt location. Secure the intake tube with the cam cover bolt removed in step #12 and the hose clamp provided.



22. Reconnect the mass air sensor electrical connection.



23. Attach the supplied well nut to the heat shield bracket (06488) using the provided hardware.



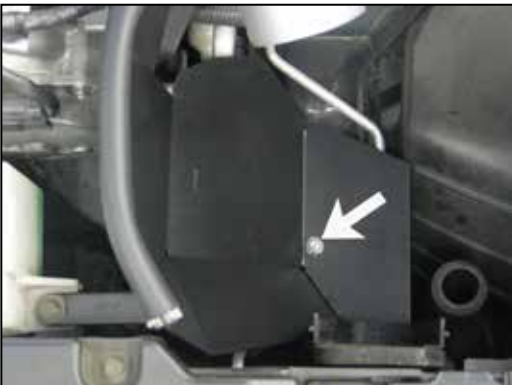
24. Insert the well nut into the airbox mounting grommet hole in the frame rail. Tighten the mounting bolt to secure the mounting bracket and well nut.



25. Attach the heat shield mounting bracket (06717) to the driver's side heat shield (07682) using the provided hardware.



26. Install the provided edge trim onto the heat shield as shown.



27. Install the heat shield assembly into the engine bay as shown. Secure the upper heat shield mounting bracket to the coolant reservoir using the factory bolt removed in step #11. Using the supplied hardware, secure the heat shield to the lower mounting bracket installed during step #24. **NOTE: Be sure to install the bolt up from the bottom through the bracket first.**



28. Install the K&N® air filter onto the intake tube as shown and secure with the provided hose clamp.



29. Disconnect the passenger side mass air sensor electrical connection and then unhook the wiring harness from the airbox.



30. Remove the crankcase vent chamber mounting bolt shown.

NOTE: This bolt will be reused in a later step.



31. Loosen the spring clamp which secures the crankcase vent chamber to the passenger side intake tube and then unhook the crankcase vent chamber from the intake tube as shown.



32. Loosen the two hose clamps which secure the stock intake tube.



33. Remove the stock intake tube as shown.

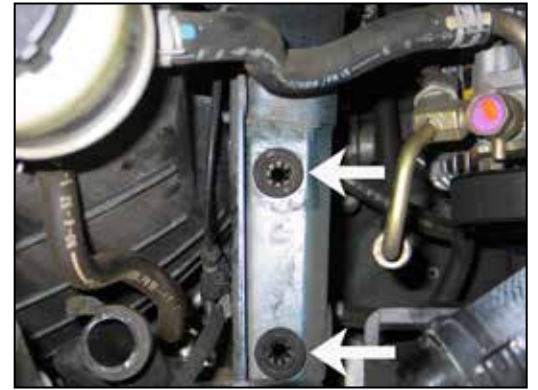


34. Remove the passenger side airbox mounting bolt shown.



35. Remove the passenger side airbox assembly from the vehicle as shown.

NOTE: K&N Engineering, Inc., recommends that customers do not discard factory air intake.



36. Remove the two passenger side airbox mounting grommets shown from the frame rail.



37. Remove the coolant reservoir mounting bolt shown.

NOTE: This bolt will be reused in a later step.



38. Remove the cam cover bolt shown.

NOTE: This bolt will not be reused.



39. Install the supplied silicone hose (08440) onto the throttle body and secure with the provided hose clamp.



40. Attach the provided tube mounting bracket (07171) onto the K&N® intake tube (27411) using the provided hardware.



41. Install the remaining 2-1/4" long crankcase breather hose onto the K&N® intake tube and secure with the provided hose clamp.



42. Remove the two screws securing the mass air sensor to the airbox assembly and then remove the mass air sensor as shown.



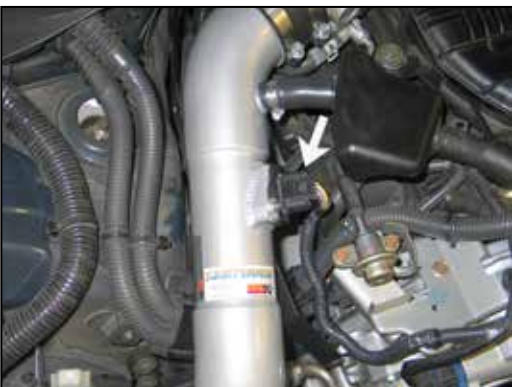
43. Install the mass air sensor into the K&N® intake tube and secure with the provided hardware.



44. Install the K&N® intake tube into the silicone hose at the throttle body and align the mounting bracket with the removed bolt location from step #38. Secure the intake tube with the provided hose clamp and hardware.



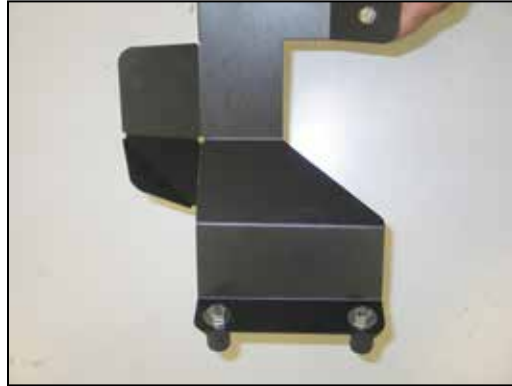
45. Connect the crankcase vent hose to the K&N® intake tube and secure with the provided hose clamp. Secure the crankcase vent chamber with the factory bolt removed during step #30.



46. Reconnect the mass air sensor electrical connection.



47. Attach the heat shield mounting bracket (06719) onto the heat shield (07683) and secure with the provided hardware.



48. Install the two well nuts onto the heat shield and secure with the provided hardware.
NOTE: Do not completely tighten at this time.



49. Install the edge trim onto the heat shield as shown.



50. Set the heat shield assembly into the engine bay as shown. Secure the heat shield mounting bracket to the coolant reservoir with bolt removed in step #37. Tighten the well nut mounting bolts.



51. Install the K&N® air filter and secure with the provided hose clamp.
NOTE: Drycharger® air filter wrap; part # RX-4990DK is available to purchase separately.



52. Install the engine cover and secure with the factory mounting hardware.



53. Reconnect the vehicle's negative battery cable. Double check to make sure everything is tight and properly positioned before starting the vehicle.

54. The C.A.R.B. exemption sticker, (attached), must be visible under the hood so that an emissions inspector can see it when the vehicle is required to be tested for emissions. California requires testing every two years, other states may vary.

55. It will be necessary for all K&N® high flow intake systems to be checked periodically for realignment, clearance and tightening of all connections. Failure to follow the above instructions or proper maintenance may void warranty.

ROAD TESTING:

1. Start the engine with the transmission in neutral or park, and the parking brake engaged. Listen for air leaks or odd noises. For air leaks secure hoses and connections. For odd noises, find cause and repair before proceeding. This kit will function identically to the factory system except for being louder and much more responsive.

2. Test drive the vehicle. Listen for odd noises or rattles and fix as necessary.

3. If road test is fine, you can now enjoy the added power and performance from your kit.

4. K&N Engineering, Inc., suggests checking the air filter element periodically for excessive dirt build-up. When the element becomes covered in dirt (or once a year), service it according to the instructions on the Recharger® service kit, part number 99-5050 or 99-5000.