



TYPHOON INTAKE SYSTEMS

INSTALLATION INSTRUCTIONS

69-7063TTK

NISSAN / INFINITI

2013-14 Altima / Pathfinder

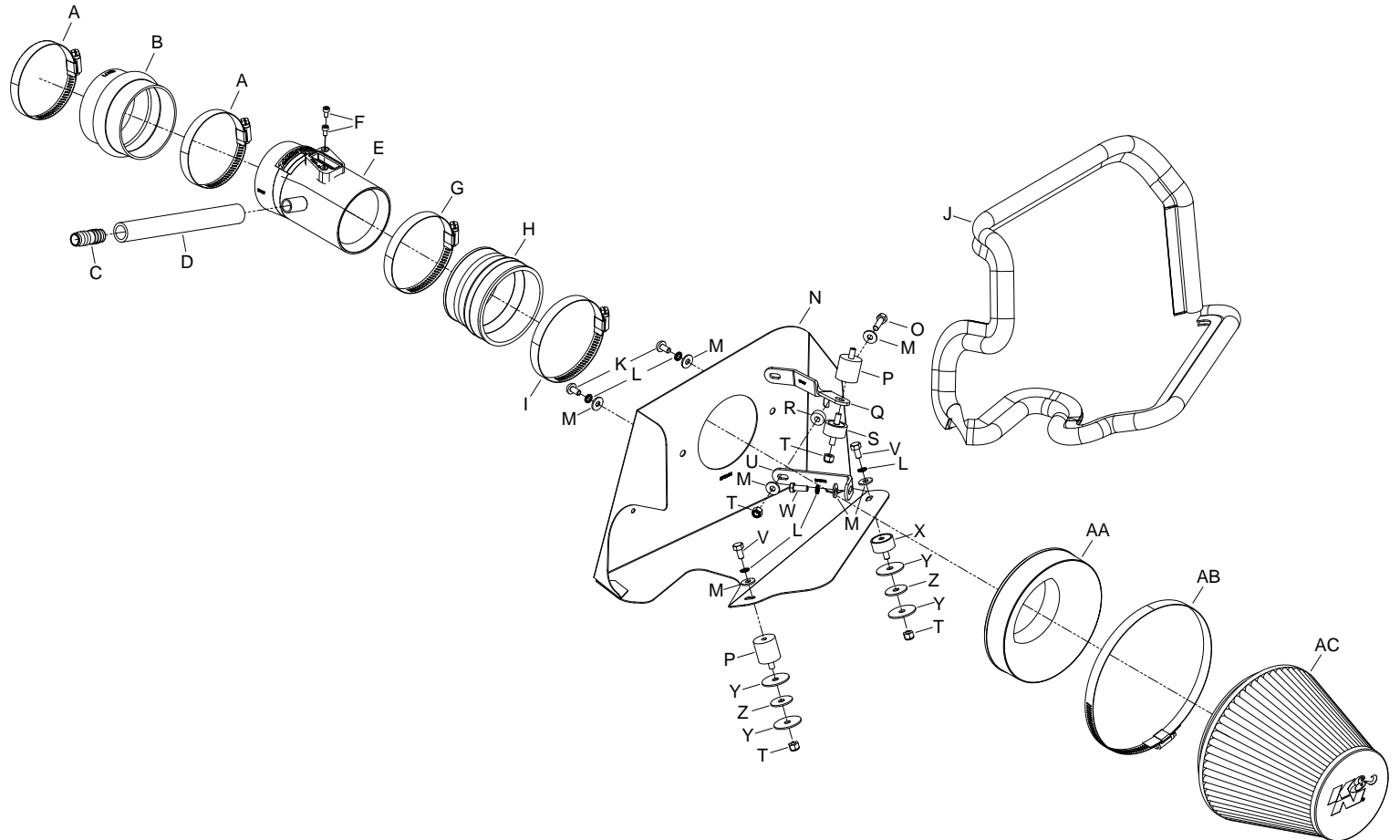
2013 JX35

2014 QX60

V6-3.5L

TOOLS NEEDED:

- Ratchet
- Extension
- 10mm socket
- 10mm wrench
- Flat blade screw driver
- 3mm allen key
- 4mm allen key
- Pliers



PARTS LIST:

Description	Qty.	Part #	Description	Qty.	Part #	Description	Qty.	Part #
A Hose Clamp #48	2	08601	K Bolt; M6 X 1.00" 12MM, SS	2	07794	U Bracket; 69-8605, "L" Short, STL	1	010040
B Hose; 3-1/4" ID X 2-5/8" L Hump	1	08171	L Washer; M6 Split Lock Zinc	5	1-3025	V Bolt; M6 X 1.00 X 12MM, SS	2	07727
C Vent; STRT, 5/8" Hose-5/8"Hose	1	08048	M Washer; 6MM Flat, SS	7	08269	W Bolt; 6MM-1.00 X 16MM,SS	1	07812
D Hose; 5/8"ID X 7-1/2"L	1	084008	N Heat Shield	1	073154	X Stud; rubber MNT, M/F, 1/2"L X 1"	1	070228
E Intake Tube	1	27609TK	O Bolt; M6 X 1.00" X 20MM Hex	1	07795	Y Washer; 1.25D X .28 HOL ZN062	4	08151
F Bolt; M4-0.07 8MM, A/H Cap, SS	2	07733	P Stud; Rubber Mount, M6 X 1, 1"T	2	02033	Z Washer; 1" X .300 X .100 Rubber	2	21685
G Hose Clamp #52	1	08610	Q Bracket; 57-9000, Short, FIN	1	07947	AA Adapter; Universal, 6" Filter 3.5"	1	21512-1
H Hose; 3-1/2" To 3-1/4" ID X 2-1/2"	1	08051	R Spacer; .625"OD X .250"ID	1	06555	AB Hose Clamp #104	1	08697
I Hose Clamp #56	1	08620	S Stud; M6-1.00 M/M, Rubber	1	07027	AC Air Filter	1	RF-1048
J Edge Trim (57")	1	102470	T Nut; 6MM Nylock, Hexhead, SS	4	07512			

NOTE: FAILURE TO FOLLOW INSTALLATION INSTRUCTIONS AND NOT USING THE PROVIDED HARDWARE MAY DAMAGE THE INTAKE TUBE, THROTTLE BODY AND ENGINE.

TO START:

- Turn off the ignition and disconnect the negative battery cable.
NOTE: Disconnecting the negative battery cable erases pre-programmed electronic memories. Write down all memory settings before disconnecting the negative battery cable. Some radios will require an anti-theft code to be entered after the battery is reconnected. The anti-theft code is typically supplied with your owner's manual. In the event your vehicles anti-theft code cannot be recovered, contact an authorized dealership to obtain your vehicles anti-theft code.



- Disconnect the mass air sensor electrical connection and unhook the wiring harness from the air box.



- Loosen the hose clamp which secures the intake hose to the throttle body.



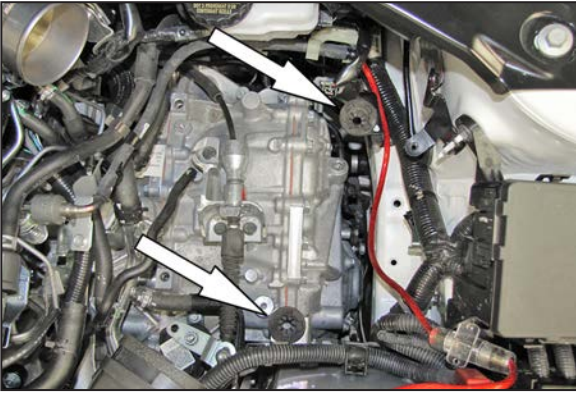
- Release the spring clamp securing the crank case vent hose to the intake plenum and then disconnect the crank case vent hose.



- Release the two upper air box retaining clips and then remove the upper air box assembly.



- Remove the bolt which secures the lower air box to the mounting bracket. Remove the lower air box from the vehicle.
NOTE: It will be necessary to unhook the transmission vent line from the air box as it is being lifted out.
NOTE: K&N Engineering, Inc., recommends that customers do not discard factory air intake.



7. Remove the two air box mounting grommets shown from the mounting brackets.



8. Install the two provided rubber mounting studs onto the air box mounting brackets as shown. **NOTE: The forward rubber mounted stud should be a 1" tall, male/ female; the rear rubber mounted stud should be a 1/2" tall male/ female. Be sure to use two fender washers and one rubber washer on each rubber mounted stud. The fender washers will be on each side of the bracket with the rubber washer sandwiched between.**



9. **THIS STEP IS FOR THE NISSAN PATHFINDER AND INFINITI JX35 VEHICLES ONLY.** Install the remaining 1" tall, male/female rubber mounted stud onto the air box mounting bracket as shown.



10. Install the filter adapter into the heat shield and secure with the provided hardware.

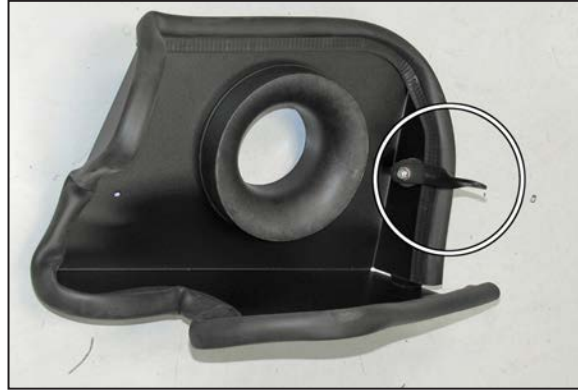


11. Install the provided edge trim on to the heat shield as shown. **NOTE: Some trimming of the edge trim will be necessary.**



12. **THIS STEP IS FOR THE NISSAN ALTIMA, FOR NISSAN PATHFINDER AND INFINITI JX35 VEHICLES, SKIP TO STEP #13.**

Install the provided heat shield mounting bracket (010040) onto the heat shield as shown. Be sure to use the provided spacer between the bracket and heat shield.



13. **THIS STEP IS FOR THE NISSAN PATHFINDER AND INFINITI JX35 VEHICLES ONLY.**

Install the heat shield mounting bracket (07947) onto the heat shield as shown using the male/male rubber mounted stud and hardware.



14. Install the heat shield assembly onto the rubber mounted studs. Secure the heat shield with the provided hardware. Clip the transmission vent into the hole in the heat shield.

NOTE: Do not secure the mounting bracket at this time.



15. Install the provided hump hose (08171) onto the throttle body and secure with provided hose clamp.



16. Install the provided coupling hose (08051) onto the filter adapter and secure with the provided hose clamp.



17. Remove the mass air sensor from factory air box.



18. Install the mass air sensor into the K&N intake tube and secure with the provided hose clamp.



19. Install the K&N intake tube into the hump hose, Pull the heat shield forward and install the intake tube into the hose at the filter adapter. Adjust the tube for best fit and then secure the tube with the provided hose clamps.



20. Secure the heat shield mounting bracket to the air box bracket on the strut tower with the provided hardware.

NOTE: On Nissan Pathfinder and Infiniti JX35 vehicles, the mounting bracket will be secured to the rubber mounted stud installed during step #9.



21. Install the hose mender into the provided crank case vent hose as shown.



22. Install the crank case vent hose onto the fitting on the K&N intake tube and the install the hose mender into the factory crank case vent hose and secure with the factory spring clamp.



23. Install the K&N® air filter onto the filter adapter and secure with the provided hose clamp.

NOTE: Drycharger® air filter wrap; part # RF-1048DK is available to purchase separately.



24. Reconnect the mass air sensor electrical connection.



25. Reconnect the vehicle's negative battery cable. Double check to make sure everything is tight and properly positioned before starting the vehicle.

26. The C.A.R.B. exemption sticker, (attached), must be visible under the hood so that an emissions inspector can see it when the vehicle is required to be tested for emissions. California requires testing every two years, other states may vary.

27. It will be necessary for all K&N® high flow intake systems to be checked periodically for realignment, clearance and tightening of all connections. Failure to follow the above instructions or proper maintenance may void warranty.

ROAD TESTING:

1. Start the engine with the transmission in neutral or park, and the parking brake engaged. Listen for air leaks or odd noises. For air leaks secure hoses and connections. For odd noises, find cause and repair before proceeding. This kit will function identically to the factory system except for being louder and much more responsive.

2. Test drive the vehicle. Listen for odd noises or rattles and fix as necessary.

3. If road test is fine, you can now enjoy the added power and performance from your kit.

4. K&N Engineering, Inc., requires cleaning the intake system's air filter element every 100,000 miles. When used in dusty or off-road environments, our filters will require cleaning more often. We recommend that you visually inspect your filter once every 25,000 miles to determine if the screen is still visible. When the screen is no longer visible some place on the filter element, it is time to clean it. To clean and re-oil, purchase our filter Recharger® service kit, part number 99-5050 or 99-5000 and follow the easy instructions.