



TYPHOON INTAKE SYSTEMS

INSTALLATION INSTRUCTIONS

69-6544TS

MITSUBISHI

2009-14 Lancer

L4-2.0L / 2.4L

NOTE: EXCLUDING LEV2 SULEV
2009-11 TEST GROUPS 9MTXV02.0G6G,
AMTXV02.0G6G, AMTXV02.4G6G AND
BMTXV02.4G6G

TOOLS:

- Ratchet
- Extension
- 13mm Socket
- 10mm Socket
- 8mm Socket
- Flat Blade Screwdriver
- Phillips Screwdriver
- T20 Torx
- Pliers
- 3mm Allen Wrench

PARTS LIST:

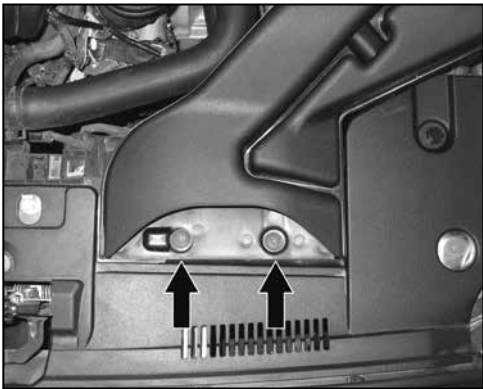
Desc.	Qty.	Part #	Desc.	Qty.	Part #	Desc.	Qty.	Part #
A Hose Clamp #40	3	08554	I Washer; 1/4" Lock, ZN	4	08198	Q Edge Trim	1	102465
B Hose; 2-1/2" ID X 2"L, STRT, Blk.	1	08284	J Washer; 1/4"ID X 5/8"OD - SAE	6	08275	R Bracket; Short Twist, Fin.	1	070702
C Intake Tube	1	27409	K Bolt; 8mm-1.25 X 16mm, Hexhead	1	07844	S Nut; 6mm Nylock, Hexhead, SS	1	07512
D Grommet; 1"OD,1/2"ID, 1/2" Thk.	1	08064	L Washer; 8mm Spring (Wave)	1	08239	T Spacer; .625" OD X .250"ID X .250"L	1	06555
E Vent; 1/2 X 1/2 Plastic Elbow, Blk.	1	08065	M Washer; 5/16"ID X 5/8"OD, Flat	1	08276	U Grommet; 7/16"ID	2	08092
F Hose; 1/2"ID X 9"L, Black Silicone	1	08401	N Bolt; M4 - 0.07 8mm, A/H Cap, SS	2	07733	V Air Filter	1	RU-4950
G Bracket; "L", STL, FB/PC	1	06724	O Heat Shield	1	07626	W Hose; 2-1/2" To 2-3/4" Tprd.	1	084016
H Bolt; M6 X 1.00" X 20mm Hexhead, SS	5	07795	P Edge Trim	1	102488	X Bracket	1	083140

NOTE: FAILURE TO FOLLOW INSTALLATION INSTRUCTIONS AND NOT USING THE PROVIDED HARDWARE MAY DAMAGE THE INTAKE TUBE, THROTTLE BODY AND ENGINE.

TO START:

1. Turn off the ignition and disconnect the negative battery cable.

NOTE: Disconnecting the negative battery cable erases pre-programmed electronic memories. Write down all memory settings before disconnecting the negative battery cable. Some radios will require an anti-theft code to be entered after the battery is reconnected. The anti-theft code is typically supplied with your owner's manual. In the event your vehicles' anti-theft code cannot be recovered, contact an authorized dealership to obtain your vehicles anti-theft code.



2. Remove the two fasteners that secure the fresh air intake scoop shown.



3. Remove the fresh air intake scoop from the vehicle.



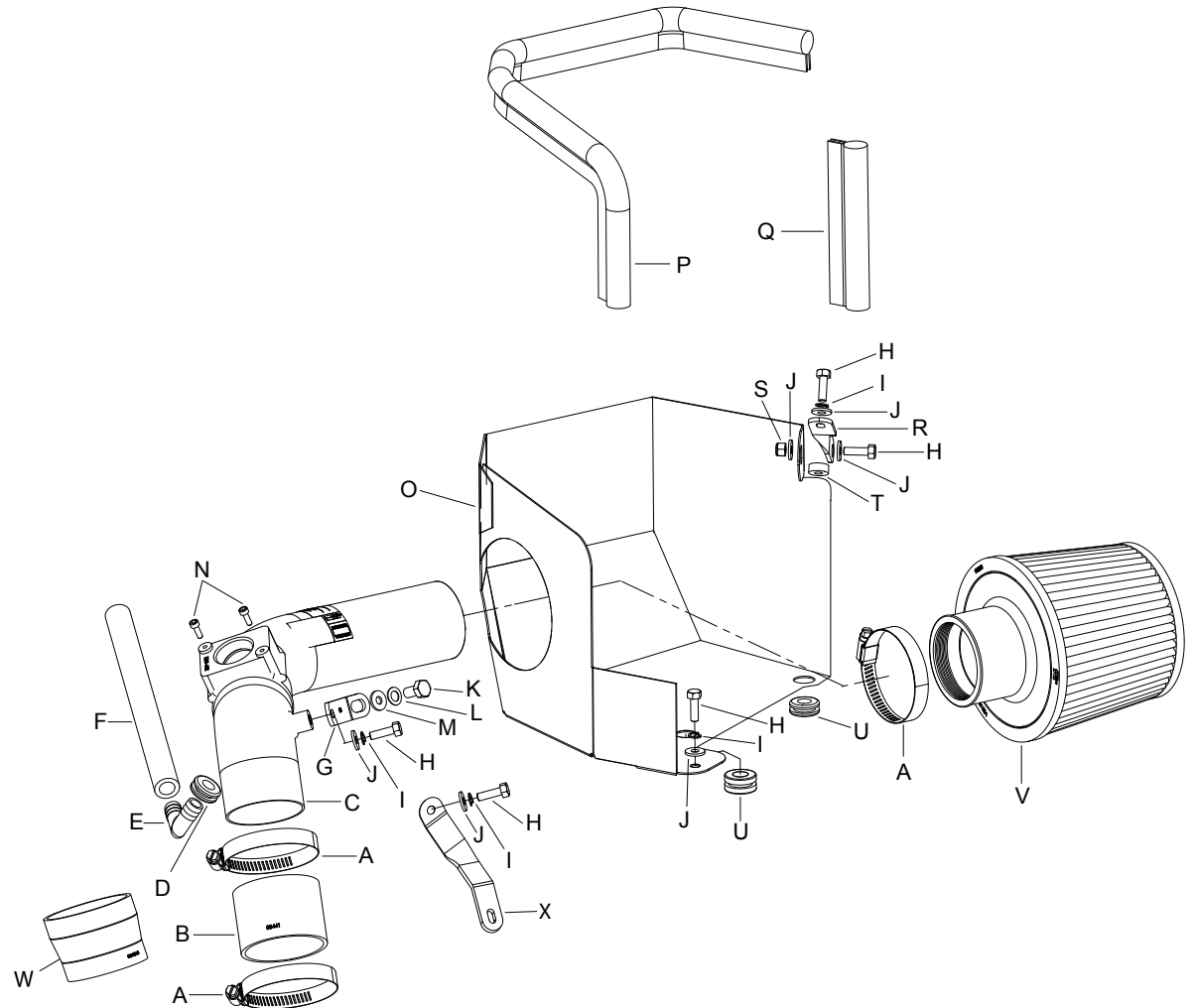
4. Disconnect the mass air sensor electrical connection and unhook the mass air sensor wiring harness from the air box.



5. Release the spring clamp that secures the crank case vent hose to the valve cover port. Disconnect the crank case vent hose from the valve cover.



6. Loosen the two hose clamps that secure the stock intake tube to the throttle body and air filter housing.

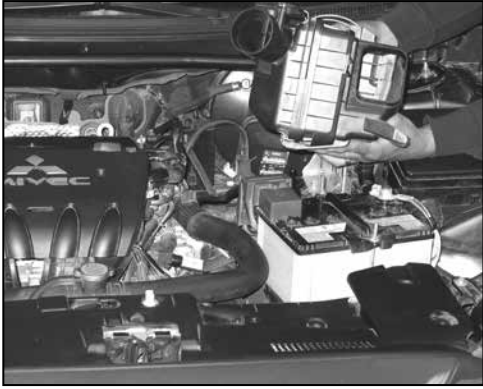




7. Remove the stock intake tube from the vehicle as shown.

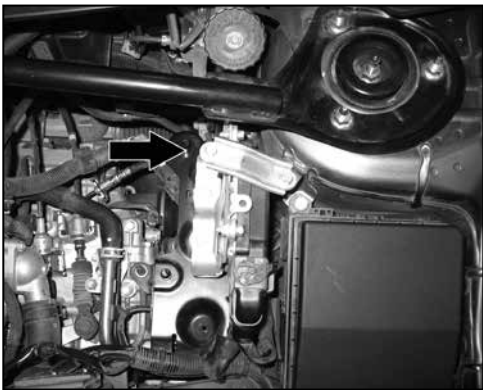


8. Remove the bolt shown that secures the air filter assembly to the mounting bracket.



9. Lift up the air box assembly to unhook it from the mounting grommets and then remove the air box from the vehicle as shown.

NOTE: K&N Engineering, Inc., recommends that customers do not discard factory air intake.

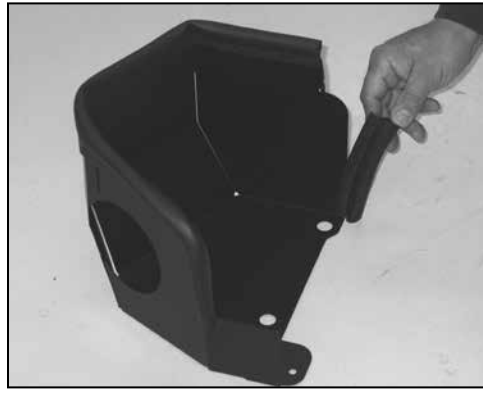


10. Remove the ECU bracket mounting bolt shown.



11. Install the long piece of the edge trim onto the heat shield as shown.

NOTE: Some trimming of the edge trim may be needed.

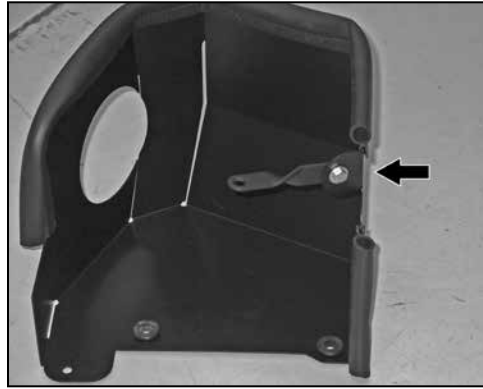


12. Install the short piece of the edge trim onto the heat shield as shown.

NOTE: Some trimming of the edge trim may be needed.



13. Install the two 7/16" ID grommets (08092) that are provided into the mounting holes in the heat shield as shown.

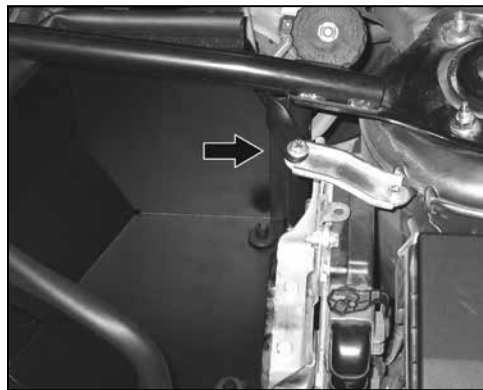


14. Install the heat shield bracket (070702) onto the heat shield as shown.

NOTE: Do not completely tighten the bracket at this time.



15. Install the heat shield assembly into the vehicle so that the grommets fit tightly over the factory air box mounting studs.



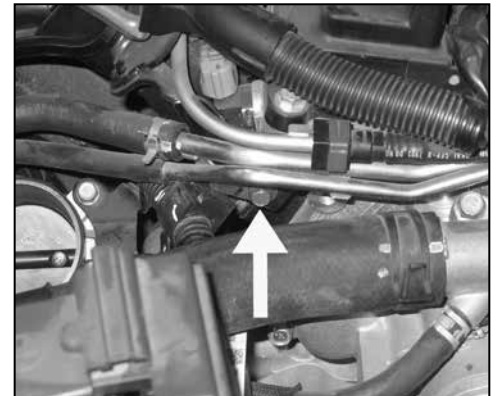
16. Place the supplied spacer under the heat shield mounting bracket and then secure the bracket to the ECU mounting bracket with the provided hardware as shown.



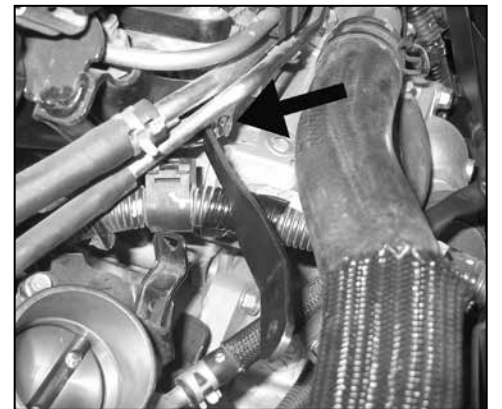
17. Secure the front of the heat shield to the front air box mount with the provided hardware. Tighten all the heat shield mounting bolts.



18. On vehicles equipped with an EGR tube, unhook the engine wiring harness from the clip and move the wiring harness rearward as shown. Install the intake tube mounting bracket (06724) onto the intake manifold and secure with the provided hardware.



18a. On vehicles not equipped with an EGR tube, remove the bolt shown which secures the steel vacuum lines to the engine.



18b. Secure the provided tube mounting bracket (083140) to the engine using the provided hardware.

NOTE: Be sure to resecure the vacuum lines under the tube mounting bracket.



19. Install the provided silicone hose (08284) onto the throttle body and secure with the provided hose clamps.

NOTE: On vehicles equipped with a 2.4L engine with the larger throttle body, use the supplied silicone hose #084016.



20. Remove the two screws that secure the mass air sensor into the factory air box and remove the mass air sensor as shown.



21. Install the mass air sensor into the intake tube and secure with provided hardware.



22. Install the provided 1/2" ID grommet (08064) into the intake tube as shown.



23. Install the 90° barbed fitting into the grommet that was installed into the K&N® intake tube in the previous step.



24. Install the K&N® intake tube into the silicone hose at throttle body and align with the mounting bracket installed in step #18. Secure the intake tube with the provided hose clamp and hardware. **NOTE: It may be necessary to reposition the positive battery cable to obtain proper clearance of the tube.**



25. Install the provided crank case vent hose onto the 90° barbed fitting on the K&N® intake tube. Then attach the open end of the vent hose onto the valve cover vent port as shown.



26. Install the K&N® air filter onto the intake tube and secure with the provided hose clamp.



27. Reconnect the mass air sensor electrical connection.



28. Reinstall the fresh air intake scoop and secure with the factory retaining clips.



29. Reconnect the negative battery cable and double check to make sure everything is tightened and properly positioned before starting the vehicle.

30. The C.A.R.B. exemption sticker, (attached), must be visible under the hood so that an emissions inspector can see it when the vehicle is required to be tested for emissions. California requires testing every two years, other states may vary.

31. It will be necessary for all K&N® high flow intake systems to be checked periodically for realignment, clearance and tightening of all connections. Failure to follow the above instructions or proper maintenance may void warranty.

ROAD TESTING:

1. Start the engine with the transmission in neutral or park, and the parking brake engaged. Listen for air leaks or odd noises. For air leaks secure hoses and connections. For odd noises, find cause and repair before proceeding. This kit will function identically to the factory system except for being louder and much more responsive.

2. Test drive the vehicle. Listen for odd noises or rattles and fix as necessary.

3. If road test is fine, you can now enjoy the added power and performance from your kit.

4. K&N Engineering, Inc., requires cleaning the intake system's air filter element every 100,000 miles. When used in dusty or off-road environments, our filters will require cleaning more often. We recommend that you visually inspect your filter once every 25,000 miles to determine if the screen is still visible. When the screen is no longer visible some place on the filter element, it is time to clean it. To clean and re-oil, purchase our filter Recharger® service kit, part number 99-5050 or 99-5000 and follow the easy instructions.