

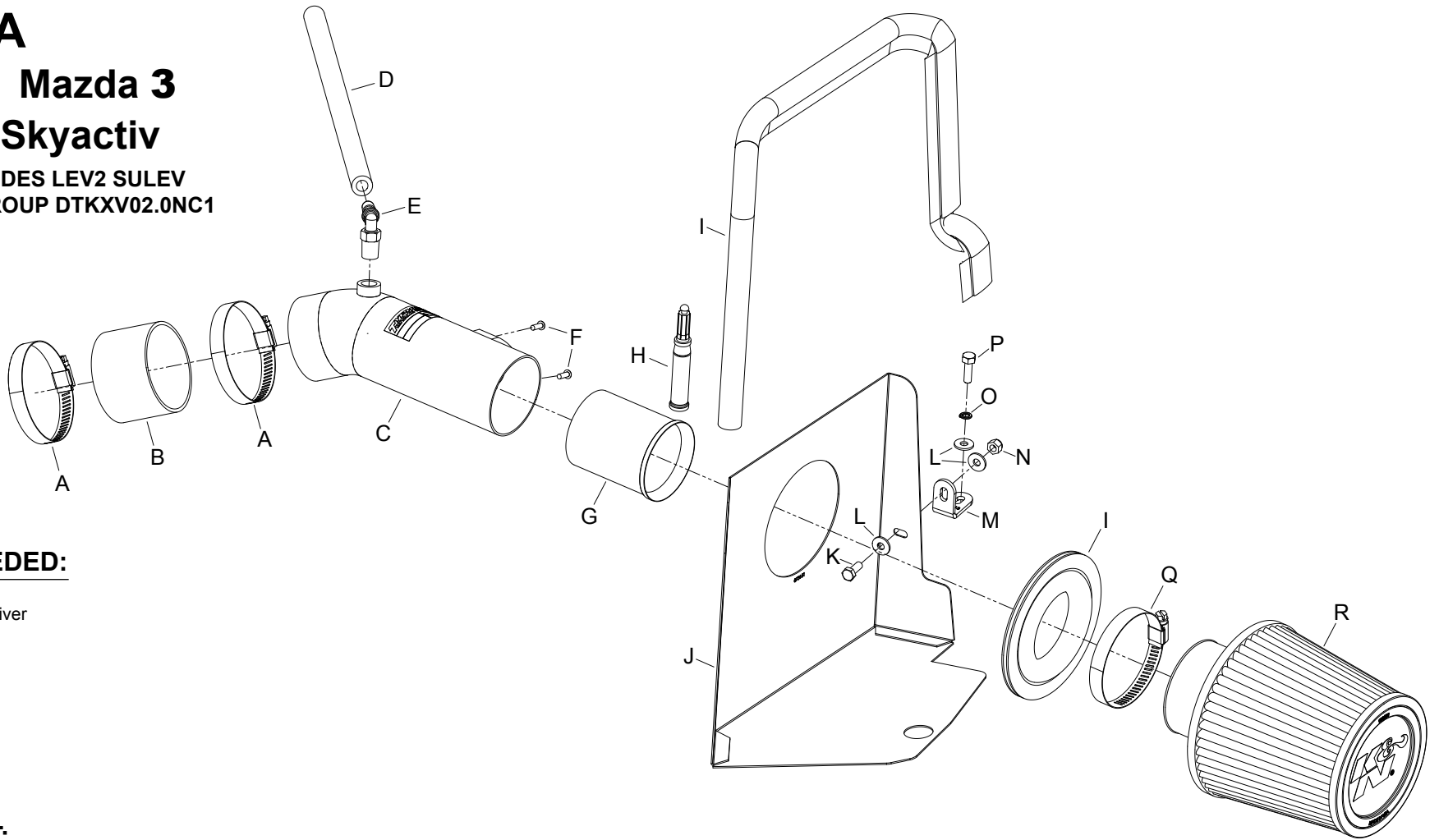


TYPHOON INTAKE SYSTEMS

INSTALLATION INSTRUCTIONS

69-6033TTK MAZDA 2013-14 Mazda 3 L4-2.0L Skyactiv

NOTE: EXCLUDES LEV2 SULEV
2013 TEST GROUP DTKXV02.0NC1



TOOLS NEEDED:

- 10mm socket
- flat blade screw driver
- 10mm wrench
- 2.5mm allen key
- extension
- ratchet

PARTS LIST:

Description	Qty.	Part #	Description	Qty.	Part #	Description	Qty.	Part #
A Hose Clamp #44 Stainless	2	08560	G Venturi; 2.59" OD X 2.37"ID	1	9-0381	M Bracket; "L" 69-6032, STL	1	064313
B Hose; 2 -3/4" ID X 2"L Reinforced	1	08440	H Super Glue; 3G Drip Proof	1	409	N Nut; 6MM Nylock, Hexhead, SS	1	07512
C Intake Tube	1	27616	I Edge Trim (41 ")	1	102486	O Washer; M6 Split Lock Zinc	1	1-3025
D Hose; 3/8"ID X 17" L	1	08404	J Heat Shield	1	073151	P Bolt; M6 X 1.00 X 20MM Hex, SS	1	07795
E Vent; 1/4 NPT, 90 DEG, 3/8"	1	08523	K Bolt; 6MM- 1.00 X 16MM, SS	1	07812	Q Hose Clamp #44	1	08577
F Screw; M4 - .7 X 12, Buttonhead	2	07726	L Washer; 6MM Flat, SS	3	08269	R Air filter	1	RU-4960XD

NOTE: FAILURE TO FOLLOW INSTALLATION INSTRUCTIONS AND NOT USING THE PROVIDED HARDWARE MAY DAMAGE THE INTAKE TUBE, THROTTLE BODY AND ENGINE.

TO START:

1. Turn off the ignition and disconnect the negative battery cable.
NOTE: Disconnecting the negative battery cable erases pre-programmed electronic memories. Write down all memory settings before disconnecting the negative battery cable. Some radios will require an anti-theft code to be entered after the battery is reconnected. The anti-theft code is typically supplied with your owner's manual. In the event your vehicles anti-theft code cannot be recovered, contact an authorized dealership to obtain your vehicles anti-theft code.



2. Lift up and remove the decorative engine cover.



3. Disconnect the mass air sensor electrical connection.



4. Disconnect the crank case vent hose from the valve cover port.



5. Loosen the hose clamp securing the factory intake hose to the throttle body.



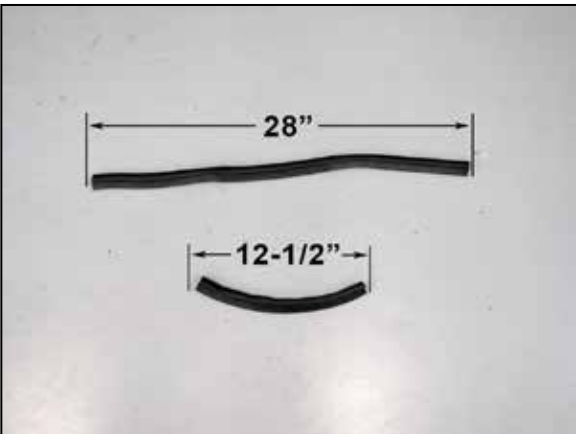
6. Remove the two bolts securing the fresh air intake scoop to the core support.



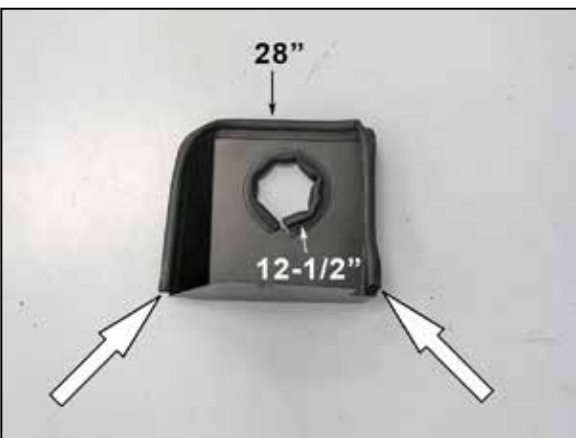
7. Lift up and remove the complete air box assembly from the vehicle.

NOTE: The assembly is held to the inner fender with rubber grommets that will disengage as the air box is pulled up.

NOTE: K&N Engineering, Inc., recommends that customers do not discard factory air intake.



8. Cut the provided edge trim into two sections. One section is to be 12-1/2" long and the other section is to be 28" long.



9. Install the 12-1/2" section into the hole of the heat shield and install the 28" section around the outside edge of the heat shield as shown.



10. Remove the mounting grommet shown from the factory air box.

NOTE: This grommet will be used in the next step



11. Install the mounting grommet from step 10 into the K&N® heat shield as shown.



12. Remove the bolt shown from the battery tray.



13. Install the heat shield mounting bracket (064313) onto the battery tray using the provided hardware.



14. Install the heat shield onto the mounting stud and secure to the mounting bracket with the hardware provided.



15. Remove the two screws securing the mass air sensor into the factory air box and then remove the mass air sensor.



16. Install the mass air sensor into the K&N® intake tube and secure with the provided hardware.



17. Apply several drops of the provided glue to the lip of the inner sleeve and then install the sleeve into the K&N® intake tube as shown.



18. Install the provided 90° vent fitting into the K&N® intake tube as shown.

NOTE: Plastic NPT fittings are easy to cross thread. Install the vent fitting "hand" tight, then turn it two complete turns with a wrench.



19. Install the provided coupling hose (08440) onto the throttle body and secure with the provided hose clamp.



20. Install the K&N® intake tube assembly through the hole in the heat shield and then into the hose at the throttle body. Adjust the tube for best fit and secure with the provided hose clamp.



21. Install the filter hose clamp onto the intake tube and then install the filter onto the tube. Reinstall the clamp onto the filter and secure the filter onto the intake tube.

NOTE: Drycharger® air filter wrap; part # RX-4990DK is available to purchase separately.



22. Install the provided crank case vent hose onto the valve cover port and then onto the 90° fitting in the intake tube.

NOTE: Some trimming of the hose may be necessary.



23. Reinstall the engine cover.



24. Reconnect the mass air sensor electrical connection.



25. Reconnect the vehicle's negative battery cable. Double check to make sure everything is tight and properly positioned before starting the vehicle.

26. The C.A.R.B. exemption sticker, (attached), must be visible under the hood so that an emissions inspector can see it when the vehicle is required to be tested for emissions. California requires testing every two years, other states may vary.

27. It will be necessary for all K&N® high flow intake systems to be checked periodically for realignment, clearance and tightening of all connections. Failure to follow the above instructions or proper maintenance may void warranty.

ROAD TESTING:

1. Start the engine with the transmission in neutral or park, and the parking brake engaged. Listen for air leaks or odd noises. For air leaks secure hoses and connections. For odd noises, find cause and repair before proceeding. This kit will function identically to the factory system except for being louder and much more responsive.

2. Test drive the vehicle. Listen for odd noises or rattles and fix as necessary.

3. If road test is fine, you can now enjoy the added power and performance from your kit.

4. K&N Engineering, Inc., requires cleaning the intake system's air filter element every 100,000 miles. When used in dusty or off-road environments, our filters will require cleaning more often. We recommend that you visually inspect your filter once every 25,000 miles to determine if the screen is still visible. When the screen is no longer visible some place on the filter element, it is time to clean it. To clean and re-oil, purchase our filter Recharger® service kit, part number 99-5050 or 99-5000 and follow the easy instructions.