



# TYPHOON INTAKE SYSTEMS

## INSTALLATION INSTRUCTIONS

**69-6012TS**

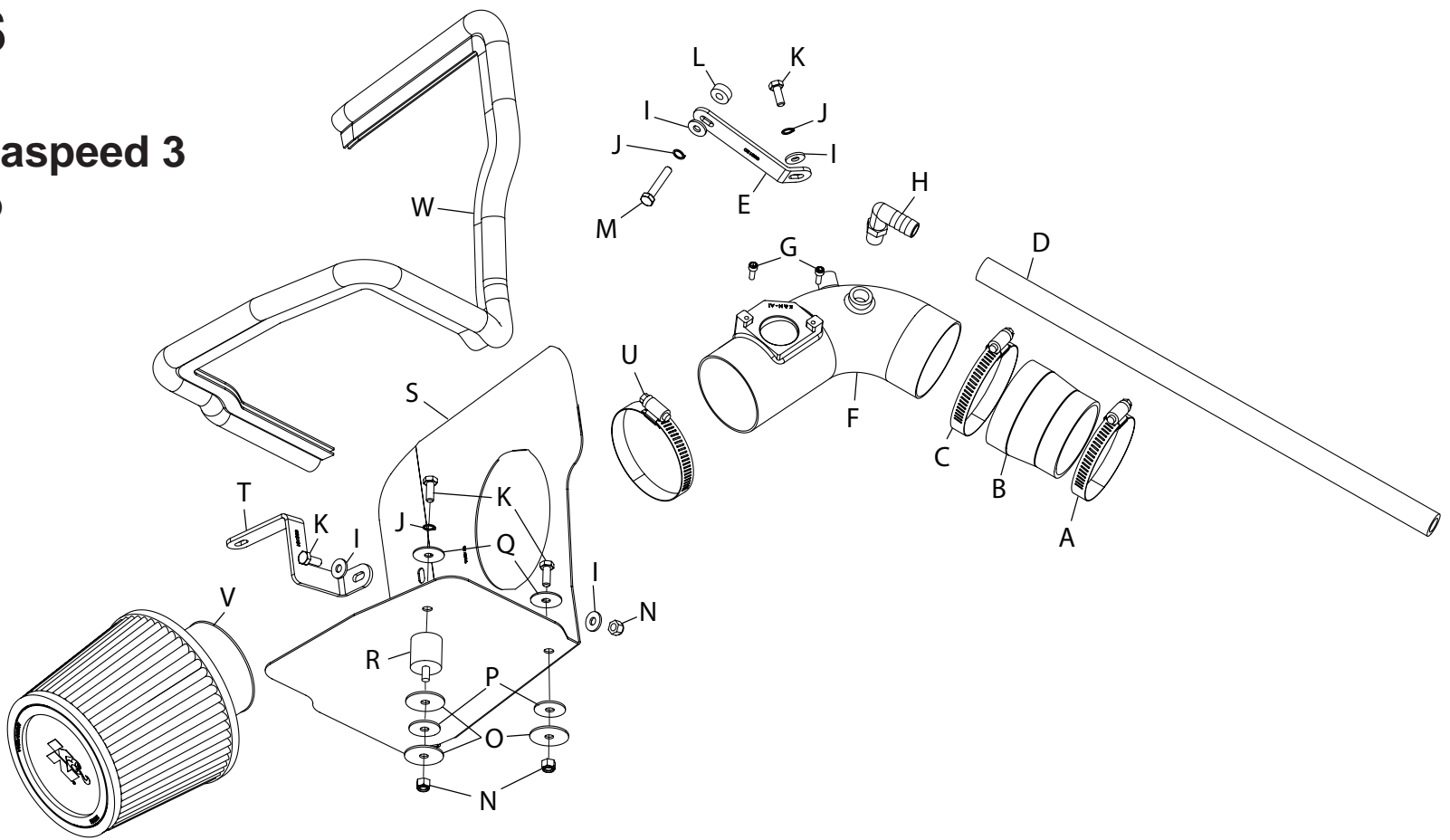
**MAZDA**

**2010-13 Mazdaspeed 3**

**L4-2.3L Turbo**

**TOOLS NEEDED:**

- Ratchet
- Extension
- 10mm socket
- 5/16" socket
- Flat blade screw driver
- Phillips screw driver
- 10mm wrench
- 3mm allen key.



**PARTS LIST:**

Description	Qty.	Part #	Description	Qty.	Part #	Description	Qty.	Part #
A Hose Clamp #36	1	08530	I Washer; 1/4"ID X 5/8"OD - SAE	4	08275	Q Washer; 1"D X 1/4 Hole Fender	2	08160
B Hose; 2-3/4" TO 2-1/2" ID X 2-1/2"L	1	084016	J Washer; 1/4" Lock, ZN	3	08198	R Stud; Mount, M6 X 1, 1" T, M/F	1	02033
C Hose Clamp #40	1	08554	K Bolt; 6MM-1.00 X 16MM, SS	4	07812	S Heat Shield	1	074056
D Hose; 1/2"ID X 17"L, Silicone	1	08177	L Spacer: .625"ODX.250"IDX.250"L	1	06555	T Bracket; "Z", STL, TK/PC	1	083131
E Bracket; "L", STL, TK/PC	1	083130	M Bolt, HEX M6-1 X 35MM	1	1-2002	U Hose Clamp #44	1	08577
F Intake Tube	1	27465	N Nut; 6MM Nylock, Hexhead, SS	3	07512	V Air Filter	1	RU-4960
G Bolt; M4-0.07 8MM, A/H CAP	2	07733	O Washer; 1.25D X .28 HOL ZN062	3	08151	W Edge Trim (55")	1	102480
H Vent; 90deg, 1/2"Hose, 1/4"NPT	1	08110	P Washer; 1" X .300 X .100 Rubber	2	21685			

**NOTE: FAILURE TO FOLLOW INSTALLATION INSTRUCTIONS AND NOT USING THE PROVIDED HARDWARE MAY DAMAGE THE INTAKE TUBE, THROTTLE BODY AND ENGINE.**

**TO START:**

1. Turn off the ignition and disconnect the negative battery cable.

**NOTE: Disconnecting the negative battery cable erases pre-programmed electronic memories. Write down all memory settings before disconnecting the negative battery cable. Some radios will require an anti-theft code to be entered after the battery is reconnected. The anti-theft code is typically supplied with your owner's manual. In the event your vehicles' anti-theft code cannot be recovered, contact an authorized dealership to obtain your vehicles anti-theft code.**



2. Disconnect the mass air sensor electrical connection and unhook the wiring harness from the air box.



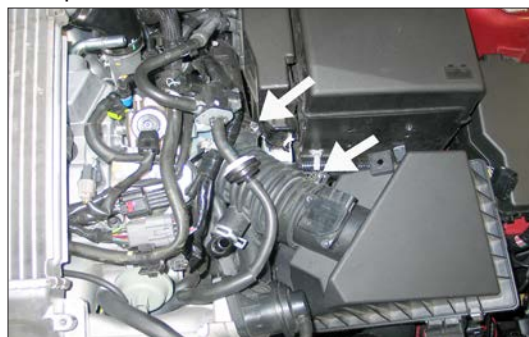
3. Remove the two bolts that secure the engine cover and then remove the engine cover from the vehicle.



4. Release the blue locking tabs on the crank case vent hose where it attaches to the stock intake tube and then unhook the crank case vent hose from intake tube.



5. Rotate the crank case vent backwards to gain access to the green retaining clip. Using a small screw driver, release the locking tabs and then unhook the crank case vent from the valve cover port. Remove the green retaining clip from the valve cover port.



6. Loosen the two hose clamps which secure the intake tube to the air filter and turbo inlet tube.



7. Release the two air box lid locking clips and then remove the air box lid from the vehicle.



8. Remove the intake tube from the vehicle.



9. Remove the two bolts shown and then remove the front air box mounting bracket from the vehicle. **NOTE: The bolt which secures the bracket to the core support will be reused in a later step.**



10. Unhook the fresh air duct from the air box and then remove it from the vehicle.



11. Remove the lower air box from the vehicle.

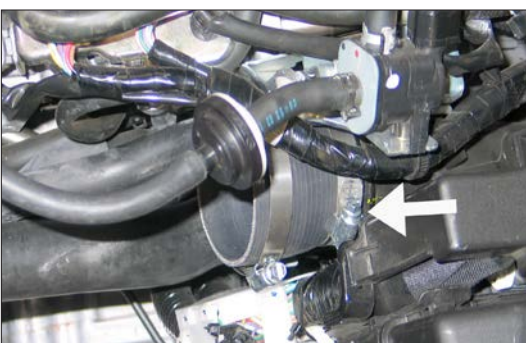


12. Remove the two air box mounting grommets shown.

**NOTE: K&N Engineering, Inc., recommends that customers do not discard factory air intake.**



13. Cut and remove the small piece of tape shown securing the mass air sensor harness.



14. Install the provided silicone hose (084016) onto the turbo inlet tube and secure it with the provided hose clamp.

**NOTE: Be sure to position the hose clamp so that there is clearance for the engine wiring harness.**



15. Install the provided rubber mounted stud onto the air box mounting bracket as shown using the provided hardware.

**NOTE: Be sure to place fender washers on either side of the air box mounting bracket.**



16. Install the provided edge trim onto the heat shield as shown.

**NOTE: Some trimming of the edge trim will be necessary.**



17. Install the heat shield mounting bracket (083131) onto the heat shield as shown using the provided hardware.



18. Install the heat shield into position on the air box mounting bracket then secure the heat shield with the provided hardware.

**NOTE: The mounting bracket will attach the core support with the bolt removed in step #3. Be sure the use the provided fender washer to attach the heat shield to the air box mounting bracket.**



19. Remove the screws securing the mass air sensor and then remove the mass air sensor from the upper air box.



20. Install the mass air sensor into the K&N® intake tube and secure with the provided hardware.



21. Install provided 90° npt fitting into the K&N® intake tube as shown.

**NOTE: Plastic NPT fittings are easy to cross thread. Install the vent fitting "hand" tight, then turn it two complete turns with a wrench.**



22. Install the tube mounting bracket (083130) onto the K&N® intake tube as shown.



23. Remove the pop off valve upper mounting bolt shown.



24. Install the K&N® intake tube assembly into the silicone hose at the turbo inlet pipe and align the bracket with the pop off valve mounting location. Secure the intake tube with the provided hose clamp and hardware.

**NOTE: Be sure to place the provided spacer between the bracket and pop off valve.**



25. Install the provided crank case vent hose onto the 90° fitting in the K&N® intake tube and then attach the open end to the valve cover port.



26. Reinstall the engine cover and secure with the factory bolts.



27. Install the K&N® air filter onto the intake tube and secure with the provided hose clamp.

**NOTE: Drycharger® air filter wrap; part # RX-4990DK is available to purchase separately.**



28. Reconnect the mass air sensor electrical connection.



29. Reconnect the vehicle's negative battery cable. Double check to make sure everything is tight and properly positioned before starting the vehicle.

30. It will be necessary for all K&N® high flow intake systems to be checked periodically for realignment, clearance and tightening of all connections. Failure to follow the above instructions or proper maintenance may void warranty.

#### ROAD TESTING:

1. Start the engine with the transmission in neutral or park, and the parking brake engaged. Listen for air leaks or odd noises. For air leaks secure hoses and connections. For odd noises, find cause and repair before proceeding. This kit will function identically to the factory system except for being louder and much more responsive.

2. Test drive the vehicle. Listen for odd noises or rattles and fix as necessary.

3. If road test is fine, you can now enjoy the added power and performance from your kit.

4. K&N Engineering, Inc., requires cleaning the intake system's air filter element every 100,000 miles. When used in dusty or off-road environments, our filters will require cleaning more often. We recommend that you visually inspect your filter once every 25,000 miles to determine if the screen is still visible. When the screen is no longer visible some place on the filter element, it is time to clean it. To clean and re-oil, purchase our filter Recharger® service kit, part number 99-5050 or 99-5000 and follow the easy instructions.