



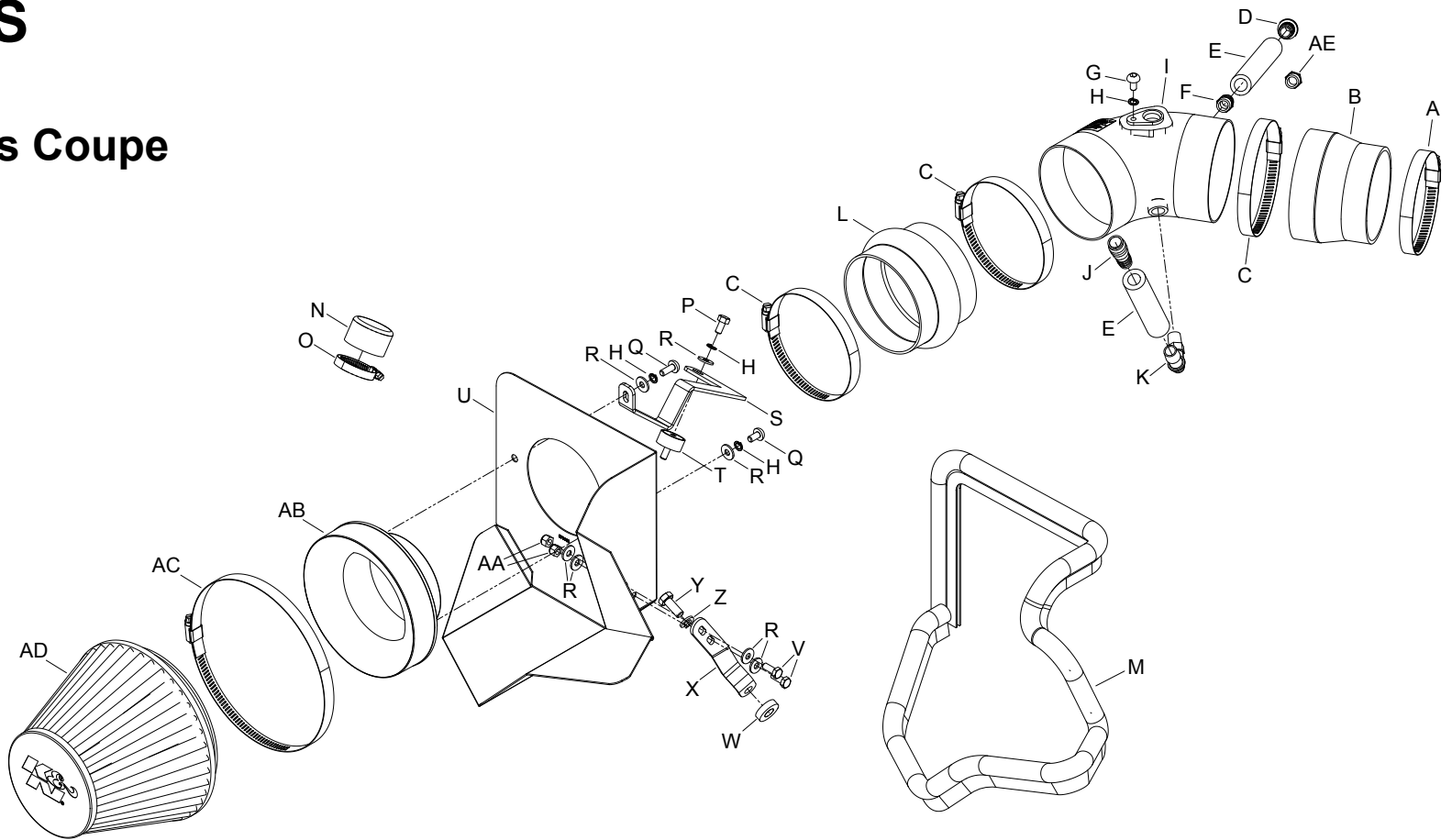
TYPHOON INTAKE SYSTEMS

INSTALLATION INSTRUCTIONS

69-5310TS
HYUNDAI
2013 Genesis Coupe
V6-3.8L

TOOLS NEEDED:

- Ratchet
- Extension
- 13mm Socket
- 12mm Socket
- 10mm Socket
- Flat Blade Screw Driver
- Phillips Screw Driver
- Pliers.



PARTS LIST:

Description	Qty.	Part #	Description	Qty.	Part #	Description	Qty.	Part #
A Hose Clamp #56	1	08620	K Vent; 90DEG, 1/2"Hose, 1/4"NPT	1	08110FK	U Heat Shield	1	073138
B Hose; 4" ID to 3.5"ID X 3"L TPRD	1	08497	L Hose; 4"ID X 3"L Hump	1	08418	V Bolt; 6MM-1.00 X 16MM, SS	2	07812
C Hose Clamp #64 Stainless	3	08645	M Edge Trim (55")	1	102480	W Spacer, 0.937"OD X .437"ID	1	21715
D Vent; STRT 1/2" Hose, 1/4"NPT	1	080022	N Caplug; 1.5"OD X 1.0"L	1	081100	X Bracket; 69-5310, STL, TB/PC	1	064305
E Hose; 1/2"ID X 15-3/4"L	1	08414	O Hose Clamp #20 Mini	1	08431	Y Bolt; 8MM-1.25 X 20MM Hex	1	07787
F Hose Mender; 1/2" Barbed, Nylon	1	08686	P Bolt;M6 X 1.00 X 12MM	1	07727	Z Washer; M8 Split Lock Zinc	1	1-3036
G Bolt; M6 X 1.00 X 16MM	1	07730	Q Bolt; M6 X 1.00" 12MM	2	07794	AA Nut; 6MM Nylock, Hexhead, SS	2	07512
H Washer; M6 Split Lock Zinc	4	1-3025	R Washer, 6MM Flat, SS	7	08269	AB Adaptor; 57-3058 #454	1	27300
I Intake Tube	1	27334TS	S Bracket; 69-5310, STL, TB/PC	1	064304	AC Hose Clamp #104	1	08697
J Hose Mender; 1/2" To 5/8"	1	08726	T Stud; Rubber MNT, M/F, 1/2"L	1	070228	AD Air Filter	1	RC-5138
						AE Plug 1/4" NPT	1	08032

NOTE: FAILURE TO FOLLOW INSTALLATION INSTRUCTIONS AND NOT USING THE PROVIDED HARDWARE MAY DAMAGE THE INTAKE TUBE, THROTTLE BODY AND ENGINE.

TO START:

1. Turn off the ignition and disconnect the negative battery cable.
NOTE: Disconnecting the negative battery cable erases pre-programmed electronic memories. Write down all memory settings before disconnecting the negative battery cable. Some radios will require an anti-theft code to be entered after the battery is reconnected. The anti-theft code is typically supplied with your owner's manual. In the event your vehicles' anti-theft code cannot be recovered, contact an authorized dealership to obtain your vehicles anti-theft code.



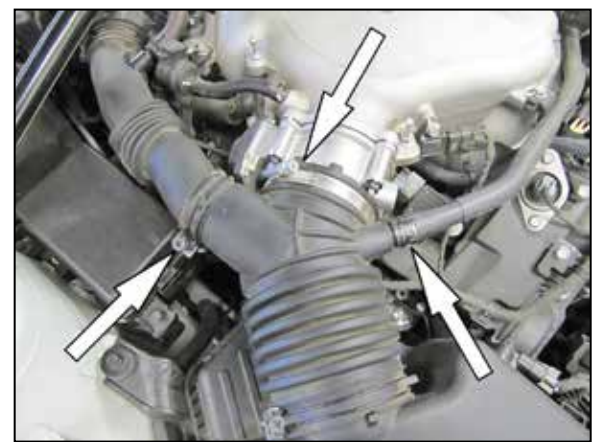
2. Lift up and remove the engine cover from the engine.



3. Remove the four plastic screws that secure the fresh air inlet scoop and then remove the scoop from the vehicle.



4. Disconnect the electrical connection from the inlet air sensor and unhook the wiring harness from the air box.



5. Disconnect the EVAP hose from the factory intake tube, and then loosen the hose clamps securing the intake hose to the throttle body and the engine sound tube to the inlet hose.



6. Remove the two bolts that secure air box to the inner fender.



7. Lift up and remove the air box from the vehicle.
NOTE: K&N Engineering, Inc., recommends that customers do not discard factory air intake.



8. Remove the air box mounting bracket from the back of the headlight.



9. Disconnect the vent line from the engine sound tube.
NOTE: Some vehicles may not be equipped with a vent line attached to the sound tube.



10. Remove the two nuts securing the engine sound drum to the intake manifold.



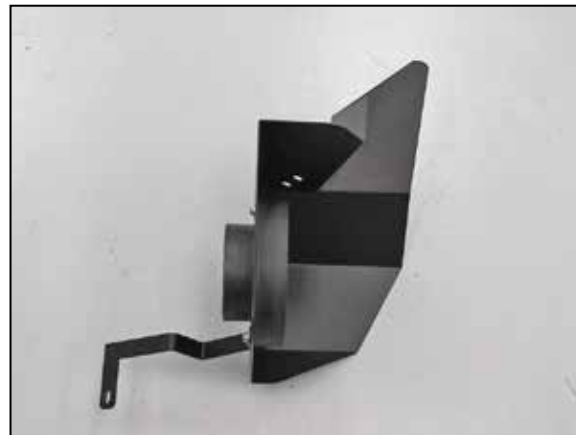
11. Loosen the hose clamp securing the engine sound tube to the fitting in the firewall.



12. Remove the engine sound drum assembly from the vehicle.



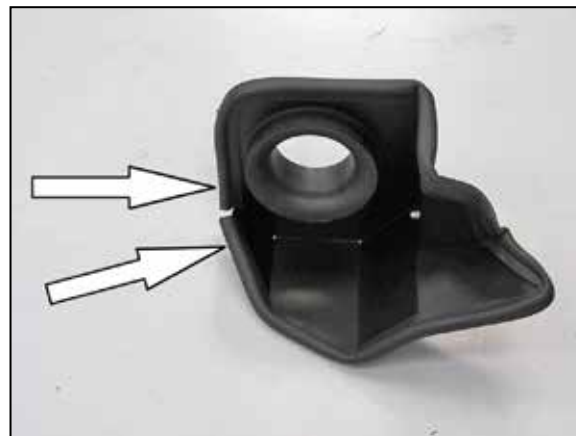
13. Install the provided cap onto the fitting in the fire wall for the sound drum.



14. Install the filter adapter and mounting bracket (064304) onto the heat shield as shown using the provided hardware.



15. Install the mounting bracket (064305) onto the heat shield as shown using the provided hardware.



16. Install the provided edge trim onto the heat shield as shown.
NOTE: Some trimming of the edge trim will be necessary.



17. Install the K&N® air filter onto the filter adapter and secure with the provided hose clamp.



18. Install the provided rubber mounted stud onto the air box mounting location on the inner fender as shown.



19. Remove the bolt securing the coolant tube to the engine.



20. Set the filter assembly into position and secure to the rubber mount and coolant tube mounting location with the provided hardware.
NOTE: Be sure to place the spacer between bracket #064305 and the coolant tube bracket.



21. Remove the bolt securing the air sensor into the factory air box and then remove the sensor.



22. Install the air sensor into the K&N® intake tube and secure with the provided hardware.



23. Install the 90° vent fitting into the K&N® intake tube as shown.

NOTE: Plastic NPT fittings are easy to cross thread. Install the vent fitting "hand" tight, then turn it two complete turns with a wrench.



24. Install the straight vent fitting into the K&N® intake tube as shown.

NOTE: On vehicles that are not equipped with a vent line attached to the sound tube, install the provided npt plug into the intake tube.



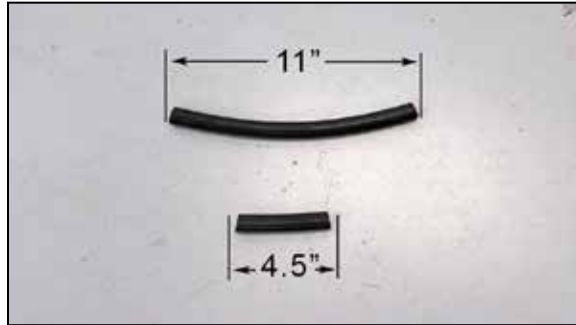
25. Install the hump hose (08418) onto the filter adapter as shown using the provided hose clamp.



26. Install the step hose (08497) onto the K&N® intake tube as shown. Do not tighten the hose clamp at this time.



27. Install the K&N® intake tube all the way into the hump hose and then align with the throttle body. Install the step hose onto the throttle body and adjust the tube and hoses for best fit. Then secure the tube and hoses with the provided hose clamps.



28. Cut the provided breather hose as shown. The short section should be 4.5" long; the long section should be 11" long.



29. Install the provided hose menders into the cut sections of breather hose as shown. The 1/2" hose mender will go into the 11" breather hose. The 1/2" to 5/8" hose mender will go in the 4.5" breather hose.

NOTE: On vehicles that are not equipped with the vent hose attached to the sound tube, the 1/2" hose mender and 11" breather hose will not be used.



30. On vehicles equipped with a vent hose attached to the sound tube, install the 11" breather hose onto the fitting in the intake tube and then attach the hose mender into the EVAP breather hose as shown.



31. Install the 4.5" breather hose onto the 90° fitting in the K&N® intake tube and then attach the hose mender into the crank case breather hose as shown.



32. Reconnect the air sensor electrical connection.



33. Reinstall the fresh air intake scoop and secure with the factory hardware.



34. Reinstall the engine cover.



35. Reconnect the vehicle's negative battery cable. Double check to make sure everything is tight and properly positioned before starting the vehicle.

36. The C.A.R.B. exemption sticker, (attached), must be visible under the hood so that an emissions inspector can see it when the vehicle is required to be tested for emissions. California requires testing every two years, other states may vary.

37. It will be necessary for all K&N® high flow intake systems to be checked periodically for realignment, clearance and tightening of all connections. Failure to follow the above instructions or proper maintenance may void warranty.

ROAD TESTING:

1. Start the engine with the transmission in neutral or park, and the parking brake engaged. Listen for air leaks or odd noises. For air leaks secure hoses and connections. For odd noises, find cause and repair before proceeding. This kit will function identically to the factory system except for being louder and much more responsive.

2. Test drive the vehicle. Listen for odd noises or rattles and fix as necessary.

3. If road test is fine, you can now enjoy the added power and performance from your kit.

4. K&N Engineering, Inc., requires cleaning the intake system's air filter element every 100,000 miles. When used in dusty or off-road environments, our filters will require cleaning more often. We recommend that you visually inspect your filter once every 25,000 miles to determine if the screen is still visible. When the screen is no longer visible some place on the filter element, it is time to clean it. To clean and re-oil, purchase our filter Recharger® service kit, part number 99-5050 or 99-5000 and follow the easy instructions.