



TYPHOON INTAKE SYSTEMS

INSTALLATION INSTRUCTIONS

69-4536TS

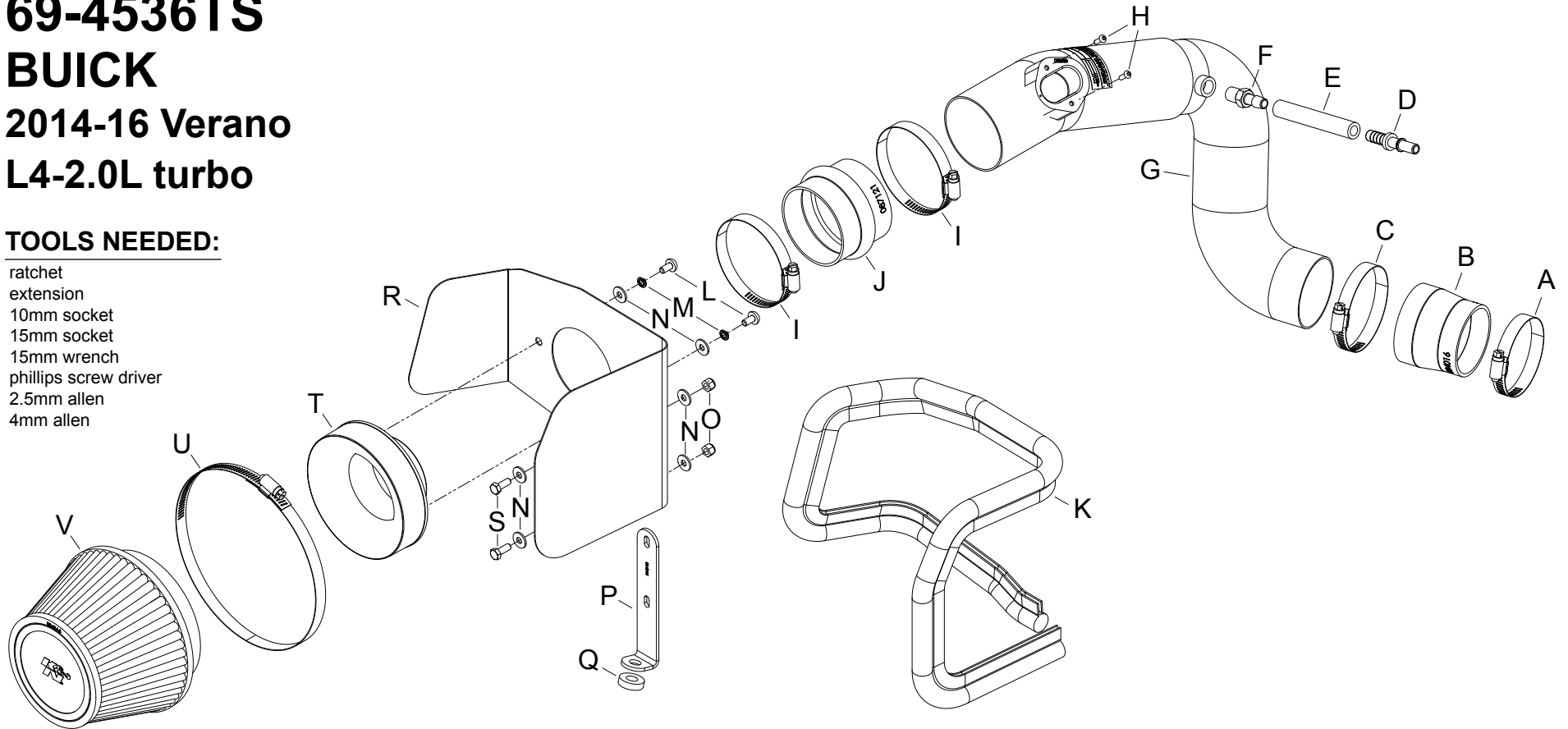
BUICK

2014-16 Verano

L4-2.0L turbo

TOOLS NEEDED:

- ratchet
- extension
- 10mm socket
- 15mm socket
- 15mm wrench
- phillips screw driver
- 2.5mm allen
- 4mm allen



PARTS LIST:

Description	Qty.	Part #	Description	Qty.	Part #	Description	Qty.	Part #
A HOSE CLAMP #40	1	08554	H SCREW; M4- .7 X 12, BUTTON	2	07726	O NUT; 6MM NYLOCK, HEXHEAD	2	07512
B HOSE; 2-3/4" TO 2-1/2" ID	1	084016	I HOSE CLAMP #48	2	08601	P BRACKET; "L", 69-4536, STL	1	064344
C HOSE CLAMP #44 STAINLESS	1	08560	J HOSE; 3" ID X 2-1/2" L HUMP	1	087121	Q SPACER; 0.937"OD X .437"ID	1	21715
D VENT; STRT, 3/8" BARB	1	82631	K EDGE TRIM (.46")	1	102487	R HEAT SHIELD	1	073232
E HOSE; 3/8"ID X 4"L	1	5-1004	L BOLT; M6 X 1.00" 12MM, SS	2	07794	S BOLT; 6MM-1.00 X 16MM, SS	2	07812
F VENT; STRT, 3/8"HOSE, 1/4"	1	08047	M WASHER, M6 SPLIT LOCK ZINC	2	1-3025	T ADAPTER; FILTER, 3.0"OD	1	21569
G INTAKE TUBE	1	27667S	N WASHER; 6MM FLAT, SS	6	08269	U HOSE CLAMP #80	1	08694
						V AIR FILTER	1	RU-5163

NOTE: FAILURE TO FOLLOW INSTALLATION INSTRUCTIONS AND NOT USING THE PROVIDED HARDWARE MAY DAMAGE THE INTAKE TUBE, THROTTLE BODY AND ENGINE.

TO START:

1. Turn off the ignition and disconnect the negative battery cable.

NOTE: Disconnecting the negative battery cable erases pre-programmed electronic memories. Write down all memory settings before disconnecting the negative battery cable. Some radios will require an anti-theft code to be entered after the battery is reconnected. The anti-theft code is typically supplied with your owner's manual. In the event your vehicles anti-theft code cannot be recovered, contact an authorized dealership to obtain your vehicles anti-theft code.



2. Disconnect the mass air sensor electrical connection.



3. Loosen the hose clamp that secures the intake hose to the air filter housing.



4. Disconnect the air filter housing drain.



5. Lift up the air filter housing to dislodge it from the mounting grommets and then remove it from the vehicle.

NOTE: Remove the drain pipe at this time.



6. Disconnect the crank case vent quick disconnect fitting and then loosen the hose clamp that secures the intake tube to the turbo inlet. Remove the intake hose assembly.

NOTE: K&N Engineering, Inc., recommends that customers do not discard factory air intake.



7. Install the provided coupling hose (084016) onto the turbo inlet and secure with the provided hose clamp.



8. Install the provided filter adapter into the heat shield and secure with the provided hardware.



9. Install the provided edge trim onto the heat shield as shown.



10. Install the provided heat shield mounting bracket (064344) onto the heat shield using the provided hardware.



11. Remove the front motor mount bolt shown.
NOTE: This bolt will be reused in the next step.



12. Using the factory bolt from the previous step, install the heat shield and spacer onto the motor mount as shown.

NOTE: Do not completely tighten at this time. The spacer is to be placed between the bracket and motor mount. Do not completely tighten the bolt at this time.



13. Install the provided coupler (087121) onto the filter adapter and secure with the provided hose clamp.



14. Remove the mass air sensor from the factory air filter housing.



15. Install the mass air sensor into the K&N® intake tube and secure with the provided hardware.



16. Install the provided vent fitting into the K&N® intake tube as shown.
NOTE: Plastic NPT fittings are easy to cross thread. Install the vent fitting "hand" tight, then turn it two complete turns with a wrench.



17. Install the K&N® intake tube into the turbo coupler and then into the filter adapter coupler. Adjust the tube and heat shield for best fit and then secure the hose clamps and heat shield hardware.



18. Install the provided quick disconnect union into the provided crank case breather hose.



19. Install the crank case breather assembly into the factory quick disconnect fitting and then onto the vent fitting installed into the K&N® intake tube.
NOTE: Some trimming of the vent hose may be necessary.



20. Reconnect the mass air sensor electrical connection.



21. Install the K&N® air filter and secure with the provided hose clamp.
NOTE: Drycharger® air filter wrap; part # RU-5163DK is available to purchase separately.



22. Reconnect the vehicle's negative battery cable. Double check to make sure everything is tight and properly positioned before starting the vehicle.

23. It will be necessary for all K&N® high flow intake systems to be checked periodically for realignment, clearance and tightening of all connections. Failure to follow the above instructions or proper maintenance may void warranty.

ROAD TESTING:

1. Start the engine with the transmission in neutral or park, and the parking brake engaged. Listen for air leaks or odd noises. For air leaks secure hoses and connections. For odd noises, find cause and repair before proceeding. This kit will function identically to the factory system except for being louder and much more responsive.

2. Test drive the vehicle. Listen for odd noises or rattles and fix as necessary.

3. If road test is fine, you can now enjoy the added power and performance from your kit.

4. K&N Engineering, Inc., requires cleaning the intake system's air filter element every 100,000 miles. When used in dusty or off-road environments, our filters will require cleaning more often. We recommend that you visually inspect your filter once every 25,000 miles to determine if the screen is still visible. When the screen is no longer visible some place on the filter element, it is time to clean it. To clean and re-oil, purchase our filter Recharger® service kit, part number 99-5050 or 99-5000 and follow the easy instructions.