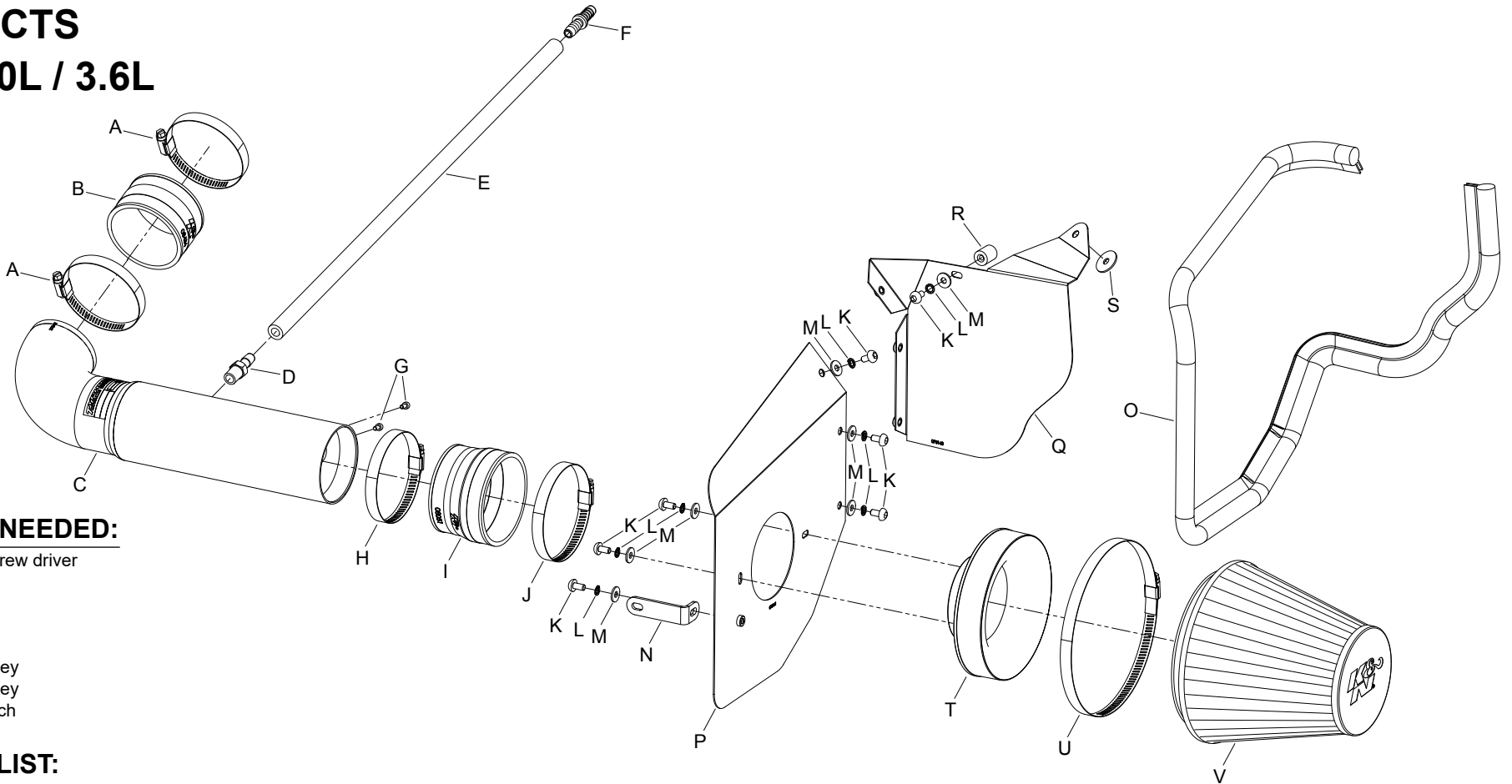




TYPHOON INTAKE SYSTEMS

INSTALLATION INSTRUCTIONS

69-4527TS
CADILLAC
2012 CTS
V6-3.0L / 3.6L



TOOLS NEEDED:

- flat blade screw driver
- ratchet
- extension
- 10mm
- T15 torx
- 4mm allen key
- 3mm allen key
- 10mm wrench

PARTS LIST:

Description	Qty.	Part #	Description	Qty.	Part #	Description	Qty.	Part #
A Hose Clamp #48	2	08601	H Hose Clamp #52	1	08610	O Edge Trim (48")	1	102485
B Hose; 3" ID X 2"L Molded	1	08434	I Hose; 3-1/2" To 3-1/4" ID X 2-1/2"	1	08051	P Heat Shield	1	073141
C Intake Tube	1	27342TS	J Hose Clamp #56	1	08620	Q Heat Shield #2	1	073143
D Vent; STRT, 3/8" Hose, 1/4"NPT	1	08047	K Bolt; M6 X 1.00" 12MM	7	07794	R Threaded Boss; 5/8" OD X 3/4"L	1	081004
E Hose; 3/8" ID X 24"L, Silicone	1	08493	L Washer; M6 Split Lock Zinc	7	1-3025	S Washer; 1" X .300 X .100 Rubber	1	21685
F Vent; STRT 3/8" Hose- 38" Hose	1	08041	M Washer; 6MM Flat, SS	7	08269	T Adapter; Universal, 6" Filter 3.5"	1	21512-1
G Bolt; M4-0.07 8MM, A/H Cap, SS	2	07733	N Bracket; "L", TB/PC	1	07805	U Hose Clamp #104	1	08697
						V Filter Charger	1	RC-2960XD

NOTE: FAILURE TO FOLLOW INSTALLATION INSTRUCTIONS AND NOT USING THE PROVIDED HARDWARE MAY DAMAGE THE INTAKE TUBE, THROTTLE BODY AND ENGINE.

TO START:

1. Turn off the ignition and disconnect the negative battery cable.

NOTE: Disconnecting the negative battery cable erases pre-programmed electronic memories. Write down all memory settings before disconnecting the negative battery cable. Some radios will require an anti-theft code to be entered after the battery is reconnected. The anti-theft code is typically supplied with your owner's manual. In the event your vehicles anti-theft code cannot be recovered, contact an authorized dealership to obtain your vehicles anti-theft code.



2. Remove the oil fill cap and then lift off the engine cover. Reinstall the oil cap after the engine cover has been removed.



3. Lift up the strut tower cover to unhook it from the holding pins and then remove the cover.



4. Disconnect the crank case vent tube coupler from the rear of the driver's side valve cover.



5. Loosen the hose clamps securing the intake tube to the throttle body and air filter housing, then remove the intake tube and crank case vent from the vehicle.



6. Disconnect the mass air sensor electrical connection.



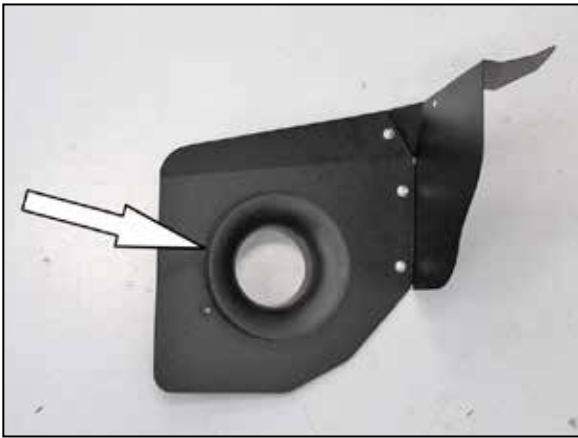
7. Remove the bolt securing the factory air box to the inner fender.
NOTE: This bolt will be reused in a latter step.



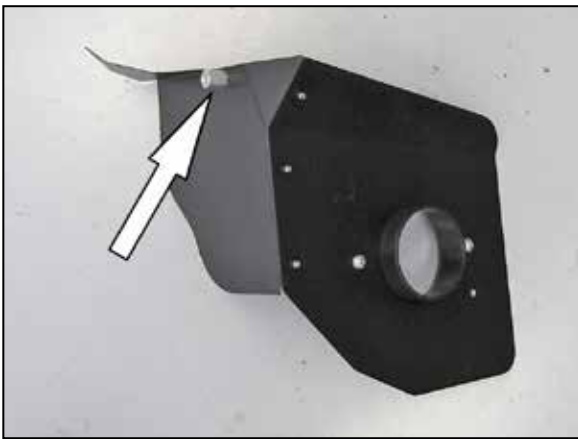
8. Pull up the coolant hoses from the air box and then remove the air box from the vehicle.
NOTE: K&N Engineering, Inc., recommends that customers do not discard factory air intake.



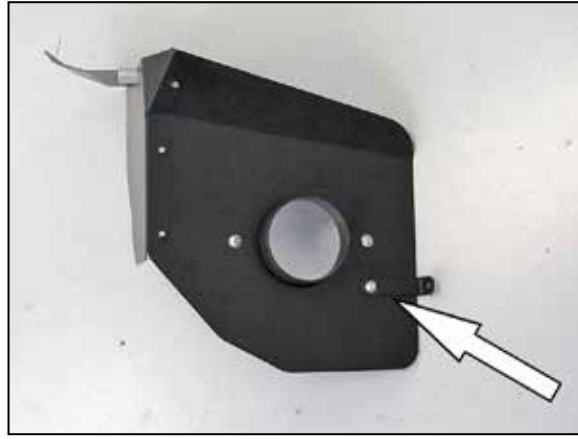
9. Assemble the two heat shield half's using the provided hardware.



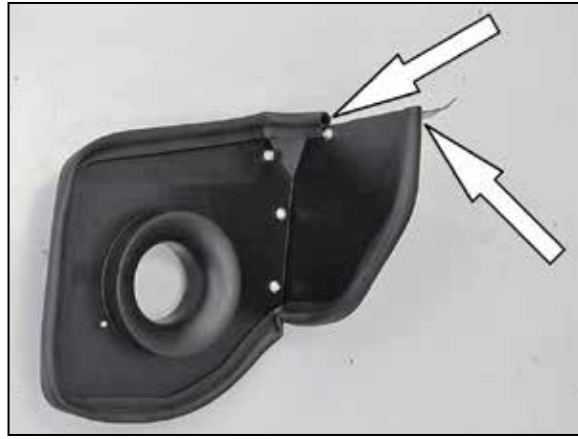
10. Install the filter adapter into the heat shield using the provided hardware.



11. Install the provided aluminum stand-off onto the heat shield as shown using the provided hardware.



12. Install the provided "L" bracket (07805) onto the heat shield as shown using the provided hardware.



13. Install the provided edge trim onto the heat shield as shown.
NOTE: Some trimming of the edge trim will be necessary.



14. Install the K&N® air filter onto the filter adapter and secure with the provided hose clamp.
NOTE: Drycharger® air filter wrap; part # 22-8049DK is available to purchase separately.



15. Remove the fan shroud mounting bolt shown.
NOTE: This bolt will be reused in the next step.



16. Set the heat shield assembly into position and secure it the fan shroud and inner fender with the factory bolts.



17. Install the provided hose (08434) onto the throttle body and secure with the provided hose clamps.



18. Install the provided hose (08051) onto the filter adapter and secure with the provided hose clamps.



19. Remove the mass air sensor from the factory air box.



20. Install the mass air sensor into the K&N® intake tube and secure with the provided hardware.



21. Install the provided crank case vent into the K&N® intake tube as shown.
NOTE: Plastic NPT fittings are easy to cross thread. Install the vent fitting "hand" tight, then turn it two complete turns with a wrench.



22. Install the K&N® intake tube into the hose at the filter adapter and then into the hose on the throttle body, align the tube for proper fit and then secure with the provided hose clamps.



23. Remove the crank case vent tube coupler from the vent tube as shown.



24. Install the union fitting into the coupler and then attach the provided crank case vent hose to the union.



25. Reconnect the coupler to the valve cover port and then route the crank case hose to the fitting installed into the K&N® intake tube and connect.



26. Reconnect the mass air sensor electrical connection.



27. Reinstall the strut tower cover and snap it to the stand-off attached to the heat shield.



28. Reinstall the engine cover and oil fill cap.



29. Reconnect the vehicle's negative battery cable. Double check to make sure everything is tight and properly positioned before starting the vehicle.

30. The C.A.R.B. exemption sticker, (attached), must be visible under the hood so that an emissions inspector can see it when the vehicle is required to be tested for emissions. California requires testing every two years, other states may vary.

31. It will be necessary for all K&N® high flow intake systems to be checked periodically for realignment, clearance and tightening of all connections. Failure to follow the above instructions or proper maintenance may void warranty.

ROAD TESTING:

1. Start the engine with the transmission in neutral or park, and the parking brake engaged. Listen for air leaks or odd noises. For air leaks secure hoses and connections. For odd noises, find cause and repair before proceeding. This kit will function identically to the factory system except for being louder and much more responsive.

2. Test drive the vehicle. Listen for odd noises or rattles and fix as necessary.

3. If road test is fine, you can now enjoy the added power and performance from your kit.

4. K&N Engineering, Inc., requires cleaning the intake system's air filter element every 100,000 miles. When used in dusty or off-road environments, our filters will require cleaning more often. We recommend that you visually inspect your filter once every 25,000 miles to determine if the screen is still visible. When the screen is no longer visible some place on the filter element, it is time to clean it. To clean and re-oil, purchase our filter Recharger® service kit, part number 99-5050 or 99-5000 and follow the easy instructions.