



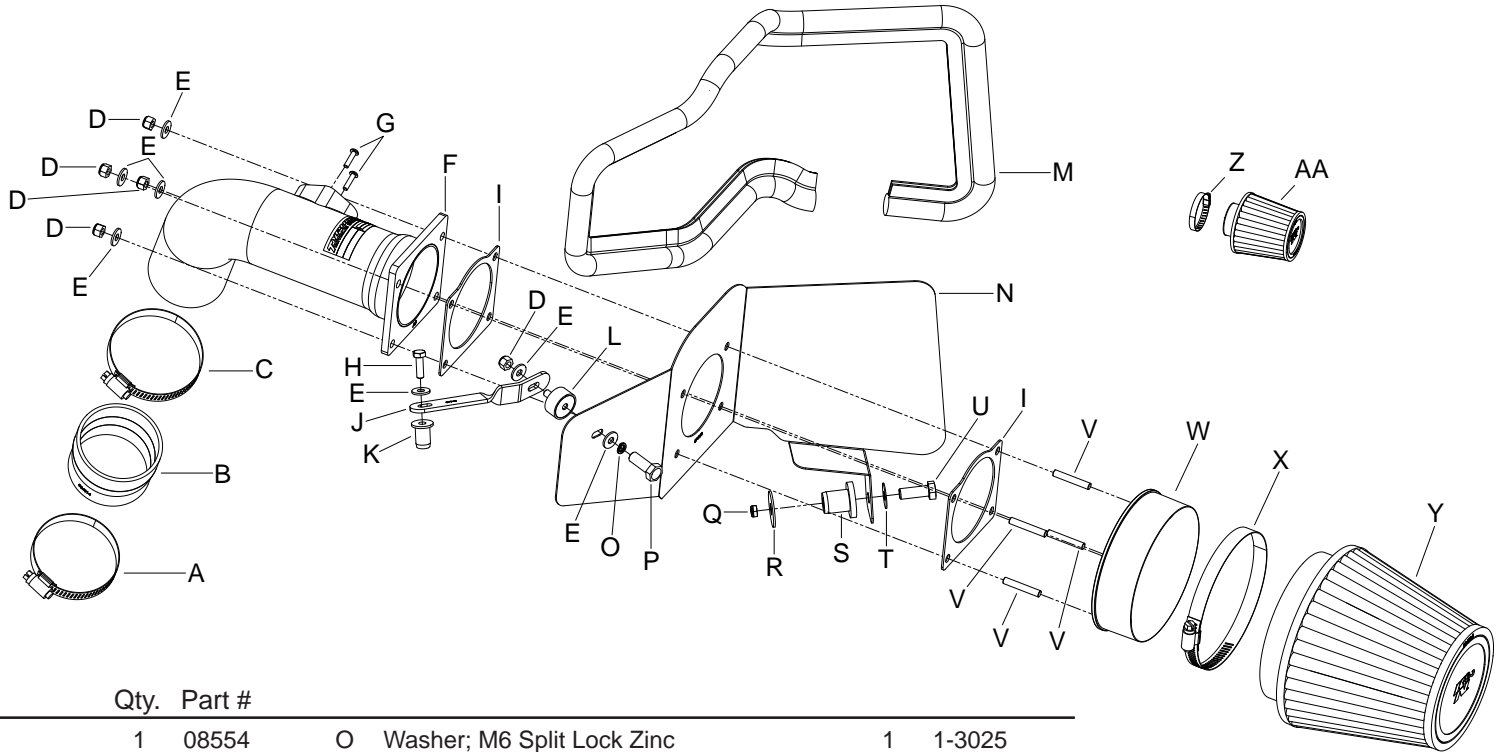
TYPHOON INTAKE SYSTEMS

INSTALLATION INSTRUCTIONS

69-4522TS CHEVROLET 2011-12 Cruze L4-1.8L

TOOLS NEEDED:

2.5mm Allen
10mm Socket
14mm Socket
7/16" Socket
Extension
Flat Blade Screwdriver
Phillips Screwdriver
Pliers
Ratchet



PARTS LIST:

Description	Qty.	Part #	Description	Qty.	Part #
A Hose Clamp #40	1	08554	O Washer; M6 Split Lock Zinc	1	1-3025
B Hose; 2-3/4" to 2-5/8" ID X 2"L TPRD	1	084014	P Bolt; 6MM-1.00 X 16mm, SS	1	07812
C Hose Clamp # 44 Stainless	1	08560	Q Nut; 3/8-16, Nylock, Lock Nut	1	08255
D Nut; 6MM Nylock, Hexhead, SS	5	07512	R Washer; 1.25"OD X .40"ID X .062 Thk. ZN	1	08126
E Washer; 6MM Flat, SS	7	08269	S Insert; 3/8-16 X 3/400 X 15/16L, Rubber	1	08163
F Intake Tube	1	27545TS	T Washer; 3/8" Flat Washer, SS	1	08134
G Screw; M4-.7 X 16MM, Buttonhead SS	2	07793	U Bolt; 3/8"-16 X 1-1/4"L SS Hex Head Bolt	1	07779
H Bolt; 1/4-20 X 1"L Hexhead	1	08314	V Stud; 6MM-1.00 X 35mm L, SS	4	08220
I Gasket; 63-1034, 1/16" Neoprene	2	09202	W Adaptor; #350	1	21510
J Bracket; 57-9000, Long, FIN., TB/PC	1	07945	X Hose Clamp #80	1	08694
K Insert; 1/4"-20 X .500" OD X .785"L Rubber	1	081011	Y Air Filter	1	RU-5147
L Stud; Rubber MNT, M/F, 1/2"L X 1"W,	1	070228	Z Hose Clamp #20 Mini	1	08431
M Edge Trim (44")	1	102486	AA Air Filter	1	RC-2540
N Heat Shield	1	074103			

NOTE: FAILURE TO FOLLOW INSTALLATION INSTRUCTIONS AND NOT USING THE PROVIDED HARDWARE MAY DAMAGE THE INTAKE TUBE, THROTTLE BODY AND ENGINE.

TO START:

1. Turn off the ignition and disconnect the negative battery cable.

NOTE: Disconnecting the negative battery cable erases pre-programmed electronic memories. Write down all memory settings before disconnecting the negative battery cable. Some radios will require an anti-theft code to be entered after the battery is reconnected. The anti-theft code is typically supplied with your owner's manual. In the event your vehicles' anti-theft code cannot be recovered, contact an authorized dealership to obtain your vehicles anti-theft code.



2. Disconnect the mass air sensor electrical connection.



3. Remove the air box drain pipe from the front of the air box.



4. Loosen the hose clamp that secures the factory intake tube to the throttle body and then disconnect the intake tube from the throttle body.



5. On vehicles equipped with "Air Injection". Disconnect the air injection hose from the air injection pump as shown.



6. Lift up the air box assembly to dislodge it from the mounting grommets; then remove the air box assembly from the vehicle.
NOTE: K&N Engineering, Inc., recommends that customers do not discard factory air intake.



7. Remove the air box drain pipe from the vehicle.
NOTE: The drain pipe is connected to the inner fender by two plastic clips that will need to be removed or clipped.



8. Install the provided silicone hose (084014) onto the throttle body and secure with the provided hose clamp.



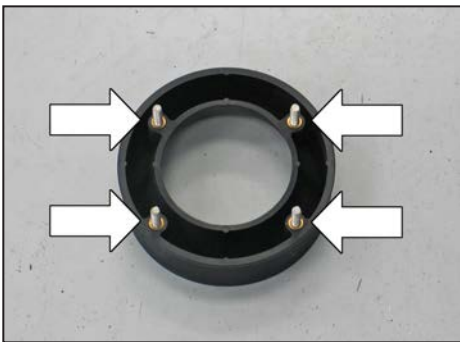
9. Install the provided rubber mounted stud onto the provided heat shield bracket (07945) as shown.



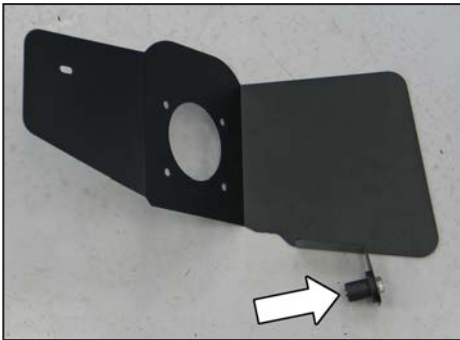
10. Remove the plastic plug and then install the inserted nut into the strut tower as shown.



11. Install the heat shield bracket assembly onto the strut tower as shown using the provided hardware.



12. Install the four 6mm studs into the filter adapter as shown.



13. Install the 3/8" inserted nut onto the heat shield using the provided hardware as shown.



14. Install the filter adapter and K&N® intake tube onto the heat shield as shown using the provided hardware and gaskets.

NOTE: The gaskets are to be installed on each side of the heat shield, between the tube and heat shield and between the adapter and heat shield.



15. Remove the two screws securing the mass air sensor into the factory air box; remove the sensor from the air box.



16. Install the mass air sensor into the K&N® intake tube and secure with the provided hardware.

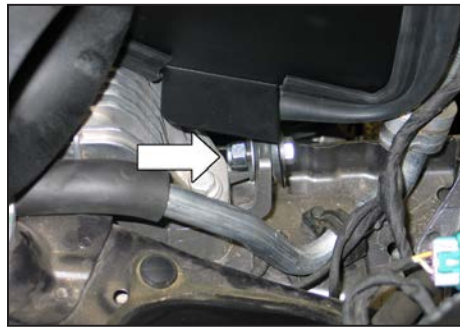


17. Install the provided edge trim onto the heat shield as shown.

NOTE: Some trimming of the edge trim will be necessary.



18. Set the intake assembly into position so the intake tube is inserted into the silicone hose, the rubber insert mounts into the front lower air box mount and the rubber mounted stud is attached to the heat shield.



19. Secure the intake assembly with the provided hardware and hose clamp.

NOTE: Install the provided fender washer and nut onto the lower front mount as shown.



20. Install the K&N® air filter onto the filter adapter and secure with the provided hose clamp.

NOTE: After installing the air filter, check to ensure that the air filter is not rubbing the engine mount. Loosen and adjust the intake system as necessary and then retighten once best fitment is achieved.



21. Reconnect the mass air sensor electrical connection.



22. On vehicles equipped with air injection, remove the air injection hose from the factory air box. Cut the band clamp and disconnect the 90° quick disconnect fitting from the air injection hose.



23. On vehicles equipped with air injection, apply the provided filter oil to the K&N® breather filter. Then install the K&N® breather filter onto the 90° air injection fitting and secure with the provided hose clamp.



24. On vehicles equipped with air injection, install the air injection breather assembly onto the air injection pump as shown.



25. Reconnect the vehicle's negative battery cable. Double check to make sure everything is tight and properly positioned before starting the vehicle.

26. The C.A.R.B. exemption sticker, (attached), must be visible under the hood so that an emissions inspector can see it when the vehicle is required to be tested for emissions. California requires testing every two years, other states may vary.

27. It will be necessary for all K&N® high flow intake systems to be checked periodically for realignment, clearance and tightening of all connections. Failure to follow the above instructions or proper maintenance may void warranty.

ROAD TESTING:

1. Start the engine with the transmission in neutral or park, and the parking brake engaged. Listen for air leaks or odd noises. For air leaks secure hoses and connections. For odd noises, find cause and repair before proceeding. This kit will function identically to the factory system except for being louder and much more responsive.

2. Test drive the vehicle. Listen for odd noises or rattles and fix as necessary.

3. If road test is fine, you can now enjoy the added power and performance from your kit.

4. K&N Engineering, Inc., requires cleaning the intake system's air filter element every 100,000 miles. When used in dusty or off-road environments, our filters will require cleaning more often. We recommend that you visually inspect your filter once every 25,000 miles to determine if the screen is still visible. When the screen is no longer visible some place on the filter element, it is time to clean it. To clean and re-oil, purchase our filter Recharger® service kit, part number 99-5050 or 99-5000 and follow the easy instructions.