

TYPHOON INTAKE SYSTEMS



INSTALLATION INSTRUCTIONS

69-4000

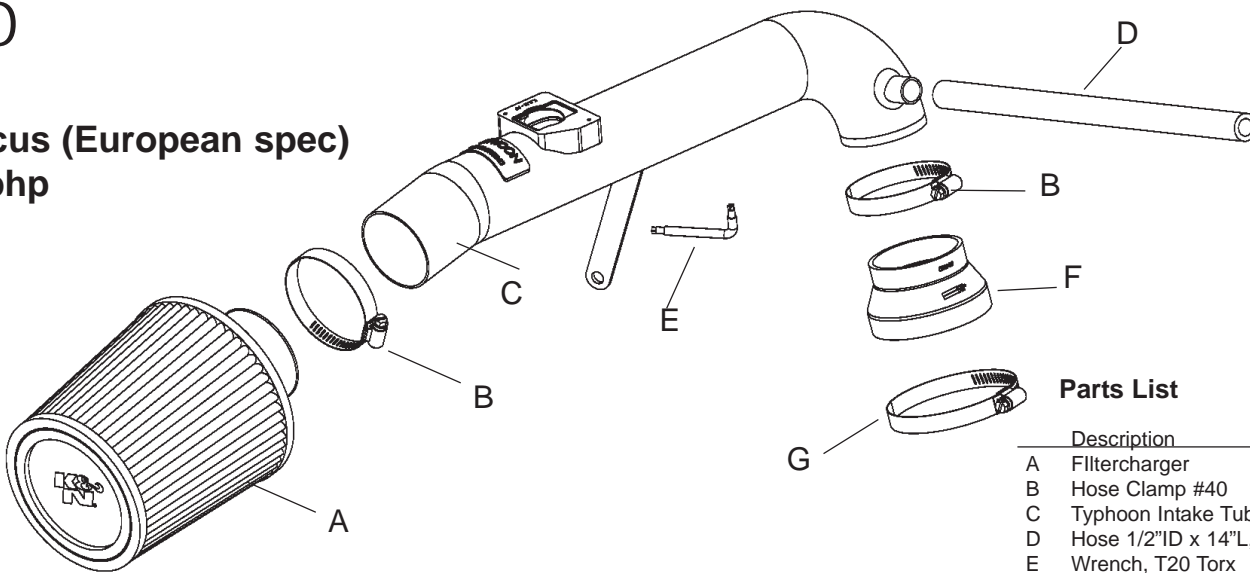
Ford

1998-2004, Focus (European spec)

2.0L 16v, 130 bhp

TOOLS NEEDED:

Flat blade screw driver
9/64 allen wrench (provided)
Ratchet
8mm socket
Torx T20 wrench(provided)

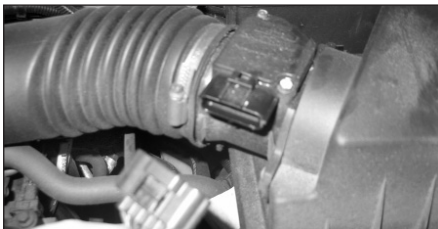


Parts List

	Description	Qty.	P/N
A	Filtercharger	1	KRU4860E
B	Hose Clamp #40	2	08554
C	Typhoon Intake Tube	1	27376
D	Hose 1/2"ID x 14"L, Silicone	1	08402
E	Wrench, T20 Torx	1	69801
F	Hose 2-1/2"ID to 3-1/4", Black	1	084050
G	Hose Clamp #48	1	08601

TO START:

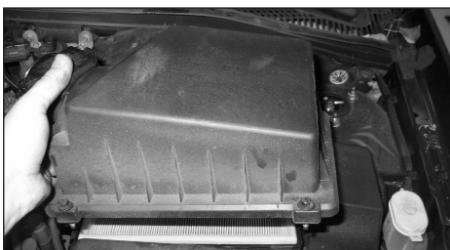
1. Turn the ignition OFF and disconnect the vehicle's negative battery cable.



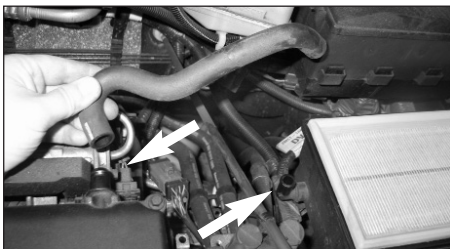
2. Disconnect the mass air sensor electrical connection as shown.



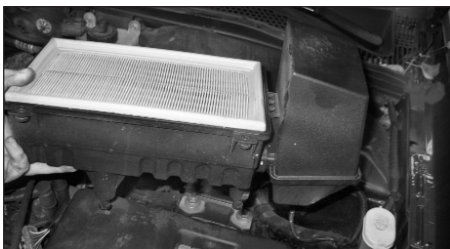
3. Loosen the hose clamps at the throttle body and at the mass air sensor, then, remove the stock intake tube as shown.



4. Remove the four bolts that secure the air cleaner cover, then remove the cover and filter as shown.



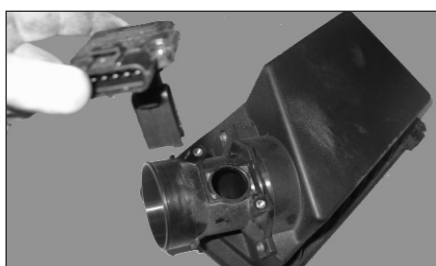
5. Remove the vent hose from the side of the lower air cleaner and valve cover.



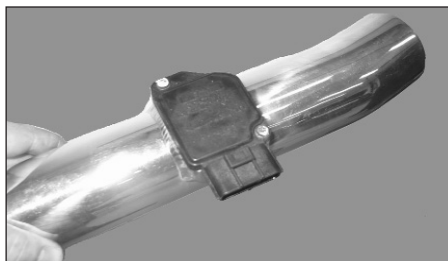
6. Pull firmly upwards to remove the lower air cleaner assembly as shown.



7. Install the provided silicone hose and hose clamps onto the throttle body as shown.



8. Remove the two bolts that secure the mass air sensor, then, remove the mass air sensor as shown.



9. Install the mass air sensor into the K&N Typhoon intake tube using the stock bolts from step 8.
NOTE: Before installing the mass air sensor, inspect the inside of the tube for any debris, then clean the inside out with water and a towel. Inspect the tube one more time before proceeding to the next step.



10. Remove the rear bolt on the ignition bracket as shown.



11. Install the K&N Typhoon intake tube into the silicone hose then line up the bracket with the ignition bracket and secure with the bolt from step 10 and tighten the hose clamps.



12. Using the provided vent hose, (Trim to fit), connect to the K&N Typhoon intake tube and valve cover as shown.



13. Install the K&N Filtercharger onto the K&N Typhoon intake tube and tighten with the provided hose clamp as shown.



14. Reconnect the mass air sensor electrical connection as shown.



15. Reconnect the negative battery cable and double check to make sure everything is tightened and properly positioned before starting the vehicle.



16. It will be necessary for all Typhoons to be checked periodically for realignment, clearance and tightening of all connections. Failure to follow the above instructions or proper maintenance may void warranty.

ROAD TESTING:

1. Start the engine with the transmission in neutral or park, and the parking brake engaged. Listen for air leaks or odd noises. For air leaks secure hoses and connections. For odd noises, find cause and repair before proceeding. This kit will function identically to the factory system except for being louder and much more responsive.
2. Test drive the vehicle. Listen for odd noises or rattles and fix as necessary.
3. If road test is fine, you can now enjoy the added power and performance from your kit.
4. K&N suggests checking the Filtercharger element periodically for excessive dirt build-up. When the element becomes covered in dirt (or once a year), service it according to the instructions on the Recharger service kit, part number 99-5000 or 99-5050.

Looking for dependable performance air intake systems?
Rely on K&N for quality and long-lasting products.