



TYPHOON INTAKE SYSTEMS

INSTALLATION INSTRUCTIONS

69-3529TP

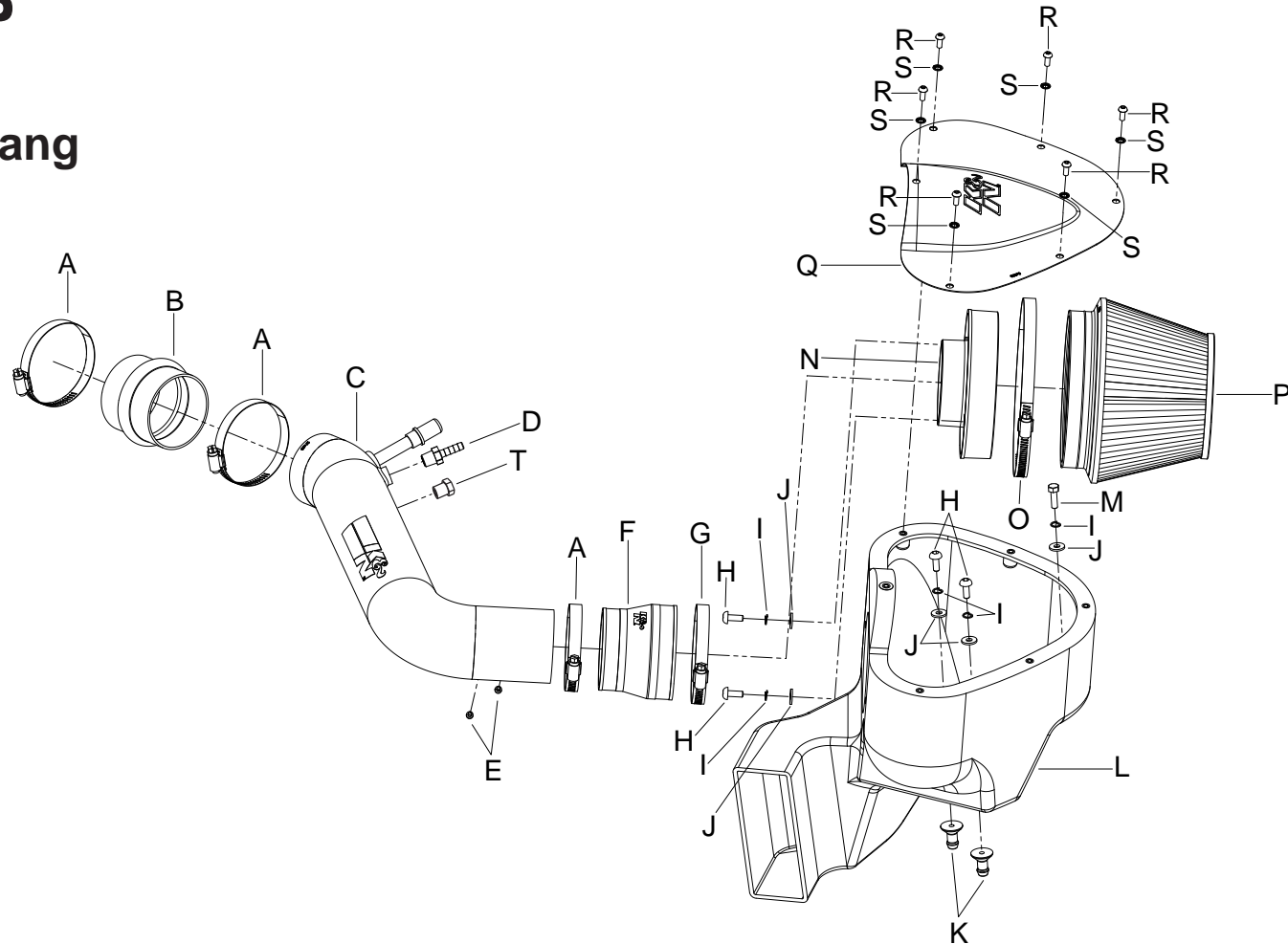
FORD

2011-14 Mustang

V6-3.7L

TOOLS NEEDED:

- Ratchet
- Extension
- 10mm Socket
- Flat Blade Screwdriver
- 5/8" Wrench
- 3mm Allen Wrench
- Pliers



PARTS LIST:

Description	Qty.	Part #	Description	Qty.	Part #	Description	Qty.	Part #
A Hose Clamp #48	3	08601	H Bolt; M6 X 1.00 X 16mm , SS	4	07730	O Hose Clamp #104	1	08697
B Hose; 3" ID X 3"L Hump Reinforced	1	08696	I Washer; 1/4" Lock, ZN	5	08198	P Air Filter	1	RC-2960XD
C Intake tube	1	27485TP	J Washer, 1/4" ID X 5/8" OD- SAE	5	08275	Q Lid	1	05870
D Vent; STRT, 3/8" Hose, 1/4 NPT, Plas	1	08047	K Nipple, Heat Shield Mount	2	8-186-1	R Bolt; M5-0.8 X 12mm B/H, SS	6	07734
E Bolt; M4 - 0.07 8mm, A/H Cap, SS	2	07733	L Air box	1	087245	S Washer; 5mm Internal Star Cut Lock	6	07724
F Hose; 3-1/2" To 3" ID X 3" L TPRD	1	08724	M Bolt; M6 X 1.00 X 20mm Hex, SS	1	07795	T Plug; 1/4 Npt, Plastic, Blk.	1	08032
G Hose Clamp #56	1	08620	N Adapter; Universal, 6" Filter 3.5" Coupler	1	21512-1			

NOTE: FAILURE TO FOLLOW INSTALLATION INSTRUCTIONS AND NOT USING THE PROVIDED HARDWARE MAY DAMAGE THE INTAKE TUBE, THROTTLE BODY AND ENGINE.

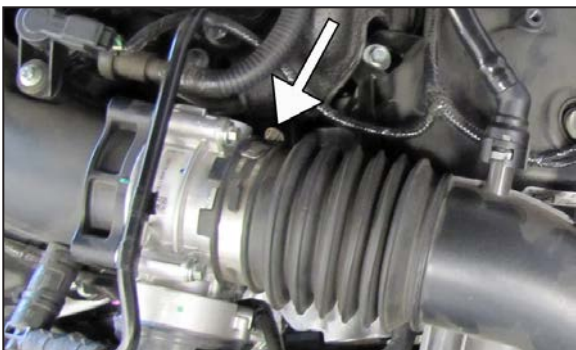
TO START:

1. Turn off the ignition and disconnect the negative battery cable.

NOTE: Disconnecting the negative battery cable erases pre-programmed electronic memories. Write down all memory settings before disconnecting the negative battery cable. Some radios will require an anti-theft code to be entered after the battery is reconnected. The anti-theft code is typically supplied with your owner's manual. In the event your vehicles' anti-theft code cannot be recovered, contact an authorized dealership to obtain your vehicles anti-theft code.



2. Disconnect the mass air sensor electrical connection.

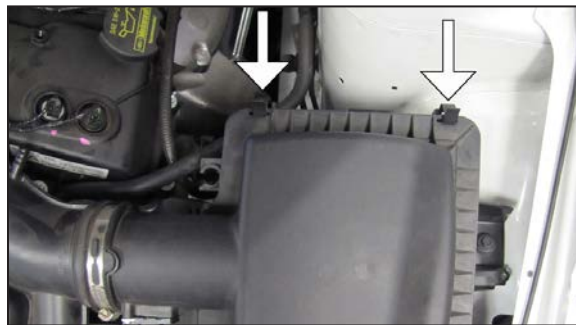


3. Loosen the hose clamp that secures the factory intake tube to the throttle body.



4. Release the locking tab securing the crank case vent hose to the intake tube, then disconnect the crank case vent hose and the EVAP hose from the factory intake tube.

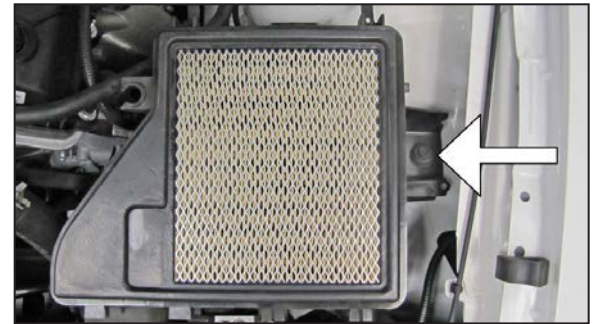
NOTE: Some models may not be equipped an EVAP vent line.



5. Release the two clips that secure the upper air box to the lower air box housing.



6. Remove the upper air box/tube assembly from the vehicle.



7. Remove the bolt that secures the lower air box to the inner fender shown.

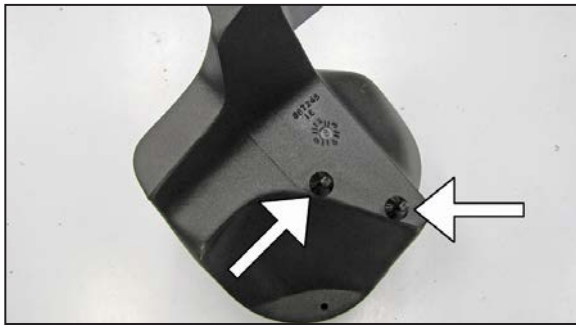


8. Remove the lower air box housing from the vehicle.

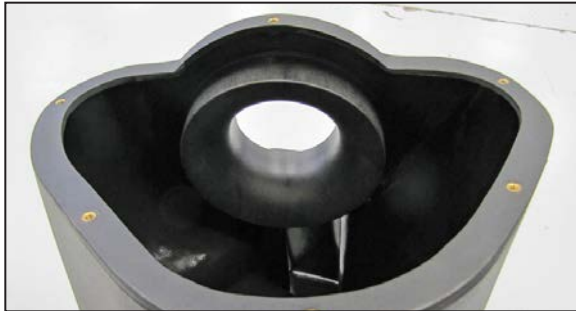
NOTE: K&N Engineering, Inc., recommends that customers do not discard factory air intake.



9. Install the provided silicone hose (08696) onto the throttle body and secure with the provided hose clamp as shown.



10. Install the two provided mounting studs to the bottom of the K&N® air box as shown and secure with the provided hardware.



11. Install the K&N® filter adapter into the K&N® air box and secure with the provided hardware.



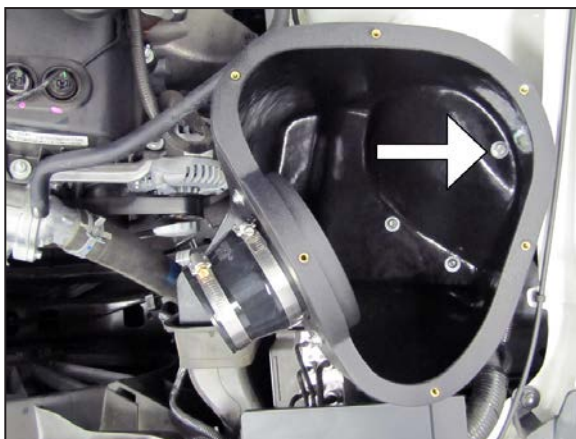
12. Install the provided silicone hose (08724) onto the K&N® filter adapter and secure with the provided hose clamp.



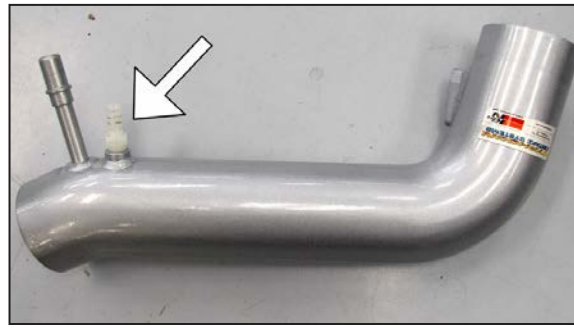
13. Remove the factory air box mounting grommet from the factory lower air box housing.



14. Install the air box mounting grommets onto the mounting studs installed onto the K&N® air box during step #10.



15. Install the K&N® air box onto the inner fender so the mounting grommets are inserted into the mounting holes and then secure the air box with the provided hardware.



16. Install the provided NPT fitting into the K&N® intake tube as shown.

NOTE: On vehicles that are not equipped with an EVAP vent line, install the provided ¼ npt plug into the K&N® intake tube.
NOTE: Plastic NPT fittings are easy to cross thread. Install the vent fitting "hand" tight, then turn it two complete turns with a wrench.



17. Remove the two screws securing the mass air sensor into the factory air box and then remove the mass air sensor.



18. Install the mass air sensor into the K&N® intake tube and secure with the provided hardware.



19. Install the K&N® intake tube into the silicone hose at the throttle body and then into the silicone hose on the filter adapter, secure the intake tube with the provided hose clamps.



20. Connect the crank case vent hose and EVAP hose to the K&N® intake tube as shown.
NOTE: Vehicles not equipped with an EVAP vent line should have this port plugged with the provided ¼ npt plug.



21. Install the K&N® air filter onto the filter adapter and secure with the provided hose clamp.



22. Install the air box cover and secure with the provided hardware.



23. Reconnect the vehicle's negative battery cable. Double check to make sure everything is tight and properly positioned before starting the vehicle.

24. The C.A.R.B. exemption sticker, (attached), must be visible under the hood so that an emissions inspector can see it when the vehicle is required to be tested for emissions. California requires testing every two years, other states may vary.

25. It will be necessary for all K&N® high flow intake systems to be checked periodically for realignment, clearance and tightening of all connections. Failure to follow the above instructions or proper maintenance may void warranty.

ROAD TESTING:

1. Start the engine with the transmission in neutral or park, and the parking brake engaged. Listen for air leaks or odd noises. For air leaks secure hoses and connections. For odd noises, find cause and repair before proceeding. This kit will function identically to the factory system except for being louder and much more responsive.

2. Test drive the vehicle. Listen for odd noises or rattles and fix as necessary.

3. If road test is fine, you can now enjoy the added power and performance from your kit.

4. K&N Engineering, Inc., requires cleaning the intake system's air filter element every 100,000 miles. When used in dusty or off-road environments, our filters will require cleaning more often. We recommend that you visually inspect your filter once every 25,000 miles to determine if the screen is still visible. When the screen is no longer visible some place on the filter element, it is time to clean it. To clean and re-oil, purchase our filter Recharger® service kit, part number 99-5050 or 99-5000 and follow the easy instructions.