



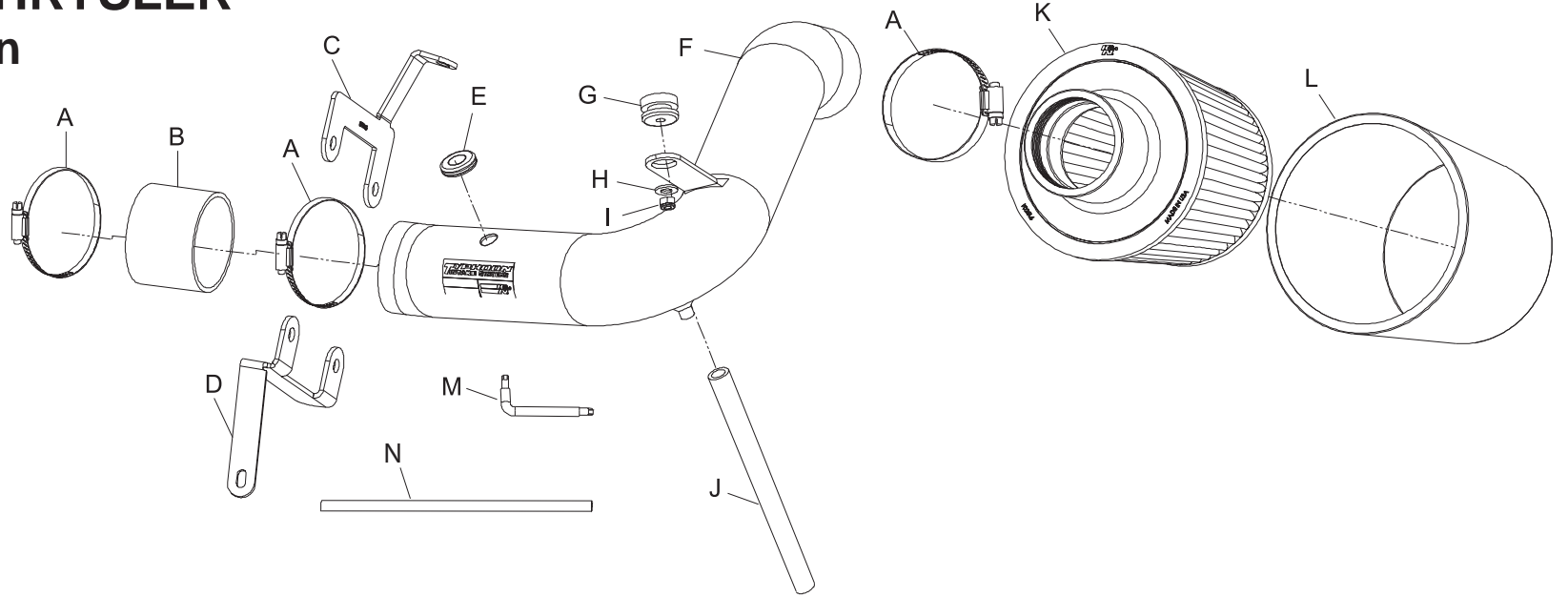
# TYPHOON INTAKE SYSTEMS

## INSTALLATION INSTRUCTIONS

**69-2520TP**  
**69-2520TR**  
**DODGE / CHRYSLER**  
**2000-05 Neon**  
**L4-2.0L**

**TOOLS NEEDED:**

- Flat Blade Screwdriver
- Phillips Screwdriver
- Ratchet
- 10mm Socket
- 13mm Socket



**PARTS LIST:**

Description	Qty.	Part #	Description	Qty.	Part #	Description	Qty.	Part #
A Hose Clamp #40	3	08554	F Intake Tube	1	27131	K Air Filter	1	RU-4950
B Hose; 2-1/2"ID X 2"L,	1	08284	G Vibration Grommet	1	082002	L Drycharger®	1	RX-4990DK
C Bracket; "F" Throttle	1	070063	H Washer; 8MM Flat, SS	1	08272	M Wrench; T20 Torx	1	69801
D Bracket; "F" Radiator	1	070062	I Nut; 6MM Nylock, SS	1	07512	N Edge Trim	1	8-3014
E Grommet; ATS	1	08167	J Hose; 10MM X 22"L,	1	084060			

**WARNING:** The K&N® Drycharger® included with this kit must be installed on the K&N® air filter because of the harsh terrain conditions these vehicles are intended to operate in. Please be aware the Drycharger® is water repellent, not water proof. The K&N® high flow intake system is a performance product that can be used safely during mild and inclement weather conditions if used as directed. Failure to follow these instructions can void your warranty.

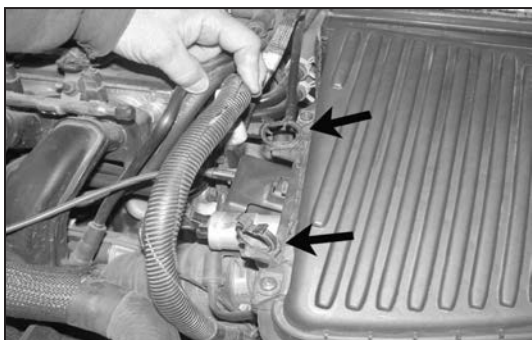
**NOTE: FAILURE TO FOLLOW INSTALLATION INSTRUCTIONS AND NOT USING THE PROVIDED HARDWARE MAY DAMAGE THE INTAKE TUBE, THROTTLE BODY AND ENGINE.**

**TO START:**

1. Turn off the ignition and disconnect the negative battery cable.  
**NOTE: Disconnecting the negative battery cable erases pre-programmed electronic memories. Write down all memory settings before disconnecting the negative battery cable. Some radios will require an anti-theft code to be entered after the battery is reconnected. The anti-theft code is typically supplied with your owner's manual. In the event your vehicles' anti-theft code cannot be recovered, contact an authorized dealership to obtain your vehicles anti-theft code.**



2. Remove the air temperature sensor from the stock intake tube as shown



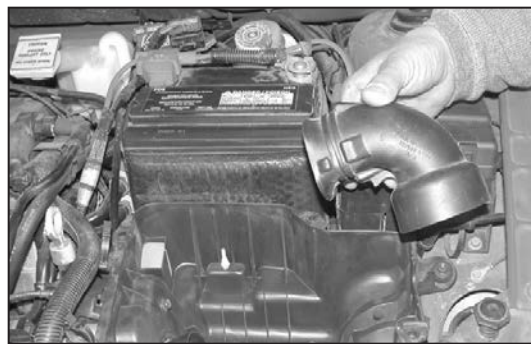
3. Remove the wire loom from retaining clips as shown.



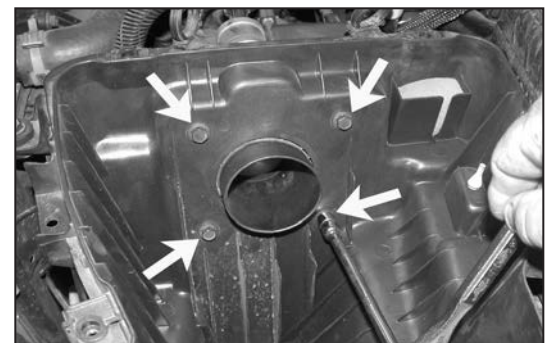
4. Loosen and remove the five air box retaining bolts then remove air box lid as shown.



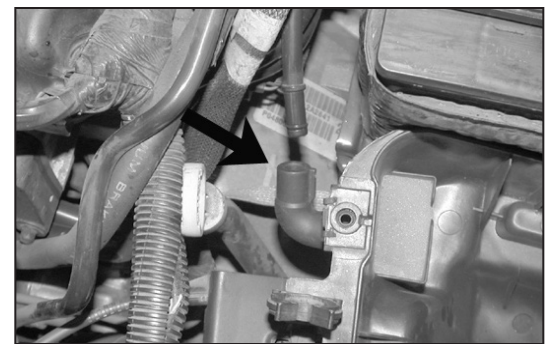
5. Remove the stock air filter.



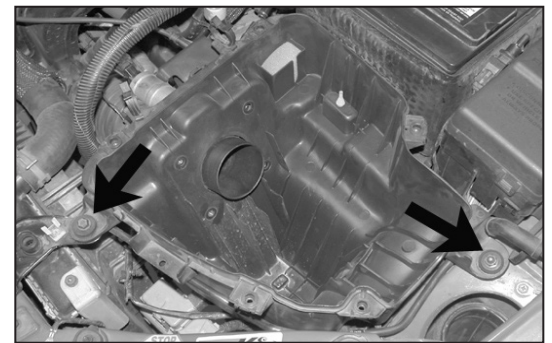
6. Pull up and remove the fresh air intake from fender well.



7. Remove the four throttle body retaining bolts from air box. These bolts will be re-used.



8. Remove the crank case vent hose from air box as shown.



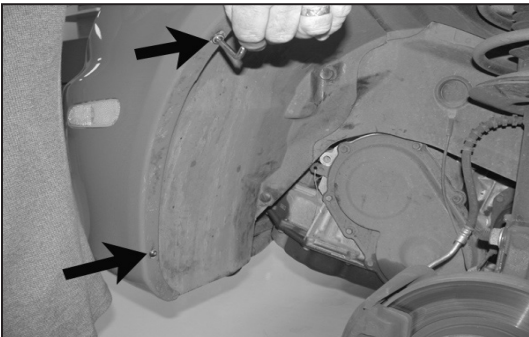
9. Remove the bolt and nut that secure the the air box to the vehicle. Bolt will be re-used.



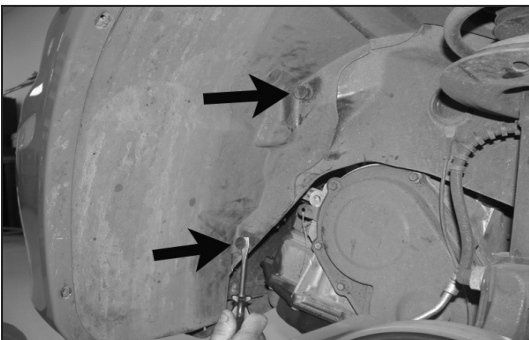
10. Remove the air box from the vehicle.  
**NOTE: K&N Engineering, Inc., recommends that customers do not discard factory air intake.**



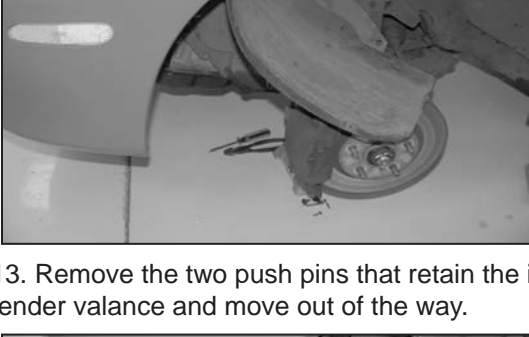
11. Jack the driver's side of the vehicle up and support with jack stands then remove the tire.



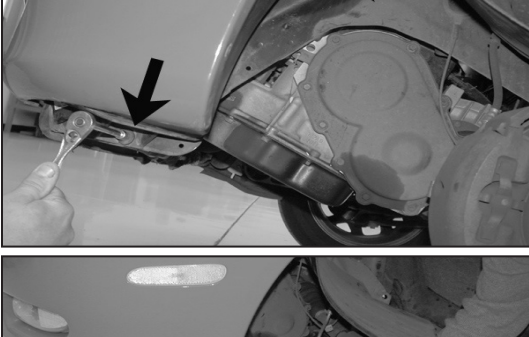
12. Using the supplied T-20 wrench, remove the two screws that retain the inner fender valance to the fender.



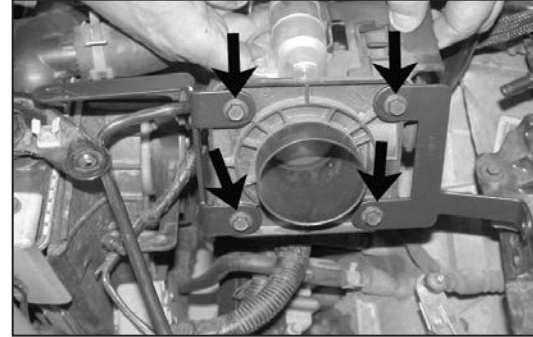
13. Remove the two push pins that retain the inner fender valance and move out of the way.



14. Remove the two bolts that retain the resonator to the fender well then remove the resonator.



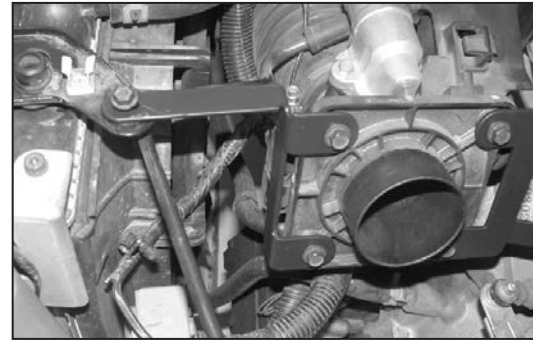
15. Remove the battery tray mounting bolt. This bolt will be re-used.



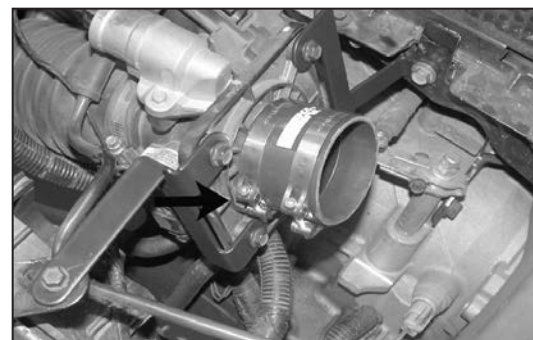
16. Using the four bolts that were removed in step 7, secure the two provided throttle body brackets to the throttle body as shown.



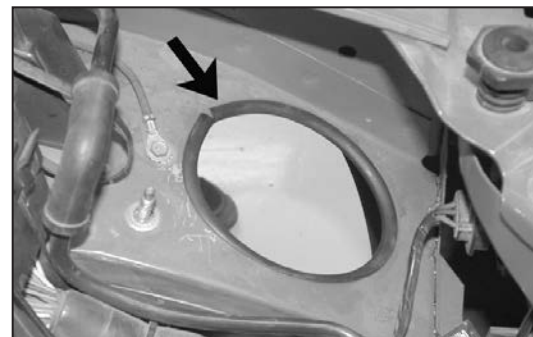
17. Using the battery tray mounting bolt that was removed in step 15, mount the throttle body bracket to the battery tray as shown.



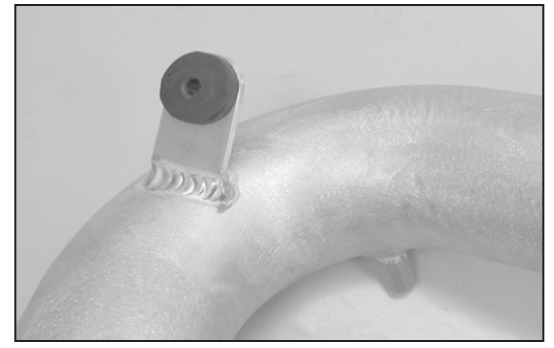
18. Using the stock bolt removed in step 9, secure the throttle body bracket to the stock air box mount.



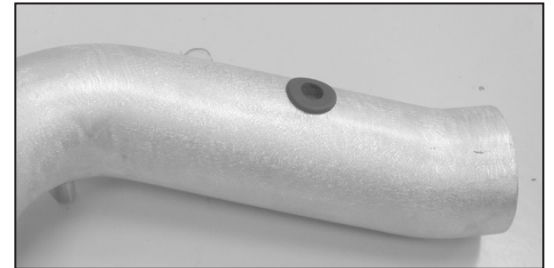
19. Install the supplied silicone hose and hose clamps to the throttle body and tighten throttle body hose clamp.



20. Install the supplied edge trim to the resonator hole as shown.



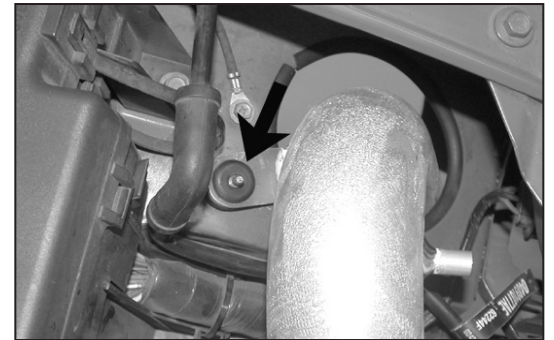
21. Install the larger grommet into the K&N® intake tube bracket.



22. Install the smaller grommet into the intake tube.



23. Slide the intake tube down the resonator hole then insert the other end into the throttle body silicone hose.



24. Align the intake tube bracket to the stock air box mount.



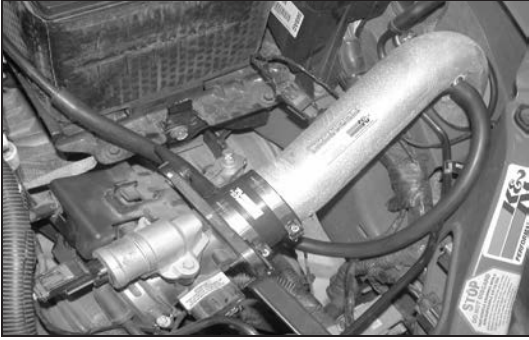
25. Using the supplied nut, tighten the intake tube bracket to the stock stud.



26. Align the intake tube and tighten throttle body hose clamp.



27. Install the air temp. sensor into the rubber grommet on the K&N® intake tube.



28. Using the supplied silicone hose, attach one end to the K&N® intake tube and the other end to the crank case vent tube.



29. Install the K&N® Drycharger® and hose clamp onto the K&N® air filter.

**NOTE: Please be aware the Drycharger® is water repellent, not water proof. Depending on conditions and usage the water repellent treatment is good for 1 to 2 years. See the parts list to reorder a new Drycharger® if necessary.**



30. From underneath the vehicle, install the K&N® air filter onto the intake tube.

31. Align everything for best fit and clearance and tighten all hardware.

32. Reverse the removal process and reinstall the inner fender valance.

33. Remount the tire and torque to factory specs.



34. Reconnect the vehicle's negative battery cable. Double check to make sure everything is tight and properly positioned before starting the vehicle.

35. The C.A.R.B. exemption sticker, (attached), must be visible under the hood, so the emissions inspector can see it when the vehicle is required to be tested for emissions. California requires testing every two years, other states may vary.

36. It will be necessary for all K&N® high flow intake systems to be checked periodically for realignment, clearance and tightening of all connections. Failure to follow the above instructions or proper maintenance may void warranty.

#### ROAD TESTING:

1. Start the engine with the transmission in neutral or park, and the parking brake engaged. Listen for air leaks or odd noises. For air leaks secure hoses and connections. For odd noises, find cause and repair before proceeding. This kit will function identically to the factory system except for being louder and much more responsive.

2. Test drive the vehicle. Listen for odd noises or rattles and fix as necessary.

3. If road test is fine, you can now enjoy the added power and performance from your kit.

4. K&N Engineering, Inc., requires cleaning the intake system's air filter element every 100,000 miles. When used in dusty or off-road environments, our filters will require cleaning more often. We recommend that you visually inspect your filter once every 25,000 miles to determine if the screen is still visible. When the screen is no longer visible some place on the filter element, it is time to clean it. To clean and re-oil, purchase our filter Recharger® service kit, part number 99-5050 or 99-5000 and follow the easy instructions.