



TYPHOON INTAKE SYSTEMS

INSTALLATION INSTRUCTIONS

69-1211TTK

HONDA

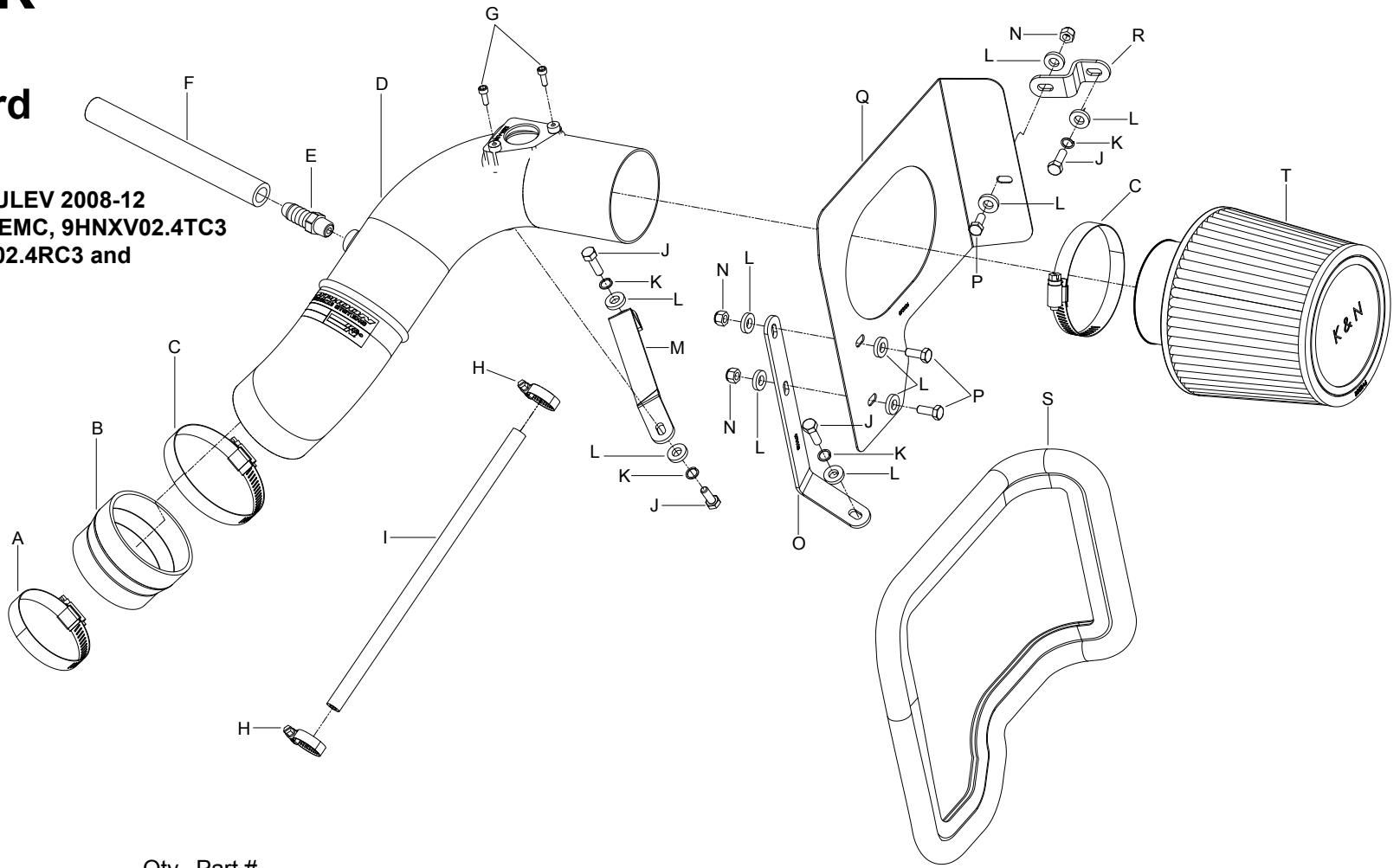
2008-12 Accord

L4-2.4L

NOTE: Excludes LEV2 SULEV 2008-12 Test Groups: 8HNXV02.4EMC, 9HNXV02.4TC3 AHNXV02.4KC3, BHNXV02.4RC3 and CHNXV02.4MC3

TOOLS NEEDED:

- 3mm allen wrench
- 10mm socket
- 10mm wrench extension
- flat blade screw driver
- phillips screw driver
- pliers
- ratchet



PARTS LIST:

Description	Qty.	Part #
A Hose Clamp #44	1	08577
B Hose; 3" TO 2-3/4" ID X 2" L TPRD	1	084036
C Hose Clamp #48	2	08601
D Intake Tube	1	27430
E Vent; Strt. 1/2" Hose, 1/4"NPT, Plas.	1	080022
F Hose; 1/2" ID X 7" L	1	08159
G Bolt; M4 - 0.07 8MM, A/H CAP, SS	2	07733
H Hose Clamp #004	2	21850
I Hose; 1/4" ID X 10-1/2" L Reinforced	1	08400
J Bolt; 6MM-1.00 X 16MM, SS	4	07812
K Washer; 1/4" Lock, ZN	4	08198
L Washer; 1/4"ID X 5/8"OD - SAE	10	08275
M Bracket; "Z", 69-1211, STL., TK/PC	1	070124
N Nut; 6MM Nylock, Hexhead, SS	3	07512
O Bracket; "L", 69-1211, STL. TK/PC	1	070123
P Bolt; M6 X 1.00" X 20MM HEX, SS	3	07795
Q Heat Shield	1	073106
R Bracket; 69-6026, "Z", STL., FB/PC	1	070061
S Edge Trim (39")	1	102496
T Air Filter	1	RU-3570

NOTE: FAILURE TO FOLLOW INSTALLATION INSTRUCTIONS AND NOT USING THE PROVIDED HARDWARE MAY DAMAGE THE INTAKE TUBE, THROTTLE BODY AND ENGINE.

TO START:

1. Turn off the ignition and disconnect the negative battery cable.

NOTE: Disconnecting the negative battery cable erases pre-programmed electronic memories. Write down all memory settings before disconnecting the negative battery cable. Some radios will require an anti-theft coded to be entered after the battery is reconnected. The anti-theft code is typically supplied with your owner's manual. In the event your vehicles' anti-theft code cannot be recovered, contact an authorized dealership to obtain your vehicles anti-theft code.



2. Disconnect the mass air sensor electrical connection and then unhook the wiring harness from air box.



3. Release the spring clamp and then disconnect the crank case vent hose from the intake tube.



4. Release the two hose clamps securing the intake tube to the air box and throttle body.



5. Remove the stock intake tube from the vehicle.



6. Unhook the wiring harness from the air box as shown.



7. Loosen and remove the two air box mounting bolts.

NOTE: The front air box mounting bolt is down low next to the battery hold down.



8. Remove the complete air box assembly from the vehicle.

NOTE: K&N Engineering, Inc., recommends that customers do not discard factory air intake.



9. Release the spring clamp which secures the crank case vent hose to the valve cover and then unhook crank case vent hose from the valve cover as shown.



10. Release the two spring clamps securing the coolant bypass hoses to the throttle body and thermostat housing, then remove the bypass hose assembly from the vehicle.

NOTE: The engine should be cool before performing this step so that HOT coolant is not released out of the engine. Be sure to capture any lost coolant.



11. Install the provided coolant bypass hose onto the throttle body and thermostat housing and secure with the provided hose clamp.

NOTE: Be sure to replenish any lost coolant.



12. Remove the bolt shown that secures the heater hose mounting bracket to thermostat housing.



13. Using the provided bolt, secure the intake tube mounting bracket (070124) to the heater hose mounting bracket and thermostat housing from step #12.



14. Remove the rear air box mounting bracket bolt shown.



15. Install the heat shield mounting bracket (070061) onto the air box mounting bracket and secure with the provided hardware.



16. Install the front heat shield bracket (070123) onto the lower front air box mounting location using the provided hardware.



17. Install the edge trim onto the heat shield as shown.

NOTE: Some trimming of the edge trim will be necessary.



18. Install the heat shield assembly into the vehicle and secure to the mounting brackets with the provided hardware.



19. Install the provided silicone hose (084036) onto the throttle body and secure with the provided hose clamp.



20. Install the provided vent fitting into the K&N® intake tube as shown.

NOTE: Plastic NPT fittings are easy to cross thread. Install the vent fitting "hand" tight, then turn it two complete turns with a wrench.



21. Remove the mass air sensor from the stock air box.



22. Install the mass air sensor into the K&N® intake tube and secure with the provided hardware.



23. Install the K&N® intake tube into the silicone hose at the throttle body and align with the tube mounting bracket installed in step #13. Secure with the provided hose clamp and hardware.



24. Install the provided crankcase vent hose onto the valve cover port and then to the vent fitting on the K&N® intake tube.

NOTE: Some trimming of the vent hose may be necessary.



25. Install the K&N® air filter and secure with the provided hose clamp.

NOTE: Drycharger® air filter wrap; part number RX-4990DK is available to purchase separately.



26. Reconnect the mass air sensor electrical connection.



27. Reconnect the vehicle's negative battery cable. Double check to make sure everything is tight and properly positioned before starting the vehicle.

28. The C.A.R.B. exemption sticker, (attached), must be visible under the hood so that an emissions inspector can see it when the vehicle is required to be tested for emissions. California requires testing every two years, other states may vary.

29. It will be necessary for all K&N® high flow intake systems to be checked periodically for realignment, clearance and tightening of all connections. Failure to follow the above instructions or proper maintenance may void warranty.

ROAD TESTING:

1. Start the engine with the transmission in neutral or park, and the parking brake engaged. Listen for air leaks or odd noises. For air leaks secure hoses and connections. For odd noises, find cause and repair before proceeding. This kit will function identically to the factory system except for being louder and much more responsive.

2. Test drive the vehicle. Listen for odd noises or rattles and fix as necessary.

3. If road test is fine, you can now enjoy the added power and performance from your kit.

4. K&N Engineering, Inc., requires cleaning the intake system's air filter element every 100,000 miles. When used in dusty or off-road environments, our filters will require cleaning more often. We recommend that you visually inspect your filter once every 25,000 miles to determine if the screen is still visible. When the screen is no longer visible some place on the filter element, it is time to clean it. To clean and re-oil, purchase our filter Recharger® service kit, part number 99-5050 or 99-5000 and follow the easy instructions.