



AIRCHARGER[®]

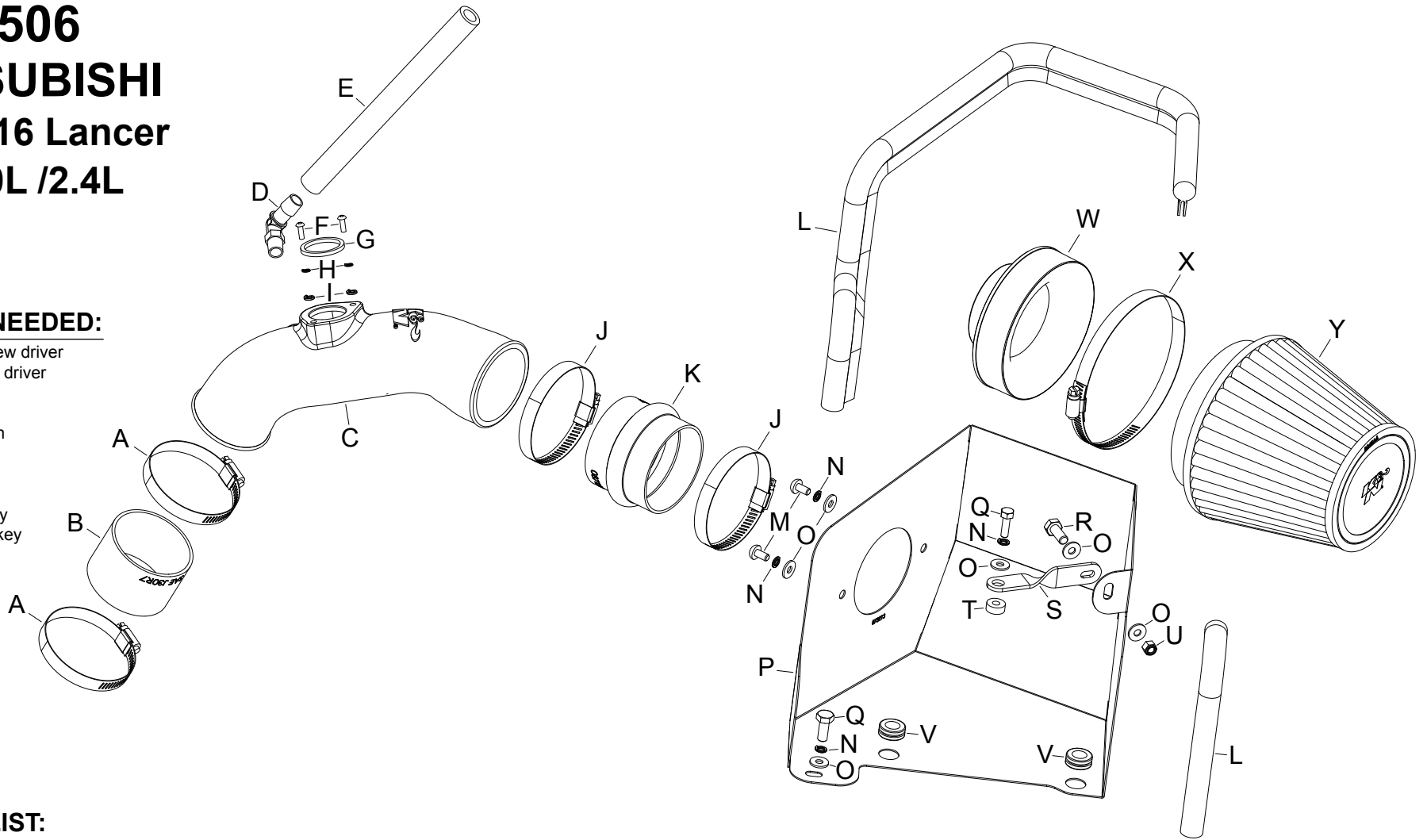
HIGH-FLOW INTAKE KITS

INSTALLATION INSTRUCTIONS

63-5506
MITSUBISHI
2015-16 Lancer
L4-2.0L /2.4L

TOOLS NEEDED:

- flat blade screw driver
- phillips screw driver
- t20 torx
- 10mm socket
- 10mm wrench
- ratchet
- extension
- pliers
- 4mm allen key
- 2.5mm allen key



PARTS LIST:

Description	Qty.	Part #	Description	Qty.	Part #	Description	Qty.	Part #
A HOSE CLAMP #44 STAINLESS	2	8560	I WASHER; M5, SPRING LOCK	2	21074	Q BOLT; 6MM-1.00 X 16MM, SS	2	7812
B HOSE; 2-3/4" ID X 2" L REIN	1	8440	J HOSE CLAMP #48	2	8601	R BOLT; M6 X 1.00" X 20MM HEX	1	7795
C INTAKE TUBE	1	87308	K HOSE; 3" ID X 2-1/2" L HUMP	1	87121	S BRACKET; 63-1015, SHORT	1	70702
D VENT; 90 DEG, 1/2"HOSE, 1/4"	1	08110FK	L EDGE TRIM (35")	1	102471	T SPACER; .625" OD X .250"ID	1	6555
E HOSE; 1/2" ID X 9" L	1	8401	M BOLT; M6 X 1.00" 12MM, SS	2	7794	U NUT; 6MM NYLOCK, HEXHEAD	1	7512
F SCREW; M4- .7 X 12, BUTTON	2	7726	N WASHER, M6 SPLIT LOCK ZINC	4	1-3025	V GROMMET; .875ODX.50ID	2	8063
G GASKET; 99 TACOMA V6, 1/8"	1	9013	O WASHER; 6MM FLAT, SS	6	8269	W ADAPTER; FILTER, 3.0"OD	1	21569
H WASHER; M4, SPRING LOCK	2	21703	P HEAT SHIELD	1	73213	X HOSE CLAMP #80	1	8694
						Y AIR FILTER	1	RU-5147

NOTE: FAILURE TO FOLLOW INSTALLATION INSTRUCTIONS AND NOT USING THE PROVIDED HARDWARE MAY DAMAGE THE INTAKE TUBE, THROTTLE BODY AND ENGINE.

TO START:

1. Turn off the ignition and disconnect the negative battery cable.
NOTE: Disconnecting the negative battery cable erases pre-programmed electronic memories. Write down all memory settings before disconnecting the negative battery cable. Some radios will require an anti-theft code to be entered after the battery is reconnected. The anti-theft code is typically supplied with your owner's manual. In the event your vehicles anti-theft code cannot be recovered, contact an authorized dealership to obtain your vehicles anti-theft code.



2. Remove the two plastic screws that secure the fresh air intake scoop to the core support and then lift up and remove the fresh air intake scoop from the vehicle.



3. Disconnect the mass air sensor electrical connection and unhook the harness from the air filter housing.



4. Release the spring clamp securing the crank case vent hose to the valve cover and then disconnect the hose from the valve cover.



5. Loosen the hose clamps securing the factory intake tube to the air filter housing and throttle body and then remove the intake tube from the vehicle.



6. Remove the bolt that secures the factory air filter housing to the vehicle. Unhook the brake booster vacuum hose from the air filter housing and then remove the air filter housing from the vehicle.
NOTE: K&N Engineering, Inc., recommends that customers do not discard factory air intake.

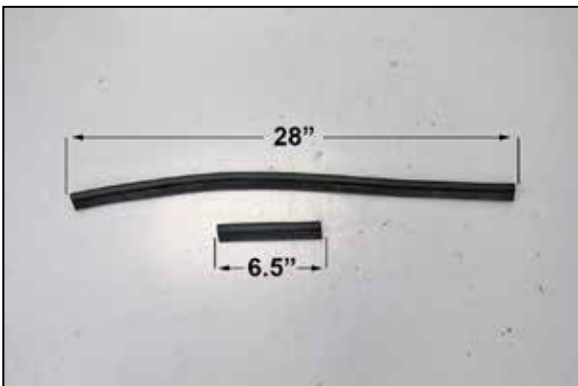


7. Install the provided filter adapter into the heat shield and secure with the provided hardware.



8. Install the heat shield mounting bracket onto the heat shield as shown and secure with the provided hardware.

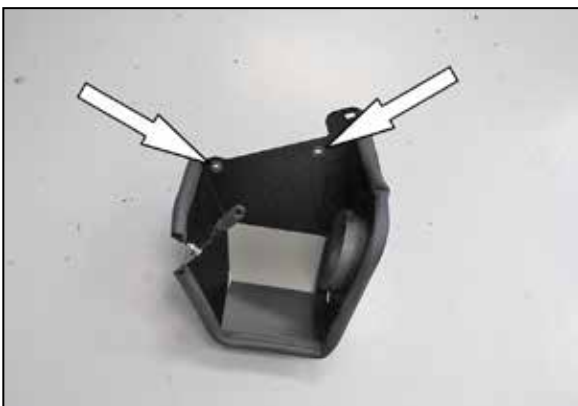
NOTE: Do not fully tighten the bracket at this time.



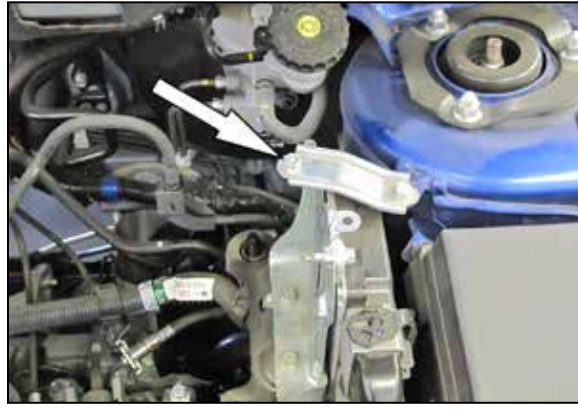
9. Cut the provided edge trim into two sections, one section will be 6.5" long and one section will be 28" long.



10. Install the edge trim onto the heat shield as shown.



11. Install the two provided grommets into the heat shield as shown.



12. Remove the bolt shown that secures the ECU.



13. Install the heat shield assembly so the grommets engage the factory mounting studs, align the bracket with the ECU mount, install the provided spacer and secure with the provided hardware.



14. Install the provided coupling hose (08440) onto the throttle body and secure with the provided hose clamp.



15. Install the provided coupling hose (087121) onto the filter adapter and secure with the provided hose clamp.



16. Install the provided 90° NPT vent fitting into the K&N® intake tube as shown.

NOTE: Plastic NPT fittings are easy to cross thread. Install the vent fitting "hand" tight, then turn it two complete turns with a wrench.



17. Remove the mass air sensor from the factory air filter housing.



18. Install the provided gasket onto the mass air sensor.



19. Using the four provided washers, install the mass air sensor into the K&N® intake tube and secure with the provided hardware.



20. Install the K&N® intake tube into the coupler on the filter adapter and then into the coupler on the throttle body. Adjust the tube for best fit and then secure with the provided hose clamps.



21. Install the provided crank case vent hose onto the fitting in the intake tube and then onto the fitting on the valve cover.



22. Connect the mass air sensor electrical connection.



23. Install the K&N® air filter and secure with the provided hose clamp.



24. Reinstall the fresh air intake scoop and secure with the factory fasteners.



25. Reconnect the vehicle's negative battery cable. Double check to make sure everything is tight and properly positioned before starting the vehicle.

26. The C.A.R.B. exemption sticker, (attached), must be visible under the hood so that an emissions inspector can see it when the vehicle is required to be tested for emissions. California requires testing every two years, other states may vary.

27. It will be necessary for all K&N® high flow intake systems to be checked periodically for realignment, clearance and tightening of all connections. Failure to follow the above instructions or proper maintenance may void warranty.

ROAD TESTING:

1. Start the engine with the transmission in neutral or park, and the parking brake engaged. Listen for air leaks or odd noises. For air leaks secure hoses and connections. For odd noises, find cause and repair before proceeding. This kit will function identically to the factory system except for being louder and much more responsive.

2. Test drive the vehicle. Listen for odd noises or rattles and fix as necessary.

3. If road test is fine, you can now enjoy the added power and performance from your kit.

4. K&N Engineering, Inc., requires cleaning the intake system's air filter element every 100,000 miles. When used in dusty or off-road environments, our filters will require cleaning more often. We recommend that you visually inspect your filter once every 25,000 miles to determine if the screen is still visible. When the screen is no longer visible some place on the filter element, it is time to clean it. To clean and re-oil, purchase our filter Recharger® service kit, part number 99-5050 or 99-5000 and follow the easy instructions.