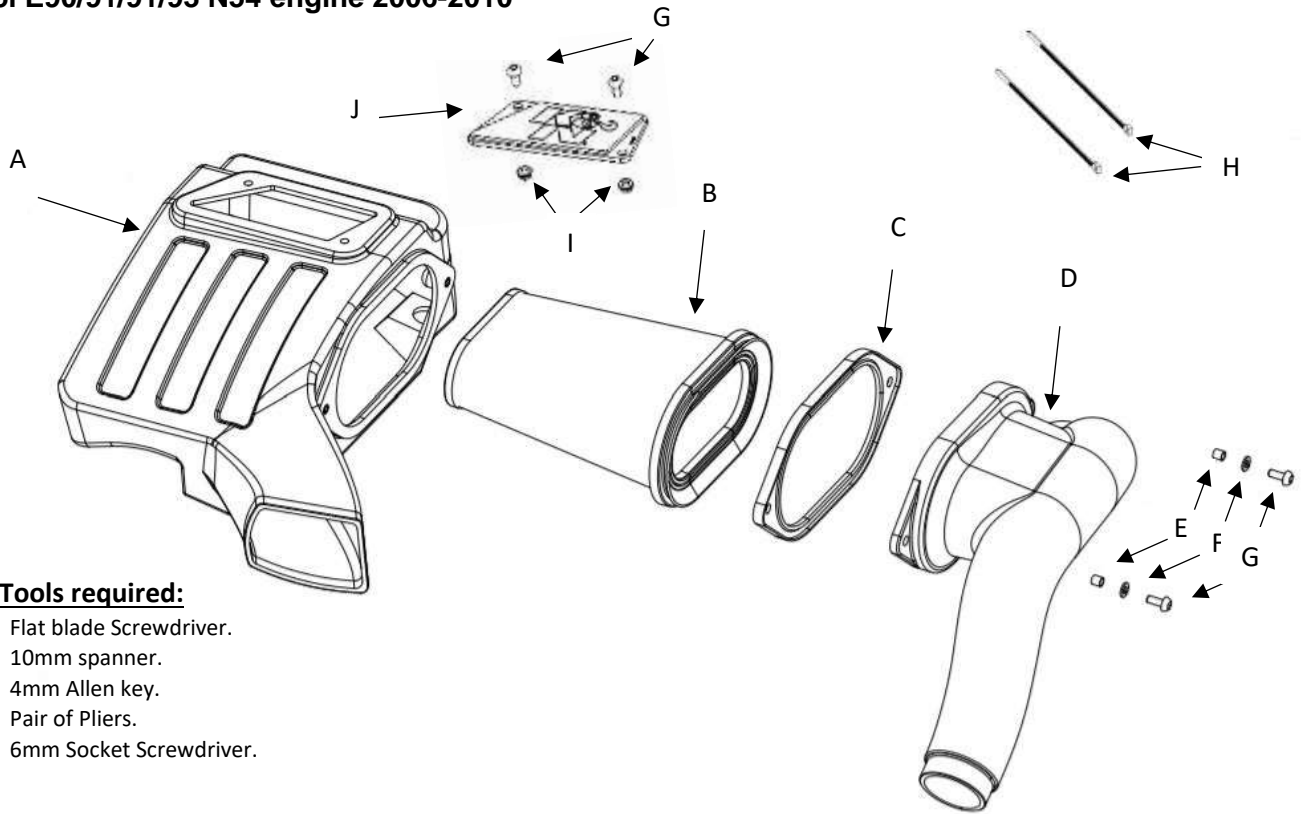


BMW 335i E90/91/91/93 N54 engine 2006-2010



Fitting Tools required:

- Flat blade Screwdriver.
- 10mm spanner.
- 4mm Allen key.
- Pair of Pliers.
- 6mm Socket Screwdriver.

Parts List:

No	Part Number	Description	QTY.
A	9-0457	Airbox Base; 57S-2003	1
B	RU-5293	Air Filter; 57S-2003	1
C	2-9301	Airbox Gasket	1
D	9-0458	Airbox Intake Tube	1
E	06537	Spacer 0.25ID	2
F	08269	Washer; 6mm Flat SS	4
G	07730	Bolt; M6 x 16mm SS	4
H	21591	Cable Tie	2
I	07512	Nut; M6 Nylock Hexhead	2
J	08351	K&N Logo Plate Clear	1



57s-2003



Installation Instructions

1. Unclip the 4 wiring harness guide retaining clips and then remove the upper wiring harness guide. (Fig. 1)
2. Remove the wiring from the lower guide and then unclip the three lower guide retaining clips and remove the lower guide from the vehicle. (Fig. 2)
3. Unclip the rear wiring harness to release and then pull the harness forward, remove the wire loom from the harness and remove the harness from the vehicle. (Fig. 3)
4. Carefully squeeze the sides of the vacuum hose connection and disconnect it from the vacuum pipe. (Fig. 4)
5. Unclip the 3 rubber wiring harness mounts from the rear of the air filter housing by pulling them up wards. (Fig. 5)
6. Loosen the 2 hose clamps that secure the intake tubes to the air filter housing. Remove the intake tubes from the air filter housing. (Fig. 6)
7. Disconnect the fresh air intake duct from the air filter housing. (Fig. 7)
8. Pull the air filter housing straight upwards to dislodge it from the 3 mounting gourmets and then remove it from the vehicle. (Fig. 8)
9. Remove the three mounting grommets from the air filter housing and install them into the K&N® air filter housing as shown. (Fig. 9 & 10)
10. Install the K&N® logo plate into the new air filter housing and secure with the hardware supplied. (Fig. 11)
11. Install the two provided bushings into the new intake tube assembly as shown.(Fig. 12)
12. Install the K&N® air filter into the tube assembly as shown. (Fig. 13)
13. Fit the large gasket onto the new air filter housing as shown. (Fig. 14)
14. Install the intake tube assembly into the new air filter housing and secure with the hardware supplied. (Fig. 15)
15. Install the K&N® intake assembly onto the factory mounting points, align and connect the fresh air intake duct. Fit the factory intake tubes to the new air filter housing and then secure with the factory hose clamps. (Fig. 16)
16. Reconnect the vacuum hose to the vacuum pipe. (Fig. 16)
17. Use the provided tie wraps and secure the wiring looms to the slam panel (make sure enough clearance is provided to the loom for engine movement). (Fig. 17)
18. Carry out a final height alignment check of the kit fitment and make sure all hardware is secured, installation is now complete.

WARNING: Before starting the engine carry out a final fitment check of the K&N performance kit. It will be necessary for kits to be checked periodically for realignment, clearance and tightening of all connections. Failure to follow the instructions or proper maintenance may void the warranty.

FILTER MAINTENANCE: K&N suggests checking the filter periodically for excessive dirt build-up. When the element becomes covered in dirt (or once a year), service it according to the instructions on the service kit available from your K&N dealer, part number 99-5000EU



Fig.#1

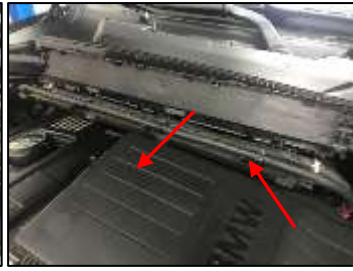


Fig.#2



Fig.#3



Fig.#4



Fig.#5



Fig.#6



Fig.#7



Fig.#8



Fig.#9



Fig.#10



Fig.#11



Fig.#12



Fig.#13



Fig.#14



Fig.#15



Fig.#16



Fig.#17