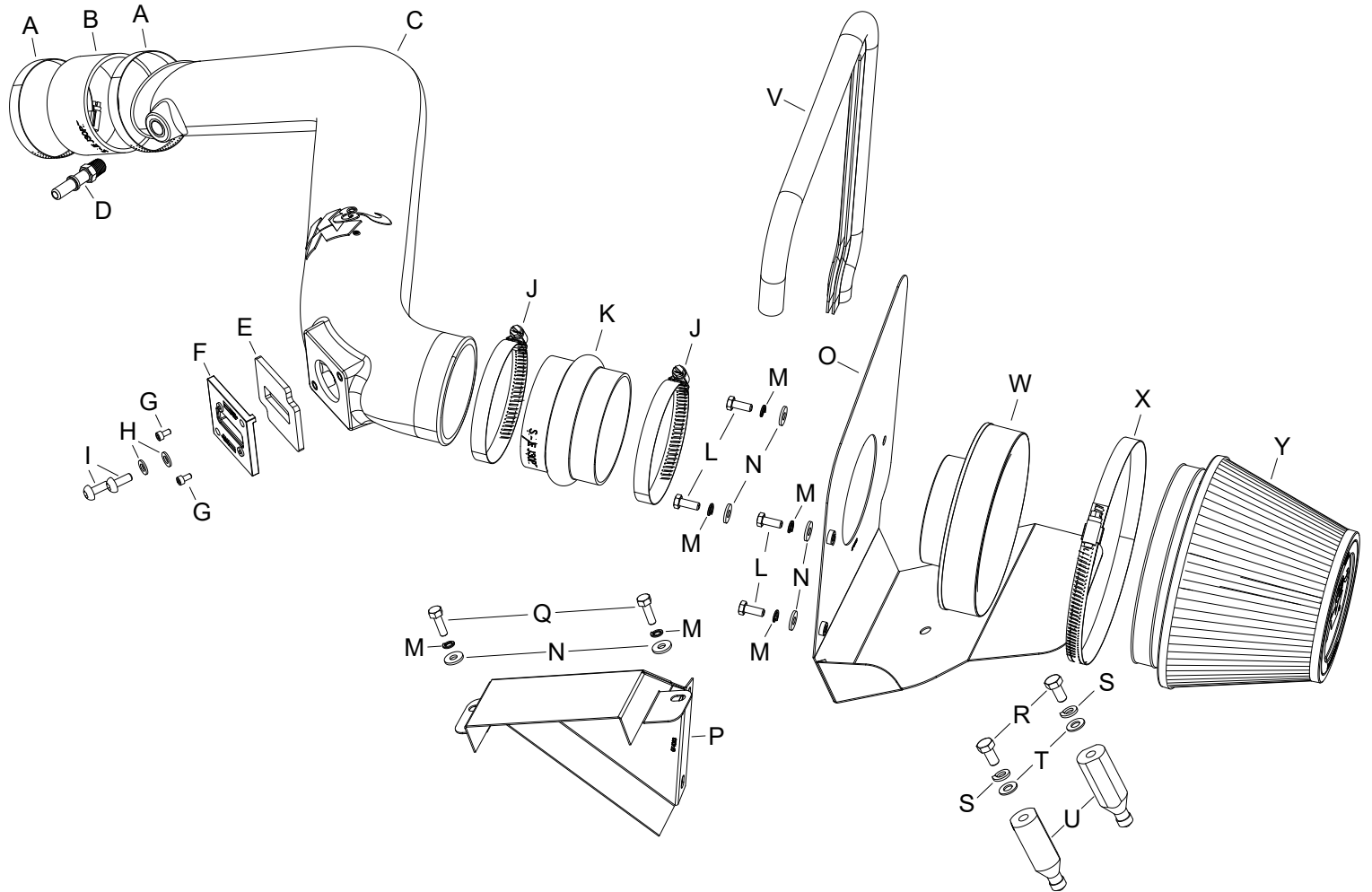




INTAKE SYSTEMS FOR VEHICLES LISTED ARE 50 STATE LEGAL.

INSTALLATION INSTRUCTIONS

57-2598
FORD
2013-17 Taurus
L4-2.0L Turbo



TOOLS NEEDED:

- flat blade screw driver
- ratchet
- extension
- 8mm socket
- 10mm socket
- 13mm socket
- 3mm allen
- 4mm allen

PARTS LIST:

Description	Qty.	Part #	Description	Qty.	Part #	Description	Qty.	Part #
A HOSE CLAMP #48	2	08601	I BOLT; M6 X 1.00 X 16MM, SS	2	07730	Q BOLT; M6 X 1.00" X 20MM HEX	2	07795
B HOSE; 3.25"ID X 2"L REIN.	1	08690	J HOSE CLAMP #56	2	08620	R BOLT; 8MM-1.25 X 16MM	2	07844
C INTAKE TUBE (LW)	1	087349A	K HOSE; HUMP 3.5"ID X 2.5"L	1	08699	S WASHER, M8 SPLIT LOCK ZINC	2	1-3036
D VENT; QUICK DISCONNECT	1	088025	L BOLT; 6MM-1.00 X 16MM, SS	4	07812	T WASHER; 5/16"ID X 5/8"OD	2	08276
E GASKET; 57-2556, 3/16 PORON	1	09069	M WASHER, M6 SPLIT LOCK ZINC	6	1-3025	U STANDOFF; 6.0 FORD AIRBOX	2	06532
F ADAPTOR; #420, NYLON 6/6	1	21515	N WASHER; 1/4"ID X 5/8"OD	6	08275	V EDGE TRIM (23")	1	102495
G BOLT; M4 - 0.7 8MM, A/H CAP	2	07733	O HEAT SHIELD	1	074082	W ADAPTER; UNIVERSAL, 6"	1	21512-1
H WASHER; 6MM FLAT, SS	2	08269	P HEAT SHIELD SCOOP	1	074083	X HOSE CLAMP; #104	1	08697
						Y FILTER CHARGER	1	RU-2960

NOTE: FAILURE TO FOLLOW INSTALLATION INSTRUCTIONS AND NOT USING THE PROVIDED HARDWARE MAY DAMAGE THE INTAKE TUBE, THROTTLE BODY AND ENGINE.

TO START:

1. Turn off the ignition and disconnect the negative battery cable.
NOTE: Disconnecting the negative battery cable erases pre-programmed electronic memories. Write down all memory settings before disconnecting the negative battery cable. Some radios will require an anti-theft code to be entered after the battery is reconnected. The anti-theft code is typically supplied with your owner's manual. In the event your vehicles anti-theft code cannot be recovered, contact an authorized dealership to obtain your vehicles anti-theft code.



2. Release the red locking tab and then disconnect inlet air temperature sensor electrical connection.



3. Lift the engine cover and remove it from the vehicle.



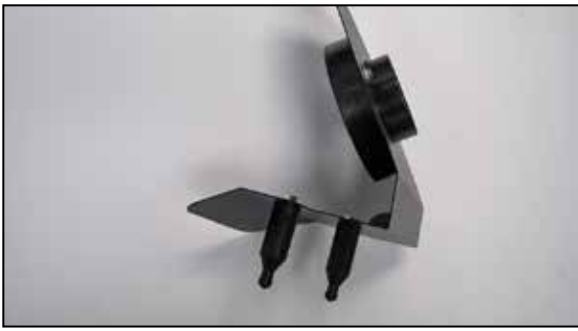
5. Loosen the two hose clamps that secure the factory intake tube and then remove the intake tube from the vehicle.



6. Remove the two bolts that secure the fresh air duct to the core support then lift up and remove the complete air filter housing from the vehicle.
NOTE: K&N Engineering, Inc., recommends that customers do not discard factory air intake.



7. Install the filter adapter into the heat shield and secure with the provided hardware as shown.



8. Install the two provided heat shield mounting studs onto the heat shield and secure with the provided hardware.



9. Install the provided fresh air duct onto the heat shield as shown and secure with the provided hardware.

NOTE: Do not completely tighten at this time.



10. Install the provided edge trim onto the heat shield as shown.

NOTE: Some trimming of the edge trim will be necessary.



11. Install the K&N® air filter onto the filter adapter and secure with the provided hose clamp.

NOTE: Drycharger® air filter wrap; part # 22-8049DK is available to purchase separately.



12. Install the heat shield assembly so the mounting studs insert into the air filter housing mounting grommets. Secure the fresh air duct with the hardware provided to the core support and the hardware installed into the heat shield.



13. Install the provided hump coupler (08699) onto the filter adapter and secure with the provided hardware.



14. Install the coupling hose (08690) onto the turbo inlet and secure with the provided hardware.



15. Remove the mass air sensor from the factory air filter housing and install it into the mass air adapter using the provided hardware. Install the provided gasket onto the K&N® mass air adapter.



16. Install the mass air sensor assembly into the K&N® intake tube as shown and secure with the provided hardware.

NOTE: Be sure the opening is towards the filter end of the tube.



17. Install the provided quick disconnect fitting into the K&N® intake tube as shown.

NOTE: Plastic NPT fittings are easy to cross thread. Install the vent fitting "hand" tight, then turn it two complete turns with a wrench.



18. Install the K&N® intake tube assembly into the coupler at the turbo inlet and then into the coupler at the filter adapter, adjust the tube for best fit and then secure with the provided hose clamp.



19. Reconnect the Inlet air temperature electrical connection.



20. Connect the EVAP vent line to the quick disconnect fitting installed into the K&N® intake tube.



21. Reinstall the decorative engine cover.



22. Reconnect the vehicle's negative battery cable. Double check to make sure everything is tight and properly positioned before starting the vehicle.

23. The C.A.R.B. exemption sticker, (attached), must be visible under the hood so that an emissions inspector can see it when the vehicle is required to be tested for emissions. California requires testing every two years, other states may vary.

24. It will be necessary for all K&N® high flow intake systems to be checked periodically for realignment, clearance and tightening of all connections. Failure to follow the above instructions or proper maintenance may void warranty.

ROAD TESTING:

1. Start the engine with the transmission in neutral or park, and the parking brake engaged. Listen for air leaks or odd noises. For air leaks secure hoses and connections. For odd noises, find cause and repair before proceeding. This kit will function identically to the factory system except for being louder and much more responsive.

2. Test drive the vehicle. Listen for odd noises or rattles and fix as necessary.

3. If road test is fine, you can now enjoy the added power and performance from your kit.

4. K&N Engineering, Inc., requires cleaning the intake system's air filter element every 100,000 miles. When used in dusty or off-road environments, our filters will require cleaning more often. We recommend that you visually inspect your filter once every 25,000 miles to determine if the screen is still visible. When the screen is no longer visible some place on the filter element, it is time to clean it. To clean and re-oil, purchase our filter Recharger® service kit, part number 99-5050 or 99-5000 and follow the easy instructions.

INTAKE SYSTEMS FOR VEHICLES LISTED ARE 50 STATE LEGAL.